

SUBMITTAL TO THE BOARD OF SUPERVISORS
COUNTY OF RIVERSIDE, STATE OF CALIFORNIA

709 B



FROM: TLMA – Transportation Dept. SUBMITTAL DATE: February 24, 2003

SUBJECT: Approval of **TRACT 28886-1 (Honey Run Road)**
A Schedule "A" Subdivision in the Meniffee Area

RECOMMENDED MOTION: That the Board approve the Improvement Agreements and Securities as approved by County Counsel, and authorize the Chairman to sign the Improvement Agreements for Tract 28886-1 (Honey Run Road).

BACKGROUND: The developer desires to enter into Improvement Agreements to guarantee the construction of the required improvements and has submitted Improvement Agreements and Securities which have been approved by County Counsel.

REVIEWED BY EXECUTIVE OFFICE
John H. Siefert
DATE 2/25/03

HS:lf
Submittals: Vicinity Map
Road/Drainage Improvement Agrmts

George A. Johnson
George A. Johnson
Director of Transportation

Department Recommendation: Consent Policy
Per Executive Office: Consent Policy

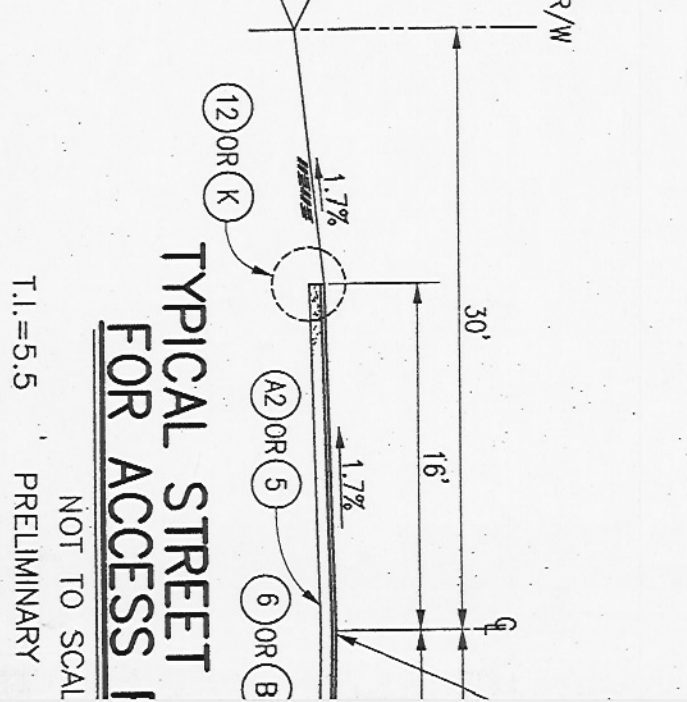
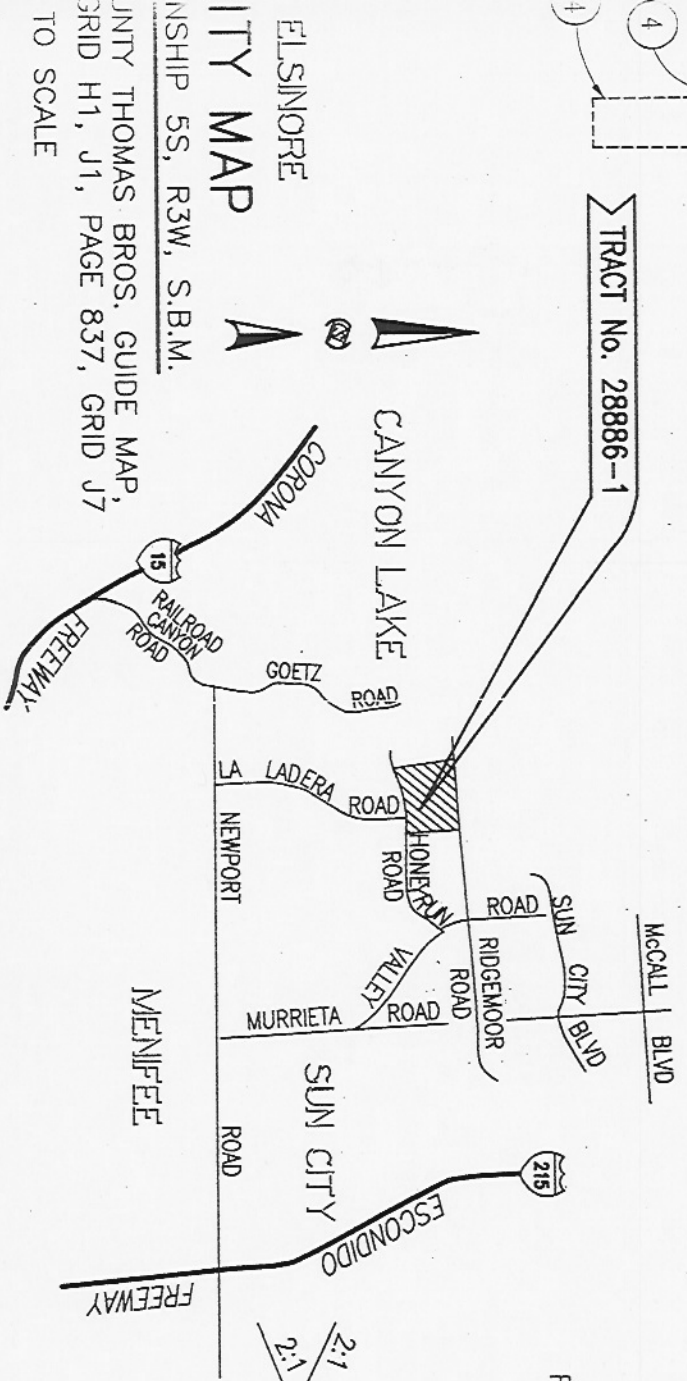
COUNTY OF RIVERSIDE
CLERK OF SUPERVISORS
OFFICE OF THE CLERK OF SUPERVISORS
EXECUTIVE

TYPICAL STREET SECTION PER RIV. CO. STD. NO. 104-A

NOT TO SCALE

CRESTPEAK COURT STA. 6+45.00 TO 10+00.00
 PAINTED CANYON COURT STA. 6+30.00 TO 10+00.00
 SPRINGBROOK WAY STA. 27+24.73 TO 35+53.50
 BRIDGEPORT LANE STA. 10+00.00 TO 19+04.48
 LA LADERA ROAD STA. 54+58.80 TO 62+49.25
 SILVERWOOD LANE STA. 10+00.00 TO 11+40.00
 T.I.=5.5, PRELIMINARY R-VALUE=38

- ### OFFSITE NOTES
- A1, A2 & B: LIMITS SHOWN ON INDEX MAP
 - C: LIMITS SHOWN ON INDEX MAP
 - D: SIDEWALK IS PROPOSED ALONG NORTH SIDE FRONTAGE AS SHOWN ON INDEX MAP.
 - E: LIMITS SHOWN ON INDEX MAP
 - F: STREET LIGHTS ARE PER THE STREET LIGHT
 - G: TREES ON THE NORTH SIDE OF HONEYRUN
 - H: LIMITS ARE ALONG FRONTAGE OF HONEYRU ROAD.
 - I: BARRICADE TO BE INSTALLED @ STATION 7
 - J: BARRICADES TO BE REMOVED @ INTERSECT
 - K: ROAD AS INSTALLED PER SHEET 7 OF 9 O SHOWN ON PLAN



TYPICAL STREET FOR ACCESS
 NOT TO SCALE
 T.I.=5.5 PRELIMINARY

J.L. ENGINEERING, INC.

51 STERLING AVENUE, SUITE E
 RIVERSIDE, CALIFORNIA 92503
 (951) 785-5122 * FAX (909) 785-5180

BENCHMARK:
 RIV. CO. B.M. M-48-69 DESCRIBED AS FOLLOWS:
 0.7 MILES EAST ON NEWPORT RD. FROM GOETZ RD.,
 85' SOUTH OF NEWPORT RD., 24' NORTH OF POWER POLE
 #215388 IN A NORTH-SOUTH POWER LINE, 16' EAST OF
 A DIRT ENTRANCE TO A RANCH, 1' EAST OF DOWN GUY,
 1' NORTH OF A MARKER POST, SET A BRASS DISK IN
 THE TOP OF A CONCRETE POST.
 ELEV.= 1409.771
 (1969)

TRACT 28886-1

COUNTY OF RIVERSIDE
 SCHEDULE "A"
 STREET IMPROVEMENT
 TITLE SHEET

PREPARED BY: R.C.E. NO. 25917
 (EXP. 12/31/05)

SCALE: INDEX MAP