

SUBMITTAL TO THE BOARD OF SUPERVISORS
COUNTY OF RIVERSIDE, STATE OF CALIFORNIA

939



404

FROM: Department of Facilities Management

SUBMITTAL DATE: May 6, 2003

SUBJECT: NOTICE OF INTENTION TO CONDEMN REAL PROPERTY FOR
FREEWAY IMPROVEMENT PURPOSES/CALIFORNIA DEPARTMENT OF
TRANSPORTATION - INTERSTATE 215/91/60 SEQUENCING PROJECT

RECOMMENDED MOTION: That the Board of Supervisors consider approving Resolution 2003-145, Notice of Intention to Condemn Real Property for freeway improvement purposes on behalf of the State of California Department of Transportation for the Interstate 215/91/60 sequencing project, and to set a public hearing for Resolution 2003-154, Authorizing Condemnation of Real Property for Freeway Improvement Purposes, on June 10, 2003.

BACKGROUND: Pursuant to Minute Order 3.33 approved by the Board of Supervisors on November 26, 2002, a resolution was passed agreeing to hear Resolutions Authorizing Condemnation on behalf of the State of California Department of Transportation. As a prelude thereto, it is necessary for the Board to consider adopting Resolutions of Notice of Intent to Condemn Real Property for parcels affected by the project.

MJS:JS:sh
8.310

for T.J. Miller
MICHAEL J. SYLVESTER, Director
Department of Facilities Management

FINANCIAL DATA:

CURRENT YEAR COST
NET COUNTY COST

\$ -0-
\$ -0-

ANNUAL COST \$ -0-
IN CURRENT YEAR BUDGET: Yes
BUDGET ADJUSTMENT: N/A FOR FY: N/A

SOURCE OF FUNDS: State of California, Department of Transportation

C.E.O. RECOMMENDATION: **APPROVE.**

County Executive Officer Signature *[Signature]*

Policy
 Policy

Consent
 Consent

Department Recommendation:
Per Executive Office:

Prev. Agn. ref.

Dist. 1, 2 & 5

AGENDA NO.

ATTACHMENTS FILED
WITH THE CLERK OF THE BOARD

3 13

2
3 RESOLUTION NO. 2003-145

4 NOTICE OF INTENTION TO CONDEMN REAL PROPERTY
5 FOR FREEWAY IMPROVEMENT PURPOSES

6 BE IT RESOLVED, FOUND, DETERMINED, AND ORDERED by the Board of
7 Supervisors of Riverside County, State of California, in regular session assembled on
8 May 20, 2003, and NOTICE IS HEREBY GIVEN as follows:
9

10 1. That this Board will consider passing a resolution of necessity
11 authorizing the condemnation of certain parcels of real property for freeway
12 improvement purposes described as portions of Assessor's Parcel Number 206-142-
13 035, also known as Caltrans Parcel #17750, shown as legal descriptions and plat maps
14 on file in the Office of the Clerk of the Board, and located in Riverside, and to hold a
15 public hearing on June 10, 2003, at 10:00 a.m. in the meeting room of the Board of
16 Supervisors located on the 1st Floor, County Administrative Center Annex, 4080 Lemon
17 Street, Riverside, California, at which time the person or entity whose real property is
18 sought to be condemned and whose name and address appears on the last equalized
19 County Assessment Roll and who has filed a timely written request to appear and be
20 heard, will be given an opportunity to be heard on the following matters:
21

22 a. Whether the public interest and necessity require the
23 construction of the public improvement.
24

25 b. Whether the public improvement is planned and located in
26 the manner that will be most compatible with the greatest public good and the least
27 private injury.
28

1
2
3
4
5
6
7
8
9
10
11
12
13
14
15
16
17
18
19
20
21
22
23
24
25
26
27
28

c. Whether the real property sought to be acquired is necessary for the construction of the public improvement.

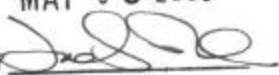
2. That the failure of any person, whose real property is sought to be condemned, to file a written request to appear and be heard with the Clerk of the Board within 15 days after a copy of the resolution is mailed to, or personally served upon such person, will result in his or her waiver of the right to appear and be heard.

BE IT FURTHER RESOLVED that the State of California, Department of Transportation, has caused a letter of intent, see attached, and a copy of the right of way map to be mailed to or personally served upon each person or entity whose real property is sought to be condemned and whose name and address appears on the last equalized County Assessment Roll.

JS:sh
5/6/03
8.308

FORM APPROVED
COUNTY COUNSEL

MAY 06 2003

BY 
ASSISTANT COUNTY COUNSEL

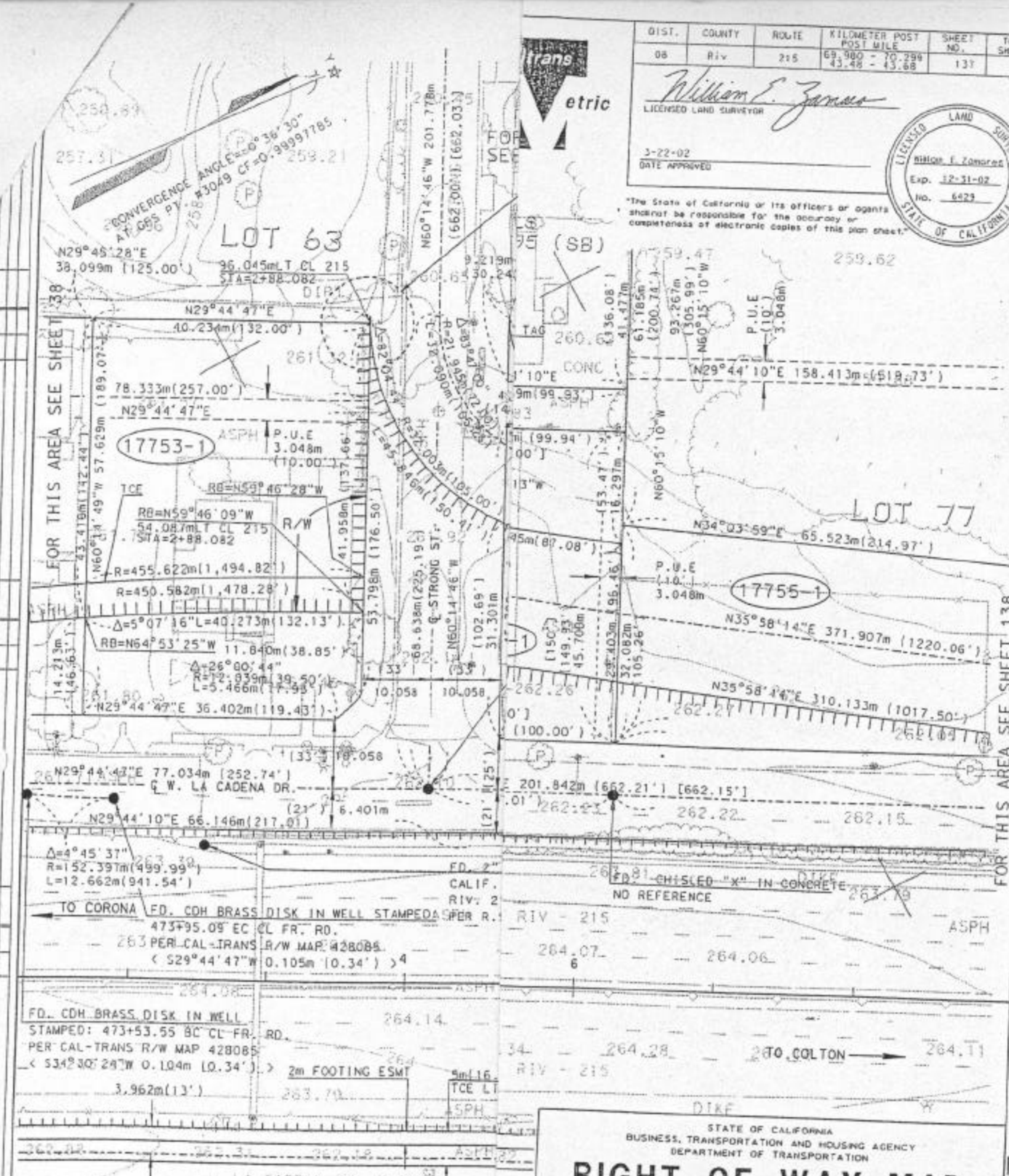
DIST.	COUNTY	ROUTE	KILOMETER POST MILE	SHEET NO.	TOTAL SHEETS
08	Riv	215	69.980 - 70.299 43.48 - 43.88	137	139

William E. Zamora
LICENSED LAND SURVEYOR



3-22-02
DATE APPROVED

*The State of California or its officers or agents should not be responsible for the accuracy or completeness of electronic copies of this plan sheet.



PARCEL NO.	GRANTOR	REQUIRED
		SG. METERS (SQ. FT.)
17748-1	TIMOTHY SHERWIN, ET UX	2,718.7 (29,129)
17751-1	DARYL SHERWIN, ET UX	2,836.8 (30,718)
17752-1	TRE, INC.	519.3 (5,598)
17753-1	CALVEY DEAF CHURCH	955.1 (10,378)
17755-1	RIV. CO. TRANS. COMMISSION	SEE SHEET 138
19249-1	CITY OF RIVERSIDE	2,720.6 (29,218)
19249-2	CITY OF RIVERSIDE	1,677.6 (18,118)
19258-1	JOSE R. MARTINEZ	12.3 (133)

STATE OF CALIFORNIA
BUSINESS, TRANSPORTATION AND HOUSING AGENCY
DEPARTMENT OF TRANSPORTATION

RIGHT OF WAY MAP

0 20 40 60 METER

SCALE 1:400

Coordinates and bearings are on NGS 83 Zone 6. Distances and stationing are arc distances. Multiply by 1.000022150 to obtain ground distances. Grid was established from N.G.S. triangulation stations.

Pt. #3049 (Calif. Dept. of Transportation Riv. 60+02.21 1988), as shown by Record of Survey on file in Book 89, Pages 61-76 of Record of Survey, Riverside County.

Supplementary information may be obtained from the District Office, Survey Branch or Right of Way Engineering Branch.

ACCESS PROHIBITED

6. DETAIL "A" REVISED AREAS OF PARCELS 17748-1, 17750-1, 17751-1, 19249-1, 19258-1, 19259-1, 19260-1, 19261-1, 19262-1, 19263-1, 19264-1, 19265-1, 19266-1, 19267-1, 19268-1, 19269-1, 19270-1, 19271-1, 19272-1, 19273-1, 19274-1, 19275-1, 19276-1, 19277-1, 19278-1, 19279-1, 19280-1, 19281-1, 19282-1, 19283-1, 19284-1, 19285-1, 19286-1, 19287-1, 19288-1, 19289-1, 19290-1, 19291-1, 19292-1, 19293-1, 19294-1, 19295-1, 19296-1, 19297-1, 19298-1, 19299-1, 19300-1, 19301-1, 19302-1, 19303-1, 19304-1, 19305-1, 19306-1, 19307-1, 19308-1, 19309-1, 19310-1, 19311-1, 19312-1, 19313-1, 19314-1, 19315-1, 19316-1, 19317-1, 19318-1, 19319-1, 19320-1, 19321-1, 19322-1, 19323-1, 19324-1, 19325-1, 19326-1, 19327-1, 19328-1, 19329-1, 19330-1, 19331-1, 19332-1, 19333-1, 19334-1, 19335-1, 19336-1, 19337-1, 19338-1, 19339-1, 19340-1, 19341-1, 19342-1, 19343-1, 19344-1, 19345-1, 19346-1, 19347-1, 19348-1, 19349-1, 19350-1, 19351-1, 19352-1, 19353-1, 19354-1, 19355-1, 19356-1, 19357-1, 19358-1, 19359-1, 19360-1, 19361-1, 19362-1, 19363-1, 19364-1, 19365-1, 19366-1, 19367-1, 19368-1, 19369-1, 19370-1, 19371-1, 19372-1, 19373-1, 19374-1, 19375-1, 19376-1, 19377-1, 19378-1, 19379-1, 19380-1, 19381-1, 19382-1, 19383-1, 19384-1, 19385-1, 19386-1, 19387-1, 19388-1, 19389-1, 19390-1, 19391-1, 19392-1, 19393-1, 19394-1, 19395-1, 19396-1, 19397-1, 19398-1, 19399-1, 19400-1, 19401-1, 19402-1, 19403-1, 19404-1, 19405-1, 19406-1, 19407-1, 19408-1, 19409-1, 19410-1, 19411-1, 19412-1, 19413-1, 19414-1, 19415-1, 19416-1, 19417-1, 19418-1, 19419-1, 19420-1, 19421-1, 19422-1, 19423-1, 19424-1, 19425-1, 19426-1, 19427-1, 19428-1, 19429-1, 19430-1, 19431-1, 19432-1, 19433-1, 19434-1, 19435-1, 19436-1, 19437-1, 19438-1, 19439-1, 19440-1, 19441-1, 19442-1, 19443-1, 19444-1, 19445-1, 19446-1, 19447-1, 19448-1, 19449-1, 19450-1, 19451-1, 19452-1, 19453-1, 19454-1, 19455-1, 19456-1, 19457-1, 19458-1, 19459-1, 19460-1, 19461-1, 19462-1, 19463-1, 19464-1, 19465-1, 19466-1, 19467-1, 19468-1, 19469-1, 19470-1, 19471-1, 19472-1, 19473-1, 19474-1, 19475-1, 19476-1, 19477-1, 19478-1, 19479-1, 19480-1, 19481-1, 19482-1, 19483-1, 19484-1, 19485-1, 19486-1, 19487-1, 19488-1, 19489-1, 19490-1, 19491-1, 19492-1, 19493-1, 19494-1, 19495-1, 19496-1, 19497-1, 19498-1, 19499-1, 19500-1, 19501-1, 19502-1, 19503-1, 19504-1, 19505-1, 19506-1, 19507-1, 19508-1, 19509-1, 19510-1, 19511-1, 19512-1, 19513-1, 19514-1, 19515-1, 19516-1, 19517-1, 19518-1, 19519-1, 19520-1, 19521-1, 19522-1, 19523-1, 19524-1, 19525-1, 19526-1, 19527-1, 19528-1, 19529-1, 19530-1, 19531-1, 19532-1, 19533-1, 19534-1, 19535-1, 19536-1, 19537-1, 19538-1, 19539-1, 19540-1, 19541-1, 19542-1, 19543-1, 19544-1, 19545-1, 19546-1, 19547-1, 19548-1, 19549-1, 19550-1, 19551-1, 19552-1, 19553-1, 19554-1, 19555-1, 19556-1, 19557-1, 19558-1, 19559-1, 19560-1, 19561-1, 19562-1, 19563-1, 19564-1, 19565-1, 19566-1, 19567-1, 19568-1, 19569-1, 19570-1, 19571-1, 19572-1, 19573-1, 19574-1, 19575-1, 19576-1, 19577-1, 19578-1, 19579-1, 19580-1, 19581-1, 19582-1, 19583-1, 19584-1, 19585-1, 19586-1, 19587-1, 19588-1, 19589-1, 19590-1, 19591-1, 19592-1, 19593-1, 19594-1, 19595-1, 19596-1, 19597-1, 19598-1, 19599-1, 19600-1, 19601-1, 19602-1, 19603-1, 19604-1, 19605-1, 19606-1, 19607-1, 19608-1, 19609-1, 19610-1, 19611-1, 19612-1, 19613-1, 19614-1, 19615-1, 19616-1, 19617-1, 19618-1, 19619-1, 19620-1, 19621-1, 19622-1, 19623-1, 19624-1, 19625-1, 19626-1, 19627-1, 19628-1, 19629-1, 19630-1, 19631-1, 19632-1, 19633-1, 19634-1, 19635-1, 19636-1, 19637-1, 19638-1, 19639-1, 19640-1, 19641-1, 19642-1, 19643-1, 19644-1, 19645-1, 19646-1, 19647-1, 19648-1, 19649-1, 19650-1, 19651-1, 19652-1, 19653-1, 19654-1, 19655-1, 19656-1, 19657-1, 19658-1, 19659-1, 19660-1, 19661-1, 19662-1, 19663-1, 19664-1, 19665-1, 19666-1, 19667-1, 19668-1, 19669-1, 19670-1, 19671-1, 19672-1, 19673-1, 19674-1, 19675-1, 19676-1, 19677-1, 19678-1, 19679-1, 19680-1, 19681-1, 19682-1, 19683-1, 19684-1, 19685-1, 19686-1, 19687-1, 19688-1, 19689-1, 19690-1, 19691-1, 19692-1, 19693-1, 19694-1, 19695-1, 19696-1, 19697-1, 19698-1, 19699-1, 19700-1, 19701-1, 19702-1, 19703-1, 19704-1, 19705-1, 19706-1, 19707-1, 19708-1, 19709-1, 19710-1, 19711-1, 19712-1, 19713-1, 19714-1, 19715-1, 19716-1, 19717-1, 19718-1, 19719-1, 19720-1, 19721-1, 19722-1, 19723-1, 19724-1, 19725-1, 19726-1, 19727-1, 19728-1, 19729-1, 19730-1, 19731-1, 19732-1, 19733-1, 19734-1, 19735-1, 19736-1, 19737-1, 19738-1, 19739-1, 19740-1, 19741-1, 19742-1, 19743-1, 19744-1, 19745-1, 19746-1, 19747-1, 19748-1, 19749-1, 19750-1, 19751-1, 19752-1, 19753-1, 19754-1, 19755-1, 19756-1, 19757-1, 19758-1, 19759-1, 19760-1, 19761-1, 19762-1, 19763-1, 19764-1, 19765-1, 19766-1, 19767-1, 19768-1, 19769-1, 19770-1, 19771-1, 19772-1, 19773-1, 19774-1, 19775-1, 19776-1, 19777-1, 19778-1, 19779-1, 19780-1, 19781-1, 19782-1, 19783-1, 19784-1, 19785-1, 19786-1, 19787-1, 19788-1, 19789-1, 19790-1, 19791-1, 19792-1, 19793-1, 19794-1, 19795-1, 19796-1, 19797-1, 19798-1, 19799-1, 19800-1, 19801-1, 19802-1, 19803-1, 19804-1, 19805-1, 19806-1, 19807-1, 19808-1, 19809-1, 19810-1, 19811-1, 19812-1, 19813-1, 19814-1, 19815-1, 19816-1, 19817-1, 19818-1, 19819-1, 19820-1, 19821-1, 19822-1, 19823-1, 19824-1, 19825-1, 19826-1, 19827-1, 19828-1, 19829-1, 19830-1, 19831-1, 19832-1, 19833-1, 19834-1, 19835-1, 19836-1, 19837-1, 19838-1, 19839-1, 19840-1, 19841-1, 19842-1, 19843-1, 19844-1, 19845-1, 19846-1, 19847-1, 19848-1, 19849-1, 19850-1, 19851-1, 19852-1, 19853-1, 19854-1, 19855-1, 19856-1, 19857-1, 19858-1, 19859-1, 19860-1, 19861-1, 19862-1, 19863-1, 19864-1, 19865-1, 19866-1, 19867-1, 19868-1, 19869-1, 19870-1, 19871-1, 19872-1, 19873-1, 19874-1, 19875-1, 19876-1, 19877-1, 19878-1, 19879-1, 19880-1, 19881-1, 19882-1, 19883-1, 19884-1, 19885-1, 19886-1, 19887-1, 19888-1, 19889-1, 19890-1, 19891-1, 19892-1, 19893-1, 19894-1, 19895-1, 19896-1, 19897-1, 19898-1, 19899-1, 19900-1, 19901-1, 19902-1, 19903-1, 19904-1, 19905-1, 19906-1, 19907-1, 19908-1, 19909-1, 19910-1, 19911-1, 19912-1, 19913-1, 19914-1, 19915-1, 19916-1, 19917-1, 19918-1, 19919-1, 19920-1, 19921-1, 19922-1, 19923-1, 19924-1, 19925-1, 19926-1, 19927-1, 19928-1, 19929-1, 19930-1, 19931-1, 19932-1, 19933-1, 19934-1, 19935-1, 19936-1, 19937-1, 19938-1, 19939-1, 19940-1, 19941-1, 19942-1, 19943-1, 19944-1, 19945-1, 19946-1, 19947-1, 19948-1, 19949-1, 19950-1, 19951-1, 19952-1, 19953-1, 19954-1, 19955-1, 19956-1, 19957-1, 19958-1, 19959-1, 19960-1, 19961-1, 19962-1, 19963-1, 19964-1, 19965-1, 19966-1, 19967-1, 19968-1, 19969-1, 19970-1, 19971-1, 19972-1, 19973-1, 19974-1, 19975-1, 19976-1, 19977-1, 19978-1, 19979-1, 19980-1, 19981-1, 19982-1, 19983-1, 19984-1, 19985-1, 19986-1, 19987-1, 19988-1, 19989-1, 19990-1, 19991-1, 19992-1, 19993-1, 19994-1, 19995-1, 19996-1, 19997-1, 19998-1, 19999-1, 20000-1, 20001-1, 20002-1, 20003-1, 20004-1, 20005-1, 20006-1, 20007-1, 20008-1, 20009-1, 20010-1, 20011-1, 20012-1, 20013-1, 20014-1, 20015-1, 20016-1, 20017-1, 20018-1, 20019-1, 20020-1, 20021-1, 20022-1, 20023-1, 20024-1, 20025-1, 20026-1, 20027-1, 20028-1, 20029-1, 20030-1, 20031-1, 20032-1, 20033-1, 20034-1, 20035-1, 20036-1, 20037-1, 20038-1, 20039-1, 20040-1, 20041-1, 20042-1, 20043-1, 20044-1, 20045-1, 20046-1, 20047-1, 20048-1, 20049-1, 20050-1, 20051-1, 20052-1, 20053-1, 20054-1, 20055-1, 20056-1, 20057-1, 20058-1, 20059-1, 20060-1, 20061-1, 20062-1, 20063-1, 20064-1, 20065-1, 20066-1, 20067-1, 20068-1, 20069-1, 20070-1, 20071-1, 20072-1, 20073-1, 20074-1, 20075-1, 20076-1, 20077-1, 20078-1, 20079-1, 20080-1, 20081-1, 20082-1, 20083-1, 20084-1, 20085-1, 20086-1, 20087-1, 20088-1, 20089-1, 20090-1, 20091-1, 20092-1, 20093-1, 20094-1, 20095-1, 20096-1, 20097-1, 20098-1, 20099-1, 20100-1, 20101-1, 20102-1, 20103-1, 20104-1, 20105-1, 20106-1, 20107-1, 20108-1, 20109-1, 20110-1, 20111-1, 20112-1, 20113-1, 20114-1, 20115-1, 20116-1, 20117-1, 20118-1, 20119-1, 20120-1, 20121-1, 20122-1, 20123-1, 20124-1, 20125-1, 20126-1, 20127-1, 20128-1, 20129-1, 20130-1, 20131-1, 20132-1, 20133-1, 20134-1, 20135-1, 20136-1, 20137-1, 20138-1, 20139-1, 20140-1, 20141-1, 20142-1, 20143-1, 20144-1, 20145-1, 20146-1, 20147-1, 20148-1, 20149-1, 20150-1, 20151-1, 20152-1, 20153-1, 20154-1, 20155-1, 20156-1, 20157-1, 20158-1, 20159-1, 20160-1, 20161-1, 20162-1, 20163-1, 20164-1, 20165-1, 20166-1, 20167-1, 20168-1, 20169-1, 20170-1, 20171-1, 20172-1, 20173-1, 20174-1, 20175-1, 20176-1, 20177-1, 20178-1, 20179-1, 20180-1, 20181-1, 20182-1, 20183-1, 20184-1, 20185-1, 20186-1, 20187-1, 20188-1, 20189-1, 20190-1, 20191-1, 20192-1, 20193-1, 20194-1, 20195-1, 20196-1, 20197-1, 20198-1, 20199-1, 20200-1, 20201-1, 20202-1, 20203-1, 20204-1, 20205-1, 20206-1, 20207-1, 20208-1, 20209-1, 20210-1, 20211-1, 20212-1, 20213-1, 20214-1, 20215-1, 20216-1, 20217-1, 20218-1, 20219-1, 20220-1, 20221-1, 20222-1, 20223-1, 20224-1, 20225-1, 20226-1, 20227-1, 20228-1, 20229-1, 20230-1, 20231-1, 20232-1, 20233-1, 20234-1, 20235-1, 20236-1, 20237-1, 20238-1, 20239-1, 20240-1, 20241-1, 20242-1, 20243-1, 20244-1, 20245-1, 20246-1, 20247-1, 20248-1, 20249-1, 20250-1, 20251-1, 20252-1, 20253-1, 20254-1, 20255-1, 20256-1, 20257-1, 20258-1, 20259-1, 20260-1, 20261-1, 20262-1, 20263-1, 20264-1, 20265-1, 20266-1, 20267-1, 20268-1, 20269-1, 20270-1, 20271-1, 20272-1, 20273-1, 20274-1, 20275-1, 20276-1, 20277-1, 20278-1, 20279-1, 20280-1, 20281-1, 20282-1, 20283-1, 20284-1, 20285-1, 20286-1, 20287-1, 20288-1, 20289-1, 20290-1, 20291-1, 20292-1, 20293-1, 20294-1, 20295-1, 20296-1, 20297-1, 20298-1, 20299-1, 20300-1, 20301-1, 20302-1, 20303-1, 20304-1, 20305-1, 20306-1, 20307-1, 20308-1, 20309-1, 20310-1, 20311-1, 20312-1, 20313-1, 20314-1, 20315-1, 20316-1, 20317-1, 20318-1, 20319-1, 20320-1, 20321-1, 20322-1, 20323-1, 20324-1, 20325-1, 20326-1, 20327-1, 20328-1, 20329-1, 20330-1, 20331-1, 20332-1, 20333-1, 20334-1, 20335-1, 20336-1, 20337-1, 20338-1, 20339-1, 20340-1, 20341-1, 20342-1, 20343-1, 20344-1, 20345-1, 20346-1, 20347-1, 20348-1, 20349-1, 20350-1, 20351-1, 20352-1, 20353-1, 20354-1, 20355-1, 20356-1, 20357-1, 20358-1, 20359-1, 20360-1, 20361-1, 20362-1, 20363-1, 20364-1, 20365-1, 20366-1, 20367-1, 20368-1, 20369-1, 20370-1, 20371-1, 20372-1, 20373-1, 20374-1, 20375-1, 20376-1, 20377-1, 20378-1, 20379-1, 20380-1, 20381-1, 20382-1, 20383-1, 20384-1, 20385-1, 20386-1, 20387-1, 20388-1, 20389-1, 20390-1, 20391-1, 20392-1, 20393-1, 20394-1, 20395-1, 20396-1, 20397-1, 20398-1, 20399-1, 20400-1, 20401-1, 20402-1, 20403-1, 20404-1, 20405-1, 20406-1, 20407-1, 20408-1, 20409-1, 20410-1, 20411-1, 20412-1, 20413-1, 20414-1, 20415-1, 20416-1, 20417-1, 20418-1, 20419-1, 20420-1, 20421-1, 20422-1, 20423-1, 20424-1, 20425-1, 20426-1, 20427-1, 20428-1, 20429-1, 20430-1, 20431-1, 20432-1, 20433-1, 20434-1, 20435-1, 20436-1, 20437-1, 20438-1, 20439-1, 20440-1, 20441-1, 20442-1, 20443-1, 20444-1, 20445-1, 20446-1, 20447-1, 20448-1, 20449-1, 20450-1, 20451-1, 20452-1, 20453-1, 20454-1, 20455-1, 20456-1, 20457-1, 20458-1, 20459-1, 20460-1, 20461-1, 20462-1, 20463-1, 20464-1, 20465-1, 20466-1, 20467-1, 20468-1, 20469-1, 20470-1, 20471-1, 20472-1, 20473-1, 20474-1, 20475-1, 20476-1, 20477-1, 20478-1, 20479-1, 2