

**SUBMITTAL TO THE BOARD OF SUPERVISORS  
COUNTY OF RIVERSIDE, STATE OF CALIFORNIA**

354



**FROM:** County Counsel

**SUBMITTAL DATE:** June 4, 2003

**SUBJECT:** Ordinance No. 348.4112

**RECOMMENDED MOTION:** That the Board of Supervisors adopt Ordinance No. 348.4112 amending the zoning in the Bermuda Dunes District shown on Map No. 30.077 Change of Zone Case No. 6679.

**BACKGROUND:** Change of Zone Case No. 6679 was approved by the Board of Supervisors on May 20, 2003.

*Katherine A. Lind*

KATHERINE A. LIND  
Deputy County Counsel

**C.E.O. RECOMMENDATION:**

**APPROVE**

*Lisa Brandt*

County Executive Office Signature

Policy

Policy

Consent

Consent

Department Recommendation:

Per Executive Office:

Prev. Agn. ref.

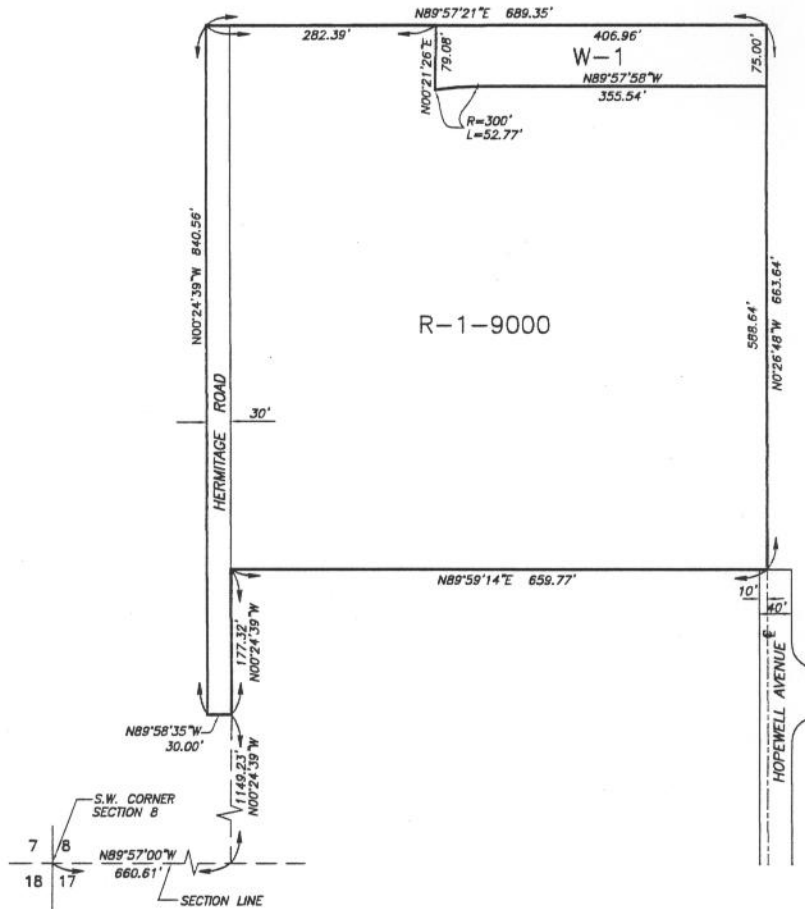
Dist. 4

AGENDA NO.

2.27



SECTION 8, T5S, R7E, SBM.



LEGEND

- R-1-9000 ONE FAMILY DWELLING, 9,000 SQ. FT. MINIMUM
- W-1 WATERCOURSE



SCALE: 1 INCH = 100 FEET

MAP NO. 30.077  
 CHANGE OF OFFICIAL ZONING PLAN  
 BERMUDA DUNES DISTRICT  
 CHANGE OF ZONE CASE NO. 06679  
 AMENDING ORDINANCE NO. 348  
 ADOPTED BY ORDINANCE NO. 348.4112  
 DATE: JUNE 17, 2003