

SUBMITTAL TO THE BOARD OF SUPERVISORS
COUNTY OF RIVERSIDE, STATE OF CALIFORNIA

332 B



FROM: TLMA – Transportation Dept. SUBMITTAL DATE: June 9, 2003

SUBJECT: Approval of **TRACT 28880-3**
A Schedule "A" Subdivision in the Eastvale Area

RECOMMENDED MOTION: That the Board approve the Improvement Agreements and Securities as approved by County Counsel, approve the final map and authorize the Chairman to sign the Improvement Agreements and map for Tract 28880-3.

BACKGROUND: This map complies in all respects with the provisions of Division 3 of Title 15 of the Government Code and applicable local ordinances. The developer desires to enter into Improvement Agreements to guarantee the construction of the required improvements and has submitted Improvement Agreements and Securities which have been approved by County Counsel.

REVIEWED BY EXECUTIVE OFFICE
[Signature]
DATE: 6/14/03

HS:lf

Submittals: Final Map
Road/Drainage Improvement Agrmts
Water System Improvement Agrmts
Sewer System Improvement Agrmts
Survey Monument Agreements

[Signature]
George A. Johnson
Director of Transportation

Policy

Department Recommendation: Consent

Per Executive Office: Consent

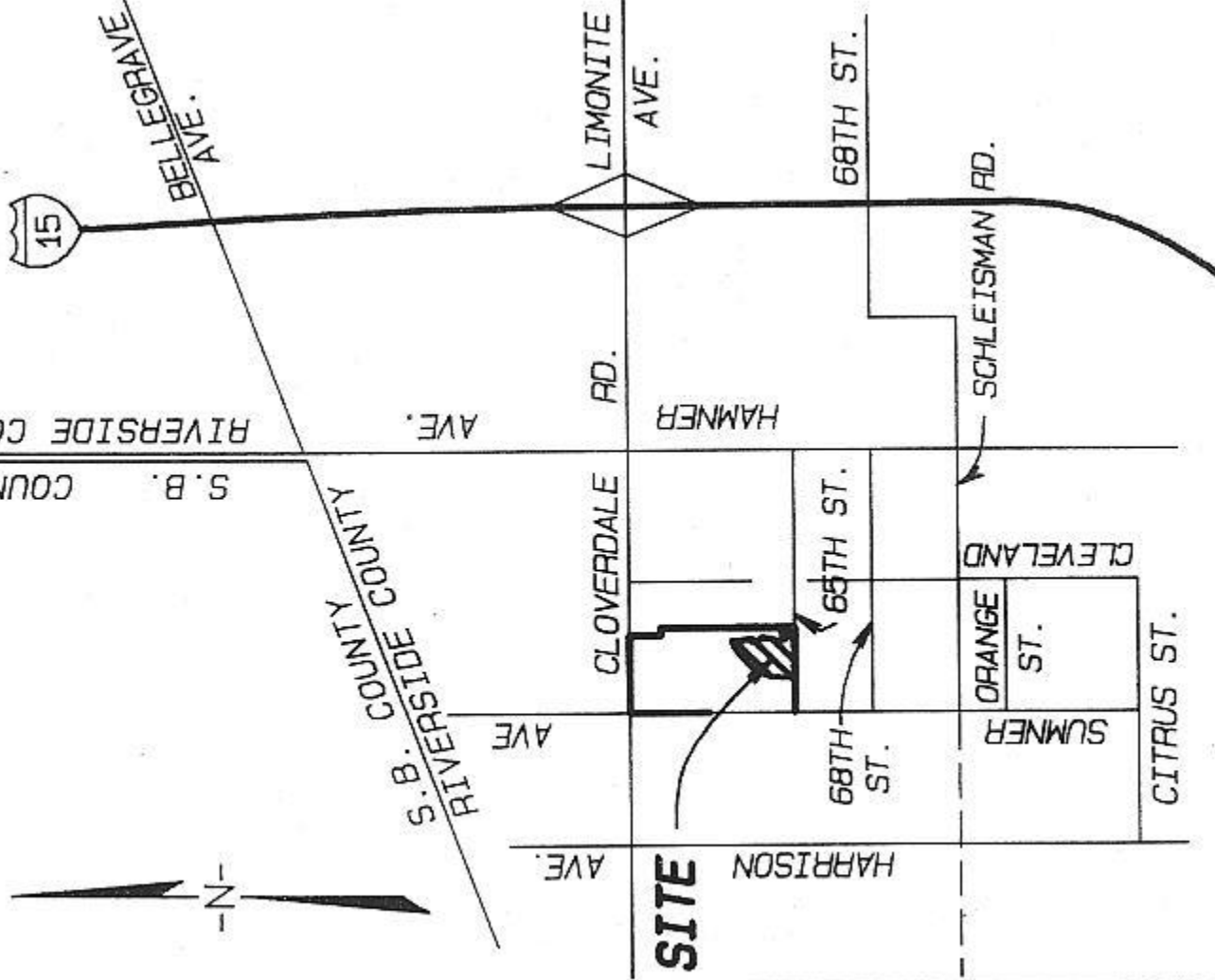
Prev. Agn. Ref: ATTACHMENTS FILED Dist 2

WITH THE CLERK OF THE BOARD

AGENDA NO.

2.30

TAKEN AS NORTH 89°54'20" EAST, AS SHOWN BY PAHL NO. 29249. PM 198/74-76.



- 2. ● INDICATES FOUND 1" IP TAGS UNLESS OTHERWISE NOTED.
- 3. ▲ INDICATES FOUND 1" I.P. TAG
- 4. ■ INDICATES FOUND 1" I.P. TAG
M.B. ---/---. ←
- 5. ○ INDICATES SET 1" I.P. TAGGE
- 6. () INDICATES RECORD AND MEASUR OTHERWISE NOTED.
- 7. < > INDICATES RECORD AND MEASUREMENT
- 8. [] INDICATES RECORD AND MEASURED DATA PER LOT NO. 4583, RECORDED 5/27/03 INST. NO. 377464,
- 9. { } INDICATES RECORD AND MEASURED DATA PER LOT NO. 4584, RECORDED 5/22/03 INST. NO. 371469,
- 10. SET 1" I.P. TAGGED LS 5529, FLUSH, AT ALL REAR CORNER CUTBACKS AND ANGLE POINTS. WHERE REAR BLOCK WALLS EXIST, SET NAIL AND TAG LS 5529 (FACE OF REAR BLOCK WALL IN LIEU OF 1" IP AT
- 11. SET STEEL PIN AND TAG LS 5529 IN TOP OF CURE LOT LINES PROJECTED PER STD. "E".
- 12. LLLLLL INDICATES RESTRICTED ACCESS.
- 13. TRACT CONTAINS 33.26 ACRES GROSS.

VICINITY MAP

NOT TO SCALE