

SUBMITTAL TO THE BOARD OF SUPERVISORS
COUNTY OF RIVERSIDE, STATE OF CALIFORNIA

333B



FROM: TLMA – Transportation Dept. SUBMITTAL DATE: June 9, 2003

SUBJECT: Approval of TRACT 28880-4
A Schedule "A" Subdivision in the Eastvale Area

RECOMMENDED MOTION: That the Board approve the Improvement Agreements and Securities as approved by County Counsel, approve the final map and authorize the Chairman to sign the Improvement Agreements and map for Tract 28880-4.

BACKGROUND: This map complies in all respects with the provisions of Division 3 of Title 15 of the Government Code and applicable local ordinances. The developer desires to enter into Improvement Agreements to guarantee the construction of the required improvements and has submitted Improvement Agreements and Securities which have been approved by County Counsel.

REVIEWED BY EXECUTIVE OFFICE
George A. Johnson
DATE 6/16/03

George A. Johnson
George A. Johnson
Director of Transportation

HS:lf
Submittals: Final Map
Road/Drainage Improvement Agrmts
Water System Improvement Agrmts
Sewer System Improvement Agrmts
Survey Monument Agreements

Department Recommendation: Consent Policy
Per Executive Office: Consent Policy

Prev. Agn. Ref.

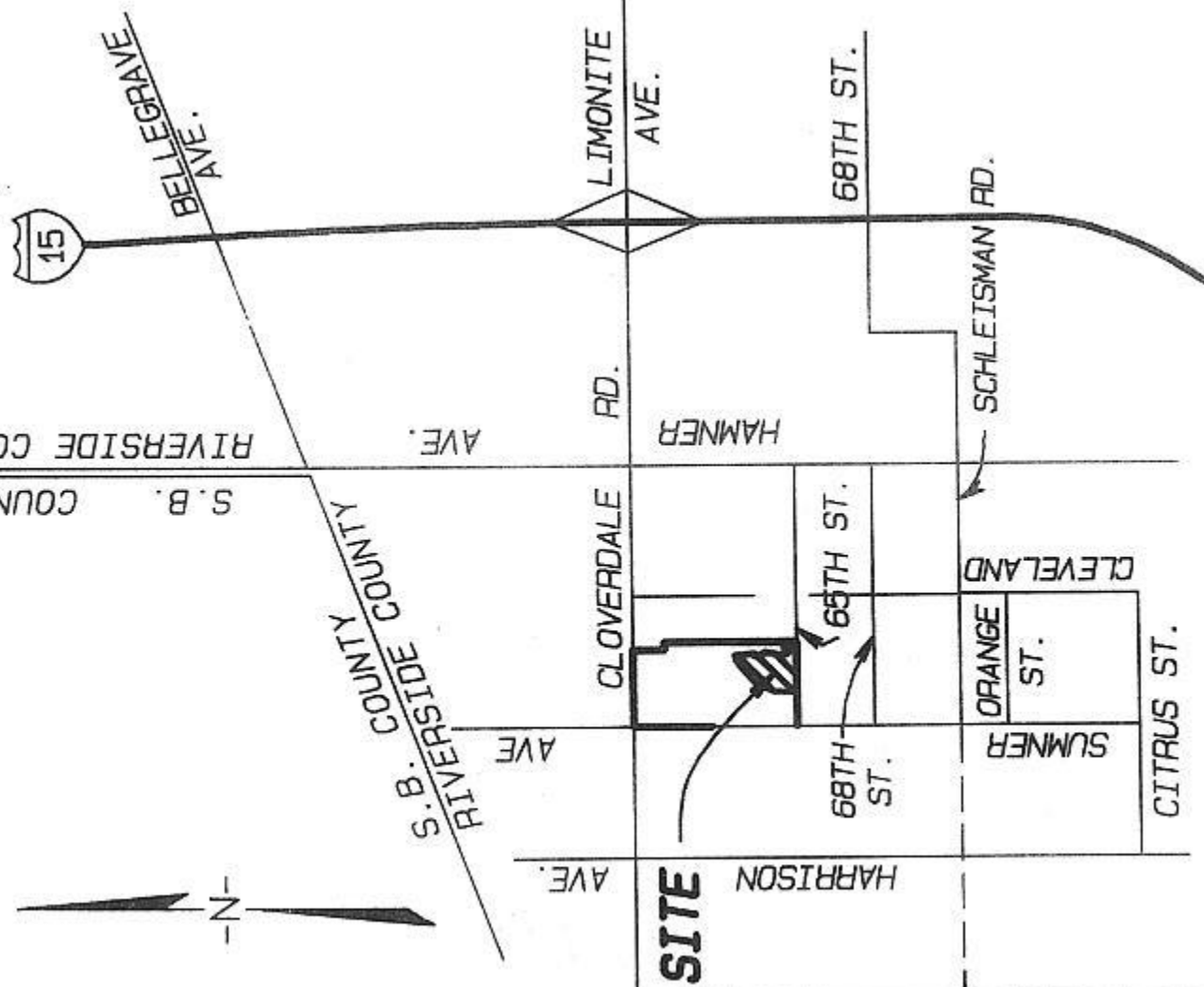
Dist 2

ATTACHMENTS FILED
WITH THE CLERK OF THE BOARD

AGENDA NO.

2.31

TAKEN AS NORTH 89°54'20" EAST, AS SHOWN BY PARCEL NO. 29249. PM 198/74-76.



2. ● INDICATES FOUND 1" IP TAGG
UNLESS OTHERWISE NOTED.

3. ▲ INDICATES FOUND 1" I.P. TAG

4. ■ INDICATES FOUND 1" I.P. TAG
M.B. / - - - - -

5. ○ INDICATES SET 1" I.P. TAGGE

6. () INDICATES RECORD AND MEASUR
OTHERWISE NOTED.

7. < > INDICATES RECORD AND MEASUR

8. [] INDICATES RECORD AND MEASURED DATA PER LOT L
NO. 4583, RECORDED 5/27/03 INST. NO. 377464, 0

9. { } INDICATES RECORD AND MEASURED DATA PER LOT L
NO. 4584, RECORDED 5/22/03 INST. NO. 371469, 0

10. SET 1" I.P. TAGGED LS 5529, FLUSH, AT ALL REAR
CORNER CUTBACKS AND ANGLE POINTS. WHERE REAR
BLOCK WALLS EXIST, SET NAIL AND TAG LS 5529 UP
FACE OF REAR BLOCK WALL IN LIEU OF 1" IP AT RE

11. SET STEEL PIN AND TAG LS 5529 IN TOP OF CURB
LOT LINES PROJECTED PER STD. "E".

12. / / / / / INDICATES RESTRICTED ACCESS.

13. TRACT CONTAINS 33.26 ACRES GROSS.

VICINITY MAP

NOT TO SCALE