

597
SUBMITTAL TO THE BOARD OF SUPERVISORS
COUNTY OF RIVERSIDE, STATE OF CALIFORNIA



FROM: County Counsel

SUBMITTAL DATE: June 18, 2003

SUBJECT: Ordinance No. 348.4114

RECOMMENDED MOTION: That the Board of Supervisors adopt Ordinance No. 348.4114 amending the zoning in the Bermuda Dunes District shown on Map No. 30.078 Change of Zone Case No. 6750.

BACKGROUND: Change of Zone Case No. 6750 was approved by the Board of Supervisors on June 17, 2003.

Katherine A. Lind
KATHERINE A. LIND
Deputy County Counsel

C.E.O. RECOMMENDATION: **APPROVE**

Iva Brandt

County Executive Office Signature

Policy
 Policy

Consent
 Consent

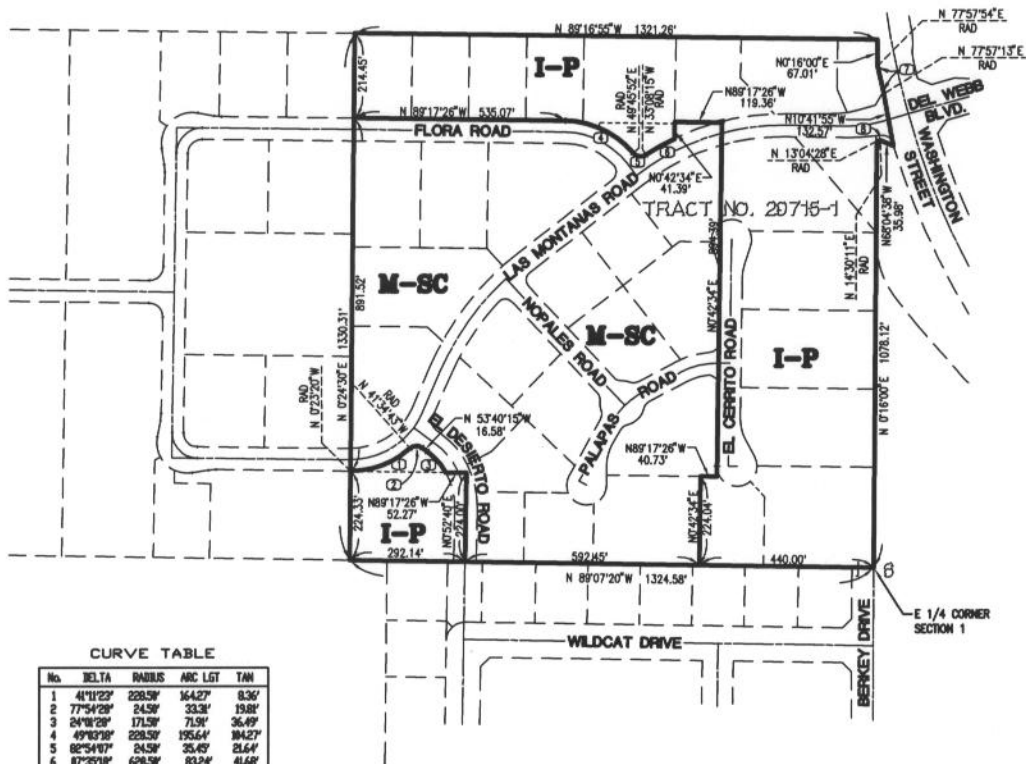
Department Recommendation:
Per Executive Office:

Prev. Agn. ref.

Dist. 4

AGENDA NO.

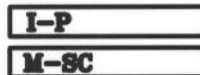
2.16



CURVE TABLE

No.	BETA	RADIUS	ARC LGT	TAN
1	41°11'23"	220.50'	164.27'	0.36'
2	77°54'28"	24.50'	33.31'	19.81'
3	24°08'28"	171.50'	71.91'	36.49'
4	49°03'38"	220.50'	195.64'	104.27'
5	82°54'07"	24.50'	33.45'	21.64'
6	87°25'18"	628.50'	83.24'	41.68'
7	82°08'42"	2947.80'	71.87'	35.54'
8	81°22'43"	344.80'	6.58'	4.29'

LEGEND



I-P INDUSTRIAL PARK
 M-SC MANUFACTURING - SERVICE COMMERCIAL



SCALE 1" = 200'



MAP NO. 30.078
CHANGE OF OFFICIAL ZONING PLAN

BERMUDA DUNES DISTRICT

CHANGE OF ZONE CASE NO. CZ 6760
 AMENDING ORDINANCE NO. 348
 ADOPTED BY ORDINANCE NO. 348.4114

JULY 1, 2003