

SUBMITTAL TO THE BOARD OF SUPERVISORS
COUNTY OF RIVERSIDE, STATE OF CALIFORNIA

510 B



FROM: TLMA – Transportation Dept.

SUBMITTAL DATE: June 23, 2003

SUBJECT: TRACT 28977-1

A Schedule "A" Subdivision in the Bermuda Dunes Area
**ONE YEAR GUARANTEE AND MAINTENANCE
AGREEMENTS**

RECOMMENDED MOTION: That the Board approve the attached One Year Guarantee and Maintenance Agreements as approved by County Counsel and authorize the Chairman to sign these agreements for Tract 28977-1.

BACKGROUND: Improvements have been completed or are approaching completion on this project. Del Webb California Corp. desires to enter into Maintenance Agreements to guarantee a one year maintenance of the improvements and has submitted agreements and securities which have been approved by County Counsel.

REVIEWED BY EXECUTIVE OFFICE
[Signature]
DATE 6/25/03

[Signature]
George A. Johnson
Director of Transportation

HS:lf
Submittals: Vicinity Map
Road/Drainage Maintenance Agrmts

Department Recommendation: Consent Policy
Per Executive Office: Consent Policy

Prev. Agn. Ref. 01/11/00 - 2.13

Dist. 4

AGENDA NO.

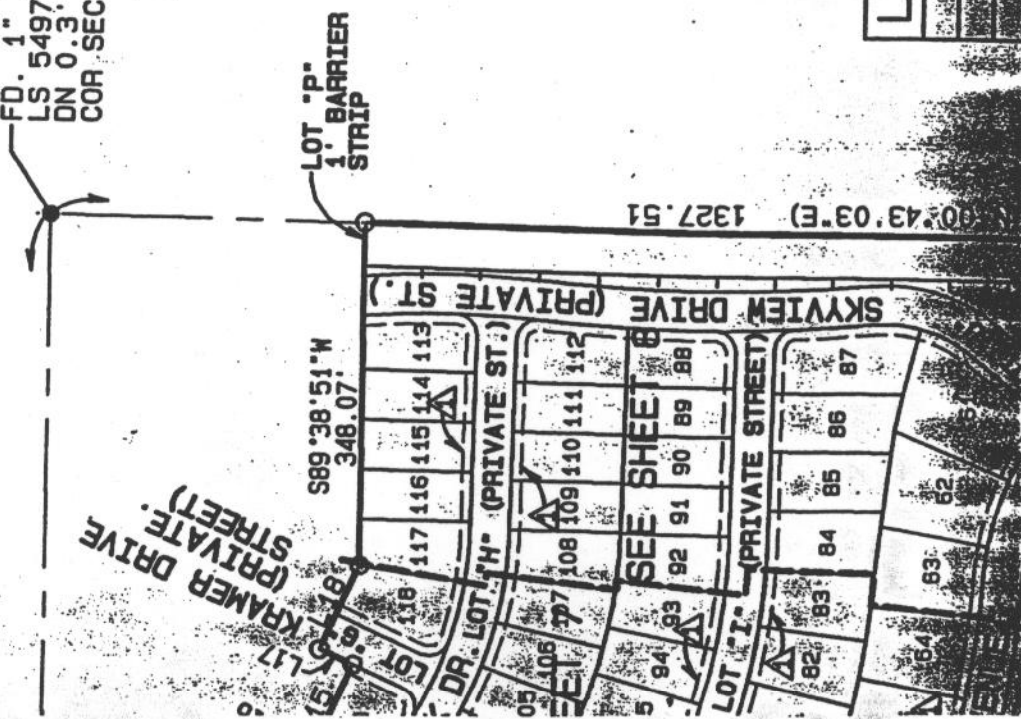
2.28

ENVIRONMENTAL CONSTRAINT NOTE:

ENVIRONMENTAL CONSTRAINT SHEET AFFECTING THIS MAP IS ON FILE IN THE OFFICE OF THE RIVERSIDE COUNTY SURVEYOR, IN E.C.S. BOOK 29 PAGE 66. THIS AFFECTS ALL LOTS.

FD. 1" I.P. W/ PLASTIC PLUG
 LS 5497 PER MB 273/9-16
 DN 0.3. ACCEPTED AS NE
 COR. SEC 31

PROJECT SITE



VICINITY MAP
 N.T.S.

LINE	BEARING	DISTANCE
1	N80°52'41"W	110.00
2	S82°40'24"W	121.20
3	S82°43'14"W	140.80