

**SUBMITTAL TO THE BOARD OF SUPERVISORS
COUNTY OF RIVERSIDE, STATE OF CALIFORNIA**

7750



FROM: TLMA – Transportation Dept.

SUBMITTAL DATE: July 24, 2003

SUBJECT: Landscaping & Lighting Maintenance District No. 89-1-Consolidated,
Annexation of Location 31 into Zone 3

RECOMMENDED MOTION: That the Board declare the mailed ballot election with regard to the annexation of Location 31 into Zone 3 of Landscaping and Lighting Maintenance District No. 89-1-Consolidated be declared a nullity due to the fact that no ballots were received.

BACKGROUND: Pursuant to the Landscaping and Lighting Act of 1972 and Resolution No. 2003-236, adopted by the Board on June 3, 2003, a mailed ballot election was properly noticed and conducted and directed all eligible voters to return their ballots on or before the conclusion of the public hearing that was noticed for and held on July 29, 2003 at 10:00am. At the conclusion of the public hearing the Transportation Department had received no ballots. By declaring the election a nullity, the Board will not be precluded for one year from reconsidering the annexation of the territory within the proposed Location 31 of Zone 3 into Landscaping and Lighting Maintenance District No. 89-1-Consolidated.

[Signature]
George A. Johnson
Director of Transportation

FORM APPROVED
COUNTY COUNSEL

JUL 16 2003

FINANCIAL DATA:

CURRENT YEAR COST
NET COUNTY COST

\$0
\$0

ANNUAL COST:

\$0

IN CURRENT YEAR BUDGET: Yes/ No/
BUDGET ADJUSTMENT FY: Yes/ No/

SOURCE OF FUNDS: Landscaping & Lighting Maintenance District No. 89-1-Consolidated

C.E.O. RECOMMENDATION:

APPROVE

[Signature]
County Executive Officer Signatu

Policy

Policy

Consent

Consent

Department Recommendation:

Per Executive Office:

Prev. Agn. Ref.

Dist. 3

AGENDA NO.

9.15

DESCRIPTION OF BOUNDARIES

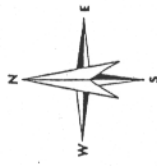
1
2
3
4
5
6
7
8
9
10
11
12
13
14
15
16
17
18
19
20
21
22
23
24
25
26
27
28

The boundaries of Location 31 to be annexed into Zone 3 of Landscaping and Lighting Maintenance District No 89-1-Consolidated, of the County of Riverside are coterminous with the boundaries of APN 362150010 as shown on the Assessment Roll for fiscal year 2002-2003 in the County of Riverside, State of California.

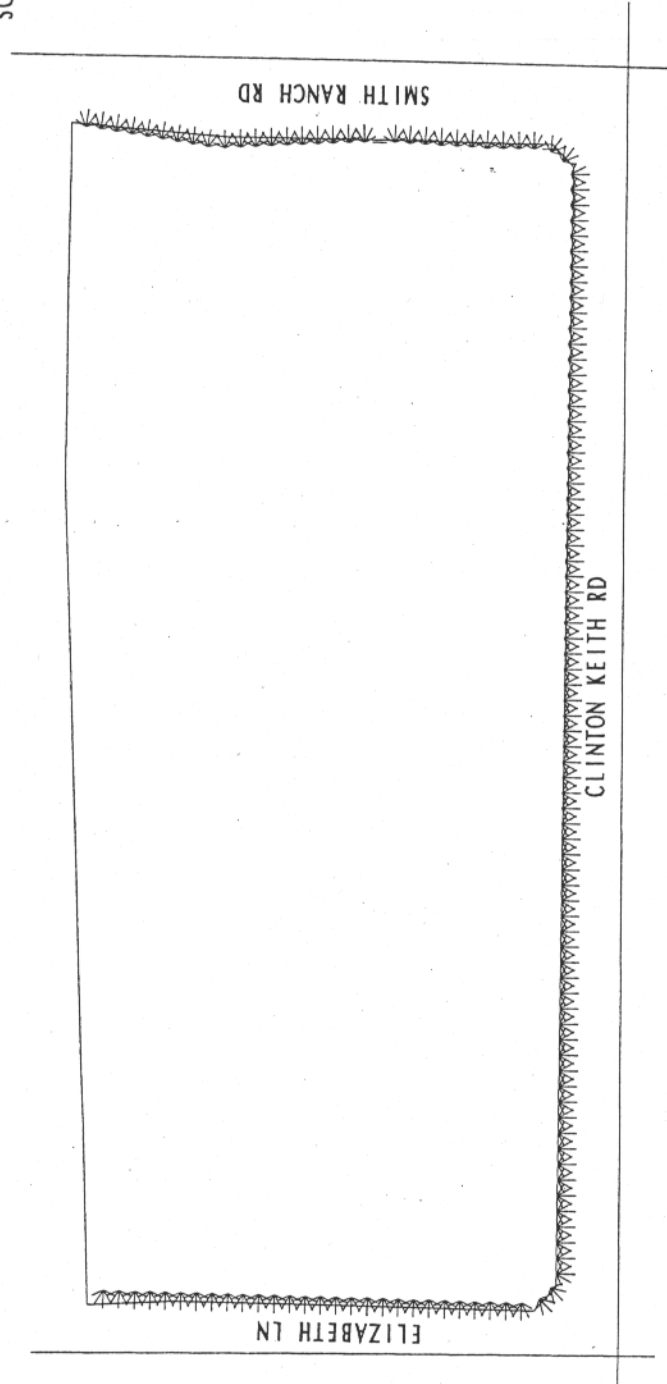
LANDSCAPING & LIGHTING MAINTENANCE DISTRICT NO.89-1-CONSOLIDATED,ZONE 3

LOCATION 31

PORTION OF SECTION 31, T.6S., R.3W.
TRACT 30094
48 PARCELS



SCALE: 1" = 200'



MAY 6, 2003

 DENOTES LANDSCAPED AND MAINTAINED PARKWAY

This map was made by the Riverside County Geographic Information System. The map elements were produced by the Assessor and the Transportation and Land Management Agency which is comprised of the Transportation, Building & Safety, and Planning departments.