

SUBMITTAL TO THE BOARD OF SUPERVISORS
COUNTY OF RIVERSIDE, STATE OF CALIFORNIA

628 B



FROM: TLMA – Transportation Dept. SUBMITTAL DATE: October 10, 2003

SUBJECT: Accepting portions of Wickerd Road for public road and utility purposes, in the Menifee Area, Third Supervisorial District.

RECOMMENDED MOTION: Adopt Resolution NO. 2003-470 accepting the offers of dedication for public road and utility purposes but not into the County Maintained Road System.

BACKGROUND: The Developer of Tract No. 29259 is requesting the acceptance of these offers of dedication to satisfy their conditions of approval for road and utility improvements.

REVIEWED BY EXECUTIVE OFFICE
[Signature]
DATE 10/15/03

FORM APPROVED
COUNTY COUNSEL

SEP 23 2003
BY *[Signature]*

[Signature]
George A. Johnson
Director of Transportation

- Department Recommendation: Consent
- Per Executive Office: Consent
- Policy
- Policy

EDH:rg
Attachments: Resolution No. 2003-470
Attachment
Vicinity Map

RECEIVED
COUNTY OF RIVERSIDE
2003 OCT 12 AM 11:50
FORM APPROVED BY COUNTY COUNSEL

Prev. Agn. Ref.

Dist. 3

AGENDA NO.

2.21

2
3 RESOLUTION NO. 2003-470

4 ACCEPTING OFFERS OF DEDICATION FOR PORTIONS OF WICKERD ROAD FOR
5 PUBLIC USE, IN THE MENIFEE AREA .

6 (Third Supervisorial District)
7

8 **WHEREAS**, the hereinafter-described portions of Wickerd Road shown as Lots "H" and
9 "I", on Parcel Map No. 13032, recorded in Book 78, Page 59 of Parcel Maps, records of the
10 Recorders Office, Riverside County, California, were offered for dedication for public road and
11 utility purposes by said map, which offers of dedications have not been accepted for public use
12 and have not been accepted into the County Maintained Road System, now, therefore;

13
14 **BE IT RESOLVED, DETERMINED AND ORDERED** by the Board of Supervisors of the
15 County of Riverside, State of California, in regular session assembled on, October 21
16 2003, that this Board accepts the offers of dedication and recognizes that said road is a public
17 road open for use by the general public:

18
19 **BE IT FURTHER RESOLVED, DETERMINED, AND ORDERED**, that this acceptance is
20 for the purpose of vesting title in the County of Riverside on behalf of the public for public road
21 and utility uses, but is not an acceptance of the road into the County Maintained Road System
22 pursuant to Section 941 of the Streets and Highways Code and that said road will not become
23 part of the County Maintained Road System unless subsequently accepted into said Maintained
24 Road System by a resolution adopted by this Board;

25 ///

26 ///

27 ///

28 ///

1 RESOLUTION NO. 2003-470

2
3 Said road is in the County of Riverside, State of California and is described as follows:

4
5 **WICKERD ROAD** (See attachment)

6 Wickerd Road, shown as Lots "H" and "I", on Parcel Map No. 13032, recorded in Book 78, Page
7 59 of Parcel Maps, records of the Recorders Office, Riverside County, California,

8
9 **BE IT FURTHER RESOLVED** that the Clerk of the Board shall cause a certified copy of
10 this resolution to be recorded in the Office of the County Recorder of Riverside County, California.

11
12 FORM APPROVED
COUNTY COUNSEL

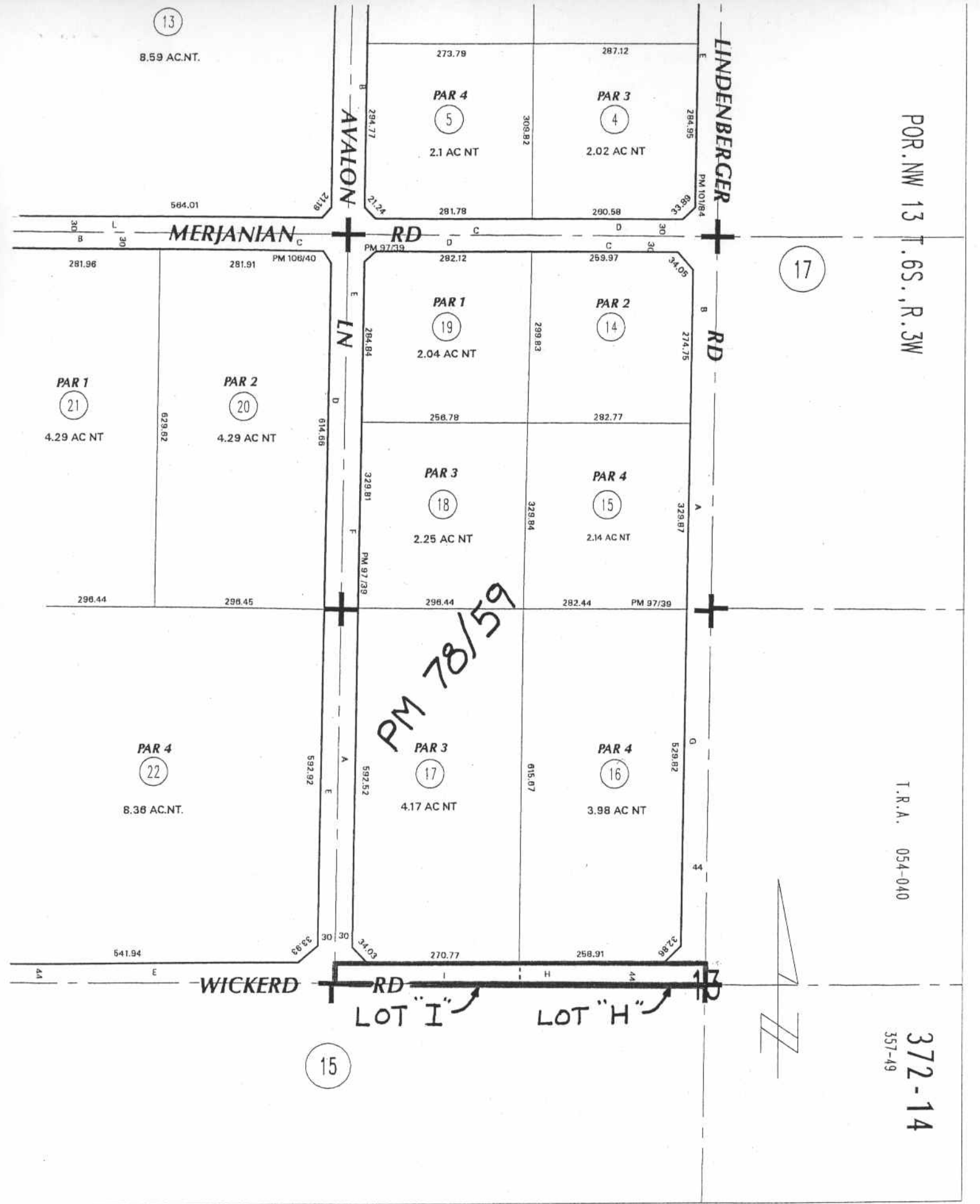
13 SEP 23 2003

14 BY *Jordan V. Woo*

15
16
17
18
19
20
21
22
23
24
25
26 EDH;rg

27 W.O. # FSM29259

28



13
8.59 AC.NT.

273.79
PAR 4
5
2.1 AC NT

287.12
PAR 3
4
2.02 AC NT

LINDENBERGER RD
PM 101/84

POR. NW 13 T. 6S., R. 3W

17

MERJANIAN RD

PAR 1
19
2.04 AC NT

PAR 2
14

PAR 1
21
4.29 AC NT

PAR 2
20
4.29 AC NT

PAR 3
18
2.25 AC NT

PAR 4
15
2.14 AC NT

PM 78/59

PAR 3
17
4.17 AC NT

PAR 4
16
3.98 AC NT

PAR 4
22
8.36 AC.NT.

T.R.A. 054-040

15

LOT "I"

LOT "H"

WICKERD RD

372-14
357-49