

829A



**SUBMITTAL TO THE BOARD OF SUPERVISORS
COUNTY OF RIVERSIDE, STATE OF CALIFORNIA**

FROM: County Counsel
SUBJECT: Ordinance No. 348.4149

SUBMITTAL DATE: October 22, 2003

RECOMMENDED MOTION: That the Board of Supervisors adopt Ordinance No. 348.4149 amending the zoning in the Cathedral City/Palm Desert District shown on Map No. 10.044 Change of Zone Case No. 6770.

BACKGROUND: Change of Zone Case No. 6770 was approved by the Board of Supervisors on October 21, 2003.

Katherine A. Lind
KATHERINE A. LIND
Deputy County Counsel

C.E.O. RECOMMENDATION:

APPROVE *Lisa Brandl*

County Executive Office Signature

- Policy
 - Policy
 - Consent
 - Consent
- Department Recommendation:
Per Executive Office:

2003 OCT 22 5:17 PM
RECEIVED VIA RIVERSIDE COUNTY

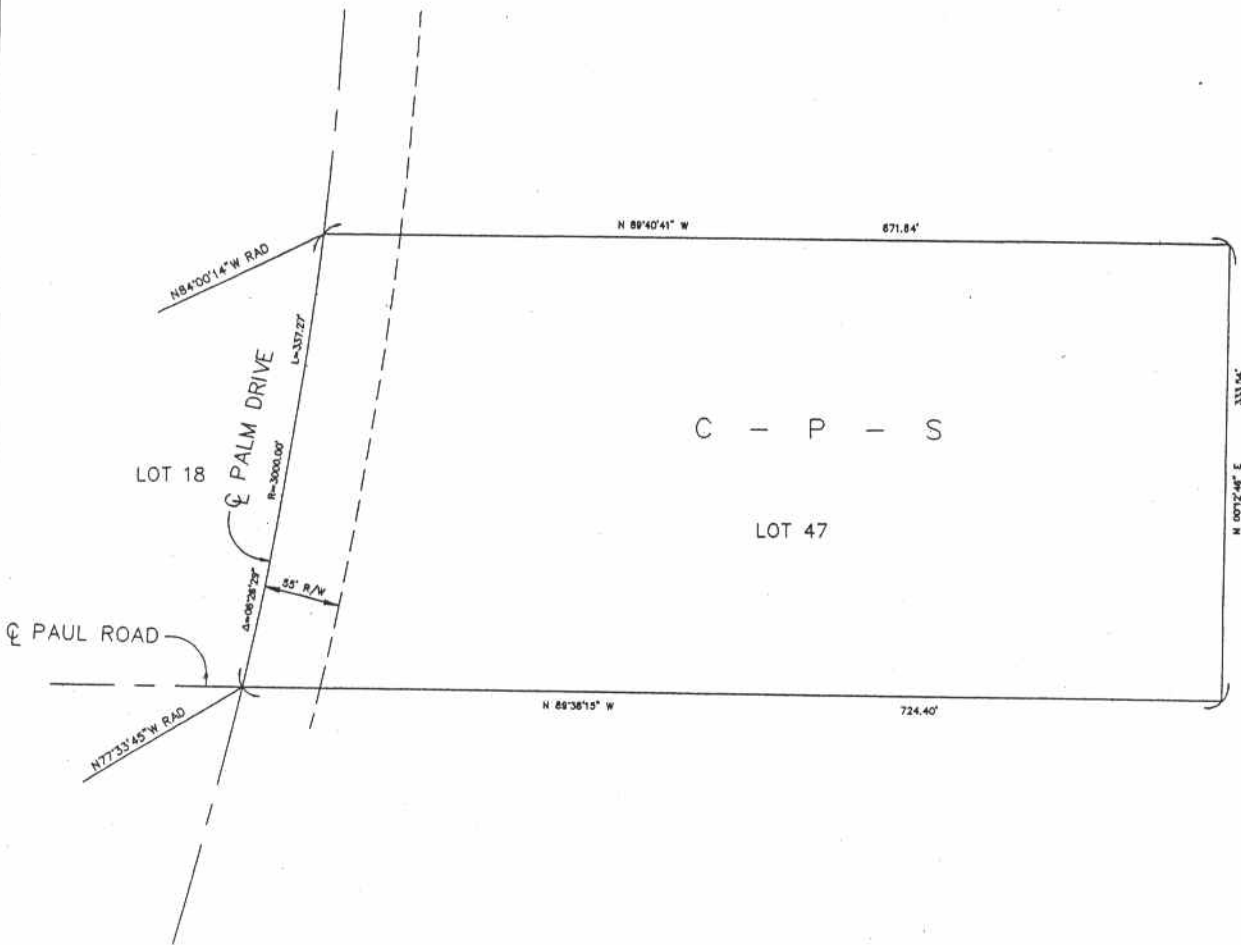
Prev. Agn. ref.

Dist. 5

AGENDA NO.

2.9

SEC. 30, T.3 S., R.5 E., S.B.B. & M.



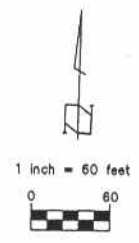
LEGEND

C-P-S SCENIC HIGHWAY COMMERCIAL

MAP NO. 10.044

CHANGE OF OFFICIAL ZONING PLAN
CATHEDRAL CITY - PALM DESERT
DISTRICT

CHANGE OF ZONE CASE NO. 06770
AMENDING ORDINANCE NO. 348
ADOPTED BY ORDINANCE NO. 348.4149
NOVEMBER 4, 2003



APN 660-180-002-3

RIVERSIDE COUNTY BOARD OF SUPERVISORS