

SUBMITTAL TO THE BOARD OF SUPERVISORS
COUNTY OF RIVERSIDE, STATE OF CALIFORNIA

944A



FROM: County Counsel
SUBJECT: Ordinance No. 348.4152

SUBMITTAL DATE: November 5, 2003

RECOMMENDED MOTION: That the Board of Supervisors adopt Ordinance No. 348.4152 amending the zoning in the Winchester Area shown on Map No. 2.2054 Change of Zone Case No. 6802.

BACKGROUND: Change of Zone Case No.6802 was approved by the Board of Supervisors on October 7, 2003.

Kath. A. Lind
KATHERINE A. LIND
Deputy County Counsel

C.E.O. RECOMMENDATION:

APPROVE

Lisa Brandt

County Executive Office Signature

Policy
 Policy

Consent
 Consent

Department Recommendation:
Per Executive Office:

RECEIVED RIVERSIDE COUNTY
CLERK 180180 DE SUPERVISORS
NOV 15 15 5:53

Prev. Agn. ref.

Dist. 3

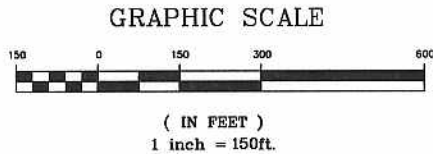
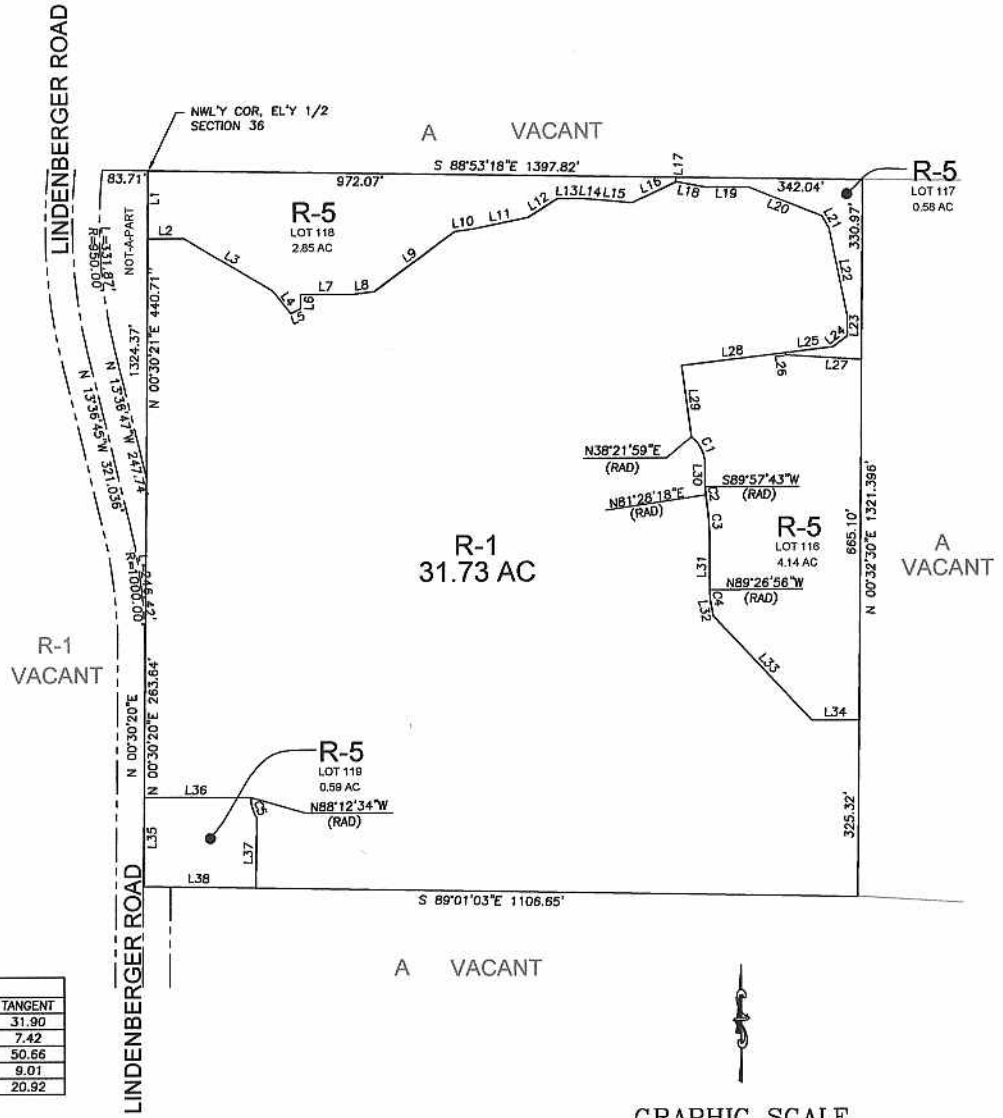
AGENDA NO.

2.13

WINCHESTER AREA SEC. 36 T. 5S, R. 3W S.B.B.&M.

LINE	LENGTH	BEARING
L1	126.36'	N00°30'21"E
L2	65.48'	N89°27'49"E
L3	190.90'	S59°09'30"E
L4	53.72'	S38°41'00"E
L5	20.00'	N65°00'19"E
L6	26.60'	N00°30'19"E
L7	92.63'	S89°14'06"E
L8	42.87'	N82°38'08"E
L9	184.83'	N53°24'01"E
L10	35.04'	N82°19'06"E
L11	102.07'	N78°32'13"E
L12	84.04'	N57°30'51"E
L13	41.32'	N89°09'30"E
L14	29.67'	S84°50'05"E
L15	66.46'	S84°43'14"E
L16	90.39'	N65°24'08"E
L17	8.38'	N01°07'00"E
L18	51.49'	S79°30'57"E
L19	84.07'	S88°53'00"E
L20	142.55'	S68°17'26"E
L21	26.11'	S29°43'38"E
L22	166.59'	S11°33'07"E
L23	35.94'	S00°41'58"W
L24	32.74'	S52°16'50"W
L25	88.54'	S83°13'17"W
L26	4.08'	S07°33'38"E
L27	139.60'	S86°14'57"E
L28	192.16'	S83°13'17"W
L29	133.35'	S07°35'48"E
L30	40.99'	S00°02'17"E
L31	74.53'	S00°33'04"W
L32	30.21'	S09°44'44"E
L33	263.79'	S43°14'45"E
L34	86.97'	S89°26'56"E
L35	164.85'	N00°30'21"E
L36	196.46'	S89°37'40"E
L37	128.75'	S00°58'57"W
L38	206.59'	S89°01'03"E

CURVE	DELTA	RADIUS	LENGTH	TANGENT
C1	51°35'44"	66.00'	59.43'	31.90
C2	8°29'25"	100.00'	14.82'	7.42
C3	9°04'48"	638.00'	101.10'	50.66
C4	10°17'48"	100.00'	17.97'	9.01
C5	35°10'27"	66.00'	40.52'	20.92



LEGEND:

- R-1 ONE-FAMILY DWELLINGS
- R-5 OPEN AREA COMBINING ZONE RESIDENTIAL DEVELOPMENT

MAP NO. 2.2053
**CHANGE OF OFFICIAL ZONING PLAN
 AMENDING
 MAP NO. 2 ORDINANCE NO. 348**
 CHANGE OF ZONE CASE NO. 6802
 ADOPTED BY ORDINANCE NO. 348.4151
 NOVEMBER 18, 2003
 RIVERSIDE COUNTY BOARD OF SUPERVISORS