

535A  
SUBMITTAL TO THE BOARD OF SUPERVISORS  
COUNTY OF RIVERSIDE, STATE OF CALIFORNIA



FROM: County Counsel  
SUBJECT: Ordinance No. 348.4157

SUBMITTAL DATE: December 10, 2003

RECOMMENDED MOTION: That the Board of Supervisors adopt Ordinance No. 348.4157 amending the zoning in the Prado/Mira Loma District shown on Map No. 38.079 Change of Zone Case No. 6738.

BACKGROUND: Change of Zone Case No. 6738 was approved by the Board of Supervisors on August 19, 2003.

*Katherine A. Lind*  
KATHERINE A. LIND  
Deputy County Counsel

C.E.O. RECOMMENDATION: **APPROVE**

*Lisa Brandt*

County Executive Office Signature

Policy  
 Policy

Consent  
 Consent

Department Recommendation:  
Per Executive Office:

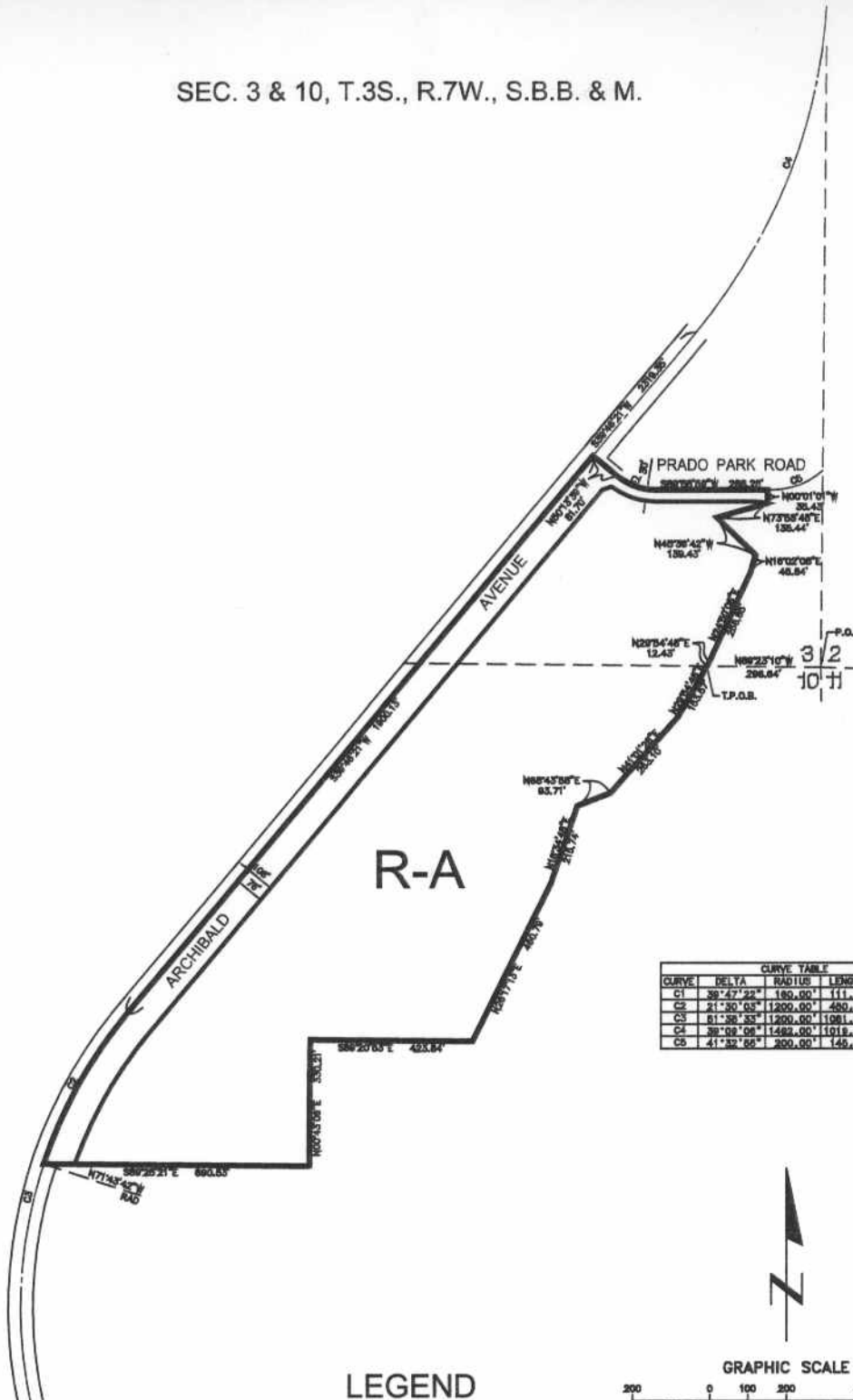
Prev. Agn. ref.

Dist. 2

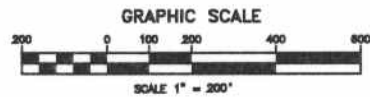
AGENDA NO.



SEC. 3 & 10, T.3S., R.7W., S.B.B. & M.



CURVE TABLE				
CURVE	DELTA	RADIUS	LENGTH	TANGENT
C1	39°47'22"	185.00'	111.11'	87.80'
C2	21°30'03"	1200.00'	430.31'	227.84'
C3	61°58'53"	1200.00'	1081.80'	580.85'
C4	38°09'08"	1463.00'	1018.82'	530.67'
C5	41°32'55"	200.00'	148.63'	75.67'



**LEGEND**

R-A

RESIDENTIAL AGRICULTURAL

MAP NO. 38.079  
 CHANGE OF OFFICIAL ZONING PLAN  
 PRADO-MIRA LOMA  
 DISTRICT  
 CHANGE OF ZONE CASE NO. 6738  
 AMENDING ORDINANCE NO. 348  
 ADOPTED BY ORDINANCE NO. 348.4157  
 DECEMBER 23, 2003  
 RIVERSIDE COUNTY BOARD OF SUPERVISORS

