

SUBMITTAL TO THE BOARD OF SUPERVISORS
COUNTY OF RIVERSIDE, STATE OF CALIFORNIA

634 A



FROM: County Counsel
SUBJECT: Ordinance No. 348.4158

SUBMITTAL DATE: December 17, 2003

RECOMMENDED MOTION: That the Board of Supervisors adopt Ordinance No. 348.4158 amending the zoning in the Prado/Mira Loma District shown on Map No. 38.080 Change of Zone Case No. 6696.

BACKGROUND: Change of Zone Case No. 6696 was approved by the Board of Supervisors on June 24, 2003.

Katherine A. Lind
KATHERINE A. LIND
Deputy County Counsel

C.E.O. RECOMMENDATION:

APPROVE

Lisa Brandl

County Executive Office Signature

Policy
 Policy

Consent
 Consent

Department Recommendation:
Per Executive Office:

03 DEC 30 AM 1:02 5003 DEC 30 AM 5:30
SECRETARY OF THE COUNTY OF RIVERSIDE

Prev. Agn. ref.

Dist. 2

AGENDA NO.

SEC. 24 T. 2 S., R. 7 W., S. B. B. & M.

LINE DATA

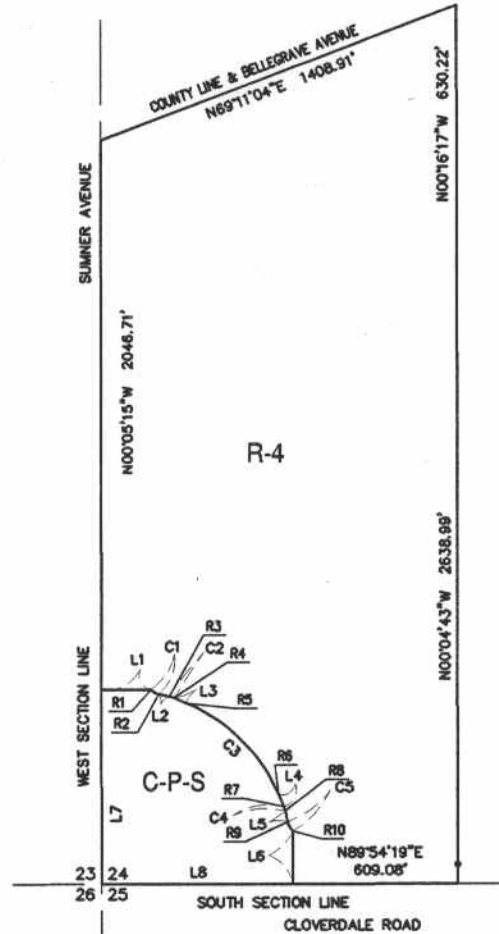
L1 - N90°00'00"E 182.05'
 L2 - N77°13'24"W 40.99'
 L3 - N66°55'37"W 49.25'
 L4 - N23°19'49"W 49.25'
 L5 - N13°02'02"W 40.99'
 L6 - N00°00'00"E 195.96'
 L7 - N00°05'15"W 724.00'
 L8 - N89°54'19"E 710.24'

CURVE DATA

| | DELTA | RADIUS | LENGTH | TANGENT |
|----|-----------|---------|---------|---------|
| C1 | 30°06'40" | 66.00' | 34.69' | 17.75' |
| C2 | 10°17'48" | 100.00' | 17.97' | 9.01' |
| C3 | 43°35'47" | 650.00' | 494.59' | 259.96' |
| C4 | 10°17'48" | 100.00' | 17.97' | 9.01' |
| C5 | 34°59'26" | 66.00' | 40.31' | 20.80' |

RADIAL DATA

BEARING
 R1 - N 42°53'16" E
 R2 - N 12°46'36" E
 R3 - N 12°46'36" E
 R4 - N 23°04'23" E
 R5 - N 23°04'23" E
 R6 - N 66°40'11" E
 R7 - N 66°40'11" E
 R8 - N 76°57'58" E
 R9 - N 76°57'58" E
 R10 - N 41°58'33" E



LEGEND:

- R-4 - PLANNED RESIDENTIAL
- C-P-S - SCENIC - HIGHWAY COMMERCIAL

M A P No. 30.080
CHANGE OF OFFICIAL ZONING PLAN
PRADO-MIRA LOMA
DISTRICT

CHANGE OF ZONE CASE No. 6696

ADOPTED BY ORDINANCE No. 348.4158

JANUARY 06, 2004

RIVERSIDE COUNTY BOARD OF SUPERVISORS

ASSESSORS PARCEL NUMBERS:
 134-070-001-6
 134-080-001
 134-080-002-8
 134-080-006-2



SCALE: 1"=300'