

SUBMITTAL TO THE BOARD OF SUPERVISORS  
COUNTY OF RIVERSIDE, STATE OF CALIFORNIA

635A



FROM: County Counsel

SUBMITTAL DATE: December 23, 2003

SUBJECT: Ordinance No. 348.4160

**RECOMMENDED MOTION:** That the Board of Supervisors adopt Ordinance No. 348.4160 amending the zoning in the Winchester Area shown on Map No. 2.2059 Change of Zone Case No. 6765.

**BACKGROUND:** Change of Zone Case No. 6765 was approved by the Board of Supervisors on August 19, 2003.

*Katherine A. Lind*  
KATHERINE A. LIND  
Deputy County Counsel

C.E.O. RECOMMENDATION:

APPROVE

*Lisa Brandl*

County Executive Office Signature

Policy  
 Policy

Consent  
 Consent

Department Recommendation:  
Per Executive Office:

03 DEC 30 6M 5:30  
RECEIVED V. J. CORNELIA

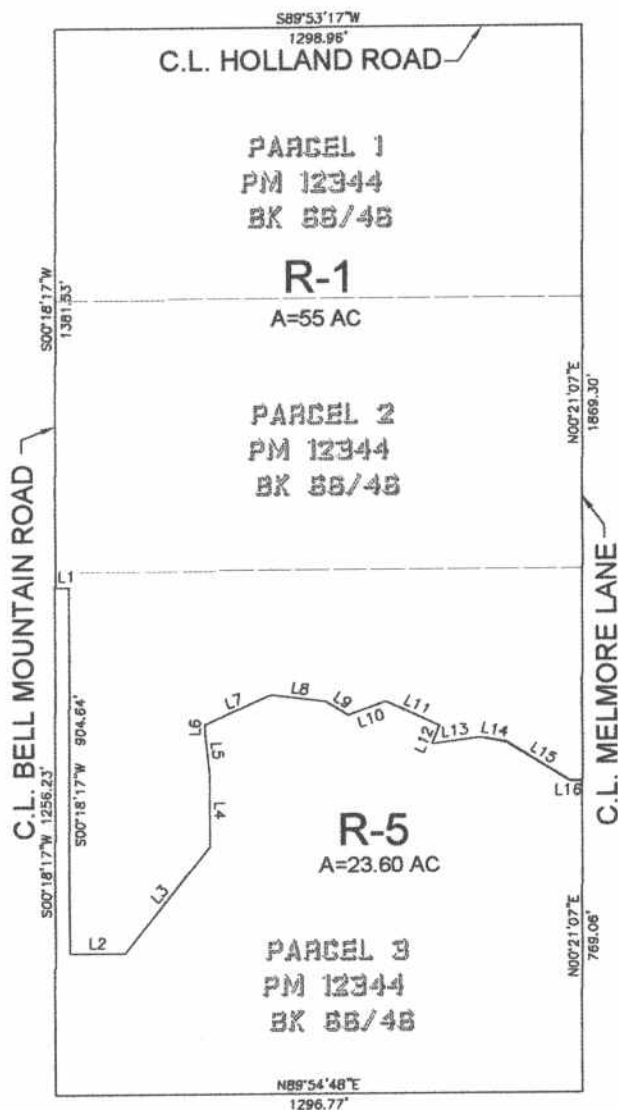
Dist. 3

AGENDA NO.

2.20



# WINCHESTER AREA SEC 12, T. 6S, R. 3W, S.B.M.



LINE	LENGTH	BEARING
L1	35.00'	N89°41'40"W
L2	136.68'	N89°57'14"E
L3	333.94'	N38°49'20"E
L4	162.70'	N00°02'46"W
L5	108.69'	N05°22'37"W
L6	11.17'	N00°18'53"E
L7	179.78'	S89°05'11"W
L8	137.02'	S82°48'45"E
L9	63.02'	N58°13'14"W
L10	98.38'	S70°13'45"W
L11	144.94'	S65°42'54"E
L12	49.74'	N22°40'27"E
L13	119.42'	S82°17'33"W
L14	66.80'	N79°10'47"W
L15	182.96'	N58°13'05"W
L16	30.00'	S89°38'53"E

### LEGEND:

- R-1 ONE-FAMILY DWELLINGS
- R-5 OPEN AREA COMBINING ZONE RESIDENTIAL DEVELOPMENT

MAP NO. 2.2059  
**CHANGE OF OFFICIAL ZONING PLAN  
 AMENDING  
 MAP NO. 2 ORDINANCE NO. 348**  
 CHANGE OF ZONE CASE NO. 6765  
 ADOPTED BY ORDINANCE NO. 348.4160  
 JANUARY 6, 2004

