

SUBMITTAL TO THE BOARD OF SUPERVISORS  
COUNTY OF RIVERSIDE, STATE OF CALIFORNIA

711 B



FROM: TLMA – Transportation Dept.

SUBMITTAL DATE:  
January 16, 2004

SUBJECT: Tract 23310

A Schedule "A" Subdivision in the Sedco-Wildomar Area  
**ONE YEAR GUARANTEE AND MAINTENANCE AGREEMENTS**

**RECOMMENDED MOTION:** That the Board approve the attached One Year Guarantee and Maintenance Agreements as approved by County Counsel and authorize the Chairman to sign these agreements for Tract 23310.

**BACKGROUND:** Improvements have been completed on this project. Ryland Homes desires to enter into Maintenance Agreements to guarantee a one year maintenance of the improvements and has submitted agreements and securities which have been approved by County Counsel.

Departmental Concurrence

REVIEWED BY EXECUTIVE OFFICE  
*[Signature]*  
DATE 1/6/04

*[Signature]*  
George A. Johnson  
Director of Transportation

HS:lf  
Submittals: Vicinity Map  
Road/Drainage Maint Agrmts  
Water System Maint Agrmts  
Sewer System Maint Agrmts

Consent  Policy   
Consent  Policy

Prev. Agn. Ref.: 08/15/00 - 2.9

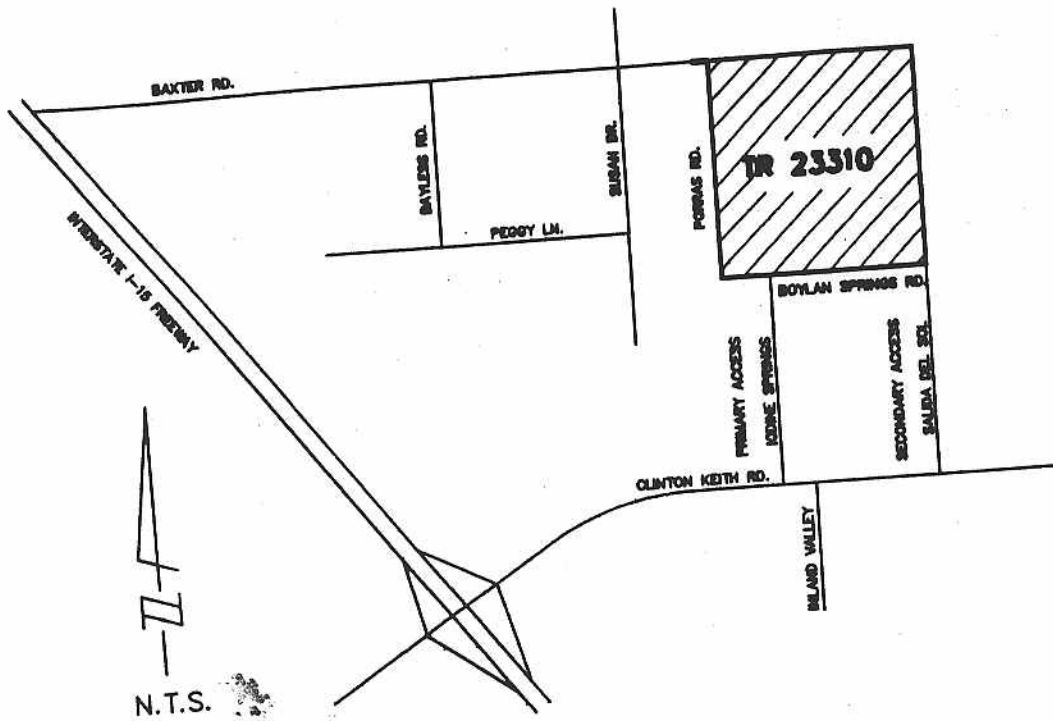
District: 1

Agenda Number:

ATTACHMENTS FILED  
WITH THE CLERK OF THE BOARD

2.3






# STRIPING PLAN



3. ALL STRIPES, REFLECTORIZED, FEDERAL METAL DETAILS SHALL BE WITH
4. ALL CONFLICT POINTS TO BE REMOVED BY PAVEMENT RECONSTRUCTION SHALL BE
5. PAINTED THERMOPLASTIC SHALL BE USED FOR ALL THERMOPLASTIC
6. ALL REMOVED STRIPES SHALL BE AS DIRECTED
7. THE COUNTY SHALL SIGN AND MAINTAIN WITH ALL RESERVES
8. RAISED FENCE SHALL BE INSTALLED IN ACCORDANCE WITH PLAN. IN STRIPING "EXPRESS"

# TRACT STRIPING

## LEGEND

-  SIGN
-  STRIPING
-  EDGE OF PAVEMENT (EP)
-  BARRICADE
-  2:1 SLOPE