

SUBMITTAL TO THE BOARD OF SUPERVISORS
COUNTY OF RIVERSIDE, STATE OF CALIFORNIA

827B



FROM: TLMA – Transportation Dept.

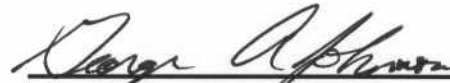
SUBMITTAL DATE:
January 16, 2004

SUBJECT: Tracts 28621, 28622, 28623, 28624, 28641, 28642, 28643, 28644 - Cedar Creek Road (Backbone Road Improvements)
Schedule "A" Subdivisions in the Eastvale Area
ONE YEAR GUARANTEE AND MAINTENANCE AGREEMENTS

RECOMMENDED MOTION: That the Board approve the attached One Year Guarantee and Maintenance Agreements as approved by County Counsel and authorize the Chairman to sign these agreements for Tracts 28621, 28622, 28623, 28624, 28641, 28642, 28643, 28644 - Cedar Creek Road (Backbone Road Improvements).

BACKGROUND: The backbone road improvements have been completed. Stratham Homes desires to enter into Maintenance Agreements to guarantee a one year maintenance of the improvements and has submitted agreements and securities which have been approved by County Counsel.

HS:lf
Submittals: Vicinity Map
Road/Drainage Maint Agrmts
Water System Maint Agrmts
Sewer System Maint Agrmts


George A. Johnson
Director of Transportation

REVIEWED BY EXECUTIVE OFFICE
Samuel S. Safford
DATE 1/29/04

Departmental Concurrence

Dep't Recomm.: Consent Policy
Per Exec. Ofc.: Consent Policy

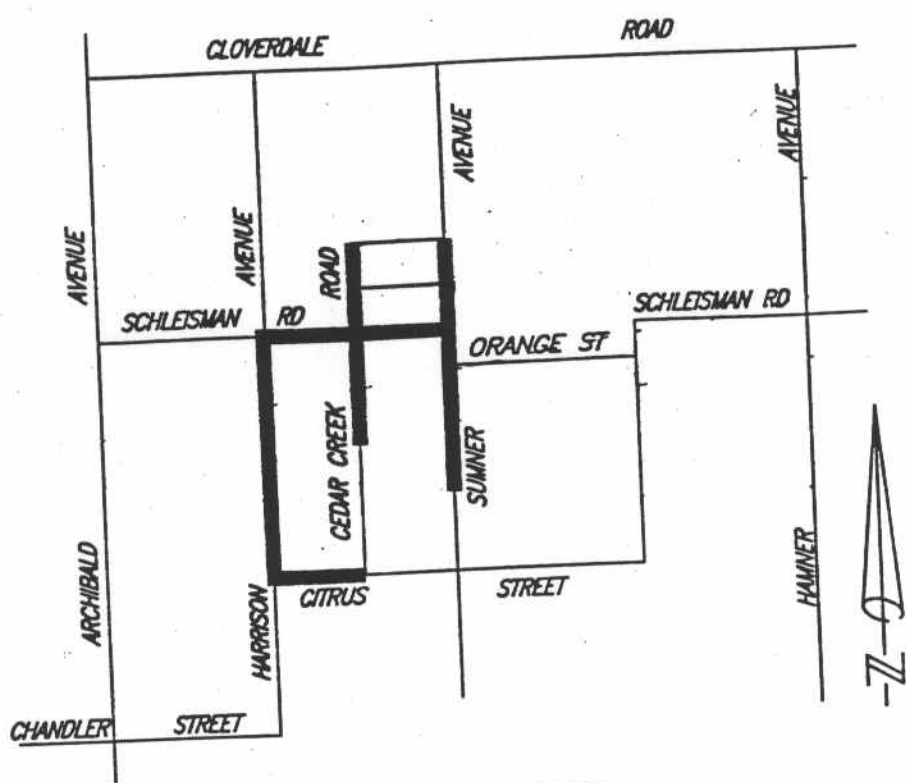
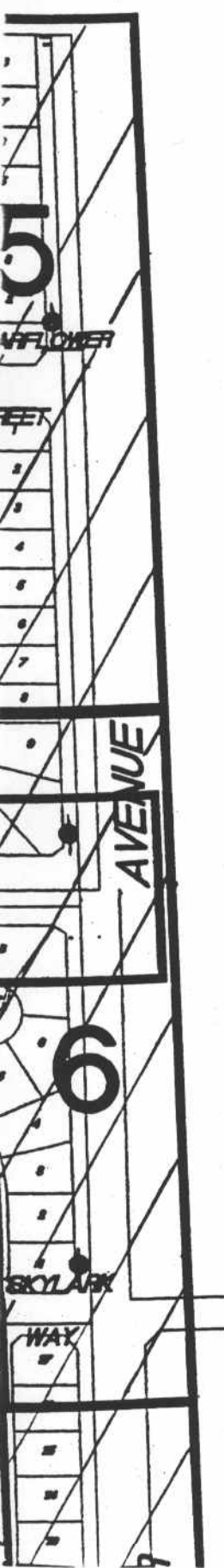
Prev. Agn. Ref.: 04/09/02 - 2.5 | District: 2 | Agenda Number:

ATTACHMENTS FILED
WITH THE CLERK OF THE BOARD

2.15

14 OFFSITE

0010



VICINITY MAP
N.T.S.

LEGEND

- T TEE
- + CROSS
- └ 90° ELBOW
- ┘ 45° ELBOW
- REDUCER
- ⊗ RESILIENT SEAT GATE VALVE (G.V.)
- ⊘ BUTTERFLY VALVE (B.F.V.)
- ⊗● STANDARD FIRE HYDRANT PER J.C.S.D. STD. NO. G-1
- ⊘● "SUPER" FIRE HYDRANT PER J.C.S.D. STD. NO. G-1A
- ⌋ CAP
- ⌌ PLUG
- 3/4" WATER SERVICE
- BLOW OFF PER STANDARD INDICATED.
- AIR VALVE PER STANDARD INDICATED.
- G — EXISTING GAS PIPELINE
- E — EXISTING UNDERGROUND ELECTRIC CABLE
- W — EXISTING WATERLINE
- S — EXISTING SEWERLINE
- T — EXISTING UNDERGROUND TELEPHONE CABLE
- SD — EXISTING UNDERGROUND STORM DRAIN PIPE
- — EXISTING UNDERGROUND TRAFFIC SIGNAL CABLE