

SUBMITTAL TO THE BOARD OF SUPERVISORS
COUNTY OF RIVERSIDE, STATE OF CALIFORNIA



FROM: County Counsel
SUBJECT: Ordinance No. 348.4164

SUBMITTAL DATE: February 3, 2004

RECOMMENDED MOTION: That the Board of Supervisors adopt Ordinance No. 348.4164 amending the zoning in the Bermuda Dunes District shown on Map No. 30.080 Change of Zone Case No. 6516.

BACKGROUND: Change of Zone Case No. 6516 was approved by the Board of Supervisors on December 19, 2000.

Katherine A. Lind
KATHERINE A. LIND
Deputy County Counsel

C.E.O. RECOMMENDATION:

APPROVE

County Executive Office Signature

Sally A. Beaman

Policy
 Policy

Consent
 Consent

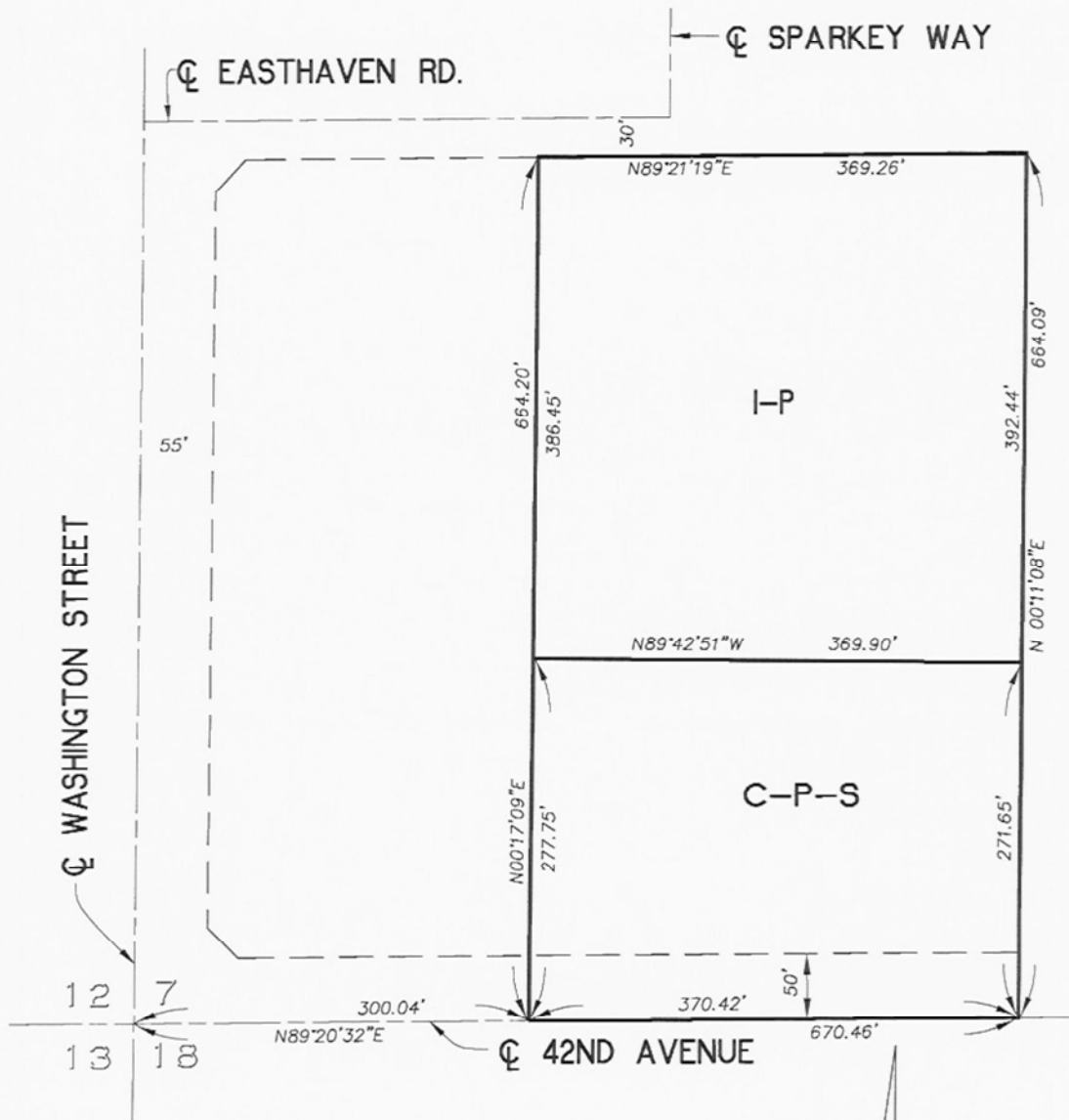
Department Recommendation:
Per Executive Office:

Prev. Agn. ref.

Dist. 4

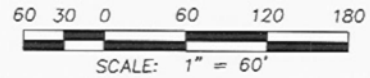
AGENDA NO.

SECTION 7, T.5S., R.7E., S.B.B. & M.



LEGEND

- C-P-S SCENIC HIGHWAY COMMERCIAL
- I-P INDUSTRIAL PARK



MAP NO. 30.080
CHANGE OF OFFICIAL ZONING PLAN
BERMUDA DUNES
DISTRICT

CHANGE OF ZONE CASE NO. 6516
AMENDING ORDINANCE NO. 348
ADOPTED BY ORDINANCE NO. 348.4164
FEBRUARY 24, 2004

RIVERSIDE COUNTY BOARD OF SUPERVISORS