

**SUBMITTAL TO THE BOARD OF SUPERVISORS
COUNTY OF RIVERSIDE, STATE OF CALIFORNIA**

3093



FROM: TLMA – Transportation Dept.

SUBMITTAL DATE:
February 23, 2004

SUBJECT: Approval of **TRACT 30448**
A Schedule "A" Subdivision in the Temecula Area

RECOMMENDED MOTION: That the Board approve the Improvement Agreements and Securities as approved by County Counsel, approve the final map and authorize the Chairman to sign the Improvement Agreements and map for Tract 30448.

BACKGROUND: This map complies in all respects with the provisions of Division 3 of Title 15 of the Government Code and applicable local ordinances. The developer desires to enter into Improvement Agreements to guarantee the construction of the required improvements and has submitted Improvement Agreements and Securities which have been approved by County Counsel.

REVIEWED BY EXECUTIVE OFFICE
DATE 2/23/04
Concurrence

HS:lf

Submittals: Final Map

- Road/Drainage Imp Agrmts (Onsite)
- Water System Imp Agrmts (Onsite)
- Sewer System Imp Agrmts (Onsite)
- Survey Monument Agrmts (Onsite)
- Road/Drainage Imp Agrmts (Offsite)
- Water System Imp Agrmts (Offsite)
- Sewer System Imp Agrmts (Offsite)

George A. Johnson
Director of Transportation

- Consent
- Policy
- Consent
- Policy

Dep't Recomm.:
Per Exec. Ofc.:

Prev. Agn. Ref.:

District: 3

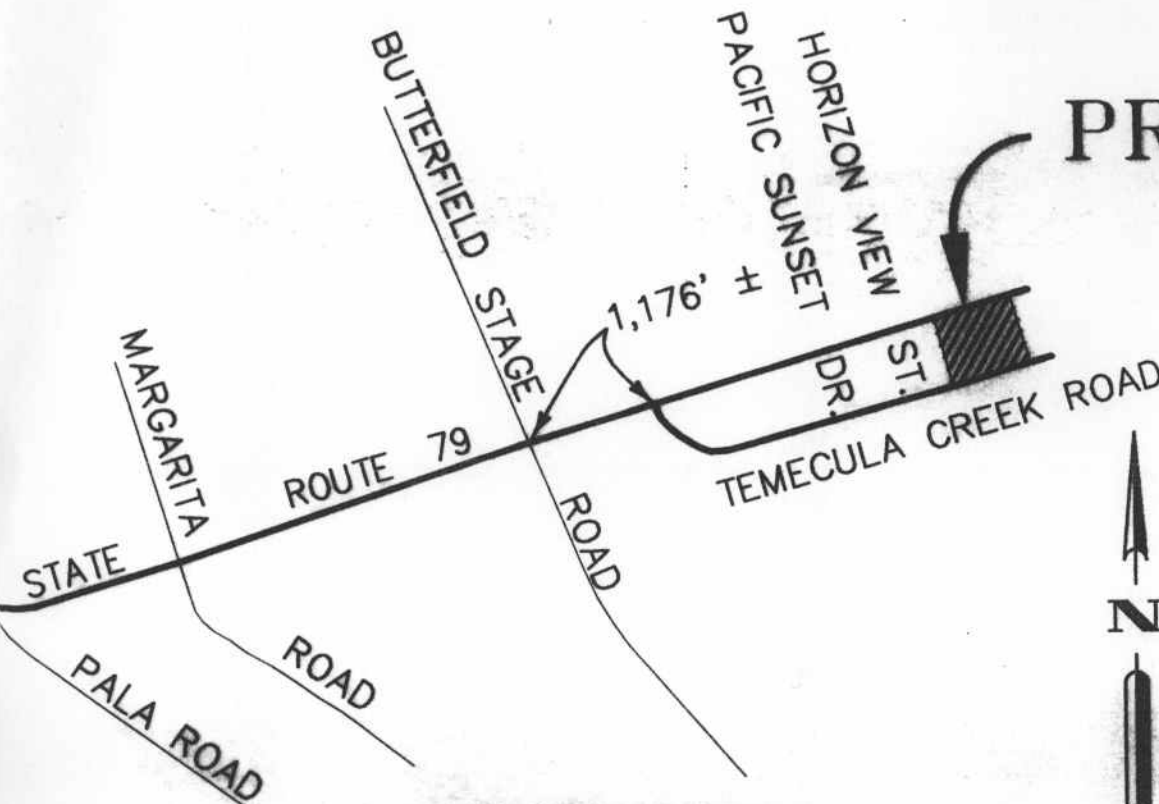
Agenda Number:

ATTACHMENTS FILED

WITH THE CLERK OF THE BOARD

2.12

PROJECT S



VICINITY MAP

SEC 10,11, 14 & 15 OF T.8S, R.2W

MENTAL CONTROL NOTE:

ITAL CONSTRAINT SHEET AFFECTING THIS MAP
 IN THE COUNTY OF RIVERSIDE TRANSPORTATION
 - SURVEY DIVISION, IN E.C.S. BOOK 34, PAGE 96.
 S ALL LOTS .

R'S NOTES

THE BASIS OF BEARINGS FOR THIS MAP IS THE SOUTHERLY