

SUBMITTAL TO THE BOARD OF SUPERVISORS
COUNTY OF RIVERSIDE, STATE OF CALIFORNIA



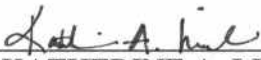
FROM: County Counsel

SUBMITTAL DATE: February 11, 2004

SUBJECT: Ordinance No. 348.4174

RECOMMENDED MOTION: That the Board of Supervisors adopt Ordinance No. 348.4174 amending the zoning in the French Valley Area shown on Map No. 2.2064 Change of Zone Case No. 6735.

BACKGROUND: Change of Zone Case No. 6735 was approved by the Board of Supervisors on January 13, 2004.


KATHERINE A. LIND
Deputy County Counsel

C.E.O. RECOMMENDATION:

APPROVE

County Executive Office Signature



Policy
 Policy

Consent
 Consent

Department Recommendation:
Per Executive Office:

Prev. Agn. ref.

Dist. 3

AGENDA NO.

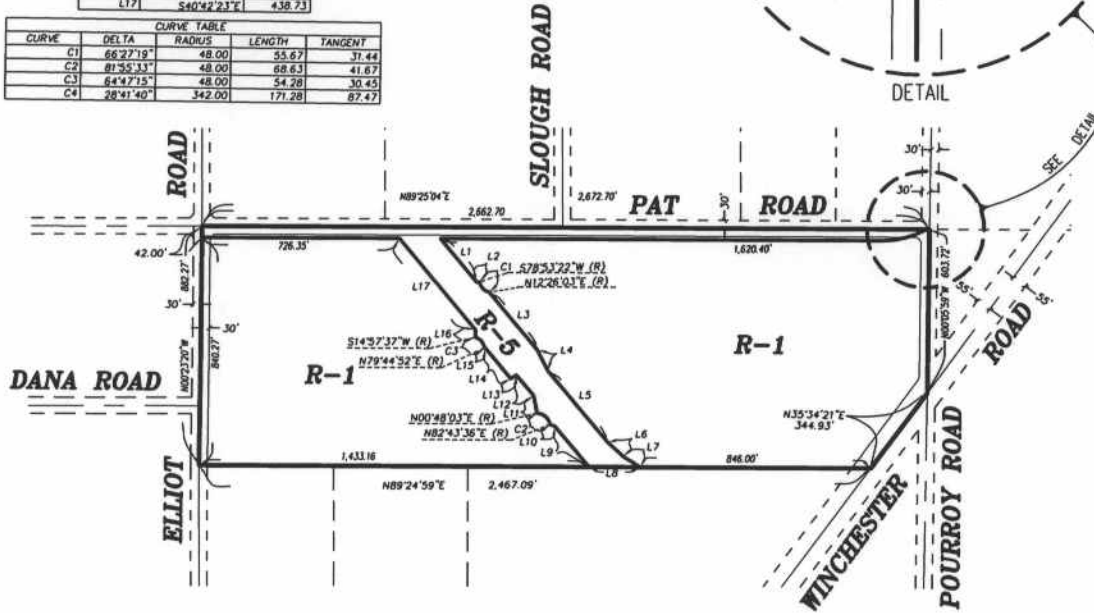
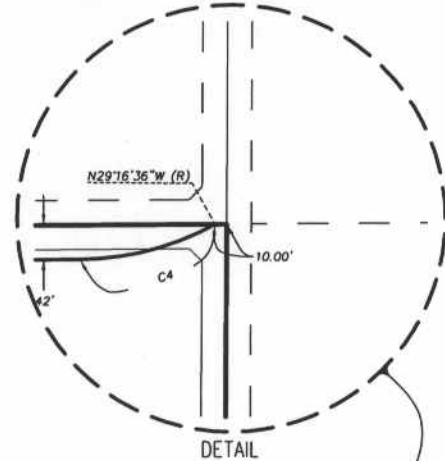
2.18

RECEIVED BY RIVERSIDE COUNTY
MAY 11 2004 10:53 AM

FRENCH VALLEY AREA
 POR. SEC. 2 , T.6 S., R.3 W. S.B.B. & M

LINE	BEARING	LENGTH
L1	N40°42'23"W	210.13
L2	S78°10'05"W	9.29
L3	N40°42'23"W	277.73
L4	N72°20'59"W	66.52
L5	N40°42'23"W	344.64
L6	N48°25'47"W	75.70
L7	N58°31'50"W	74.27
L8	N89°24'59"E	187.93
L9	S40°42'23"E	195.16
L10	S71°24'59"E	19.61
L11	S12°45'59"E	65.00
L12	S40°42'23"E	99.00
L13	N57°15'59"E	24.14
L14	S40°42'23"E	147.74
L15	S89°49'07"W	2.78
L16	S00°34'31"E	28.57
L17	S40°42'23"E	438.73

CURVE	DELTA	RADIUS	LENGTH	TANGENT
C1	68°27'19"	48.00	55.67	31.44
C2	81°52'13"	48.00	68.63	41.67
C3	64°47'15"	48.00	54.28	30.45
C4	28°41'40"	342.00	171.28	87.47



LEGEND:

R-1 One-Family Dwellings

R-5 Open Area Combining Zone – Residential Developments

MAP NO. 2.2064

CHANGE OF OFFICIAL ZONING PLAN

AMENDING

MAP NO. 2 ORDINANCE NO. 348

CHANGE OF ZONE CASE NO. 6735

ADOPTED BY ORDINANCE NO. 348.4174

MARCH 2, 2004

RIVERSIDE COUNTY BOARD OF SUPERVISORS

Portfile: R/28/04 083645 - S:\projects\1147-s\winchester\04m.dwg