

**SUBMITTAL TO THE BOARD OF DIRECTORS OF THE
REDEVELOPMENT AGENCY
COUNTY OF RIVERSIDE, STATE OF CALIFORNIA**

516
C



FROM: Redevelopment Agency

SUBMITTAL DATE:
February 26, 2004

SUBJECT: Covenant and Agreement for Acceptance of Drainage Waters and Maintenance of Drainage Facilities for Etiwanda Avenue Improvement Project.

RECOMMENDED MOTION: That the Board of Directors:

1. Approve the Covenant and Agreement for Acceptance of Drainage Waters and Maintenance of Drainage Facilities for Assessor Parcel Number 159-141-004, and
2. Authorize and direct the Executive Director, or his designee, to take the necessary actions and execute any related documents to complete this transaction, and
3. Request authorization from the Board of Supervisors for the approval of any subsequent covenants, agreements, and/or easements needed for this project to be approved and executed by the Assistant County Executive Director/EDA, upon approval as to form by County Counsel.

BACKGROUND: On February 25, 2003, the Board of Supervisors and the Board of Directors approved the plans and specifications for the Etiwanda Avenue Storm Drain and Street Improvement Project as well as approved an estimated construction budget.

The construction of these proposed street improvements proposes to improve the current storm and nuisance flows that currently cross several parcels adjacent to Etiwanda Avenue. In addition to

Bradley J. Hudson

Bradley J. Hudson, Executive Director

BJH:RZ:DML:AMV:REW:sj
F:\Shared\RealProperty\Real Property\DIST\04-2-109.frm11.doc

FINANCIAL DATA	Current F.Y. Total Cost:	\$0	In Current Year Budget:	N/A
	Current F.Y. Net County Cost:	\$0	Budget Adjustment:	No
	Annual Net County Cost:	\$0	For Fiscal Year:	03/04

COMPANION ITEM ON BOARD OF SUPERVISORS AGENDA: Yes

SOURCE OF FUNDS: N/A

Positions To Be Deleted Per A-30	<input type="checkbox"/>
Requires 4/5 Vote	<input type="checkbox"/>

C.E.O. RECOMMENDATION: **APPROVE**

County Executive Office Signature *Bronda King*

- Policy
- Consent
- Policy
- Consent

Prev. Agn. Ref.: #4.1, of 2/25/03
#3.21 of 4/30/02 | **District:** 2 | **Agenda Number:**

BACKGROUND (continued)

these storm water runoff facilities, the project calls for sidewalk and curb and gutter construction. These additional improvements will help eliminate much of the unsightly truck and automobile parking conditions along Etiwanda Avenue.

The construction of these facilities requires that eight (8) property owners agree and accept drainage flows across their properties. The Agency has received three (3) of these eight (8) agreements required to complete the project. Staff recommends the approval of the attached "Covenant and Agreement for Acceptance of Drainage Waters and Maintenance of Drainage Facilities" for APN 159-141-004.

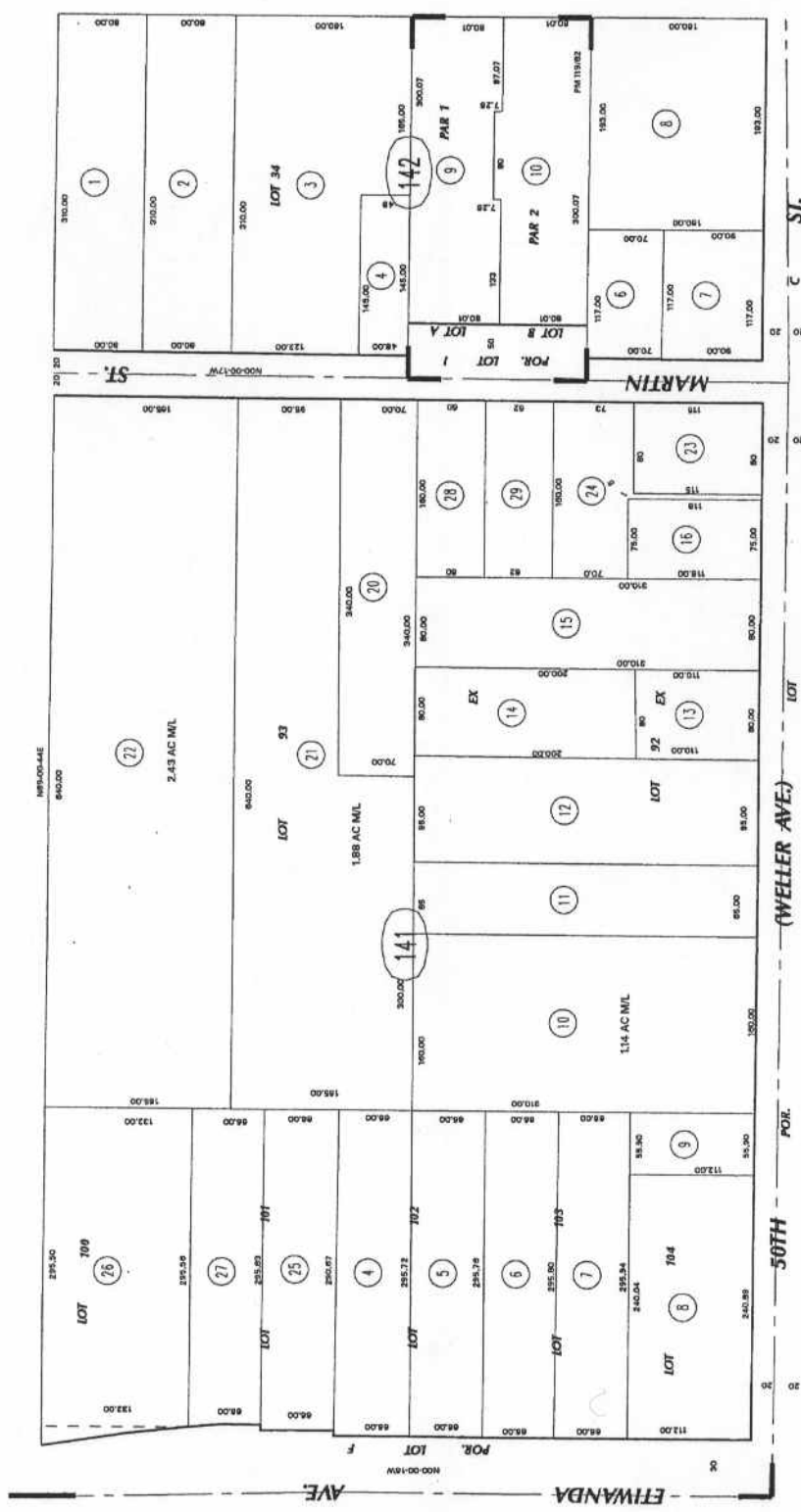
On a companion item on today's agenda, the Agency is also requesting that the Board of Supervisors authorize the approval and acceptance of any other such covenants, agreements, and/or easements to be signed by the Assistant County Executive Director/EDA of the Agency, once signed by the appropriate property owners and approved as to form by County Counsel.

THIS MAP WAS PREPARED FOR ASSESSMENT PURPOSES ONLY. NO LIABILITY IS ASSUMED FOR THE ACCURACY OF THE DATA SHOWN. ASSESSOR'S PARCEL MAP MAY NOT COMPLY WITH LOCAL LOT-SPLIT OR BUILDING SITE ORDINANCES.

SEC. 16 T. 2S., R. 6W

T.R.A. 089-095

159-14
7-38



MAY 03 2002

DATE	OLD NUMBER	NEW NUMBER
2/1/02	17-18	31-32
2/1/02	14-15	28-29
2/1/02	16-17	30-31
2/1/02	18-19	32-33
2/1/02	20-21	34-35
2/1/02	22-23	36-37
2/1/02	24-25	38-39
2/1/02	26-27	40-41
2/1/02	28-29	42-43
2/1/02	30-31	44-45
2/1/02	32-33	46-47
2/1/02	34-35	48-49
2/1/02	36-37	50-51
2/1/02	38-39	52-53
2/1/02	40-41	54-55
2/1/02	42-43	56-57
2/1/02	44-45	58-59
2/1/02	46-47	60-61
2/1/02	48-49	62-63
2/1/02	50-51	64-65
2/1/02	52-53	66-67
2/1/02	54-55	68-69
2/1/02	56-57	70-71
2/1/02	58-59	72-73
2/1/02	60-61	74-75
2/1/02	62-63	76-77
2/1/02	64-65	78-79
2/1/02	66-67	80-81
2/1/02	68-69	82-83
2/1/02	70-71	84-85
2/1/02	72-73	86-87
2/1/02	74-75	88-89
2/1/02	76-77	90-91
2/1/02	78-79	92-93
2/1/02	80-81	94-95
2/1/02	82-83	96-97
2/1/02	84-85	98-99
2/1/02	86-87	100-101
2/1/02	88-89	102-103
2/1/02	90-91	104-105
2/1/02	92-93	106-107
2/1/02	94-95	108-109
2/1/02	96-97	110-111
2/1/02	98-99	112-113
2/1/02	100-101	114-115
2/1/02	102-103	116-117
2/1/02	104-105	118-119
2/1/02	106-107	120-121
2/1/02	108-109	122-123
2/1/02	110-111	124-125
2/1/02	112-113	126-127
2/1/02	114-115	128-129
2/1/02	116-117	130-131
2/1/02	118-119	132-133
2/1/02	120-121	134-135
2/1/02	122-123	136-137
2/1/02	124-125	138-139
2/1/02	126-127	140-141
2/1/02	128-129	142-143
2/1/02	130-131	144-145
2/1/02	132-133	146-147
2/1/02	134-135	148-149
2/1/02	136-137	150-151
2/1/02	138-139	152-153
2/1/02	140-141	154-155
2/1/02	142-143	156-157
2/1/02	144-145	158-159
2/1/02	146-147	160-161
2/1/02	148-149	162-163
2/1/02	150-151	164-165
2/1/02	152-153	166-167
2/1/02	154-155	168-169
2/1/02	156-157	170-171
2/1/02	158-159	172-173
2/1/02	160-161	174-175
2/1/02	162-163	176-177
2/1/02	164-165	178-179
2/1/02	166-167	180-181
2/1/02	168-169	182-183
2/1/02	170-171	184-185
2/1/02	172-173	186-187
2/1/02	174-175	188-189
2/1/02	176-177	190-191
2/1/02	178-179	192-193
2/1/02	180-181	194-195
2/1/02	182-183	196-197
2/1/02	184-185	198-199
2/1/02	186-187	200-201
2/1/02	188-189	202-203
2/1/02	190-191	204-205
2/1/02	192-193	206-207
2/1/02	194-195	208-209
2/1/02	196-197	210-211
2/1/02	198-199	212-213
2/1/02	200-201	214-215
2/1/02	202-203	216-217
2/1/02	204-205	218-219
2/1/02	206-207	220-221
2/1/02	208-209	222-223
2/1/02	210-211	224-225
2/1/02	212-213	226-227
2/1/02	214-215	228-229
2/1/02	216-217	230-231
2/1/02	218-219	232-233
2/1/02	220-221	234-235
2/1/02	222-223	236-237
2/1/02	224-225	238-239
2/1/02	226-227	240-241
2/1/02	228-229	242-243
2/1/02	230-231	244-245
2/1/02	232-233	246-247
2/1/02	234-235	248-249
2/1/02	236-237	250-251
2/1/02	238-239	252-253
2/1/02	240-241	254-255
2/1/02	242-243	256-257
2/1/02	244-245	258-259
2/1/02	246-247	260-261
2/1/02	248-249	262-263
2/1/02	250-251	264-265
2/1/02	252-253	266-267
2/1/02	254-255	268-269
2/1/02	256-257	270-271
2/1/02	258-259	272-273
2/1/02	260-261	274-275
2/1/02	262-263	276-277
2/1/02	264-265	278-279
2/1/02	266-267	280-281
2/1/02	268-269	282-283
2/1/02	270-271	284-285
2/1/02	272-273	286-287
2/1/02	274-275	288-289
2/1/02	276-277	290-291
2/1/02	278-279	292-293
2/1/02	280-281	294-295
2/1/02	282-283	296-297
2/1/02	284-285	298-299
2/1/02	286-287	300-301
2/1/02	288-289	302-303
2/1/02	290-291	304-305
2/1/02	292-293	306-307
2/1/02	294-295	308-309
2/1/02	296-297	310-311
2/1/02	298-299	312-313
2/1/02	300-301	314-315
2/1/02	302-303	316-317
2/1/02	304-305	318-319
2/1/02	306-307	320-321
2/1/02	308-309	322-323
2/1/02	310-311	324-325
2/1/02	312-313	326-327
2/1/02	314-315	328-329
2/1/02	316-317	330-331
2/1/02	318-319	332-333
2/1/02	320-321	334-335
2/1/02	322-323	336-337
2/1/02	324-325	338-339
2/1/02	326-327	340-341
2/1/02	328-329	342-343
2/1/02	330-331	344-345
2/1/02	332-333	346-347
2/1/02	334-335	348-349
2/1/02	336-337	350-351
2/1/02	338-339	352-353
2/1/02	340-341	354-355
2/1/02	342-343	356-357
2/1/02	344-345	358-359
2/1/02	346-347	360-361
2/1/02	348-349	362-363
2/1/02	350-351	364-365
2/1/02	352-353	366-367
2/1/02	354-355	368-369
2/1/02	356-357	370-371
2/1/02	358-359	372-373
2/1/02	360-361	374-375
2/1/02	362-363	376-377
2/1/02	364-365	378-379
2/1/02	366-367	380-381
2/1/02	368-369	382-383
2/1/02	370-371	384-385
2/1/02	372-373	386-387
2/1/02	374-375	388-389
2/1/02	376-377	390-391
2/1/02	378-379	392-393
2/1/02	380-381	394-395
2/1/02	382-383	396-397
2/1/02	384-385	398-399
2/1/02	386-387	400-401
2/1/02	388-389	402-403
2/1/02	390-391	404-405
2/1/02	392-393	406-407
2/1/02	394-395	408-409
2/1/02	396-397	410-411
2/1/02	398-399	412-413
2/1/02	400-401	414-415
2/1/02	402-403	416-417
2/1/02	404-405	418-419
2/1/02	406-407	420-421
2/1/02	408-409	422-423
2/1/02	410-411	424-425
2/1/02	412-413	426-427
2/1/02	414-415	428-429
2/1/02	416-417	430-431
2/1/02	418-419	432-433
2/1/02	420-421	434-435
2/1/02	422-423	436-437
2/1/02	424-425	438-439
2/1/02	426-427	440-441
2/1/02	428-429	442-443
2/1/02	430-431	444-445
2/1/02	432-433	446-447
2/1/02	434-435	448-449
2/1/02	436-437	450-451
2/1/02	438-439	452-453
2/1/02	440-441	454-455
2/1/02	442-443	456-457
2/1/02	444-445	458-459
2/1/02	446-447	460-461
2/1/02	448-449	462-463
2/1/02	450-451	464-465
2/1/02	452-453	466-467
2/1/02	454-455	468-469
2/1/02	456-457	470-471
2/1/02	458-459	472-473
2/1/02	460-461	474-475
2/1/02	462-463	476-477
2/1/02	464-465	478-479
2/1/02	466-467	480-481
2/1/02	468-469	482-483
2/1/02	470-471	484-485
2/1/02	472-473	486-487
2/1/02	474-475	488-489
2/1/02	476-477	490-491
2/1/02	478-479	492-493
2/1/02	480-481	494-495
2/1/02	482-483	496-497
2/1/02	484-485	498-499
2/1/02	486-487	500-501
2/1/02	488-489	502-503
2/1/02	490-491	504-505
2/1/02	492-493	506-507
2/1/02	494-495	508-509
2/1/02	496-497	510-511
2/1/02	498-499	512-513
2/1/02	500-501	514-515
2/1/02	502-503	516-517
2/1/02	504-505	518-519
2/1/02	506-507	520-521
2/1/02	508-509	522-523
2/1/02	510-511	524-525
2/1/02	512-513	526-527
2/1/02	514-515	528-529
2/1/02	516-517	530-531
2/1/02	518-519	532-533
2/1/02	520-521	534-535
2/1/02	522-523	536-537
2/1/02	524-525	538-539
2/1/02	526-527	540-541
2/1/02	528-529	542-543
2/1/02	530-531	544-545
2/1/02	532-533	546-547
2/1/02	534-535	548-549
2/1/02	536-537	550-551
2/1/02	538-539	552-553
2/1/02	540-541	554-555
2/1/02		