

SUBMITTAL TO THE BOARD OF SUPERVISORS  
COUNTY OF RIVERSIDE, STATE OF CALIFORNIA



FROM: County Counsel

SUBMITTAL DATE: April 27, 2004

SUBJECT: Ordinance No. 348.4184

**RECOMMENDED MOTION:** That the Board of Supervisors adopt Ordinance No. 348.4184 amending the zoning in the Lake Mathews District shown on Map No. 36.049 Change of Zone Case No. 6632.

**BACKGROUND:** Change of Zone Case No. 6632 was approved by the Board of Supervisors on July 22, 2003.

*Katherine A. Lind*  
KATHERINE A. LIND  
Deputy County Counsel

C.E.O. RECOMMENDATION:

**APPROVE**

*Lisa Brandl*

County Executive Office Signature

Policy  
 Policy

Consent  
 Consent

Department Recommendation:  
Per Executive Office:

Prev. Agn. ref.

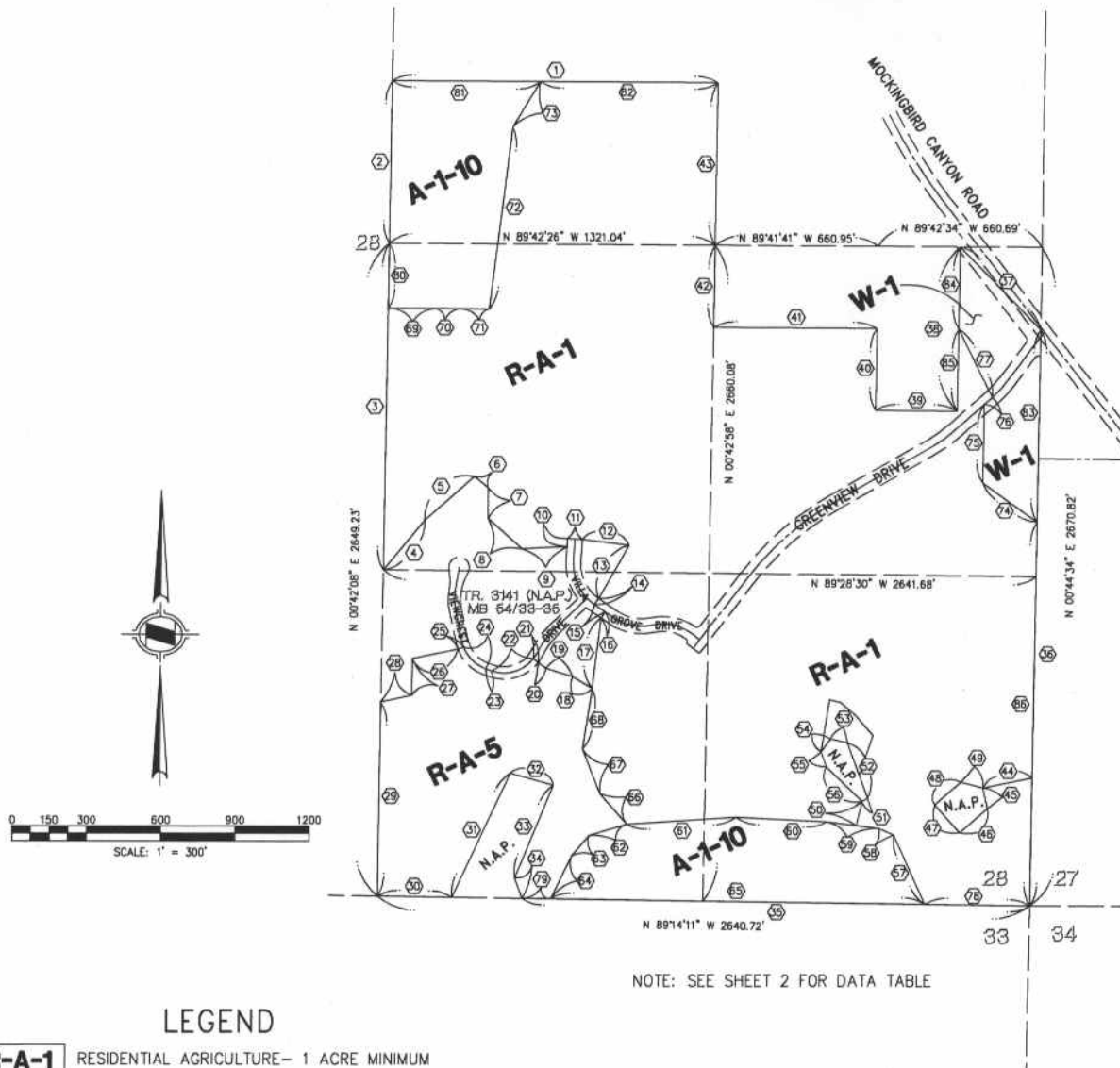
Dist. 1

AGENDA NO.

2.13



A PORTION OF SEC. 28, T.3.S., R.5.W., S.B.B.&M.



NOTE: SEE SHEET 2 FOR DATA TABLE

LEGEND

- R-A-1** RESIDENTIAL AGRICULTURE- 1 ACRE MINIMUM
- R-A-5** RESIDENTIAL AGRICULTURE- 5 ACRE MINIMUM
- A-1-10** LIGHT AGRICULTURE- 10 ACRE MINIMUM
- W-1** WATERCOURSE, WATERSHED & CONSERVATION AREAS

MAP NO. 36.049  
 CHANGE OF OFFICIAL ZONING PLAN  
 LAKE MATHEWS  
 DISTRICT

CHANGE OF ZONE CASE NO. CZ6632  
 AMENDING ORDINANCE NO. 348  
 ADOPTED BY ORDINANCE NO. 348.4184  
 APRIL 27, 2004  
 RIVERSIDE COUNTY BOARD OF SUPERVISORS

A PORTION OF SEC. 28, T.3.S., R.5.W., S.B.B.&M.

DATA TABLE

①	BEARING/Delta	RADIUS	LENGTH	TANGENT
①	N 89°42'34" W		1320.12'	
②	S 0°42'15" W		657.39'	
③	S 0°42'08" W		1324.82'	
④	S 39°36'53" W		260.13'	
⑤	S 48°27'26" W		268.04'	
⑥	N 51°01'22" W		73.40'	
⑦	N 0°01'40" W		123.85'	
⑧	N 48°33'38" W		185.02'	
⑨	S 87°20'37" W		181.85'	
⑩	N 3°21'27" E		34.09'	
⑪	S 86°38'33" E		60.00'	
⑫	S 82°58'10" E		190.63'	
⑬	S 29°14'27" W		248.00'	
⑭	S 34°32'23" W		30.00'	
⑮	S 55°27'37" E		52.25'	
⑯	S 34°32'23" W		30.00'	
⑰	S 6°24'37" W		288.41'	
⑱	N 59°18'32" W		93.73'	
⑲	N 72°49'56" W		113.26'	
⑳	N 52°16'33" W		39.23'	
㉑	N 52°25'33" W(R)		25.00'	
㉒	71°57'55"	150.00'	188.40'	108.91'
㉓	N 70°27'36" W		25.29'	
㉔	49°45'08"	150.00'	130.25'	69.55'
㉕	N 69°17'30" E(R)		25.00'	
㉖	S 78°20'05" W		187.92'	
㉗	S 0°41'24" W		149.11'	
㉘	S 77°10'40" W		128.64'	
㉙	S 0°42'08" W		786.52'	
㉚	S 89°14'11" E		302.79'	
㉛	N 24°54'38" E		555.10'	
㉜	S 74°25'39" E		181.16'	
㉝	S 22°16'33" W		405.59'	
㉞	S 19°06'40" E		88.14'	
㉟	S 89°14'11" E		2054.48'	
㊱	N 00°44'34" E		2336.97'	
㊲	N 44°10'33" W		467.83'	
㊳	S 0°43'54" W		667.22'	
㊴	S 89°35'19" E		330.46'	
㊵	N 0°43'13" E		333.29'	
㊶	S 89°38'21" E		660.74'	
㊷	S 0°43'44" W		332.57'	
㊸	S 0°37'28" W		657.43'	
㊹	N 78°45'27" E		203.50'	
㊺	N 11°43'46" W		86.23'	
㊻	N 48°19'02" E		147.25'	
㊼	S 41°42'24" E		151.26'	
㊽	S 48°17'18" W		139.60'	
㊾	N 75°12'35" W		91.91'	
㊿	N 13°05'03" E		101.55'	
1	S 60°04'01" W		24.96'	
2	S 20°03'59" E		239.83'	
3	N 76°51'32" W		70.02'	
4	N 35°26'29" E		64.60'	
5	N 19°22'09" W		63.16'	
6	N 45°47'09" W		202.81'	

7	S 24°36'53" E		307.71'	
8	S 66°48'38" E		65.71'	
9	S 82°42'23" E		211.19'	
10	S 87°03'56" E		367.24'	
11	N 86°10'39" E		442.70'	
12	S 73°39'44" W		158.85'	
13	S 40°20'07" W		108.17'	
14	S 25°44'02" W		193.61'	
15	N 89°14'11" W		1513.18'	
16	S 41°32'27" E		166.87'	
17	S 21°17'18" E		194.30'	
18	S 8°56'22" W		248.43'	
19	N 89°50'24" W		193.61'	
20	N 89°55'05" W		101.64'	
21	N 89°19'25" W		114.50'	
22	S 7°03'19" W		742.03'	
23	S 31°08'51" W		214.71'	
24	N 54°38'48" W		271.28'	
25	S 0°44'34" W		319.45'	
26	S 47°53'26" W		42.67'	
27	S 25°57'01" E		308.38'	
28	S 89°14'11" E		424.43'	
29	N 89°14'11" W		116.87'	
30	N 0°42'08" E		263.86'	
31	S 89°42'34" E		600.62'	
32	S 89°42'34" E		719.50'	
33	N 0°44'34" E		780.82'	
34	S 0°43'54" W		333.79'	
35	S 0°43'54" W		333.43'	
36	S 0°44'34" W		1556.15'	

MAP NO. 36.049  
CHANGE OF OFFICIAL ZONING PLAN  
LAKE MATHEWS  
DISTRICT

CHANGE OF ZONE CASE NO. CZ6632  
AMENDING ORDINANCE NO. 348  
ADOPTED BY ORDINANCE NO. 348.4184  
APRIL 27, 2004  
RIVERSIDE COUNTY BOARD OF SUPERVISORS