

SUBMITTAL TO THE BOARD OF SUPERVISORS  
COUNTY OF RIVERSIDE, STATE OF CALIFORNIA

314 B



FROM: TLMA – Transportation Dept.

SUBMITTAL DATE:  
April 26, 2004

SUBJECT: Approval of **TRACT 25285-1**  
A Schedule "A" Subdivision in the Menifee Area

**RECOMMENDED MOTION:** That the Board approve the Improvement Agreements and Securities as approved by County Counsel, approve the final map and authorize the Chairman to sign the Improvement Agreements and map for Tract 25285-1.

**BACKGROUND:** This map complies in all respects with the provisions of Division 3 of Title 15 of the Government Code and applicable local ordinances. The developer desires to enter into Improvement Agreements to guarantee the construction of the required improvements and has submitted Improvement Agreements and Securities which have been approved by County Counsel.

Departmental Concurrence

REVIEWED BY EXECUTIVE OFFICE  
*[Signature]*  
DATE 4/27/04

HS:lf  
Submittals: Final Map  
Road/Drainage Improvement Agrmts  
Water System Improvement Agrmts  
Sewer System Improvement Agrmts  
Survey Monument Agreements

*[Signature: Mark S. Bernas]*  
George A. Johnson  
Director of Transportation

Consent     Policy  
 Consent     Policy

Dept's Recomm.:  
Per Exec. Ofc.:

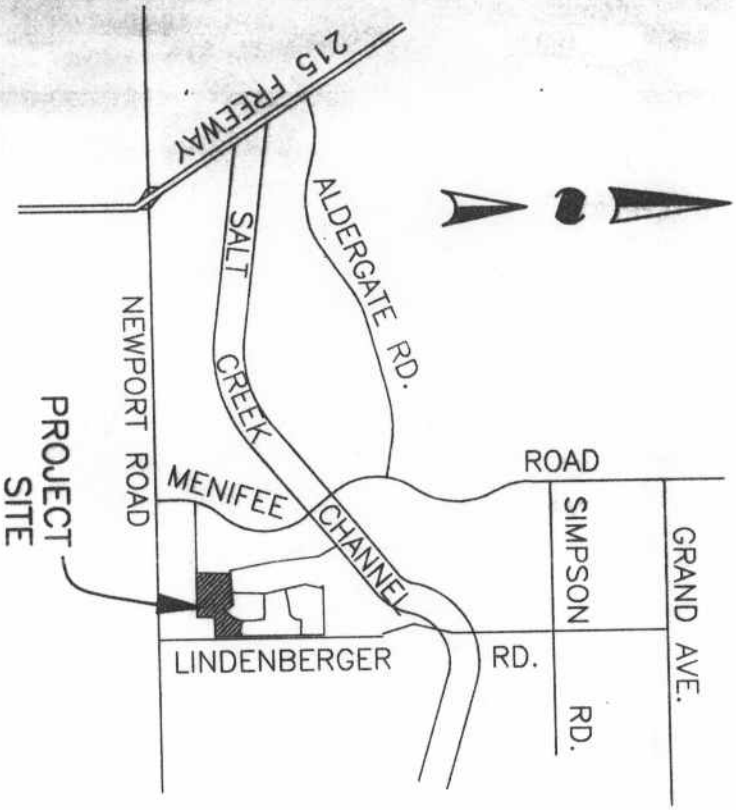
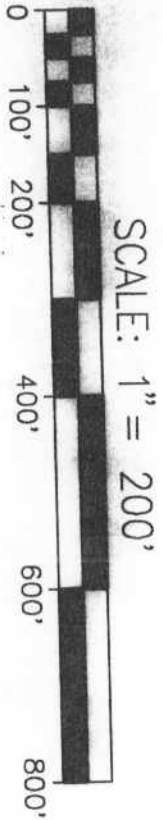
Prev. Agn. Ref.:

District: 3

Agenda Number:

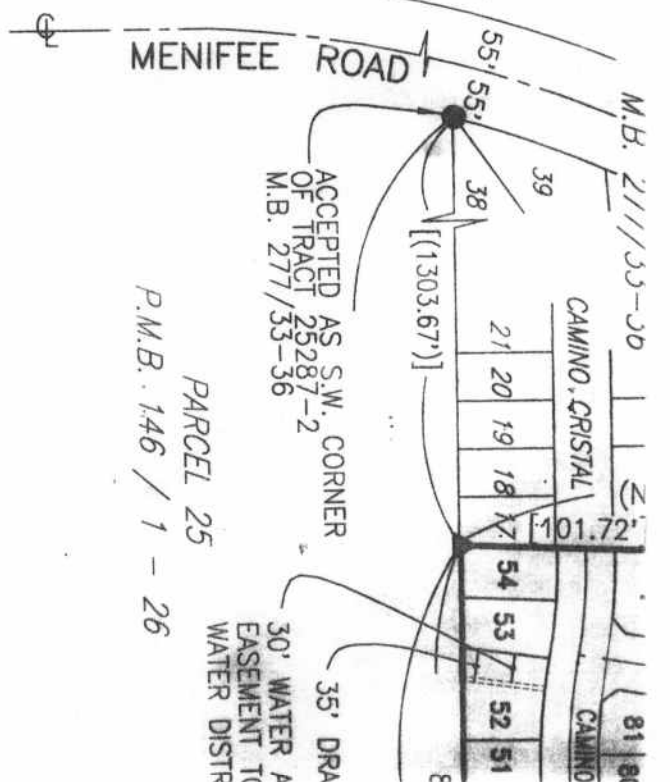
2.15

# C.C. & R'S PER INSTRUMENT # \_\_\_\_\_ RECORDED \_\_\_\_\_



## VICINITY MAP

NOT TO SCALE



CURVE DATA			
Δ	R	L	
1 2'59'.51"	345.00'	18.05'	
2 0'07'.33"	530.00'	1.16'	
3 6'28'.58"	265.00'	29.98'	