

SUBMITTAL TO THE BOARD OF SUPERVISORS
COUNTY OF RIVERSIDE, STATE OF CALIFORNIA

315B



FROM: TLMA – Transportation Dept.

SUBMITTAL DATE:
April 26, 2004

SUBJECT: Approval of **TRACT 25285-2 (Onsite and Offsite Improvements)**
A Schedule "A" Subdivision in the Menifee Area

RECOMMENDED MOTION: That the Board approve the Improvement Agreements and Securities as approved by County Counsel, approve the final map and authorize the Chairman to sign the Improvement Agreements and map for Tract 25285-2 (Onsite and Offsite Improvements).

BACKGROUND: This map complies in all respects with the provisions of Division 3 of Title 15 of the Government Code and applicable local ordinances. The developer desires to enter into Improvement Agreements to guarantee the construction of the required improvements and has submitted Improvement Agreements and Securities which have been approved by County Counsel.

REVIEWED BY EXECUTIVE OFFICE

James P. ...
DATE: 4/26/04

Departmental Concurrence

George A. Johnson
George A. Johnson
Director of Transportation

HS:lf

Submittals: Final Map

- Road/Drainage Improvement Agrmts (Onsite)
- Water System Improvement Agrmts (Onsite)
- Sewer System Improvement Agrmts (Onsite)
- Survey Monument Agreements (Onsite)
- Road/Drainage Improvement Agrmts (Offsite)
- Water System Improvement Agrmts (Offsite)
- Sewer System Improvement Agrmts (Offsite)
- Survey Monument Agreements (Offsite)

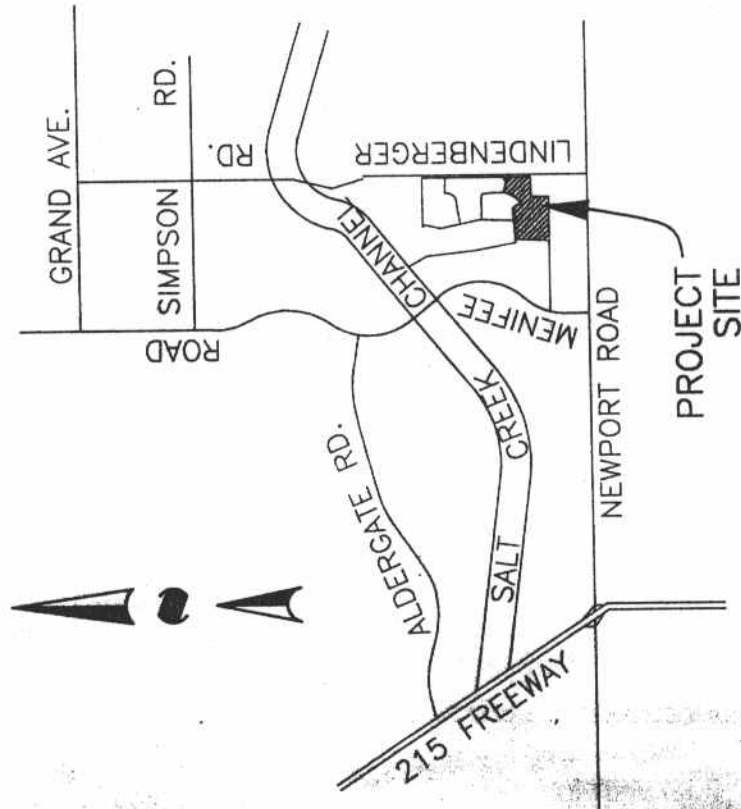
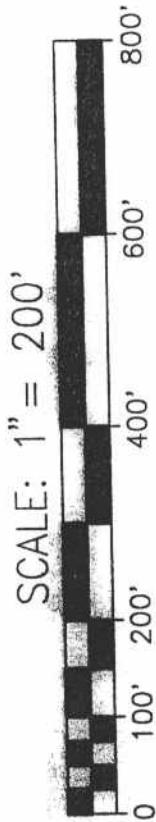
Consent
 Policy
 Consent
 Policy
 Dept't Recomm.:
 Per Exec. Ofc.:

Prev. Agn. Ref.:

District: 3

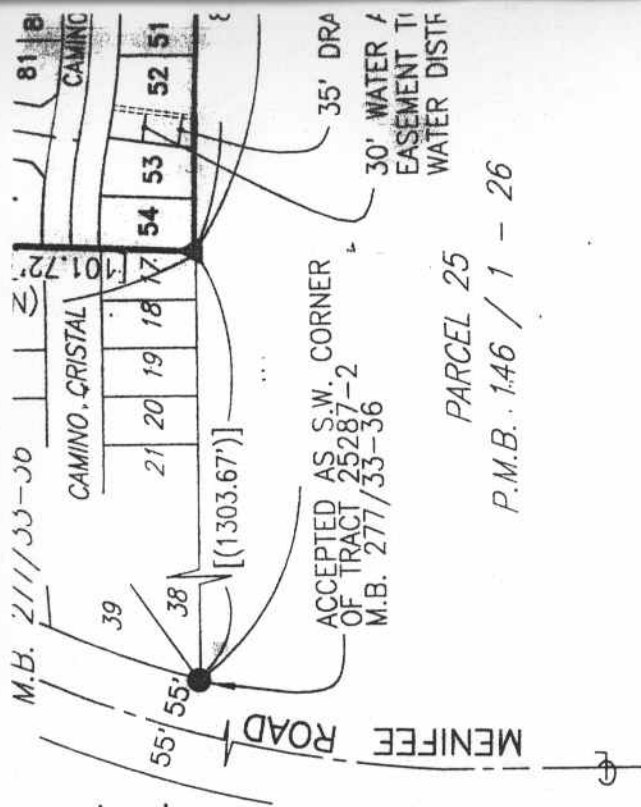
Agenda Number:

C.C. & R'S PER INSTRUMENT # _____
 RECORDED _____



VICINITY MAP

NOT TO SCALE



CURVE DATA

Δ	R	L	
1	2°59'51"	345.00'	18.05'
2	0°07'33"	530.00'	1.16'
3	6°28'58"	265.00'	29.98'