

**SUBMITTAL TO THE BOARD OF SUPERVISORS
COUNTY OF RIVERSIDE, STATE OF CALIFORNIA**

418



FROM: Economic Development Agency

SUBMITTAL DATE:
April 26, 2004

SUBJECT: Adoption of County Resolution No. 2004-191, Notice of Intent to Convey Surplus Real Property to the City of Indio.

RECOMMENDED MOTION: That the Board of Supervisors:

1. Adopt Resolution No. 2004-191, Notice of Intent to Convey Surplus Real Property to the City of Indio;
2. Authorize and direct the Clerk of the Board to give notice as required by Government Code Section 6061; and
3. Authorize and direct the Assistant County Executive Officer/EDA, or his designee, to take the necessary actions to complete this transaction.

BACKGROUND: The subject County property was formerly operated as a medical clinic, and the most recent lessee has vacated the site. The site is not conveniently located to serve as a satellite County facility; and is therefore, surplus to the County's needs. The City of Indio has expressed willingness to accept the property (which is within City limits) for City purposes, and staff recommends that the property be conveyed to the City of Indio. This conveyance will release the County from any further liability or responsibility as a result of the ownership of the site.

Bradley J. Hudson

Bradley J. Hudson, Assistant County Executive Officer/EDA

BJH:RZ:BJG:AMV:sj
F:\Shared\RealProperty\Real Property\DIST4\04-4-009.frm11.doc

FINANCIAL DATA	Current F.Y. Total Cost:	\$ -0-	In Current Year Budget:	N/A
	Current F.Y. Net County Cost:	\$ -0-	Budget Adjustment:	No
	Annual Net County Cost:	\$ -0-	For Fiscal Year:	03/04

SOURCE OF FUNDS: N/A	Positions To Be Deleted Per A-30	<input type="checkbox"/>
	Requires 4/5 Vote	<input checked="" type="checkbox"/>

C.E.O. RECOMMENDATION:
APPROVE

County Executive Office Signature *Bhonda King*

- Dep't Recomm.: Policy
- Per Exec. Ofc.: Policy
- Consent
- Consent

Prev. Agn. Ref.: _____ **District:** 4 **Agenda Number:** _____

2 **COUNTY RESOLUTION NO. 2004-191**
3 **NOTICE OF INTENT TO CONVEY SURPLUS REAL PROPERTY**
4 **TO THE CITY OF INDIO**
5 **(Fourth Supervisorial District)**

6 **WHEREAS**, the County holds title to property that will no longer be needed or
7 necessary for County or public purposes; and

8 **WHEREAS**, this surplus property is identified as Assessor Parcel Numbers 611-
9 102-016 and 611-102-017, and also commonly known as 82-409 and 82-423 Miles
10 Avenue, Indio, said property more particularly described in Exhibit "A", attached hereto;
11 and

12 **WHEREAS**, the City of Indio has expressed a desire and need for this property
13 for City purposes; and

14 **WHEREAS**, this property has been appraised and the City will be providing
15 resources comparable to the full-appraised value, said transaction to be confirmed by a
16 Memorandum of Understanding between the County and City.

17 **BE IT RESOLVED, DETERMINED, AND ORDERED** by the Board of
18 Supervisors of the County of Riverside, State of California, that certain real property
19 located within the County of Riverside, State of California, shown on Exhibit "A"
20 attached to this resolution, is surplus to the County's needs and is no longer needed for
21 County purposes, and NOTICE IS HEREBY GIVEN that it is the intention of the Board
22 of Supervisors to convey said real property pursuant to the provisions of Section 25365
23 of the Government Code upon the following term and conditions:

24 1. The nature of the property to be conveyed is described as Assessor Parcel
25 Numbers 611-102-016 and 611-102-017, more commonly known as 82-409 and 82-423
26 Miles Avenue, Indio.

27 2. The subject property is to be conveyed to the City of Indio.

28 3. The full-appraised value will be provided to the County pursuant to a
subsequent Memorandum of Understanding.

EXHIBIT "A"

THE LAND REFERRED TO IN THIS REPORT IS SITUATED IN THE STATE OF CALIFORNIA, COUNTY OF RIVERSIDE AND IS DESCRIBED AS FOLLOWS:

PARCEL 1:

LOTS 1, 2 AND 3 OF BRANDON'S PALM HEIGHTS, IN THE CITY OF INDIO, COUNTY OF RIVERSIDE, STATE OF CALIFORNIA, AS PER MAP RECORDED IN BOOK 19, PAGE 74 OF MAPS, THE OFFICE OF THE COUNTY RECORDER OF SAID COUNTY.

PARCEL 2:

THAT PORTION OF THE NORTHEAST QUARTER OF THE SOUTHWEST QUARTER OF SECTION 23, TOWNSHIP 5 SOUTH, RANGE 7 EAST, SAN BERNARDINO MERIDIAN IN THE CITY OF INDIO, COUNTY OF RIVERSIDE, STATE OF CALIFORNIA, AS PER MAP RECORDED IN BOOK 13, PAGE 30 OF RECORDS OF SURVEY, IN THE OFFICE OF THE COUNTY RECORDER OF SAID COUNTY, DESCRIBED AS FOLLOWS:

BEGINNING AT THE NORTHEAST CORNER OF LOT 1 OF BRANDON'S PALM HEIGHTS, AS SHOWN BY MAP ON FILE IN BOOK 19, PAGE 74 OF MAPS, RIVERSIDE COUNTY RECORDS.

THENCE SOUTH 89° 47' AND 00" EAST, ON THE SOUTHERLY LINE OF MILES AVENUE, 150.40 FEET;

THENCE SOUTH 00° 06' 45" WEST, 240.00 FEET;

THENCE NORTH 89° 47' 00" WEST, 150.79 FEET TO THE SOUTHEAST CORNER OF LOT 4 OF SAID BRANDON'S PALM HEIGHTS;

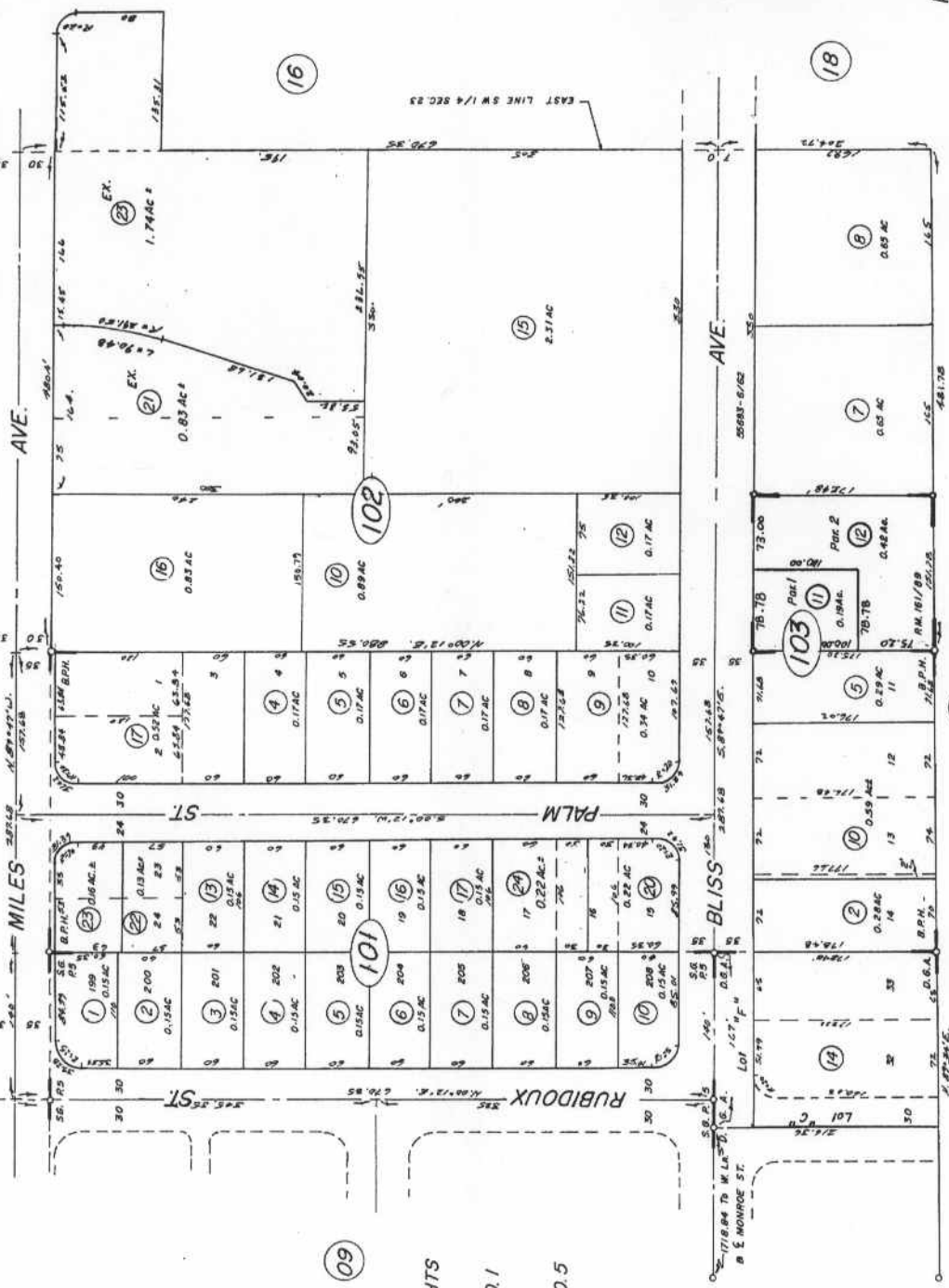
THENCE NORTH 00° 12' 00" EAST, 240.00 FEET TO THE TRUE POINT OF BEGINNING.

611-10
25-15-1

T. C. A. 007-067

POR. NE 4, SW 4, SEC. 23, T. 5S, R. 7E. (07)

THIS MAP IS FOR
ASSESSMENT PURPOSES ONLY



BRANDONS PALM HEIGHTS
M.B. 19/74
DEGLET GROVE ADD. NO. 1
M.B. 20/13,14
SUN GOLD PARK UNIT NO. 5
M.B. 24/60

DATA: R.S. 13/30, City of Indio Street
B E. MONROE ST.
Maps

DATE	OLD NO.	NEW NO.
1/18/88	1-3	17
1/18/88	4-5	18
1/18/88	6-12	19-25
1/18/88	13-14	26-27
1/18/88	15-16	28-29
1/18/88	17-18	30-31
1/18/88	19-20	32-33
1/18/88	21-22	34-35
1/18/88	23-24	36-37
1/18/88	25-26	38-39
1/18/88	27-28	40-41
1/18/88	29-30	42-43
1/18/88	31-32	44-45
1/18/88	33-34	46-47
1/18/88	35-36	48-49
1/18/88	37-38	50-51
1/18/88	39-40	52-53
1/18/88	41-42	54-55
1/18/88	43-44	56-57
1/18/88	45-46	58-59
1/18/88	47-48	60-61
1/18/88	49-50	62-63
1/18/88	51-52	64-65
1/18/88	53-54	66-67
1/18/88	55-56	68-69
1/18/88	57-58	70-71
1/18/88	59-60	72-73
1/18/88	61-62	74-75
1/18/88	63-64	76-77
1/18/88	65-66	78-79
1/18/88	67-68	80-81
1/18/88	69-70	82-83
1/18/88	71-72	84-85
1/18/88	73-74	86-87
1/18/88	75-76	88-89
1/18/88	77-78	90-91
1/18/88	79-80	92-93
1/18/88	81-82	94-95
1/18/88	83-84	96-97
1/18/88	85-86	98-99
1/18/88	87-88	100-101
1/18/88	89-90	102-103
1/18/88	91-92	104-105
1/18/88	93-94	106-107
1/18/88	95-96	108-109
1/18/88	97-98	110-111
1/18/88	99-100	112-113
1/18/88	101-102	114-115
1/18/88	103-104	116-117
1/18/88	105-106	118-119
1/18/88	107-108	120-121
1/18/88	109-110	122-123
1/18/88	111-112	124-125
1/18/88	113-114	126-127
1/18/88	115-116	128-129
1/18/88	117-118	130-131
1/18/88	119-120	132-133
1/18/88	121-122	134-135
1/18/88	123-124	136-137
1/18/88	125-126	138-139
1/18/88	127-128	140-141
1/18/88	129-130	142-143
1/18/88	131-132	144-145
1/18/88	133-134	146-147
1/18/88	135-136	148-149
1/18/88	137-138	150-151
1/18/88	139-140	152-153
1/18/88	141-142	154-155
1/18/88	143-144	156-157
1/18/88	145-146	158-159
1/18/88	147-148	160-161
1/18/88	149-150	162-163
1/18/88	151-152	164-165
1/18/88	153-154	166-167
1/18/88	155-156	168-169
1/18/88	157-158	170-171
1/18/88	159-160	172-173
1/18/88	161-162	174-175
1/18/88	163-164	176-177
1/18/88	165-166	178-179
1/18/88	167-168	180-181
1/18/88	169-170	182-183
1/18/88	171-172	184-185
1/18/88	173-174	186-187
1/18/88	175-176	188-189
1/18/88	177-178	190-191
1/18/88	179-180	192-193
1/18/88	181-182	194-195
1/18/88	183-184	196-197
1/18/88	185-186	198-199
1/18/88	187-188	200-201
1/18/88	189-190	202-203
1/18/88	191-192	204-205
1/18/88	193-194	206-207
1/18/88	195-196	208-209
1/18/88	197-198	210-211
1/18/88	199-200	212-213
1/18/88	201-202	214-215
1/18/88	203-204	216-217
1/18/88	205-206	218-219
1/18/88	207-208	220-221
1/18/88	209-210	222-223
1/18/88	211-212	224-225
1/18/88	213-214	226-227
1/18/88	215-216	228-229
1/18/88	217-218	230-231
1/18/88	219-220	232-233
1/18/88	221-222	234-235
1/18/88	223-224	236-237
1/18/88	225-226	238-239
1/18/88	227-228	240-241
1/18/88	229-230	242-243
1/18/88	231-232	244-245
1/18/88	233-234	246-247
1/18/88	235-236	248-249
1/18/88	237-238	250-251
1/18/88	239-240	252-253
1/18/88	241-242	254-255
1/18/88	243-244	256-257
1/18/88	245-246	258-259
1/18/88	247-248	260-261
1/18/88	249-250	262-263
1/18/88	251-252	264-265
1/18/88	253-254	266-267
1/18/88	255-256	268-269
1/18/88	257-258	270-271
1/18/88	259-260	272-273
1/18/88	261-262	274-275
1/18/88	263-264	276-277
1/18/88	265-266	278-279
1/18/88	267-268	280-281
1/18/88	269-270	282-283
1/18/88	271-272	284-285
1/18/88	273-274	286-287
1/18/88	275-276	288-289
1/18/88	277-278	290-291
1/18/88	279-280	292-293
1/18/88	281-282	294-295
1/18/88	283-284	296-297
1/18/88	285-286	298-299
1/18/88	287-288	300-301
1/18/88	289-290	302-303
1/18/88	291-292	304-305
1/18/88	293-294	306-307
1/18/88	295-296	308-309
1/18/88	297-298	310-311
1/18/88	299-300	312-313
1/18/88	301-302	314-315
1/18/88	303-304	316-317
1/18/88	305-306	318-319
1/18/88	307-308	320-321
1/18/88	309-310	322-323
1/18/88	311-312	324-325
1/18/88	313-314	326-327
1/18/88	315-316	328-329
1/18/88	317-318	330-331
1/18/88	319-320	332-333
1/18/88	321-322	334-335
1/18/88	323-324	336-337
1/18/88	325-326	338-339
1/18/88	327-328	340-341
1/18/88	329-330	342-343
1/18/88	331-332	344-345
1/18/88	333-334	346-347
1/18/88	335-336	348-349
1/18/88	337-338	350-351
1/18/88	339-340	352-353
1/18/88	341-342	354-355
1/18/88	343-344	356-357
1/18/88	345-346	358-359
1/18/88	347-348	360-361
1/18/88	349-350	362-363
1/18/88	351-352	364-365
1/18/88	353-354	366-367
1/18/88	355-356	368-369
1/18/88	357-358	370-371
1/18/88	359-360	372-373
1/18/88	361-362	374-375
1/18/88	363-364	376-377
1/18/88	365-366	378-379
1/18/88	367-368	380-381
1/18/88	369-370	382-383
1/18/88	371-372	384-385
1/18/88	373-374	386-387
1/18/88	375-376	388-389
1/18/88	377-378	390-391
1/18/88	379-380	392-393
1/18/88	381-382	394-395
1/18/88	383-384	396-397
1/18/88	385-386	398-399
1/18/88	387-388	400-401
1/18/88	389-390	402-403
1/18/88	391-392	404-405
1/18/88	393-394	406-407
1/18/88	395-396	408-409
1/18/88	397-398	410-411
1/18/88	399-400	412-413
1/18/88	401-402	414-415
1/18/88	403-404	416-417
1/18/88	405-406	418-419
1/18/88	407-408	420-421
1/18/88	409-410	422-423
1/18/88	411-412	424-425
1/18/88	413-414	426-427
1/18/88	415-416	428-429
1/18/88	417-418	430-431
1/18/88	419-420	432-433
1/18/88	421-422	434-435
1/18/88	423-424	436-437
1/18/88	425-426	438-439
1/18/88	427-428	440-441
1/18/88	429-430	442-443
1/18/88	431-432	444-445
1/18/88	433-434	446-447
1/18/88	435-436	448-449
1/18/88	437-438	450-451
1/18/88	439-440	452-453
1/18/88	441-442	454-455
1/18/88	443-444	456-457
1/18/88	445-446	458-459
1/18/88	447-448	460-461
1/18/88	449-450	462-463
1/18/88	451-452	464-465
1/18/88	453-454	466-467
1/18/88	455-456	468-469
1/18/88	457-458	470-471
1/18/88	459-460	472-473
1/18/88	461-462	474-475
1/18/88	463-464	476-477
1/18/88	465-466	478-479
1/18/88	467-468	480-481
1/18/88	469-470	482-483
1/18/88	471-472	484-485
1/18/88	473-474	486-487
1/18/88	475-476	488-489
1/18/88	477-478	490-491
1/18/88	479-480	492-493
1/18/88	481-482	494-495
1/18/88	483-484	496-497
1/18/88	485-486	498-499
1/18/88	487-488	500-501
1/18/88	489-490	502-503
1/18/88	491-492	504-505
1/18/88	493-494	506-507
1/18/88	495-496	508-509
1/18/88	497-498	510-511
1/18/88	499-500	512-513
1/18/88	501-502	514-515
1/18/88	503-504	516-517
1/18/88	505-506	518-519
1/18/88	507-508	520-521
1/18/88	509-510	522-523
1/18/88	511-512	524-525
1/18/88	513-514	526-527
1/18/88	515-516	528-529
1/18/88	517-518	530-531
1/18/88	519-520	532-533
1/18/88	521-522</	