

SUBMITTAL TO THE BOARD OF SUPERVISORS
COUNTY OF RIVERSIDE, STATE OF CALIFORNIA



FROM: TLMA – Transportation Dept.

SUBMITTAL DATE:

May 10, 2004

SUBJECT: Approval of **TRACT 30736**
A Schedule "B" Subdivision in the Lake Mathews Area

RECOMMENDED MOTION: That the Board approve the Improvement Agreements and Securities as approved by County Counsel, approve the final map and authorize the Chairman to sign the Improvement Agreements and map for Tract 30736.

BACKGROUND: This map complies in all respects with the provisions of Division 3 of Title 15 of the Government Code and applicable local ordinances. The developer desires to enter into Improvement Agreements to guarantee the construction of the required improvements and has submitted Improvement Agreements and Securities which have been approved by County Counsel.

Departmental Concurrence

REVIEWED BY EXECUTIVE OFFICE
James J. Siefert
DATE 5/10/04

George A. Johnson

HS:lf
Submittals: Final Map
Road/Drainage Improvement Agrmts
Water System Improvement Agrmts
Sewer System Improvement Agrmts
Survey Monument Agreements

George A. Johnson
Director of Transportation

- Consent
- Policy
- Consent
- Policy

COUNTY OF RIVERSIDE
OFFICE OF THE CLERK
EXECUTIVE OFFICE

Prev. Agn. Ref.:

District: 1

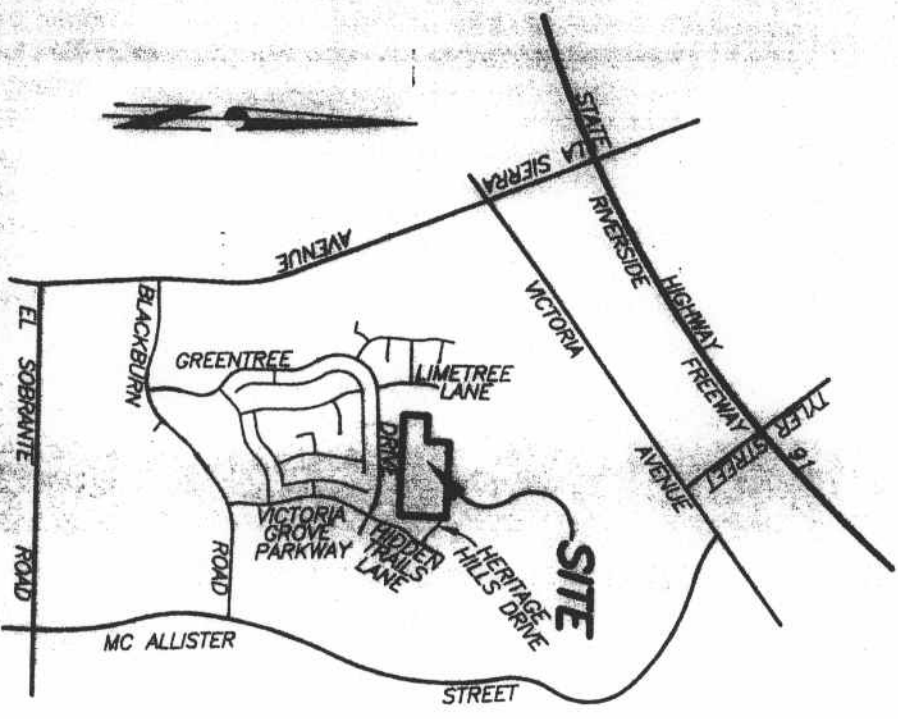
Agenda Number:

2.10

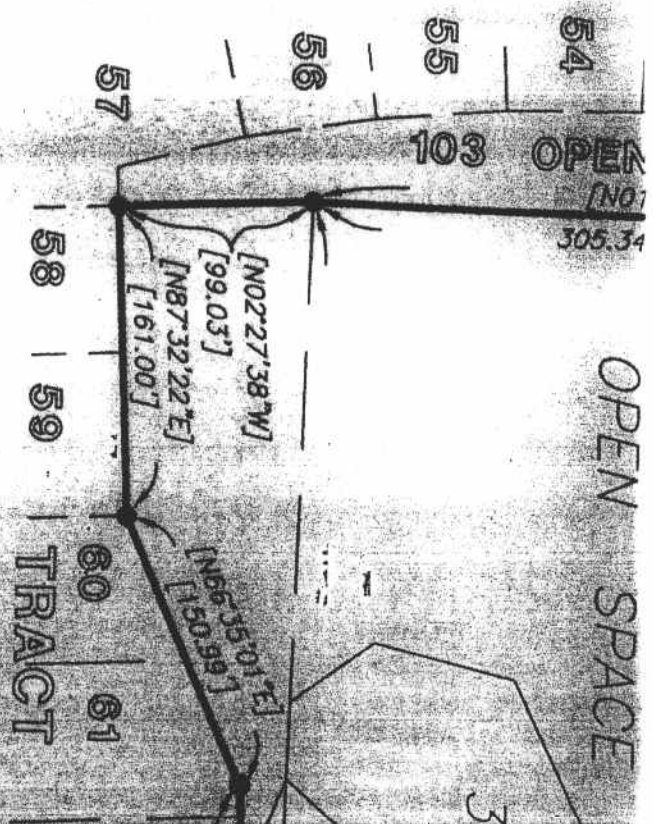
All Drainage Easements shall be kept free of buildings, obstructions, and encroachments by land fills.

This Tract contains 20.90 Acres.

VICINITY MAP
NOT TO SCALE



TRACT



EASEMENT NOTES

- A** Indicates a slope easement in favor of Vic 23, 2001 as inst. no. 228396, O. R. Riv.
- B** Indicates an easement for utilities and incl of Pacific Bell Telephone Company, recorded no. 187111, O. R. Riv., Co., Co. (See Shee