

SUBMITTAL TO THE BOARD OF SUPERVISORS
COUNTY OF RIVERSIDE, STATE OF CALIFORNIA

928A



FROM: County Counsel
SUBJECT: Ordinance No. 348.4188

SUBMITTAL DATE: May 26, 2004

RECOMMENDED MOTION: That the Board of Supervisors adopt Ordinance No. 348.4188 amending the zoning in the Rancho California Area shown on Map No. 2.2072 Change of Zone Case No. 6688.

BACKGROUND: Change of Zone Case No. 6688 was approved by the Board of Supervisors on May 13, 2003.

Katherine A. Lind
KATHERINE A. LIND
Deputy County Counsel

C.E.O. RECOMMENDATION: APPROVE

Lisa Brandt

County Executive Office Signature

Policy
 Policy

Consent
 Consent

Department Recommendation:
Per Executive Office:

11:11 AM - 8 MAY 2004
RECEIVED RIVERSIDE COUNTY

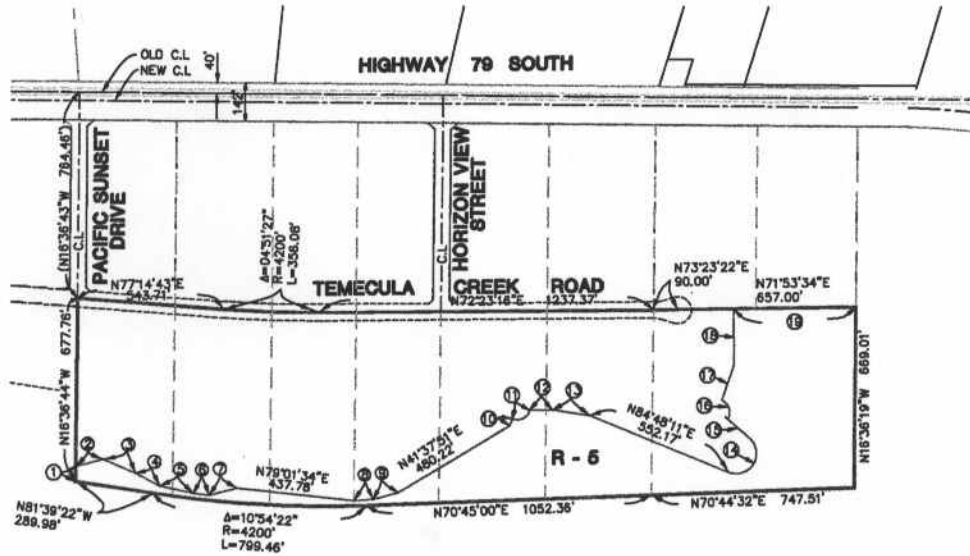
Prev. Agn. ref.

Dist. |

AGENDA NO.

2.3

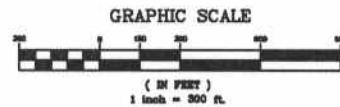
**RANCHO CALIFORNIA
SEC 14 & 15 OF T.8S, R.2W, S.B.B. & M**



NO.	BEARING	RADIUS	LENGTH	TANGENT
1	N16°37'55"W	--	55.00'	--
2	N58°00'52"E	--	104.28'	--
3	N84°03'40"W	--	129.87'	--
4	N79°08'54"E	--	102.08'	--
5	N85°15'34"W	--	128.21'	--
6	N79°11'49"E	--	60.15'	--
7	N56°17'57"E	--	105.80'	--
8	N68°56'40"E	--	71.60'	--
9	N58°32'11"E	--	98.20'	--
10	N05°40'13"E	--	27.47'	--
11	90°22'32"	47.00'	81.52'	55.40'
12	N72°23'16"E	--	84.34'	--
13	N81°06'44"E	--	142.41'	--
14	159°35'59"	75.00'	208.92'	416.83'
15	N64°24'10"W	--	109.90'	--
16	93°39'13"	50.00'	81.73'	53.29'
17	N01°47'33"E	--	138.11'	--
18	N18°08'26"W	--	206.17'	--
19	N72°02'01"E	--	453.28'	--

LEGEND

R-5 OPEN AREA COMBINING
ZONE RES. DEVELOPMENTS

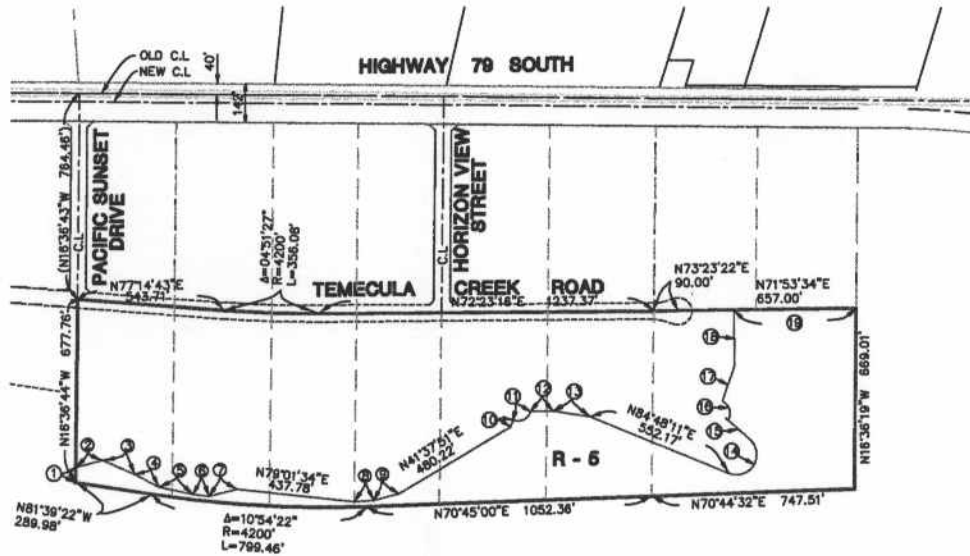


**MAP NO. 2.2072
CHANGE OF OFFICIAL ZONING PLAN
AMENDING
MAP NO. 2, ORDINANCE NO. 348
CHANGE OF ZONE CASE NO. 6886
ADOPTED BY ORDINANCE NO. 348.4188
DATE: JUNE 16, 2004
RIVERSIDE COUNTY BOARD OF SUPERVISORS**



Imasco-Pacific
42888412878
27431 Enterprise Circle West
Tamarac, Ca. 92090

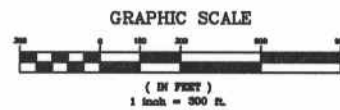
**RANCHO CALIFORNIA
SEC 14 & 15 OF T.8S, R.2W, S.B.B. & M**



NO.	BEARING	RADIUS	LENGTH	TANGENT
1	N16°37'55"W	--	55.00'	--
2	N58°00'52"E	--	104.28'	--
3	N84°03'40"W	--	129.87'	--
4	N79°08'54"E	--	102.08'	--
5	N85°15'34"W	--	128.21'	--
6	N79°11'49"E	--	60.15'	--
7	N56°17'57"E	--	105.80'	--
8	N68°58'40"E	--	71.60'	--
9	N58°32'11"E	--	98.20'	--
10	N05°40'13"E	--	27.47'	--
11	98°22'32"	47.00'	81.52'	55.40'
12	N72°23'16"E	--	84.34'	--
13	N81°06'44"E	--	142.41'	--
14	159°35'59"	75.00'	208.92'	416.63'
15	N84°24'10"W	--	109.90'	--
16	93°39'13"	50.00'	81.73'	53.29'
17	N01°47'33"E	--	138.11'	--
18	N18°06'26"W	--	206.17'	--
19	N72°02'01"E	--	453.28'	--

LEGEND

R-6 OPEN AREA COMBINING
ZONE RES. DEVELOPMENTS



**MAP NO. 2.2072
CHANGE OF OFFICIAL ZONING PLAN
AMENDING
MAP NO. 2, ORDINANCE NO. 348
CHANGE OF ZONE CASE NO. 6628
ADOPTED BY ORDINANCE NO. 348.4188
DATE: JUNE 16, 2004
RIVERSIDE COUNTY BOARD OF SUPERVISORS**



Innovative Planning & Consulting
4480 BELL STREET
27431 Enterprise Circle West
Temecula, Ca. 92590