

**SUBMITTAL TO THE BOARD OF SUPERVISORS
COUNTY OF RIVERSIDE, STATE OF CALIFORNIA**

901 B



FROM: TLMA - Transportation Dept.

SUBMITTAL DATE:

June 7, 2004

SUBJECT: Accepting a portion of Gettis Road and Bach Road for public road and utility purpose, in the Aguanga area, Third Supervisorial District.

RECOMMENDED MOTION: Adopt Resolution No. 2004-243, accepting a portion of Gettis Road and Bach Road for public road and utility purposes, but not into the County Maintain Road System.

BACKGROUND: Southern California Edison has requested the acceptance of Gettis Road and Bach Road to enable their company to install their facilities by encroachment permit.

Departmental Concurrence

FORM APPROVED
COUNTY COUNSEL

MAY 19 2004

BY Anderson V. Ubo

REVIEWED BY EXECUTIVE OFFICE

DATE 6/7/04

GAF

Attachments: Resolution No. 2004-243
Exhibit "A"

George A. Johnson
Director of Transportation

- Dep't Recomm.: Consent Policy
- Per Exec. Ofc.: Consent Policy

Prev. Agn. Ref.:

District: 3

Agenda Number:

2
3 **RESOLUTION NO 2004-243**

4 ACCEPTING PORTIONS OF GETTIS ROAD AND BACH ROAD IN THE AGUANGA
5 AREA FOR PUBLIC USE.

6 (Third Supervisorial District)

7 **WHEREAS**, the hereinafter described portions of Gettis Road and Bach
8 Road were offered for dedication for public road and public utility purposes by the Parcel
9 Map hereinafter-referred to, which offers of dedication have not been previously accepted
10 by the County of Riverside, now, therefore;

11
12 **BE IT RESOLVED, DETERMINED AND ORDERED** by the Board of Supervisors
13 of the County of Riverside, State of California, in regular session assembled on June 15,
14 2004, that this Board accepts the offers of dedication and recognizes that said roads are
15 public roads open for use by the general public;

16
17 **BE IT FURTHER RESOLVED, DETERMINED AND ORDERED**, that this
18 acceptance is for the purpose of vesting title in the County of Riverside on behalf of the
19 public for public road and utility uses, and is not an acceptance of the roads into the
20 County Maintained Road System pursuant to Section 941 of the Streets and Highways
21 Code and that said roads will not become part of the County Maintained Road System
22 unless subsequently accepted into said Maintained Road System by a resolution adopted
23 by this Board;

24 Said roads are in the County of Riverside, State of California, and are described
25 as follows:

1 **RESOLUTION No. 2004-243**

2 **GETTIS ROAD** (See Exhibit "A")

3 That portion of Gettis Road (30.00 foot half width) dedicated as lots "F" and "G" on
4 Parcel Map No. 14651 recorded in Book 83, Pages 57 and 58 of Parcel Maps on file with
5 the Recorders Office of Riverside County California.

6
7 **BACH ROAD** (See Exhibit "A")

8 Bach Road (60 feet wide) dedicated as Lots "B" through "E" inclusive on said
9 Parcel Map No. 14651.

10
11 **BE IT FURTHER RESOLVED, DETERMINED AND ORDERED** that the Clerk of
12 the Board shall cause a certified copy of this resolution to be recorded in the Office of the
13 Recorder of Riverside County, California.

14
15
16
17
18
19
20
21
22
23 EDH:gf

24 W.O.# SU1020

25 C:\Documents and Settings\gfinn\Files\Acceptances\Bach Rd SCE.doc

FORM APPROVED
COUNTY COUNSEL

MAY 19 2004

BY Gordon V. Ubo

N. 4°53'43" W.

P M

(N. 4°52'05" W.

33

17 / 4

PARCEL 1
2.79 ACS. GROSS
2.41 ACRES NET

PARCEL 2
3.00 ACS. GROSS
2.85 ACRES NET

PARCEL 3
4.00 ACS. GROSS
3.33 ACRES NET

PARCEL 4
4.00 ACS. GROSS
3.14 ACRES NET

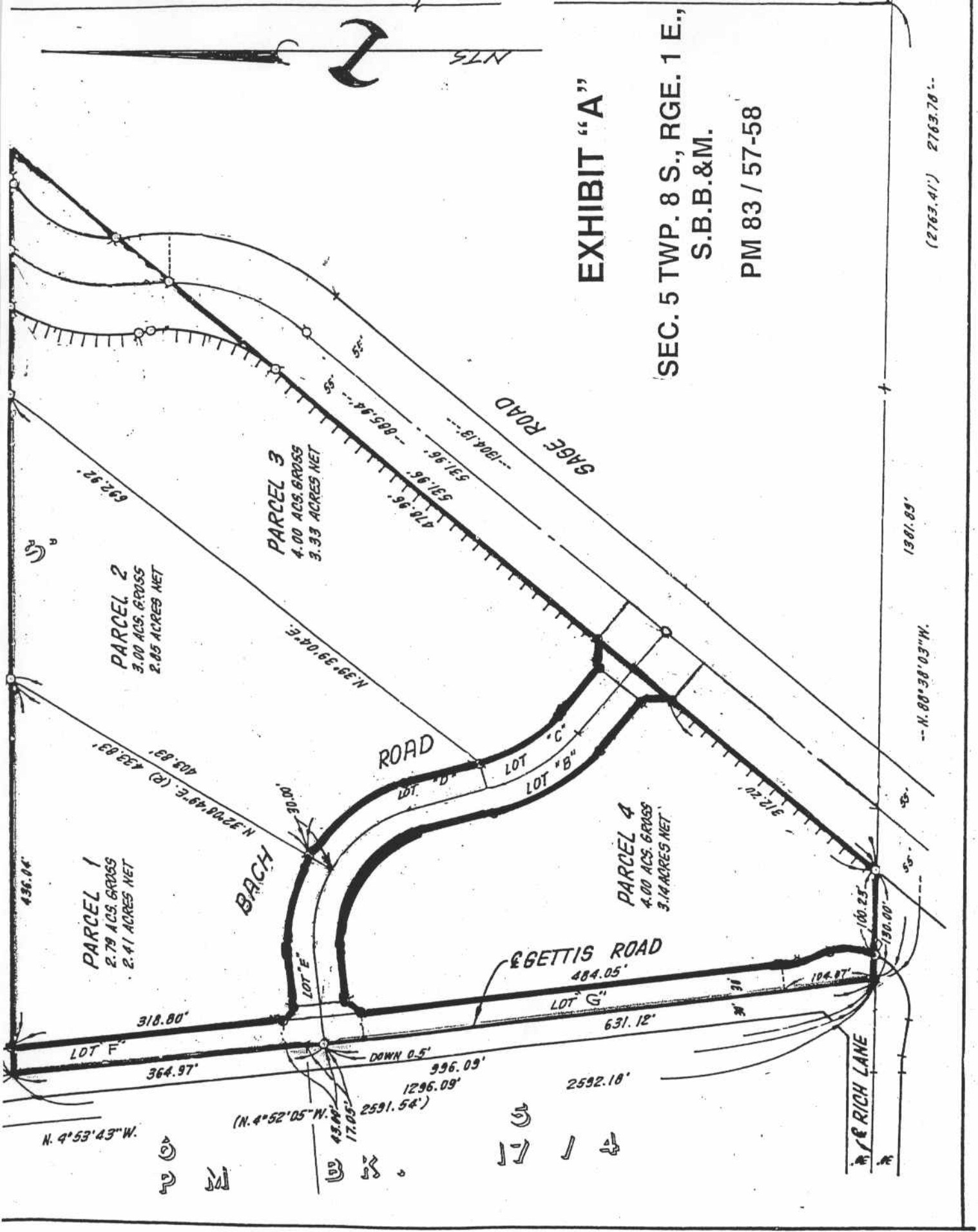
EXHIBIT "A"

SEC. 5 TWP. 8 S., RGE. 1 E.,

S.B.B.&M.

PM 83 / 57-58

(2763.41) 2763.70



3

1301.83'

-- N. 80°38'03" W.

50'

RICH LANE

100.25'

150.00'

50'

50'

50'

+

+

NTS



GAGE ROAD

ROAD

GETTIS ROAD

BACH

LOT F

LOT E

LOT D

LOT C

LOT B

LOT A

LOT G

632.92'

318.80'

364.97'

N. 39°39'04" E.

DOWN 0.5'

996.09'

1296.09'

2591.54'

43.86'

17.05'

35'

35'

35'

35'

35'

35'

35'

35'

35'

35'

35'

35'

35'

531.96'

531.96'

531.96'

531.96'

531.96'

531.96'

531.96'

531.96'

531.96'

531.96'

531.96'

531.96'

531.96'

531.96'

531.96'

531.96'

531.96'

531.96'

436.04'

N. 32°08'49" E. (2)

439.83'

412.83'

402.83'

392.83'

382.83'

372.83'

362.83'

352.83'

342.83'

332.83'

322.83'

312.83'

302.83'

292.83'

282.83'

272.83'

262.83'

252.83'

242.83'

232.83'

222.83'

212.83'

202.83'

192.83'

182.83'

172.83'

162.83'

152.83'

142.83'

132.83'

122.83'

112.83'

102.83'

92.83'

82.83'

72.83'

62.83'

52.83'

42.83'

32.83'

22.83'

12.83'

2.83'

0.83'

0.83'

0.83'

0.83'

0.83'

0.83'

0.83'

0.83'

0.83'

0.83'

0.83'

0.83'

0.83'

0.83'

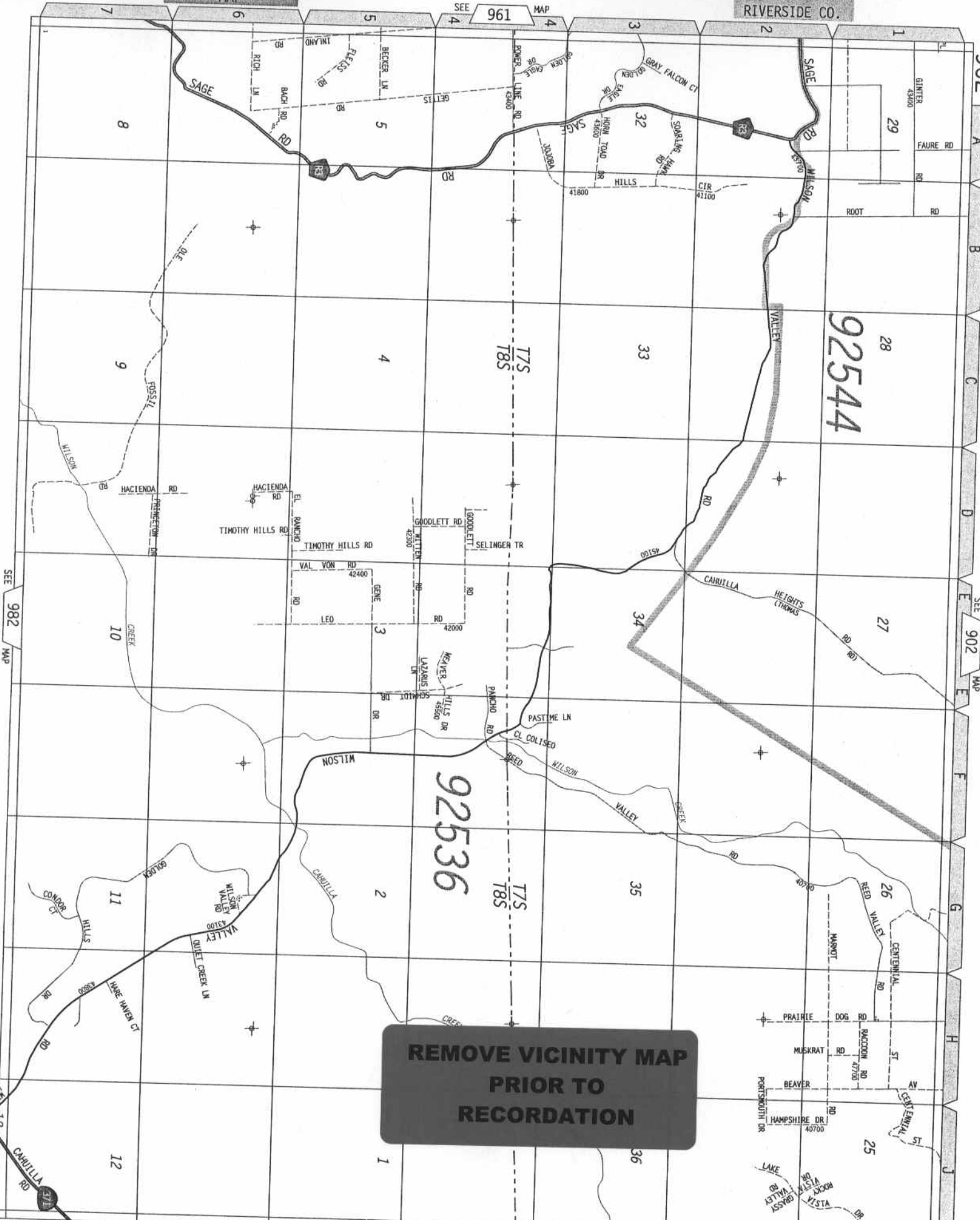
0.83'

0.83'

0.83'

0.83'

0.83'



92544

92536

**REMOVE VICINITY MAP
PRIOR TO
RECORDATION**

SEE 982 MAP

902

A

B

C

D

E

F

G

H

I

J

SEE 902 MAP