

**SUBMITTAL TO THE BOARD OF SUPERVISORS  
COUNTY OF RIVERSIDE, STATE OF CALIFORNIA**

125 B



**FROM:** TLMA-Transportation Department

**SUBMITTAL DATE:**

June 21, 2004

**SUBJECT:** Landscaping and Lighting Maintenance District No. 89-1-Consolidated, Annexation of Location 2 to Zone 15.

**RECOMMENDED MOTION:** That the Board:

1. Adopt Resolution No. 2004-307, Resolution of the County of Riverside confirming the diagram and assessment for Location 2 of Zone 15 of Landscaping and Lighting Maintenance District No. 89-1-Consolidated and levying assessments on all assessable lots and parcels of land therein for fiscal year 2004-05.
2. Direct the Auditor-Controller's office to establish an interest-bearing sub-fund of Fund 20300 to receive deposits and interest thereon from Location 2 of Zone 15 of Landscaping and Lighting Maintenance District No. 89-1-Consolidated; in accordance with Section 22655-22656 of the Streets and Highways Code.

FORM APPROVED  
COUNTY COUNSEL

JUN 16 2004

BY *[Signature]*

*[Signature]*  
George A. Johnson  
Director of Transportation

<b>FINANCIAL DATA</b>	Current F.Y. Total Cost:	\$ 0	In Current Year Budget:	No
	Current F.Y. Net County Cost:	\$ 0	Budget Adjustment:	No
	Annual Net County Cost:	\$ 0	For Fiscal Year:	2004-2005

<b>SOURCE OF FUNDS:</b> Landscaping and Lighting Maintenance District No. 89-1-Consolidated	Positions To Be Deleted Per A-30	<input type="checkbox"/>
	Requires 4/5 Vote	<input type="checkbox"/>

**C.E.O. RECOMMENDATION:** **APPROVE**

**County Executive Office Signature** *[Signature]*

Consent  
 Policy  
 Consent  
 Policy  
 Dep't Recomm.:  
 Per Exec. Ofc.:

*[Faint background text and stamps]*

**SUBJECT:** Landscaping and Lighting Maintenance District No. 89-1-Consolidated, Annexation of Location 2 to Zone 15.

June 21, 2004

Page 2 of 2

**BACKGROUND:**

On June 8, 2004, a public hearing was held to receive all testimony regarding the annexation of Location 2 to Zone 15 of Landscaping and Lighting Maintenance District No. 89-1-Consolidated ("L&LM Dist. No. 89-1-C"). After closing the public hearing, the Board directed the Director of Transportation, or his/her designee, to tally the ballots that had been received prior to the close of the hearing. The ballots were to be tabulated on June 9, 2004 at 10:00 a.m. in Conference Room B on the 8<sup>th</sup> Floor of the County Administrative Center. The tabulation shows that votes representing 28 parcels out of a possible 28 parcels were cast, and that 28 votes ( or 100%) were cast in favor of the annexation of Location 2 to Zone 15 of L&LM Dist. No. 89-1-C and the levy and enrollment of the special assessment.

Adoption of Resolution No. 2004-307 confirms the assessment levy as indicated in the Engineer's Report for fiscal year 2004-05 for Location 2 of Zone 15 of L&LM Dist. No. 89-1-C and orders the placement of the annual assessment on the County's Assessment Roll for fiscal year 2004-05.

RESOLUTION NO. 2004-307

**RESOLUTION OF THE BOARD OF SUPERVISORS ORDERING THE ANNEXATION OF  
LOCATION 2 OF ZONE 15 TO LANDSCAPING AND LIGHTING MAINTENANCE  
DISTRICT NO. 89-1-CONSOLIDATED OF THE COUNTY OF RIVERSIDE AND  
CONFIRMING THE DIAGRAM AND ASSESSMENT FOR LOCATION 2 OF ZONE 15  
OF LANDSCAPING AND LIGHTING MAINTENANCE DISTRICT NO. 89-1-CONSOLIDATED  
AND LEVYING ASSESSMENTS ON ALL ASSESSABLE LOTS AND PARCELS  
OF LAND THEREIN FOR THE FISCAL YEAR 2004-05**

WHEREAS, on April 20, 2004, the Board of Supervisors (hereinafter the "Board of Supervisors") of the County of Riverside (hereinafter the "County"), adopted Resolution No. 2004-163, pursuant to Section 22608 and Section 22585 et. seq. of the Streets and Highways Code, declaring the intention of the Board of Supervisors to order the annexation of Location 2 to Zone 15 of Landscaping and Lighting Maintenance District No. 89-1-Consolidated (hereinafter "L&LMD No. 89-1-C") of the County pursuant to Landscaping and Lighting Act of 1972, being Part 2 (commencing with Section 22500) of Division 15 of the Streets and Highways Code, and giving notice of and setting a public hearing for 9:30 a.m. on June 8, 2004 at the meeting room of the Board of Supervisors and requiring that the notice of the public hearing and ballots be mailed to all owners of property within Location 2 of Zone 15 as shown on the equalized tax roll; and

WHEREAS, notice of said public hearing was duly published and mailed as required by Resolution No. 2004-163, Section 22608 of the Streets and Highways Code and Sections 53753 and 54954.6 of the Government Code and ballots were timely mailed to all owners of property within said Location 2 of Zone 15 as shown on the equalized tax roll; and

WHEREAS, at 9:30 a.m. on June 8, 2004, as set forth in Resolution No. 2004-163, the Board of Supervisors held a public hearing and afforded all interested persons an opportunity to be heard, and considered all oral statements and all written protest or communications made or filed by any interested persons, closed the public hearing and directed the Director of Transportation, or his/her designee, as an impartial person having no vested interest in the annexation of Location 2 to Zone 15 of L&LM Dist.

1 No. 89-1-C as required by Section 53753(e) of the Government Code to tally the ballots that had been  
2 received prior to the close of the public hearing; and

3 WHEREAS, the tally of the ballots show that ballots were timely received from the owners of 28  
4 parcels out of a possible 28 parcels and that 28 parcels (100 percent of the ballots received) voted in  
5 favor of annexation of Location 2 to Zone 15 of L&LM Dist. No. 89-1-C and the levy of an annual  
6 assessment in said Location 2 beginning fiscal year 2004-05; and

7 WHEREAS, the Board of Supervisors may proceed, pursuant to Section 22631 of the Streets  
8 and Highways Code, to adopt a resolution confirming the diagram and assessment, either as originally  
9 proposed, or as changed by the Board, and the adoption of such a resolution shall constitute the levy of  
10 an assessment on all assessable lots and parcels of land within Location 2 of Zone 15 of L&LM Dist.  
11 No. 89-1-C beginning fiscal year 2004-05.

12 NOW, THEREFOR, BE IT RESOLVED, FOUND, DETERMINED, AND ORDERED by the Board  
13 of Supervisors of the County in regular session on June 29, 2004 as follows:

14 Section 1. Findings. The Board of Supervisors finds:

- 15 (a) the proceeding recitals are correct;
- 16 (b) compliance has been had with all the requirements of the Landscaping and Lighting Act  
17 of 1972, being Part 2 (commencing with Section 22500) of Division 15 of the Streets and  
18 Highways Code, and Sections 53753 and 54954.6 of the Government Code;
- 19 (c) a majority protest to the annexation of and annual assessment of Location 2 of Zone 15  
20 of L&LM Dist. No. 89-1-C has not been filed;
- 21 (d) the tally of the mailed ballots timely received was 100 percent voted in favor of the  
22 annexation of Location 2 to Zone 15 of L&LM Dist. No. 8-1-C and the levy of an annual  
23 assessment beginning fiscal year 2004-05, and 0 percent voted no;
- 24 (e) the Board of Supervisors may proceed to adopt a resolution ordering the annexation of  
25 Location 2 to Zone 15 of L&LM Dist. No. 89-1-C;
- 26

1 (f) the Board of Supervisors may proceed to adopt a resolution confirming the diagram and  
2 assessment for Location 2 of Zone 15 of L&LM Dist. No. 89-1-C either as originally  
3 proposed or as changed by it; and

4 (g) the assessments to be levied on the assessable lots and parcels of land within Location  
5 2 of Zone 15 of L&LM Dist. No. 89-1C for the installation, maintenance and servicing of  
6 landscaping improvements in said Location 2 during the fiscal year 2004-05 as  
7 contained in the report of the Director of Transportation which is on file with the Clerk of  
8 the Board of Supervisors (hereinafter the "Report") are based on benefits derived by  
9 such lots and parcels from the availability of such landscaping improvements, and are  
10 not based upon the ownership of such lots and parcels.

11 Section 2. Annexation. Location 2, as proposed to be annexed to Zone 15 of L&LM Dist.  
12 No. 89-1-C, includes all the property subject to Tract Map 28493 in the County of Riverside, State of  
13 California as described in Exhibit "A" attached hereto, shall be and is annexed into L&LM Dist. No. 89-  
14 1-C.

15 Section 3. Improvements. The improvements authorized for Location 2 of Zone 15 of L&LM  
16 Dist. No. 89-1-C are:

- 17 (a) installation and planting of landscaping, including trees, shrubs, grass and other  
18 ornamental vegetation;
- 19 (b) installation of irrigation and electrical facilities;
- 20 (c) maintenance or servicing of any of the foregoing.

21 Section 4. Confirmation of Report. The Report and the assessment diagram and the  
22 assessment of estimated costs for the installation, maintenance and servicing of landscaping  
23 improvements in Location 2 of Zone 15 of L&LM Dist. No. 89-1-C for fiscal year 2004-05 as contained  
24 in the Report are confirmed.

25 Section 5. Levy of Assessment. Pursuant to Section 22631 of the Streets and Highways  
26 Code, the adoption of this resolution constitutes the levy of the assessment for the installation, and

1 maintenance or servicing of landscaping improvements in Location 2 of Zone 15 of L&LM Dist. No. 89-  
2 1-C during fiscal year 2004-05, as contained in the Report, and such assessment is levied. The Clerk of  
3 the Board of Supervisors is directed to file a certified copy of this resolution, together with the diagram  
4 and assessment contained in the Report with the County Auditor of the County of Riverside, who,  
5 pursuant to Section 22645 of the Streets and Highways Code, shall enter on the County Tax Roll  
6 opposite each lot or parcel of land the amount assesses thereupon, as shown in said assessment.

7 Section 6. Effective Date. This Resolution shall take effect from and after its date of  
8 adoption.

9  
10  
11  
12  
13  
14  
15  
16  
17  
18  
19  
20  
21  
22  
23  
24  
25  
26

**EXHIBIT "A"**

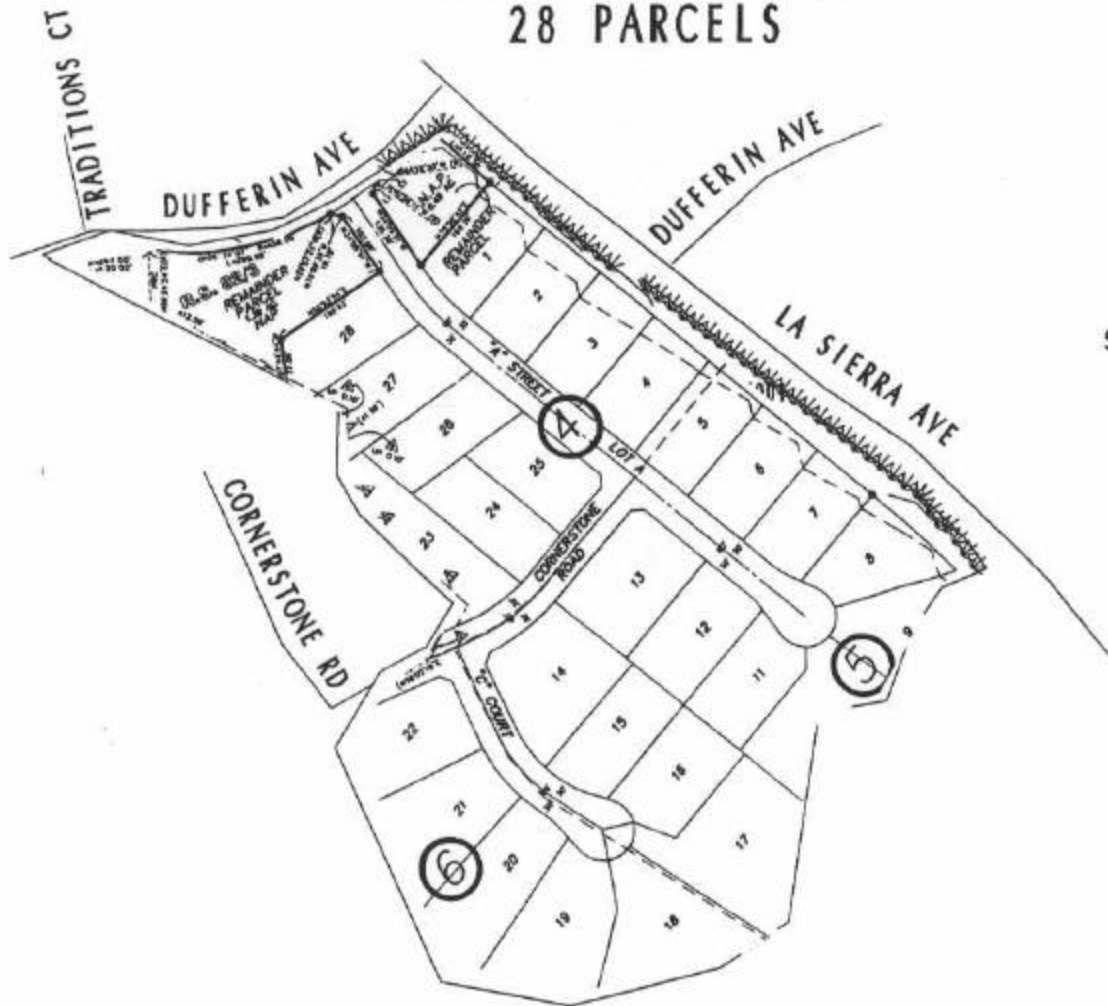
**DESCRIPTION OF BOUNDARIES**

The boundaries of Location 2 proposed to be annexed to Zone 15 of Landscaping and Lighting Maintenance District No. 89-1-Consolidated, of the County of Riverside are coterminous with the boundaries of Lots 1 through 28 as shown on Tract Map No. 28493 in the County of Riverside, State of California.

1  
2  
3  
4  
5  
6  
7  
8  
9  
10  
11  
12  
13  
14  
15  
16  
17  
18  
19  
20  
21  
22  
23  
24  
25  
26  
27  
28

LANDSCAPING AND LIGHTING MAINTENANCE  
DISTRICT NO. 89-1-CONSOLIDATED  
ZONE 15, LOCATION 2

PORTION OF SECTION 26, T.3S., R.6W.  
TRACT NO. 28493  
28 PARCELS



N  
SCALE: 1" = 300'

# ASSESSMENT DIAGRAM



 DENOTES LANDSCAPED AND MAINTAINED PARKWAY

This map was made by the Riverside County Geographic Information System. The map elements were produced by the Assessor and the Transportation and Land Management Agency which is comprised of the Transportation, Building & Safety, and Planning departments.

MARCH 23, 2004