

SUBMITTAL TO THE BOARD OF SUPERVISORS  
COUNTY OF RIVERSIDE, STATE OF CALIFORNIA



FROM: County Counsel

SUBMITTAL DATE: July 14, 2004

SUBJECT: Ordinance No. 348.4207

**RECOMMENDED MOTION:** That the Board of Supervisors adopt Ordinance No. 348.4207 amending the zoning in the Cathedral City/Palm Desert District shown on Map No. 10.045 Change of Zone Case No. 6076.

**BACKGROUND:** Change of Zone Case No. 6076 was approved by the Board of Supervisors on August 31, 1993.

  
KATHERINE A. LIND  
Deputy County Counsel

C.E.O. RECOMMENDATION:

**APPROVE**



County Executive Office Signature

Policy  
 Policy

Consent  
 Consent

Department Recommendation:  
Per Executive Office:

Prev. Agn. ref.

Dist. 5

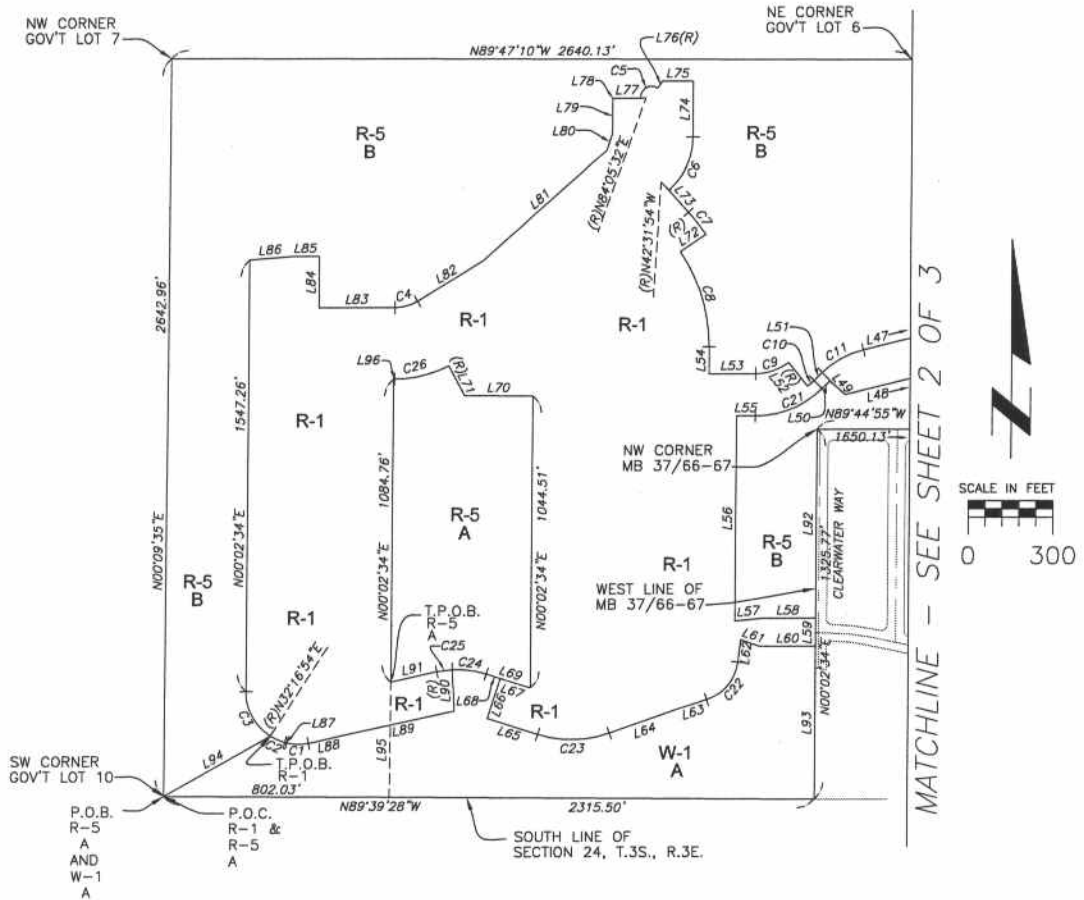
AGENDA NO.

STOP THE SS...  
RECEIVED W/...  
MAY 16 2004

2.50



SEC. 19, T. 3 S., R. 4 E., S.B.B. & M.  
 AND SEC. 24, T. 3 S., R. 3 E., S.B.B. & M.



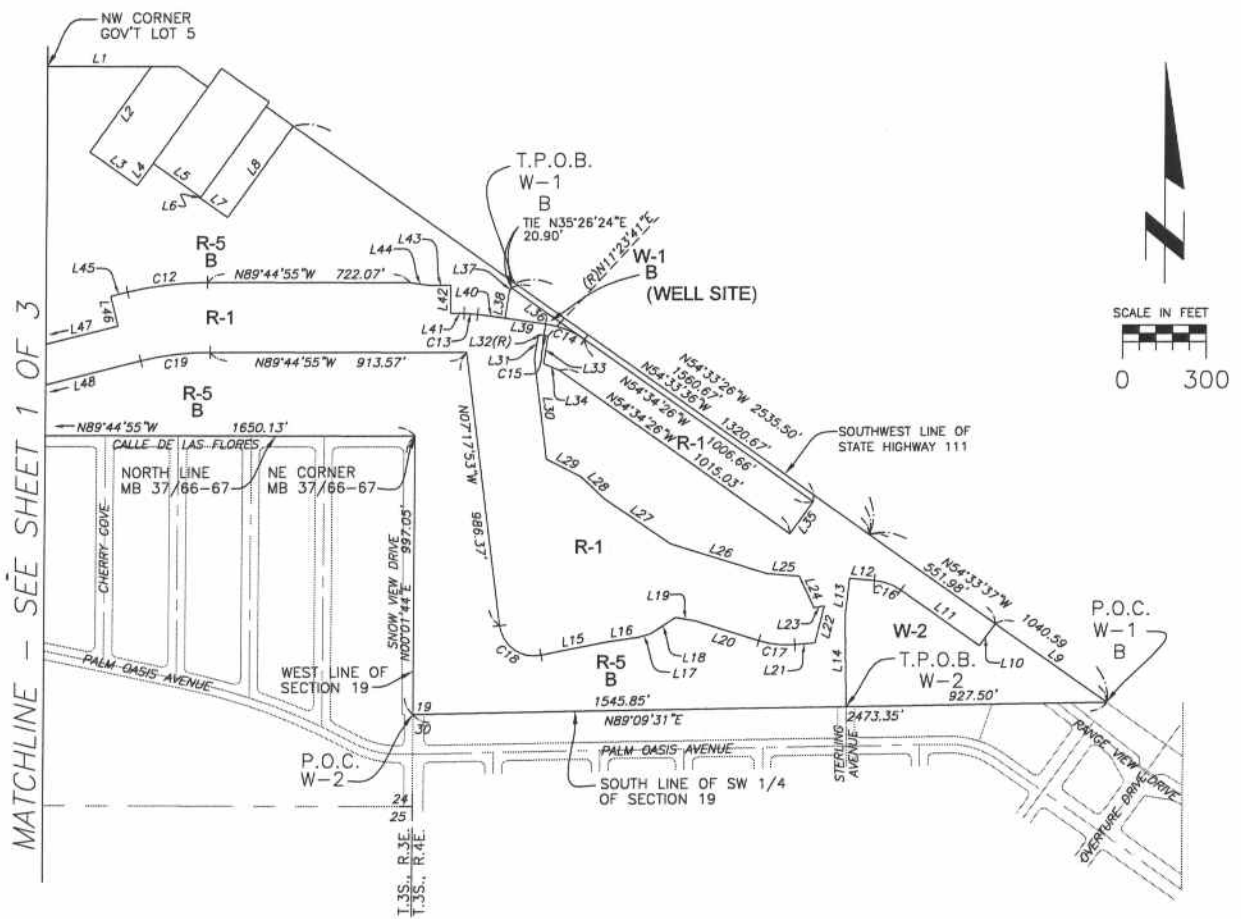
LEGEND

R-1	ONE-FAMILY DWELLINGS
R-5	OPEN AREA COMBINING ZONE RESIDENTIAL DEVELOPMENTS
W-1	WATERSHED & CONSERVATION AREAS
W-2	CONTROLLED DEVELOPMENT

MAP NO. 10.045  
 CHANGE OF OFFICAL ZONING PLAN  
 CATHEDRAL CITY/PALM DESERT DISTRICT

CHANGE OF ZONE CASE NO. 6076  
 AMENDING ORDINANCE 348  
 ADOPTED BY ORDINANCE NO. 348.4207  
 ON JULY 27, 2004  
 RIVERSIDE COUNTY BOARD OF SUPERVISORS

SEC. 19, T. 3 S., R. 4 E., S.B.B. & M.  
AND SEC. 24, T. 3 S., R. 3 E., S.B.B. & M.



LEGEND

R-1	ONE-FAMILY DWELLINGS
R-5	OPEN AREA COMBINING ZONE RESIDENTIAL DEVELOPMENTS
W-1	WATERSHED & CONSERVATION AREAS
W-2	CONTROLLED DEVELOPMENT

MAP NO. 2.2086  
CHANGE OF OFFICAL ZONING PLAN  
CATHEDRAL CITY/PALM DESERT DISTRICT

CHANGE OF ZONE CASE NO. 6076  
AMENDING ORDINANCE 348  
ADOPTED BY ORDINANCE NO. 348.4207  
ON JULY 27, 2004  
RIVERSIDE COUNTY BOARD OF SUPERVISORS

SEC. 19, T. 3 S., R. 4 E., S.B.B. & M.  
AND SEC. 24, T. 3 S., R. 3 E., S.B.B. & M.

LINE TABLE		
NO.	BEARING	LENGTH
L1	N89°41'19"W	370.21'
L2	N35°32'20"E	373.67'
L3	N54°26'58"W	208.35'
L4	N35°32'20"E	97.79'
L5	N54°33'36"W	209.13'
L6	N39°19'53"E	3.35'
L7	N54°32'23"W	121.23'
L8	N35°23'16"E	400.22'
L9	N54°33'37"W	488.60'
L10	N35°27'52"E	95.91'
L11	N54°31'23"W	344.12'
L12	N85°08'47"W	89.03'
L13	N06°40'33"E	130.93'
L14	N00°51'21"W	330.74'
L15	N78°40'50"E	242.92'
L16	N82°25'40"E	106.40'
L17	N74°14'35"E	48.17'
L18	N56°38'55"E	106.01'
L19	N79°55'22"W	73.53'
L20	N72°36'50"W	236.13'
L21	N85°13'40"E	72.02'
L22	N14°19'23"E	135.98'
L23	N79°49'02"E	37.43'
L24	N25°15'47"W	126.36'
L25	N85°41'42"W	116.86'
L26	N72°36'50"W	360.72'
L27	N55°44'31"W	288.00'
L28	N46°42'28"W	112.96'
L29	N63°03'11"W	139.39'
L30	N07°17'53"W	362.82'
L31	N08°25'31"E	89.77'
L32(R)	N81°34'29"W	20.52'
L33	N08°25'31"E	99.91'
L34	N67°00'22"W	61.54'
L35	N35°25'34"E	141.00'
L36	N54°34'26"W	320.94'
L37	N35°26'24"E	14.00'
L38	N08°25'31"E	98.30'
L39	N81°34'29"W	148.80'
L40	N81°34'29"W	99.56'
L41	N89°44'55"W	48.86'
L42	N00°15'05"E	100.00'
L43	N89°44'55"W	72.00'
L44	N81°50'29"W	72.69'
L45	N75°57'51"E	62.42'
L46	N14°02'09"W	110.00'
L47	N75°57'51"E	438.67'
L48	N75°57'51"E	589.95'
L49	N46°45'56"W	73.43'
L50	N45°38'40"E	40.76'

LINE TABLE		
NO.	BEARING	LENGTH
L51	N45°38'40"E	40.76'
L52	N38°21'44"W	110.00'
L53	N89°57'26"W	166.13'
L54	N00°02'34"E	96.87'
L55	N89°57'26"W	66.13'
L56	N00°02'34"E	733.54'
L57	N84°34'11"E	91.42'
L58	N89°57'26"W	197.00'
L59	N00°02'34"E	100.00'
L60	N89°57'26"W	197.00'
L61	N70°38'59"W	73.90'
L62	N06°28'56"E	80.92'
L63	N72°00'48"E	104.57'
L64	N70°23'28"E	280.88'
L65	N72°23'48"W	189.20'
L66	N17°36'12"E	151.00'
L67	N72°23'48"W	112.37'
L68	N72°23'48"W	53.01'
L69	N72°23'48"W	165.38'
L70	N89°22'23"W	245.16'
L71	N28°01'07"W	121.41'
L72	N55°51'57"E	110.00'
L73	N42°15'35"W	105.15'
L74	N00°02'34"E	197.67'
L75	N89°57'26"W	110.00'
L76(R)	N34°55'08"E	28.83'
L77	N89°57'26"W	94.79'
L78	N60°14'49"E	6.01'
L79	N00°05'20"E	123.57'
L80	N18°32'36"E	61.28'
L81	N47°44'25"E	588.76'
L82	N58°25'25"E	275.67'
L83	N89°57'26"W	270.16'
L84	N00°02'34"E	183.50'
L85	N90°00'00"W	98.57'
L86	N85°39'34"E	148.86'
L87	N74°59'15"W	7.28'
L88	N77°25'58"E	145.64'
L89	N77°29'13"E	384.54'
L90	N03°05'46"W	148.40'
L91	N77°29'13"E	167.60'
L92	N00°02'34"E	677.32'
L93	N00°02'34"E	548.45'
L94	N60°18'58"E	435.69'
L95	N00°20'32"E	413.55'
L96	N89°57'26"W	3.16'

CURVE TABLE				
NO.	RADIUS	DELTA	TANGENT	LENGTH
C1	160.50'	27°34'46"	39.39'	77.26'
C2	189.00'	17°16'09"	28.70'	56.97'
C3	189.00'	57°45'40"	104.25'	190.54'
C4	153.00'	31°37'09"	43.32'	84.43'
C5	38.50'	130°49'36"	84.14'	87.91'
C6	280.00'	47°25'32"	114.20'	215.21'
C7	717.00'	8°07'32"	50.93'	101.68'
C8	607.00'	34°10'37"	186.60'	362.08'
C9	190.00'	38°24'18"	66.17'	127.36'
C10	300.00'	5°59'36"	15.70'	31.38'
C11	320.50'	30°19'11"	86.84'	169.60'
C12	1151.00'	14°17'14"	144.26'	287.01'
C13	341.00'	8°10'26"	24.36'	48.65'
C14	320.50'	27°00'04"	76.95'	151.04'
C15	279.50'	2°58'10"	7.24'	14.49'
C16	190.50'	30°37'24"	52.16'	101.82'
C17	337.00'	22°09'30"	65.99'	130.33'
C18	125.00'	94°01'17"	134.10'	205.12'
C19	1000.00'	14°17'14"	125.33'	249.36'
C21	341.00'	44°23'54"	139.15'	264.24'
C22	160.50'	65°31'52"	103.30'	183.57'
C23	399.00'	37°12'45"	134.33'	259.14'
C24	341.00'	20°41'58"	62.28'	123.19'
C25	341.00'	9°25'02"	28.09'	56.05'
C26	410.00'	28°03'41"	102.46'	200.80'

MAP NO. 10.045  
CHANGE OF OFFICAL ZONING PLAN  
CATHEDRAL CITY/PALM DESERT DISTRICT

CHANGE OF ZONE CASE NO. 6076  
AMENDING ORDINANCE 348  
ADOPTED BY ORDINANCE NO. 348.4207  
ON JULY 27, 2004  
RIVERSIDE COUNTY BOARD OF SUPERVISORS