

SUBMITTAL TO THE BOARD OF SUPERVISORS
COUNTY OF RIVERSIDE, STATE OF CALIFORNIA

194A



FROM: County Counsel

SUBMITTAL DATE: August 2, 2004

SUBJECT: Ordinance No. 348.4189

RECOMMENDED MOTION: That the Board of Supervisors adopt Ordinance No. 348.4189 amending the zoning in the Winchester Area shown on Map No. 2.2073 Change of Zone Case No. 6831.

BACKGROUND: Change of Zone Case No. 6831 was approved by the Board of Supervisors on June 22, 2004.

Katherine A. Lind
KATHERINE A. LIND
Deputy County Counsel

C.E.O. RECOMMENDATION: **APPROVE**

County Executive Office Signature

Sally A. Deane

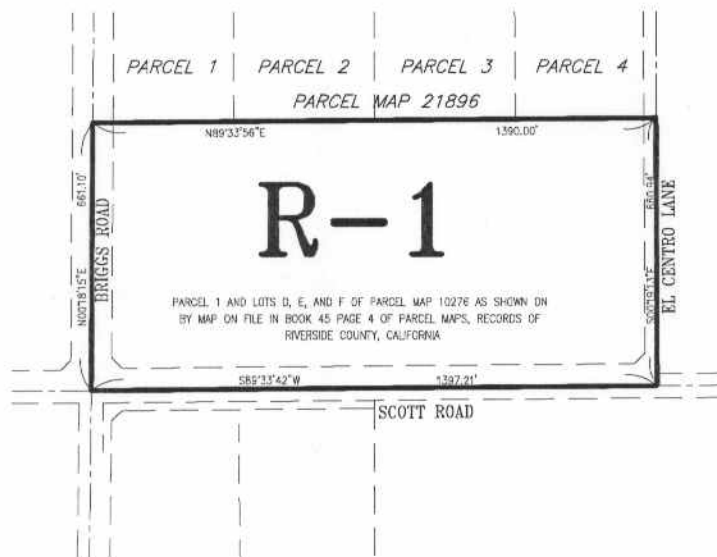
Policy

Consent

Department Recommendation:
Per Executive Office:

WINCHESTER AREA

SECTION 18, TOWNSHIP 6 SOUTH, RANGE 2 WEST S.B.B. & M.



LEGEND

R-1

ONE FAMILY DWELLINGS
7,200 SQ. FT. MIN. LOT AREA

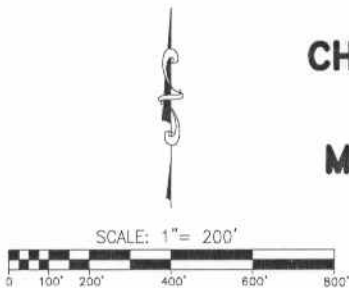
MAP NO. 2.2073

CHANGE OF OFFICIAL ZONING PLAN AMENDING MAP NO. 2, ORDINANCE NO. 348

CHANGE OF ZONE CASE NO. 6831

ADOPTED BY ORDINANCE NO. 348.4189
AUGUST 24, 2004

RIVERSIDE COUNTY BOARD OF SUPERVISORS



ASSESSOR PARCEL NUMBER:
466-220-017

