

SUBMITTAL TO THE BOARD OF SUPERVISORS
COUNTY OF RIVERSIDE, STATE OF CALIFORNIA

193A



FROM: County Counsel
SUBJECT: Ordinance No. 348.4214

SUBMITTAL DATE: August 10, 2004

RECOMMENDED MOTION: That the Board of Supervisors adopt Ordinance No. 348.4214 amending the zoning in the Lake Mathews District shown on Map No. 36.050 Change of Zone Case No. 6728.

BACKGROUND: Change of Zone Case No. 6728 was approved by the Board of Supervisors on September 23, 2003.

Katherine A. Lind
KATHERINE A. LIND
Deputy County Counsel

C.E.O. RECOMMENDATION: **APPROVE**

County Executive Office Signature

Shelly A. Deaux

Policy
 Policy

Consent
 Consent

Department Recommendation:
Per Executive Office:

RECEIVED RIVERSIDE COUNTY
AUG 12 10 58 AM '04
COUNTY CLERK'S OFFICE

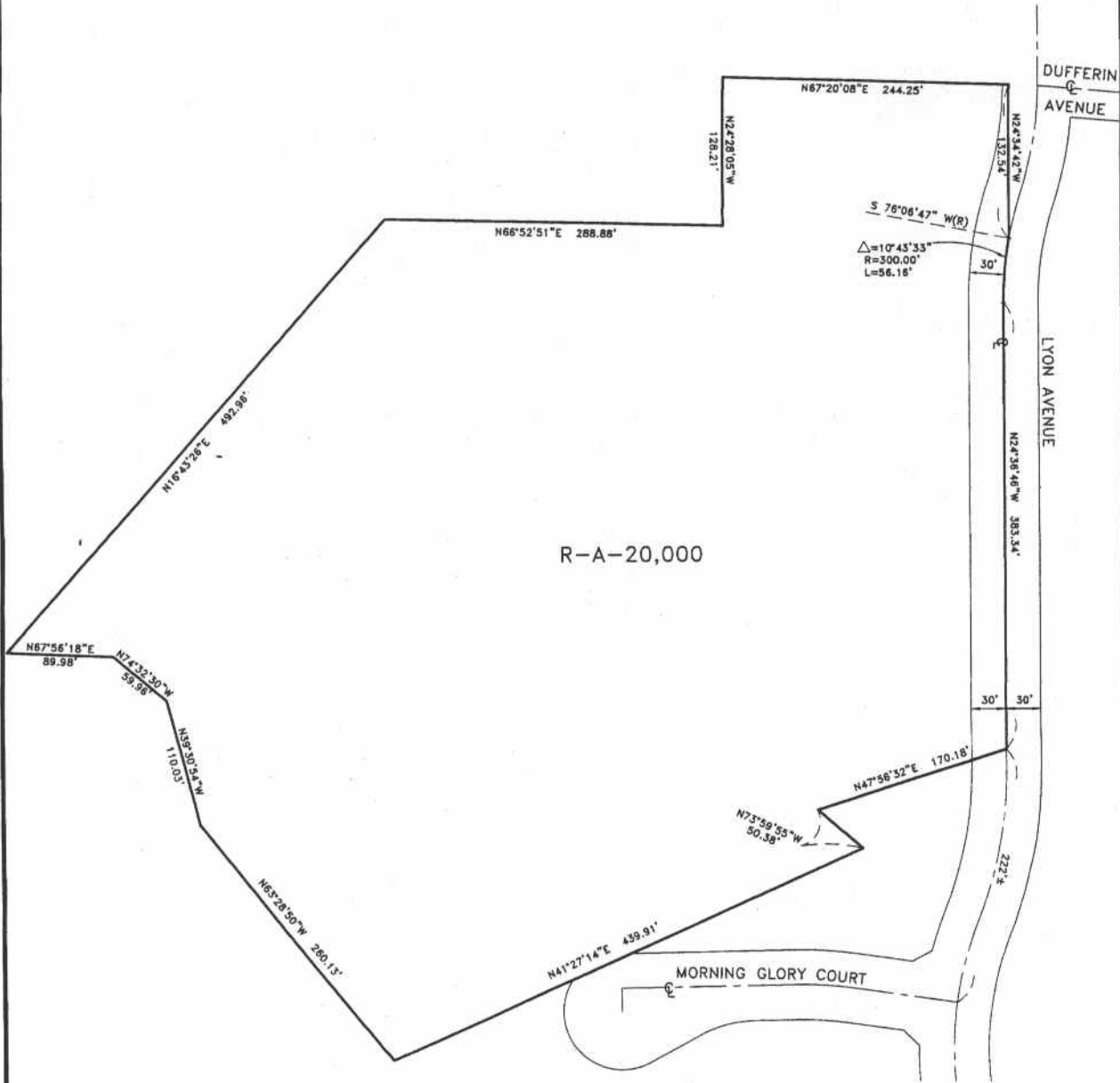
Prev. Agn. ref.

Dist. 1

AGENDA NO.

2.7

A PORTION OF THE RANCHO EL SOBRANTE DE SAN JACINTO
IN SECTION 25, TOWNSHIP 3 SOUTH, RANGE 6 WEST



R-A-20,000

LEGEND

R-A-20,000 RESIDENTIAL AGRICULTURE - 20,000 SQ. FT. MINIMUM

MAP NO. 36.050

CHANGE OF OFFICIAL ZONING PLAN

LAKE MATHEWS DISTRICT

CHANGE OF ZONE CASE NO. 6728

AMENDING ORDINANCE NO. 348

ADOPTED BY ORDINANCE NO. 348.4214

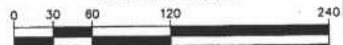
AUGUST 24, 2004

RIVERSIDE COUNTY BOARD OF SUPERVISORS



NORTH
1"=60'

GRAPHIC SCALE



(IN FEET)
1 inch = 60 ft.