

FO9A

**SUBMITTAL TO THE BOARD OF SUPERVISORS  
COUNTY OF RIVERSIDE, STATE OF CALIFORNIA**



**FROM:** County Counsel  
**SUBJECT:** Ordinance No. 348.4215

**SUBMITTAL DATE:** August 17, 2004

**RECOMMENDED MOTION:** That the Board of Supervisors adopt Ordinance No. 348.4215 amending the zoning in the Antelope Valley Area shown on Map No. 2.2087 Change of Zone Case No. 6843.

**BACKGROUND:** Change of Zone Case No. 6843 was approved by the Board of Supervisors on June 29, 2004.

*Katherine A. Lind*  
KATHERINE A. LIND  
Deputy County Counsel

**C.E.O. RECOMMENDATION:**

**APPROVE**

County Executive Office Signature

*Julie A. Bean*

Policy

Policy

Consent

Consent

Department Recommendation:  
Per Executive Office:

Prev. Agn. ref.

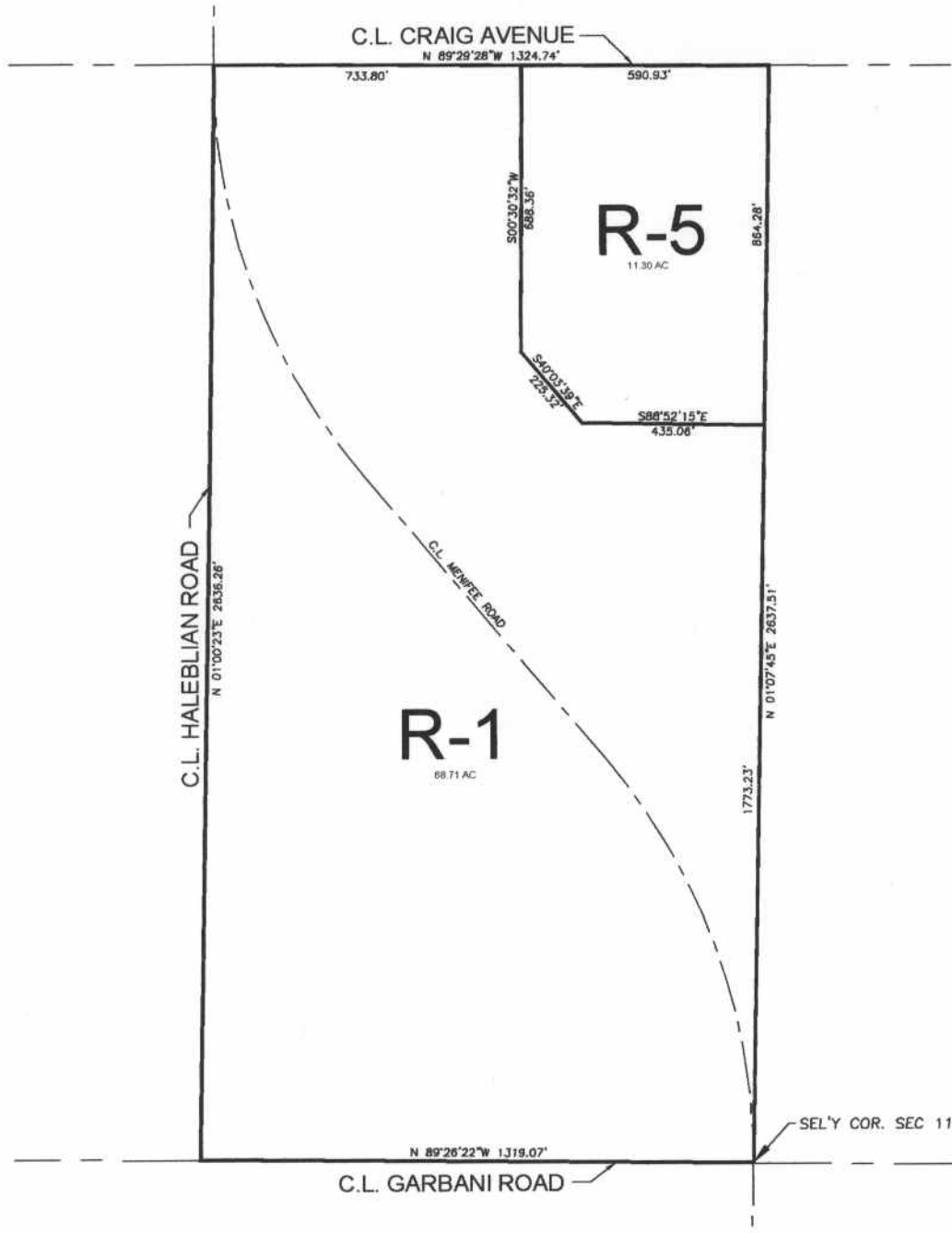
Dist. 3

AGENDA NO.

RECEIVED BY ALPINE COUNTY EX. OFFICE  
AUG 22 10 22 AM '04  
COUNTY OF RIVERSIDE



**ANTELOPE AREA**  
**SW 1/4, SEC. 11 T. 6S, R. 3W S.B.B.&M.**



**LEGEND:**

- |     |  |
|-----|--|
| R-1 | ONE-FAMILY DWELLINGS                             |
| R-5 | OPEN AREA COMBINING ZONE RESIDENTIAL DEVELOPMENT |

MAP NO. 2.2087  
**CHANGE OF OFFICIAL ZONING PLAN  
 AMENDING  
 MAP NO. 2 ORDINANCE NO. 348**

CHANGE OF ZONE CASE NO. 6843  
 ADOPTED BY ORDINANCE NO. 348.4215  
 AUGUST 24, 2004

RIVERSIDE COUNTY BOARD OF SUPERVISORS



1 inch = 180 ft.