

SUBMITTAL TO THE BOARD OF SUPERVISORS  
COUNTY OF RIVERSIDE, STATE OF CALIFORNIA

935A



**FROM:** County Counsel  
**SUBJECT:** Ordinance No. 348.4217

**SUBMITTAL DATE:** August 18, 2004

**RECOMMENDED MOTION:** That the Board of Supervisors adopt Ordinance No. 348.4217 amending the zoning in the Romoland Area shown on Map No. 2.2089 Change of Zone Case No. 6875.

**BACKGROUND:** Change of Zone Case No. 6875 was approved by the Board of Supervisors on August 10, 2004.

*Katherine A. Lind*  
KATHERINE A. LIND  
Deputy County Counsel

**C.E.O. RECOMMENDATION: APPROVE**

*Lise Brandt*

County Executive Office Signature

Policy  
 Policy

Consent  
 Consent

Department Recommendation:  
Per Executive Office:

2004 FEB -8 AM 11:13  
RECEIVED BY RIVERSIDE COUNTY

Prev. Agn. ref.

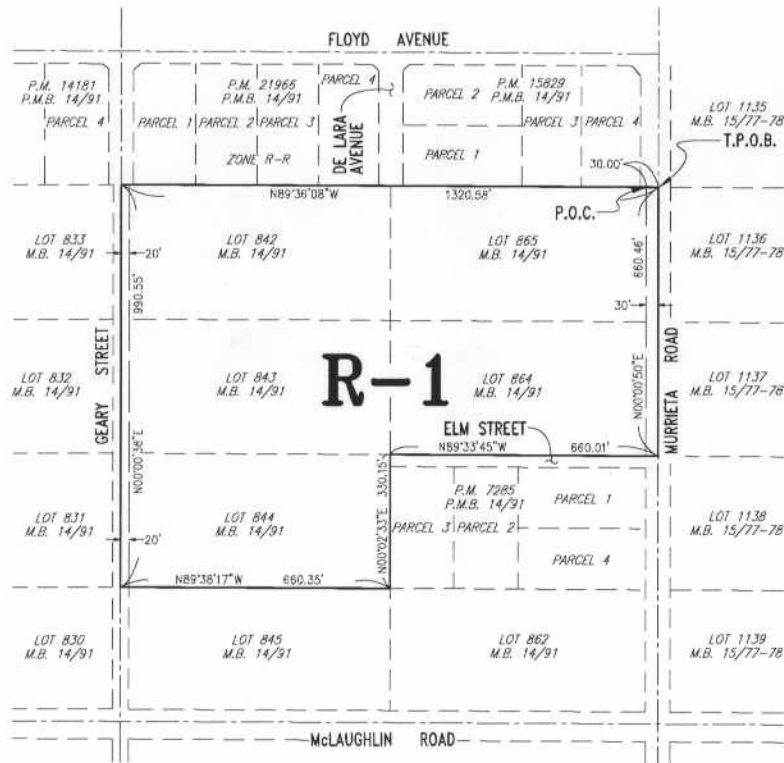
Dist. 3

AGENDA NO.



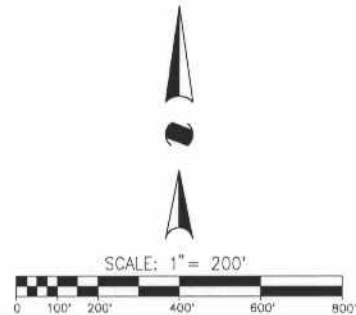
# ROMOLAND AREA

## SECTIONS 17, T5S, R3 W, S.B.B. & M.



### LEGEND

<b>R-1</b>	ONE FAMILY DWELLINGS 7,200 SQ. FT. MINIMUM LOT AREA
------------	--



MAP NO. 2.2089

## CHANGE OF OFFICIAL ZONING PLAN AMENDING MAP NO. 2, ORDINANCE NO. 348

CHANGE OF ZONE CASE NO. 06875  
ADOPTED BY ORDINANCE NO. 348.4217  
SEPTEMBER 14, 2004

ASSESSOR PARCEL NUMBER:  
330-210-003, 004, 005 & 008



RIVERSIDE COUNTY BOARD OF SUPERVISORS