

SUBMITTAL TO THE BOARD OF SUPERVISORS  
COUNTY OF RIVERSIDE, STATE OF CALIFORNIA

753A



FROM: County Counsel

SUBMITTAL DATE: September 22, 2004

SUBJECT: Ordinance No. 348.4234

**RECOMMENDED MOTION:** That the Board of Supervisors adopt Ordinance No. 348.4234 amending the zoning in the Rancho California Area shown on Map No. 2.2098 Change of Zone Case No. 6740.

**BACKGROUND:** Change of Zone Case No. 6740 was approved by the Board of Supervisors on May 18, 2004.

*Katherine A. Lind*  
KATHERINE A. LIND  
Deputy County Counsel

C.E.O. RECOMMENDATION:

**APPROVE**

*Lisa Brandt*

County Executive Office Signature

Policy  
 Policy

Consent  
 Consent

Department Recommendation:  
Per Executive Office:

RECEIVED  
COUNTY OF RIVERSIDE  
OFFICE OF THE COUNTY EXECUTIVE  
SEP 23 2004 11:13 AM

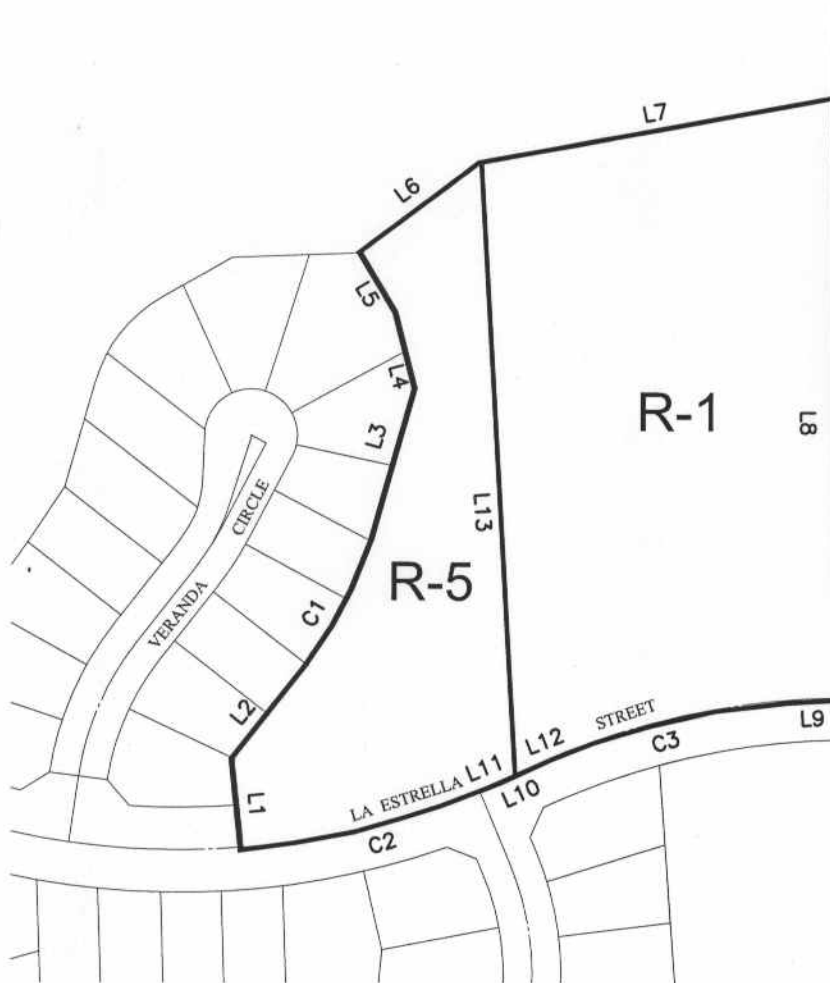
Prev. Agn. ref.

Dist. 3

AGENDA NO.



RANCHO CALIFORNIA AREA  
 SEC. 31 T. 6S. R. 3W S. B. B. & M.

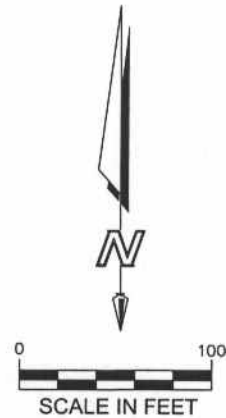


LINE DATA		
LINE	BEARING	DISTANCE
L1	N04°47'42"W	91.47'
L2	N38°08'48"E	107.05'
L3	N16°16'28"E	153.89'
L4	N14°14'57"W	81.64'
L5	N30°17'58"W	72.52'
L6	N52°56'56"E	152.78'
L7	N78°27'50"E	371.71'
L8	N00°23'43"W	620.37'
L9	N88°44'30"E	0.28'
L10	N65°53'34"E	50.00'
L11	N65°53'34"E	24.17'
L12	N65°53'34"E	25.83'
L13	N03°19'08"W	633.59'

CURVE TABLE			
CURVE	RADIUS	DELTA	DISTANCE
C1	452.00'	21°52'20"	172.55'
C2	800.00'	19°18'44"	269.65'
C3	800.00'	22°50'56"	319.03'

LEGEND

- R-1 ONE FAMILY DWELLINGS
- R-5 OPEN AREA COMBINING ZONE RESIDENTIAL DEVELOPMENTS



MAP NO. 2.2098  
 CHANGE OF OFFICIAL ZONING PLAN  
 AMENDING  
 MAP NO. 2, ORDINANCE NO.348  
 CHANGE OF ZONE CASE NO. 6740  
 ADOPTED BY ORDINANCE NO. 348.4234  
 OCTOBER 5, 2004  
 RIVERSIDE COUNTY BOARD OF SUPERVISORS