

SUBMITTAL TO THE BOARD OF SUPERVISORS
COUNTY OF RIVERSIDE, STATE OF CALIFORNIA

209 B



FROM: TLMA - Transportation Department.

SUBMITTAL DATE:

October 25, 2004

SUBJECT: Accepting the offers of dedication of portions of utility easements in the Garner Valley area, Third Supervisorial District

RECOMMENDED MOTION: Adopt Resolution No. 2004-061, accepting offers of dedication of portions of utility easements for public use, but not as part of the County Maintained Road System.

BACKGROUND: Lake Hemet Municipal Water District has requested the acceptance of these easements to enable their company to install and maintain their facilities.

Departmental Concurrence

REVIEWED BY EXECUTIVE OFFICE

[Signature]
DATE 10/26/04

FORM APPROVED
COUNTY COUNSEL

SEP 27 2004

BY *[Signature]*

Attachments: Resolution No. 2004-061.
Exhibit "A"

[Signature]
George A. Johnson
Director of Transportation

Dept't Recomm.: Consent Policy
Per Exec. Ofc.: Consent Policy

Prev. Agn. Ref.:

District: 3

Agenda Number:

2.8

2
3 **RESOLUTION NO 2004-061**

4
5 ACCEPTING OFFERS OF DEDICATION FOR PORTIONS OF UTILITY EASEMENTS,
6 IN THE GARNER VALLEY AREA, FOR PUBLIC USE.

7 (Third Supervisorial District)

8
9 **WHEREAS**, the hereinafter described utility easements were offered for public
10 use by the maps hereinafter-referred to, which offers of dedication have not been accepted for public
11 use by the County, now, therefore;

12
13 **BE IT RESOLVED, DETERMINED AND ORDERED** by the Board of Supervisors of the
14 County of Riverside, State of California, in regular session assembled on November 2 ,
15 2004, that this Board accepts the offers of dedication and recognizes that said utility easements are
16 public easements open for use by the general public;

17
18 **BE IT FURTHER RESOLVED, DETERMINED AND ORDERED**, that this acceptance is
19 for the purpose of vesting title in the County of Riverside on behalf of the public for public utility
20 uses, and is not an acceptance of the easements into the County Maintained Road System pursuant to
21 Section 941 of the Streets and Highways Code and that said easements will not become part of the
22 County Maintained Road System unless subsequently accepted into said Maintained Road System by
23 a resolution adopted by this Board.

24
25 Said easements are in the County of Riverside, State of California, and are described
26 as follows:

27 ///

1 **RESOLUTION No. 2004-061**

2
3 **Utility Easements**

4
5 Those portions of the utility easements dedicated to public use for access, construction, and
6 maintenance of water lines and appurtenances more particularly described as follows:

7
8 A 10-foot wide “waterline easement” across lots 15 and 16, and a 15-foot wide “water easement”
9 across lots 62 and 63, both, as dedicated on Tract 4517, recorded in Map Book 75, Pages 63 through
10 75 inclusive, official records, Riverside County, California, and as shown on sheet 2 and sheet 3,
11 respectively, on the attached Exhibit “A”.

12
13 A 15-foot “water easement” across lot 45, a 15-foot wide “water easement” across lots 32, 33, and 35
14 along with the 100-foot by 165-foot “water easement” within lot 35, all as dedicated on Tract Map
15 4498, recorded in Map Book 74, Pages 9 through 20 inclusive, official records of said county and as
16 shown on sheets 3, 4, and 5, respectively, on the attached
17 Exhibit “A”.

18
19 A 15-foot wide “waterline easement” across lots 14 and 15 as dedicated on Tract Map 4074-4
20 recorded in Map Book 78, Pages 47 through 58 inclusive, official records of said county and as
21 shown on sheet 6 on the attached Exhibit “A”.

22
23 A 15-foot wide “water easement” across lots 27 and 28, a 15 foot wide “water easement” across lots
24 38 and 39, the 15 foot by 35 foot “water easement” across Lot “T”, a 10-foot wide “water easement”
25 across lot 35, the 10-foot wide “water easement” across Lot 36 between the southeasterly line thereof

1 **RESOLUTION No. 2004-061**

2
3 and the northwesterly line of the 80 foot by 80 foot parcel per Corporation Grant Deed to Lake Hemet
4 Municipal Water District, Instrument No. 87696, as recorded July 2, 1974, the 10-foot wide "water
5 easement" across lot 32 between Butterfly Peak Road and the southerly line of the 80 foot by 90 foot
6 parcel per Corporation Grant Deed to Lake Hemet Municipal Water District, Instrument No. 87697,
7 as recorded July 2, 1974, all as dedicated on and Tract Map 4074-5, recorded in Map Book 78, Pages
8 75 through 85 inclusive, official records of said county and as shown on sheets 6 through 10,
9 respectively, on the attached Exhibit "A".

10
11 A 20-foot wide "access easement" across lot 27 as dedicated on Tract Map 4074, recorded in Map
12 Book 78, Pages 86 through 97 inclusive, official records of said county and as shown on sheet 11 on
13 the attached Exhibit "A".

14
15 A 10-foot wide "water easement" across lot 21 as dedicated on Tract Map 4448, recorded in Map
16 Book 72, Pages 27 through 32 inclusive, official records of said county and as shown on sheet 12 on
17 the attached Exhibit "A".

18
19 **BE IT FURTHER RESOLVED, DETERMINED AND ORDERED** that the Clerk of the
20 Board shall cause a certified copy of this resolution to be recorded in the Office of the Recorder of
21 Riverside County, State of California.

22
23 EDH: rlj

24 W.O.# SU1020

FORM APPROVED
COUNTY COUNSEL

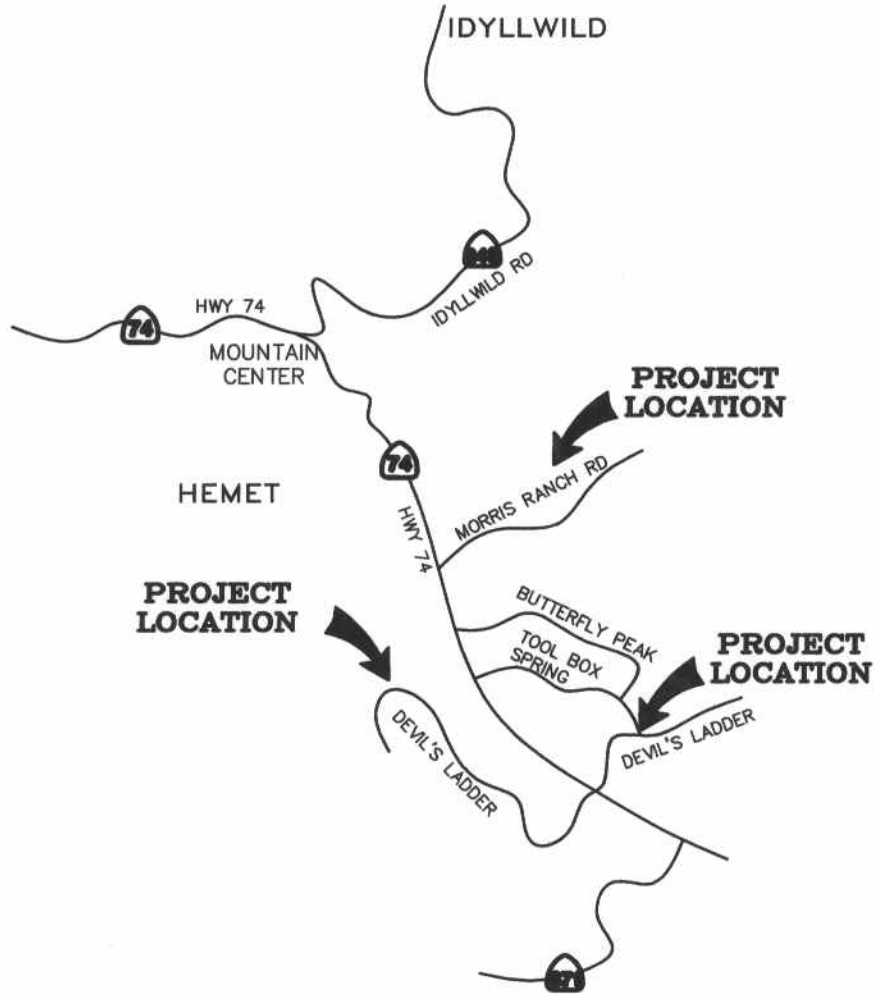
SEP 27 2004

BY Gordon V. Ubo

Exhibit "A"

Utility Easements

Vicinity Map



LOCATION MAP

NTS

- Sec. 1, 5 T.7S. R.3E.
- Sec. 36 T.6S. R.3E.
- Sec. 7 T.7S. R.4E.
- Sec. 31 T.6S. R.4E.
- Sec. 25 T.6S. R.3E.



THIS DOCUMENT REVIEWED BY
RIVERSIDE COUNTY SURVEYOR.
BY: *Edward O. Hood*
DATE: 10-7-2004

DRAWN BY: SMS
DATE: 2-06-04
M:\gomer valley pipeline\96006028.DWG
APPROVED BY:

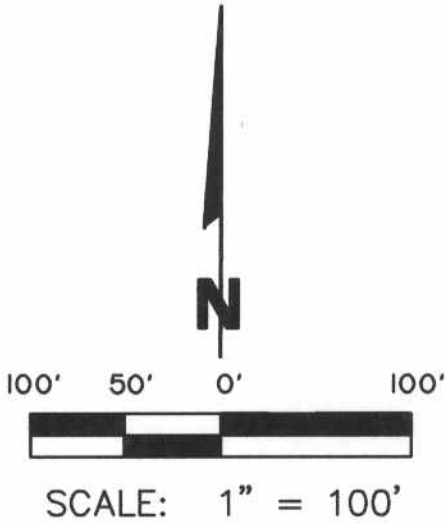


3550 E. Florida Avenue, Suite B
Hemet, California 92544
(909) 765-6622 Fax (909) 765-6621

Sheet No.
1 OF
12 SHEETS

Exhibit "A"

Utility Easements



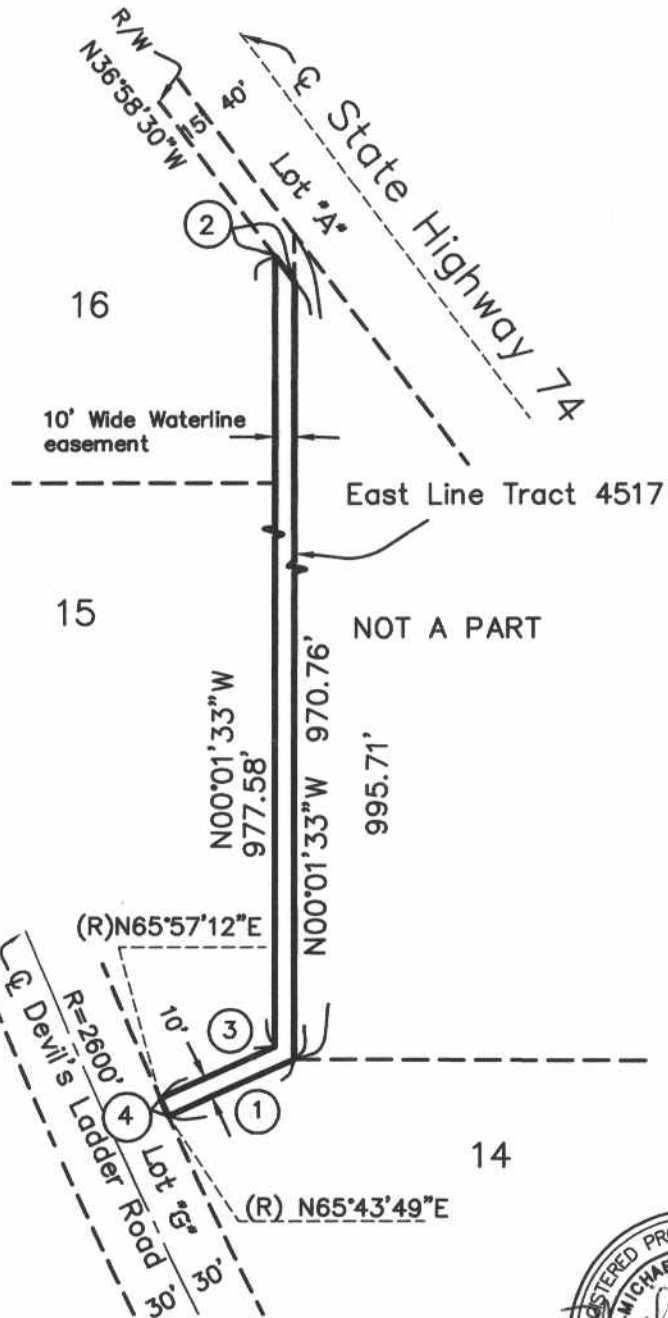
Tract 4517
MB 75/63-75

Data Table

- ① N65°43'49"E 71.52'
- ② N36°58'30"W 16.63'
- ③ S65°43'49"W 65.04'
- ④ Δ=00°13'23" L=10.00' R=2570

Note:

All data is of record per Tract Map 4517



Sec. 36 T.6S. R.3E.

DRAWN BY: SMS
 DATE: 2-06-04
 M:\garner valley pipeline\96006028.DWG
 APPROVED BY:

RE ENGINEERING
RESOURCES
OF SOUTHERN CALIFORNIA, INC.

3550 E. Florida Avenue, Suite B
 Hemet, California 92544
 (909) 765-6622 Fax (909) 765-6621

Sheet No.
2 OF
12 SHEETS

Data Table

- ① N20°34'29"E 5.00'
- ② S30°19'30"W 5.04'
- ③ N18°04'51"E 4.97'
- ④ N20°34'29"E 10.00'

Exhibit "A"

Utility Easements

100' 50' 0' 100'



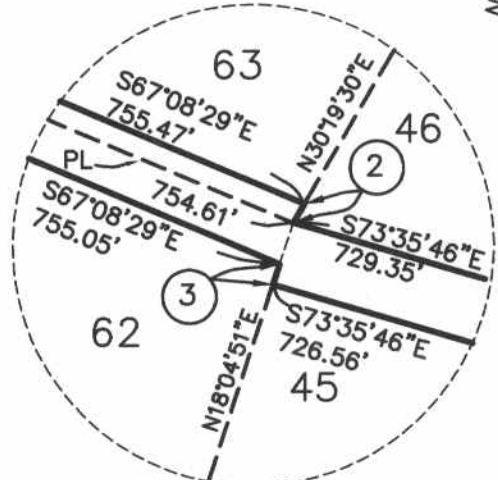
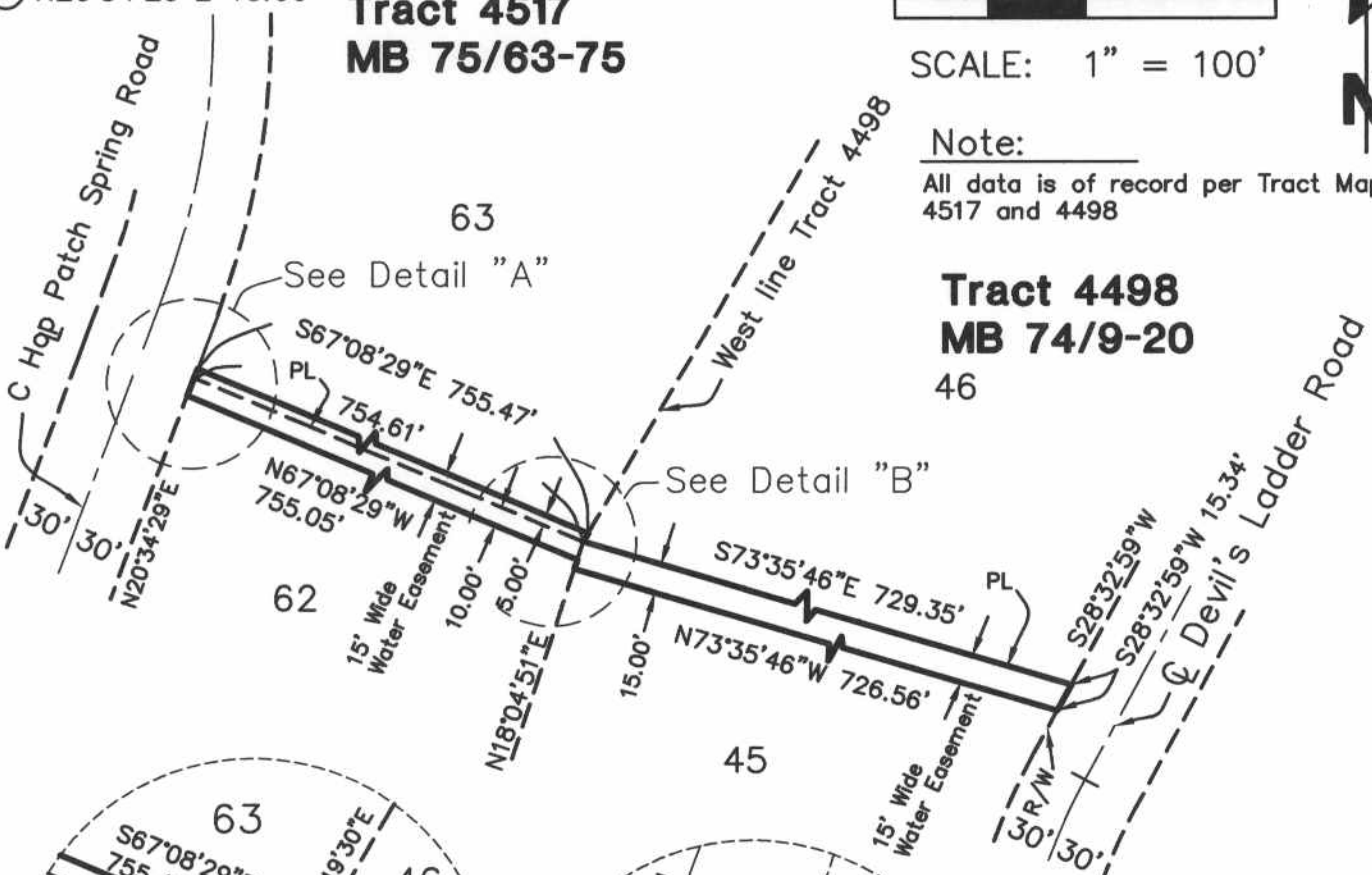
SCALE: 1" = 100'

Note:

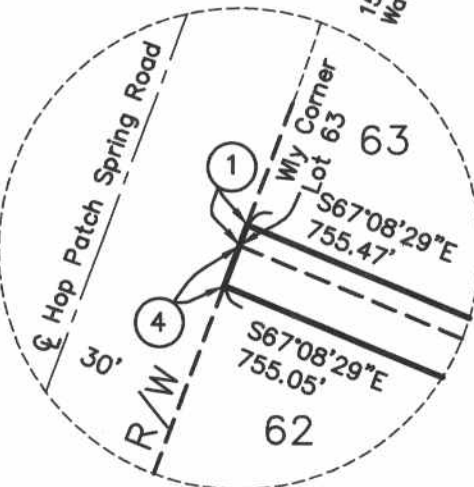
All data is of record per Tract Maps 4517 and 4498

Tract 4517
MB 75/63-75

Tract 4498
MB 74/9-20
46



Detail "B"
NTS



Detail "A"
NTS



Sec. 1 T.7S. R.3E.

DRAWN BY: SMS
DATE: 2-06-04
M:\garner valley pipeline\96008028.DWG
APPROVED BY:



3550 E. Florida Avenue, Suite B
Hemet, California 92544
(909) 765-6622 Fax (909) 765-6621

Sheet No.
3 OF
12 SHEETS

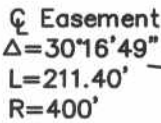
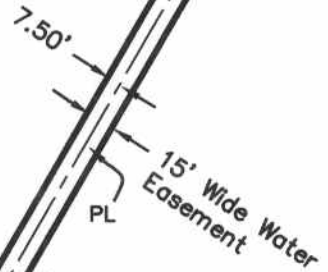
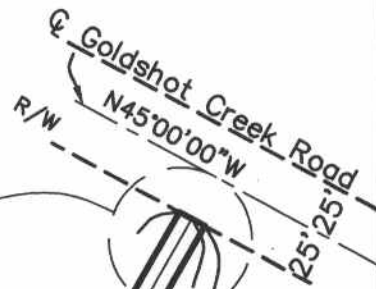
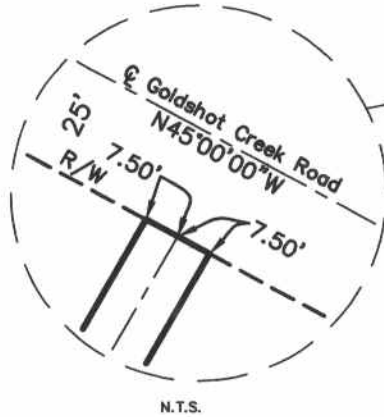
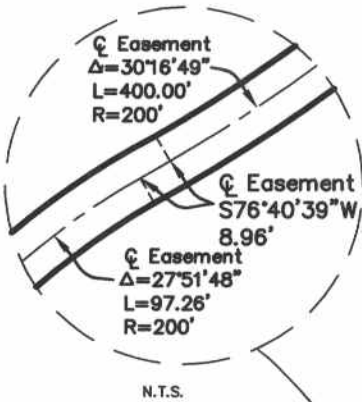
Exhibit "A" Utility Easements

Note:

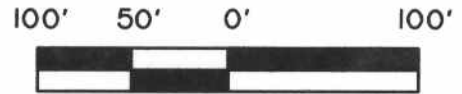
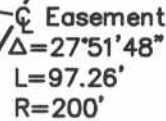
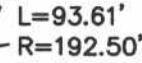
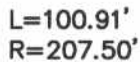
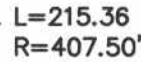
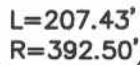
All data is of record per
Tract Map 4498

**Tract 4498
MB 74/9-20**

33



32



SCALE: 1" = 100'



Sec. 7 T.7S. R.4E.

Parcel 5,
See Sheet 5

$N22^{\circ}00'00''W$



35

DRAWN BY: SMS

DATE: 2-06-04

M:\gamer valley pipeline\96006028.DWG

APPROVED BY:

**ENGINEERING
RESOURCES**
OF SOUTHERN CALIFORNIA, INC.

3550 E. Florida Avenue, Suite B
Hemet, California 92544
(909) 765-6622 Fax (909) 765-6621

Sheet No.

4 OF

12 SHEETS

Exhibit "A" Utility Easements



**Tract 4498
MB 74/9-20**

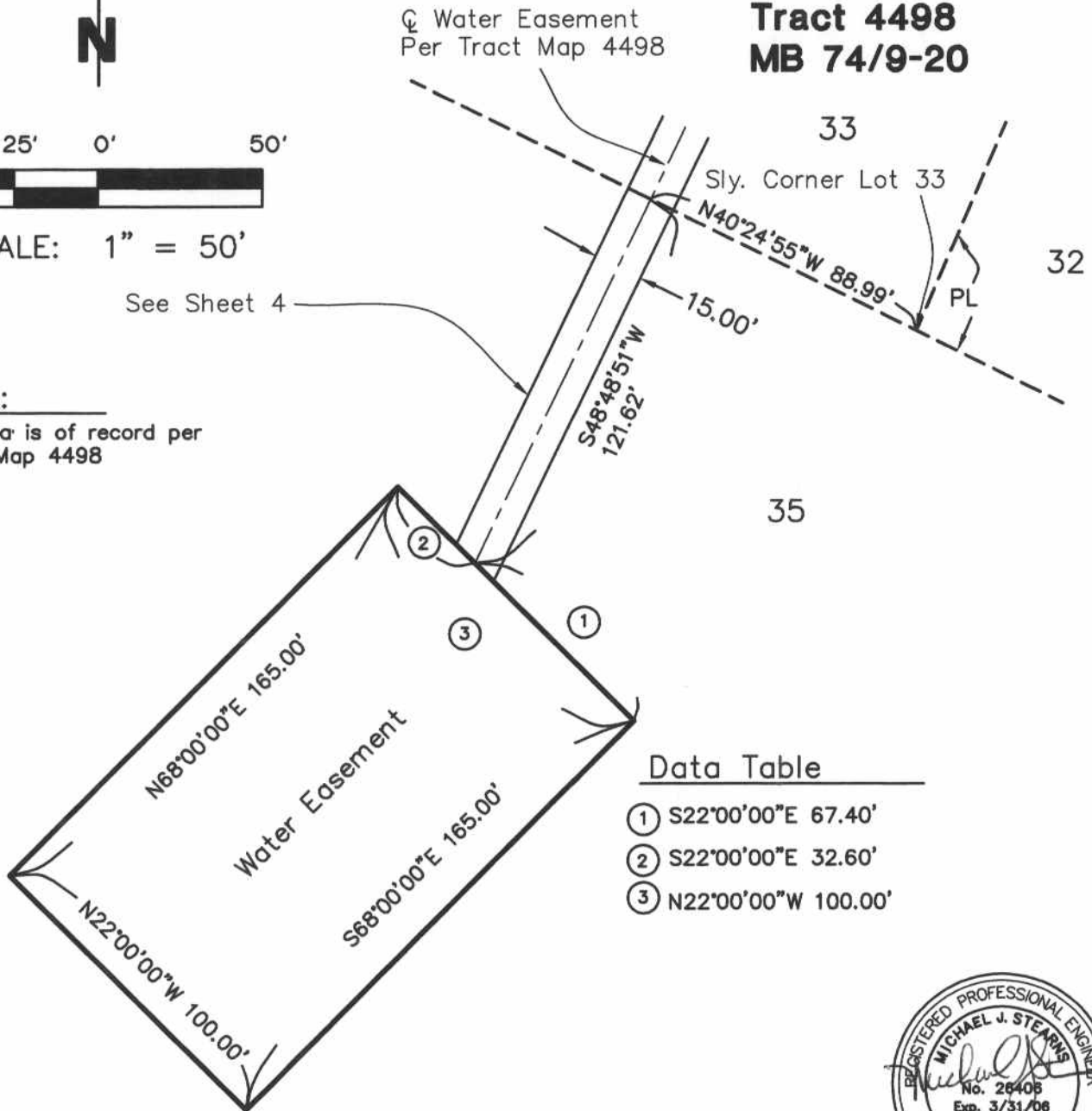


SCALE: 1" = 50'

See Sheet 4

Note:

All data is of record per
Tract Map 4498



Data Table

- ① S22°00'00"E 67.40'
- ② S22°00'00"E 32.60'
- ③ N22°00'00"W 100.00'



Sec. 7 T.7S. R.4E.

DRAWN BY: SMS

DATE: 2-06-04

M:\garner valley pipeline\96006028.DWG

APPROVED BY:

**ENGINEERING
RESOURCES**
OF SOUTHERN CALIFORNIA, INC.

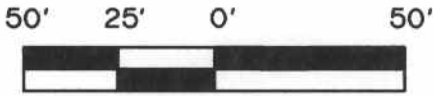
3550 E. Florida Avenue, Suite B
Hemet, California 92544
(909) 765-6622 Fax (909) 765-6621

Sheet No.

5 OF
12 SHEETS

Exhibit "A"

Utility Easements



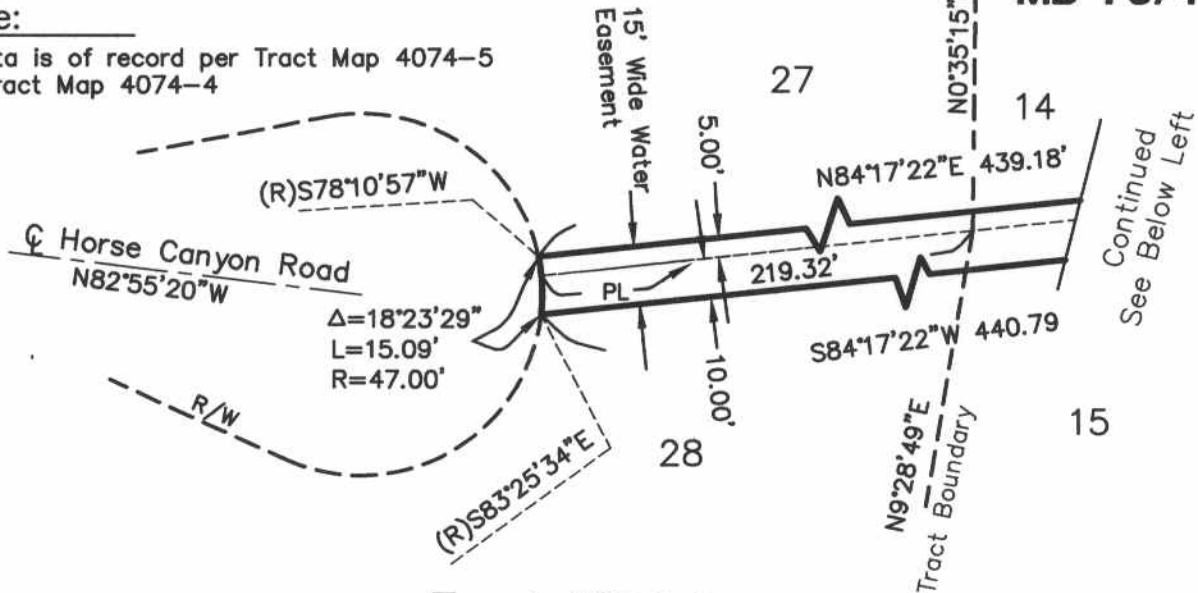
SCALE: 1" = 50'

Note:

All data is of record per Tract Map 4074-5 and Tract Map 4074-4

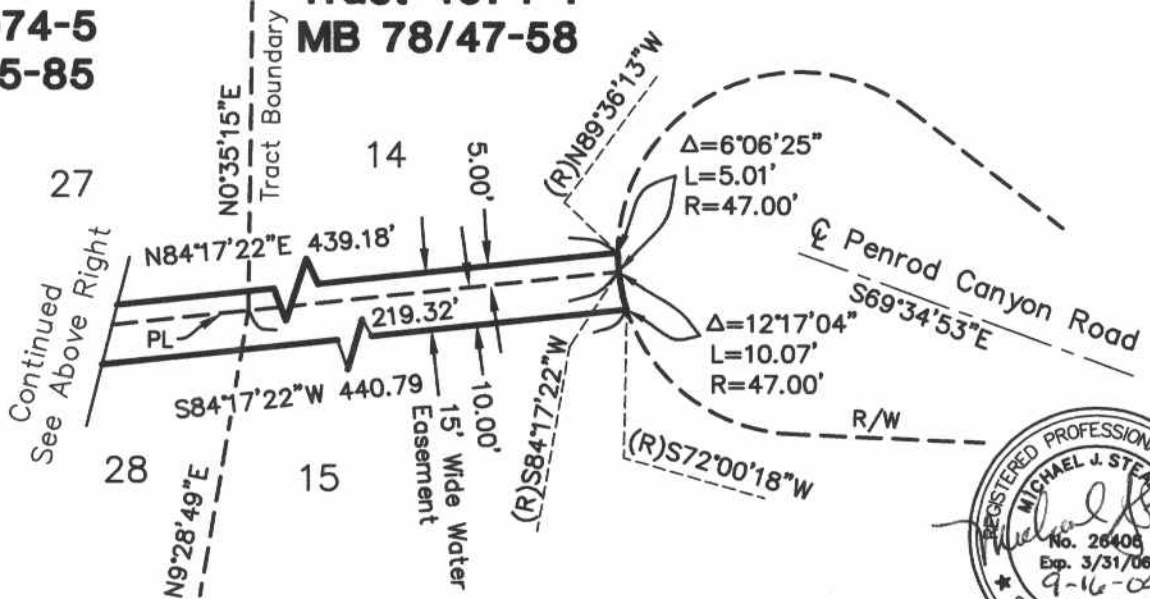
**Tract 4074-5
MB 75/75-85**

**Tract 4074-4
MB 78/47-58**



**Tract 4074-5
MB 75/75-85**

**Tract 4074-4
MB 78/47-58**



Sec. 36 T.6S. R.3E.

DRAWN BY: SMS

DATE: 2-06-04

l:\garner valley pipeline\96006028.DWG

APPROVED BY:

**ENGINEERING
RESOURCES**
OF SOUTHERN CALIFORNIA, INC.

3550 E. Florida Avenue, Suite B
Hemet, California 92544
(909) 765-6622 Fax (909) 765-6621

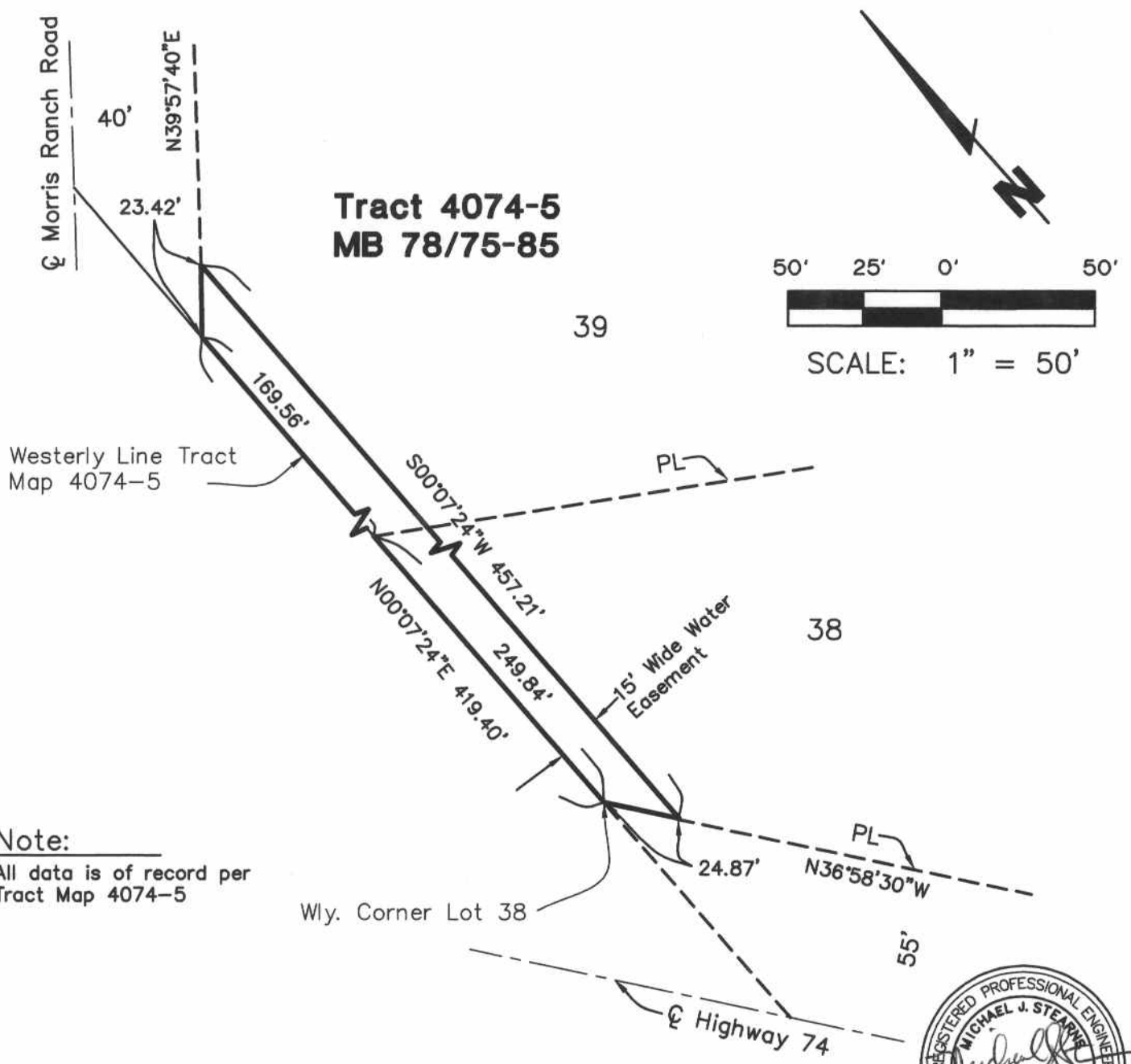
Sheet No.

6 OF

12 SHEETS

Exhibit "A"

Utility Easements



Note:
All data is of record per
Tract Map 4074-5



Sec. 25 T.6S. R.3E.

DRAWN BY: SMS

DATE: 2-06-04

M:\garner valley pipeline\96006028.DWG

APPROVED BY:

ENGINEERING
RESOURCES
OF SOUTHERN CALIFORNIA, INC.

3550 E. Florida Avenue, Suite B
Hemet, California 92544
(909) 765-6622 Fax (909) 765-6621

Sheet No.
7 OF
12 SHEETS

Exhibit "A"

Utility Easements



SCALE: 1" = 50'

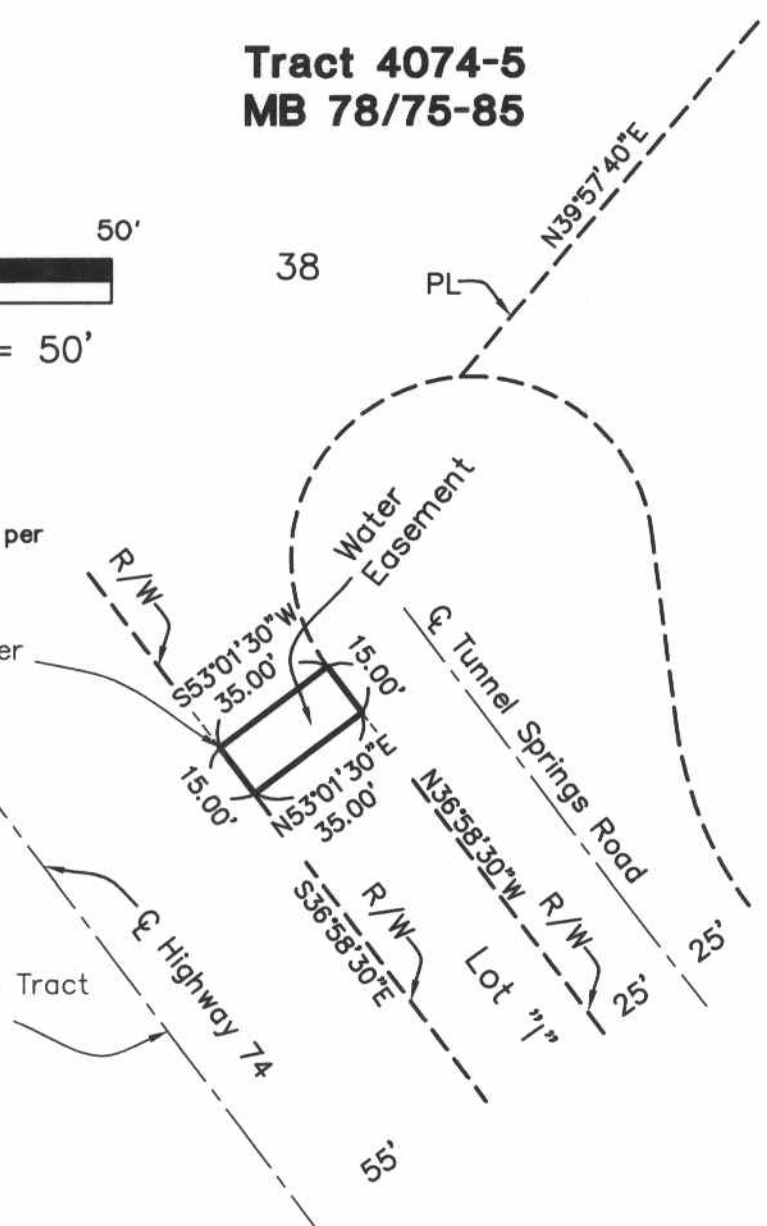
Tract 4074-5
MB 78/75-85

Note:

All data is of record per Tract Map 4074-5

Southerly Corner Lot 38

Southwesterly Line Tract Map 4074-5



37



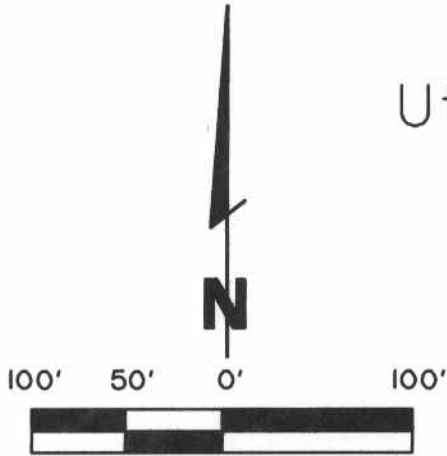
Sec. 36 T.6S. R.3E.

DRAWN BY: SMS
DATE: 2-06-04
M:\gamer valley pipeline\96006028.DWG
APPROVED BY:

3550 E. Florida Avenue, Suite B
Hemet, California 92544
(909) 765-6622 Fax (909) 765-6621

Sheet No.
8 OF
12 SHEETS

Exhibit "A" Utility Easements



SCALE: 1" = 100'

Corporation Grant Deed
Instrument No. 87696

36

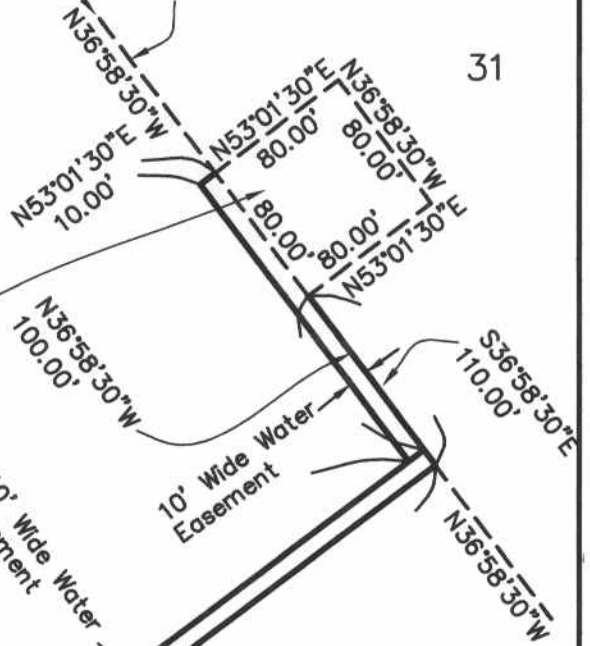
31

Note:

All data is of record per
Tract Map 4074-5

**Tract 4074-5
MB 78/75-85**

PL Northeastly Line Lot 36



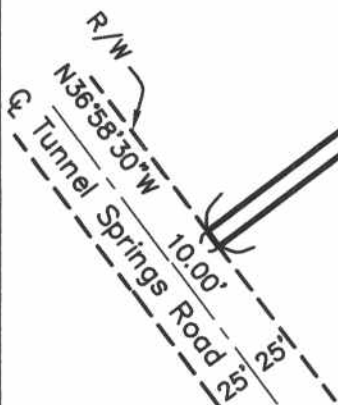
Northwesterly Line Lot 35

N53°01'30"E 700.00'

S53°01'30"W 710.00'

35

Corporation Grant Deed
Instrument No. 87698



Sec. 36 T.6S. R.3E.

DRAWN BY: SMS

DATE: 2-06-04

M:\garner valley pipeline\96006028.DWG

APPROVED BY:

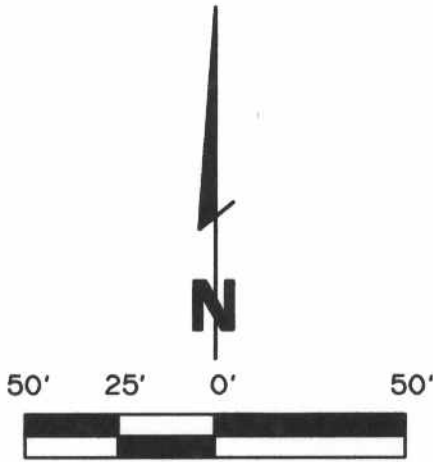
**ENGINEERING
RESOURCES**
OF SOUTHERN CALIFORNIA, INC.

3550 E. Florida Avenue, Suite B
Hemet, California 92544
(909) 765-6622 Fax (909) 765-6621

Sheet No.

9 OF
12 SHEETS

Exhibit "A" Utility Easements



SCALE: 1" = 50'

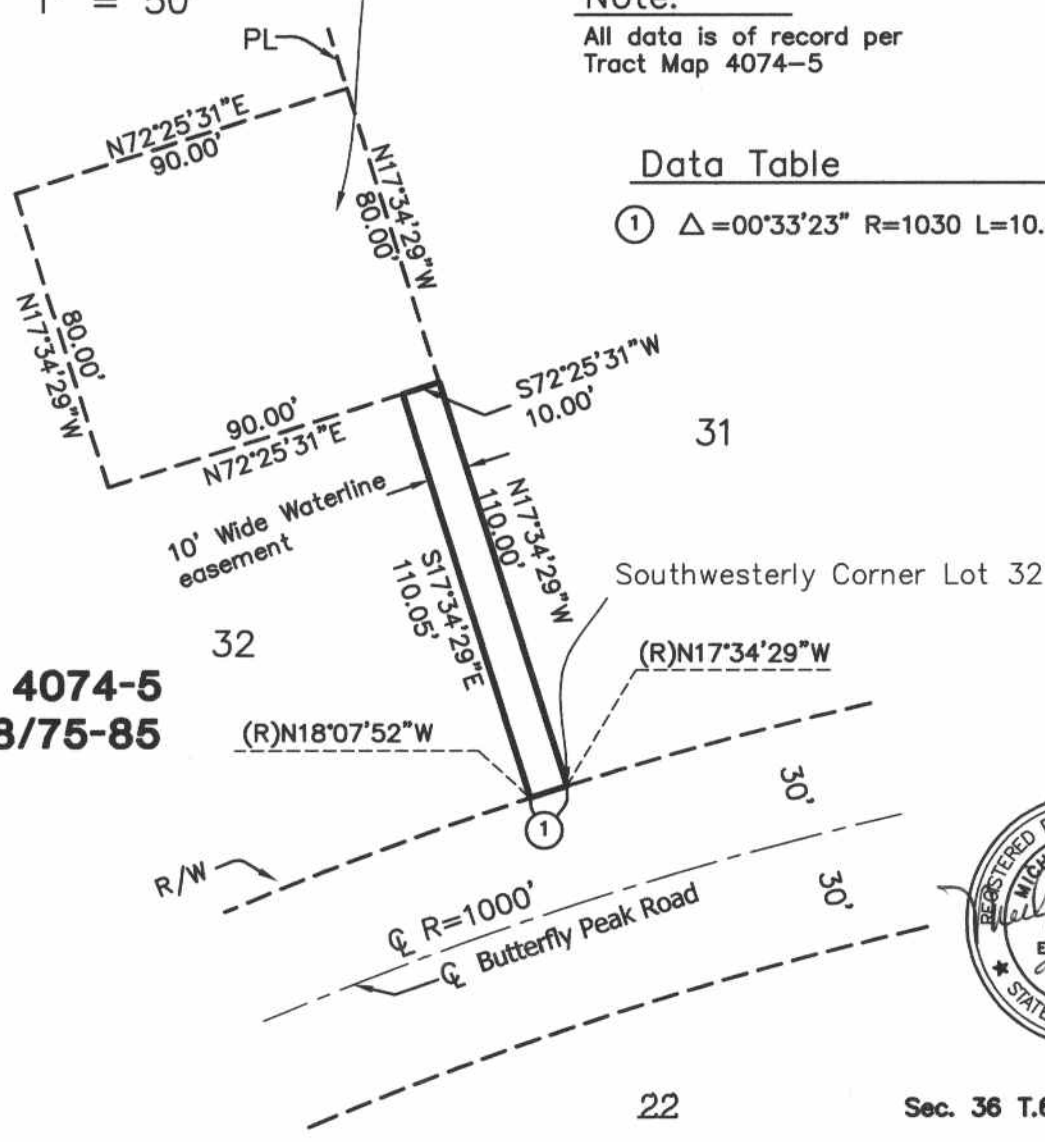
Corporation Grant Deed
Instrument No. 87697

Note:
All data is of record per
Tract Map 4074-5

Data Table

① $\Delta = 00^{\circ}33'23''$ R=1030 L=10.00'

**Tract 4074-5
MB 78/75-85**



22 Sec. 36 T.6S. R.3E.

DRAWN BY: SMS
DATE: 2-06-04
M:\garner valley pipeline\96006028.DWG
APPROVED BY:

**ENGINEERING
RESOURCES**
OF SOUTHERN CALIFORNIA, INC.
3550 E. Florida Avenue, Suite B
Hemet, California 92544
(909) 765-6622 Fax (909) 765-6621

Sheet No.
10 OF
12 SHEETS

Exhibit "A" Access Easement



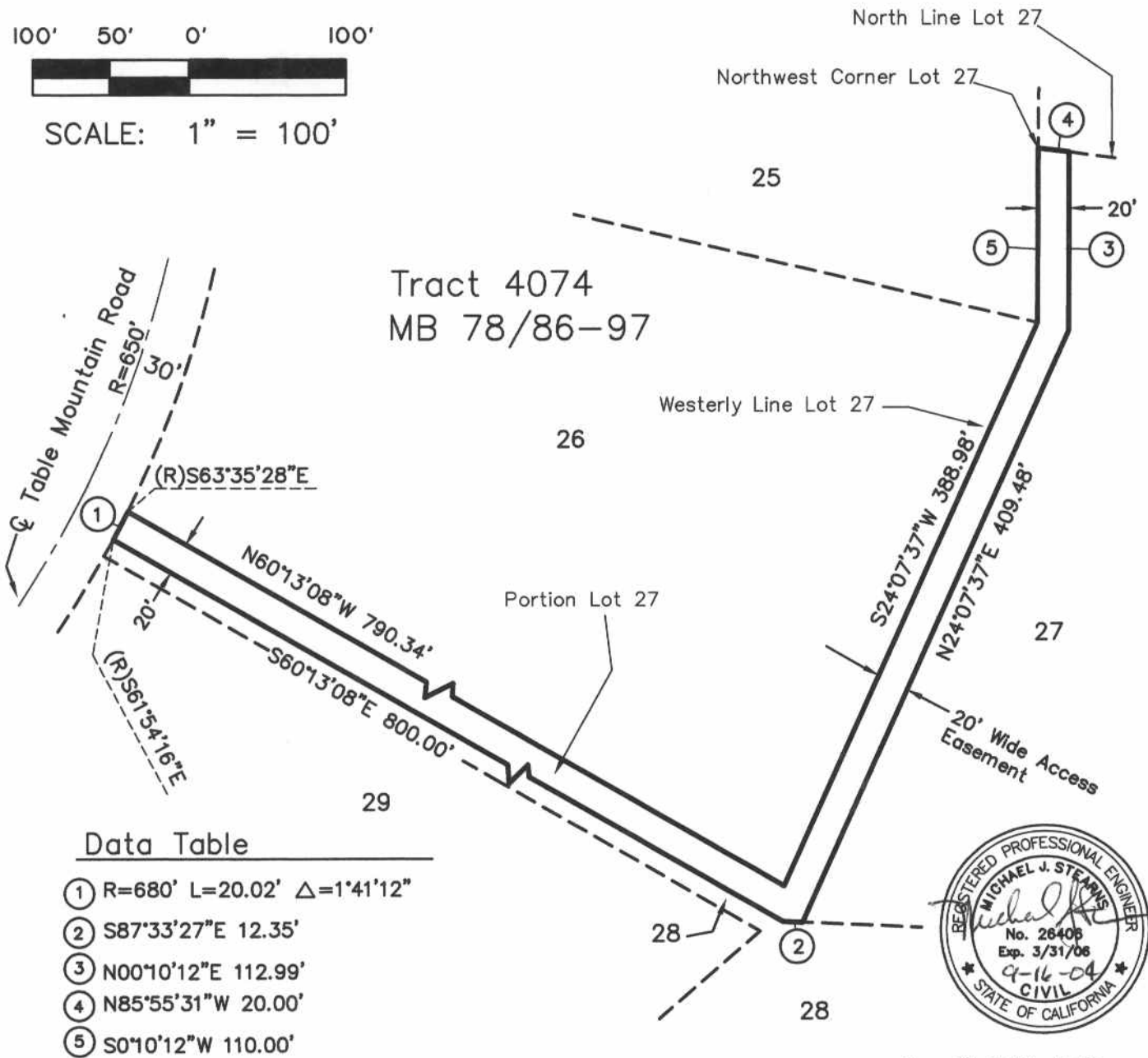
100' 50' 0' 100'



SCALE: 1" = 100'

Note:

All data is of record per
Tract Map 4074



Data Table

- ① R=680' L=20.02' Δ=1°41'12"
- ② S87°33'27"E 12.35'
- ③ N00°10'12"E 112.99'
- ④ N85°55'31"W 20.00'
- ⑤ S0°10'12"W 110.00'



Sec. 31 T.6S. R.4E.

DRAWN BY: SMS

DATE: 2-06-04

M:\garner valley pipeline\9600602B.DWG

APPROVED BY:

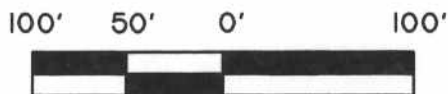
**ENGINEERING
RESOURCES**
OF SOUTHERN CALIFORNIA, INC.

3550 E. Florida Avenue, Suite B
Hemet, California 92544
(909) 765-6622 Fax (909) 765-6621

Sheet No.

11 OF
12 SHEETS

Exhibit "A" Utility Easements

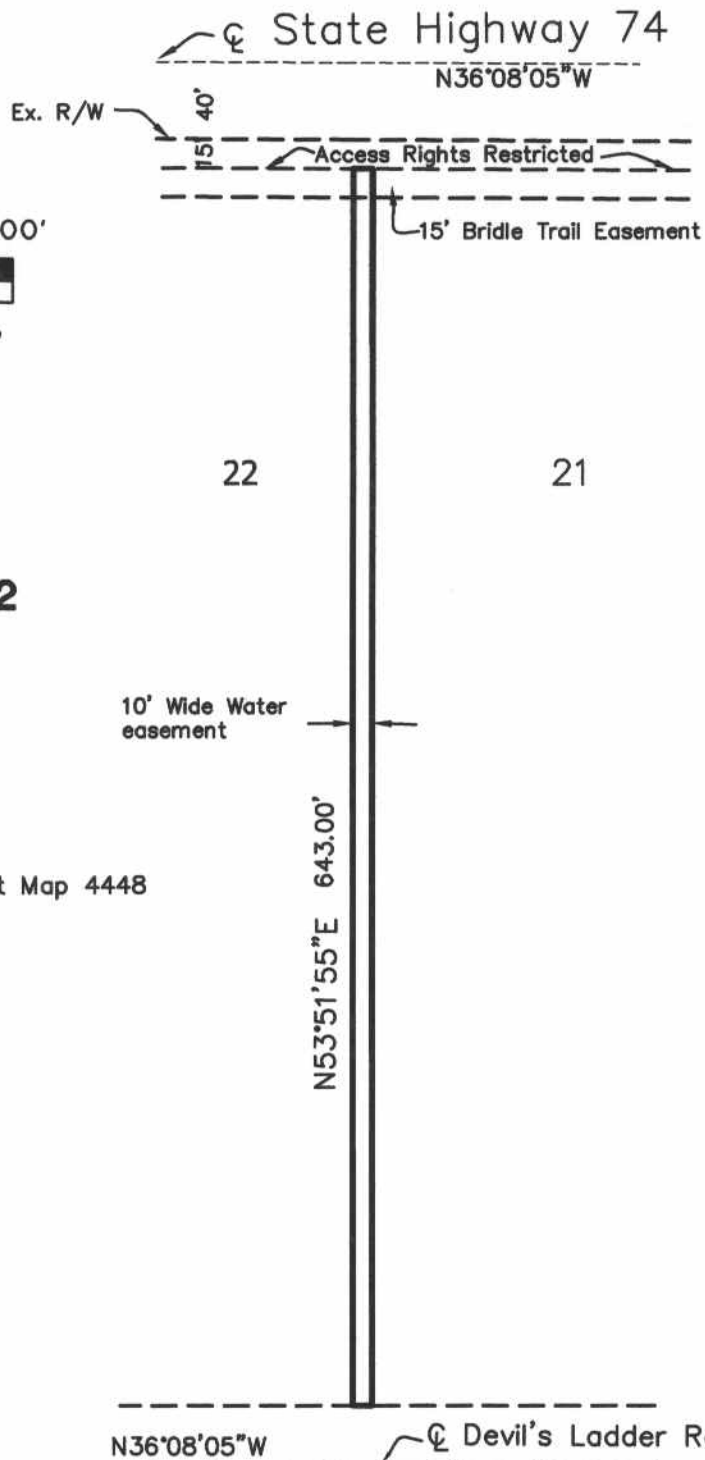


SCALE: 1" = 100'

**Tract 4448
MB 72/27-32**

Note:

All data is of record per Tract Map 4448



N36°08'05"W Devil's Ladder Road

Sec. 36 T.6S. R.3E.



DRAWN BY: SMS

DATE: 2-06-04

M:\gamer valley pipeline\96006028.DWG

APPROVED BY:

**ENGINEERING
RESOURCES**
OF SOUTHERN CALIFORNIA, INC.

3550 E. Florida Avenue, Suite B
Hemet, California 92544
(909) 765-6622 Fax (909) 765-6621

Sheet No.

12 OF

12 SHEETS