

SUBMITTAL TO THE BOARD OF SUPERVISORS
COUNTY OF RIVERSIDE, STATE OF CALIFORNIA

607B



FROM: TLMA – Transportation Dept.

SUBMITTAL DATE:
October 25, 2004

SUBJECT: TRACT 23188-1

A Schedule "A" Subdivision in the Glen Ivy Area
EXTENSION OF TIME AGREEMENTS

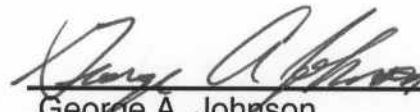
RECOMMENDED MOTION: That the Board approve the attached agreements (which grant an extension of time for twelve months to complete improvements) and approve and accept the consent letter/rider as approved by County Counsel.

BACKGROUND: On October 24, 2000, the Board entered into agreements with KB HOME Coastal, Inc. for the improvement of streets and the installation of a water and sewer system within the above referenced subdivision. Accompanying these agreements were faithful performance securities posted as follows:

- \$2,494,800 - Bond #190791799 for the completion of street improvements
- \$262,500 - Bond #190791799 for the completion of the water system
- \$261,500 - Bond #190791799 for the completion of the sewer system
- \$52,300 - Bond #190791804 for the completion of the monumentation

(Continued)

HS:lf
 Submittals: Vicinity Map
 Road/Drainage Improvement Agrmts
 Water System Improvement Agrmts
 Sewer System Improvement Agrmts
 Survey Monument Agreements



 George A. Johnson
 Director of Transportation

REVIEWED BY EXECUTIVE OFFICE
John J. Johnson
 DATE 10/26/04

Departmental Concurrence

- Consent
- Policy
- Consent
- Policy

Dep't Recomm.:
 Per Exec. Ofc.:

Prev. Agn. Ref.: 10/24/00 - 2.09 | District: 1 | Agenda Number:

**ATTACHMENTS FILED
 WITH THE CLERK OF THE BOARD**

2 . 11

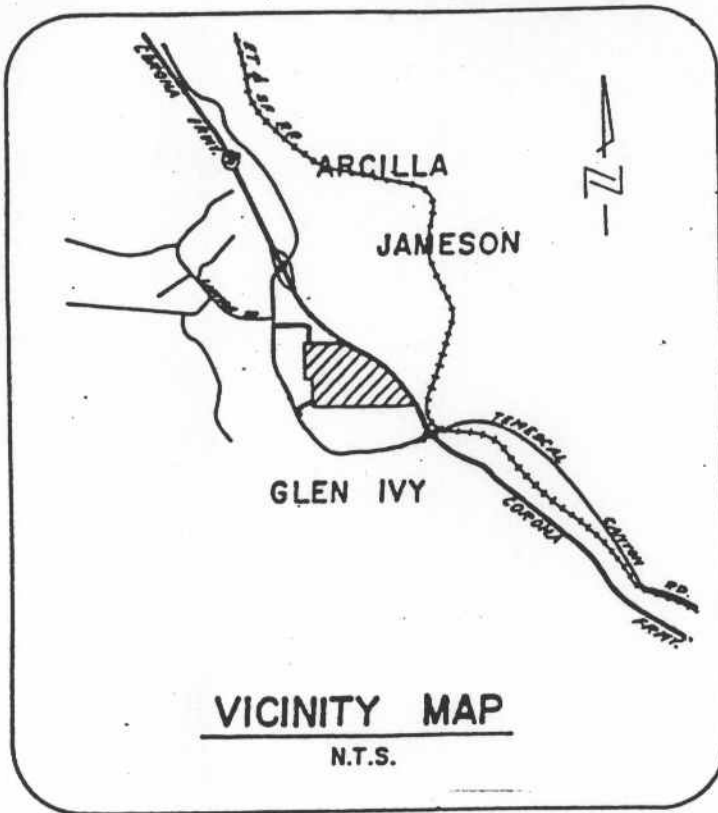
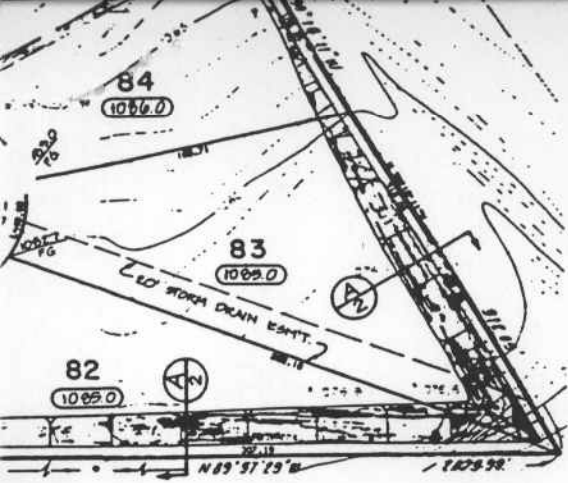
The Honorable Board of Supervisors

RE: Tract 23188

November 1, 2004

Page 2 of 2

The developer requests an extension of time for the completion of Tract 23188. Our records indicate that this project is approximately 90% completed for streets and utility work. The agreements for the extension of time have been approved by County Counsel.



RECEIVED

JAN 10 1988

RIVERSIDE COUNTY ROAD
DEPARTMENT

DEC 11 1987

avenue, Suite 100
California 92705
(714) 250-1500