

SUBMITTAL TO THE BOARD OF SUPERVISORS
COUNTY OF RIVERSIDE, STATE OF CALIFORNIA

530
A



FROM: County Counsel
SUBJECT: Ordinance No. 348.4257

SUBMITTAL DATE: December 10, 2004

RECOMMENDED MOTION: That the Board of Supervisors adopt Ordinance No. 348.4257 amending the zoning in the Homeland Area shown on Map No. 2.2115 Change of Zone Case No. 6782.

BACKGROUND: Change of Zone Case No. 6782 was approved by the Board of Supervisors on July 13, 2004.

Katherine A. Lind
KATHERINE A. LIND
Deputy County Counsel

C.E.O. RECOMMENDATION:

APPROVE

Lisa Brandell

County Executive Office Signature

Policy
 Policy

Consent
 Consent

Department Recommendation:
Per Executive Office:

Prev. Agn. ref.

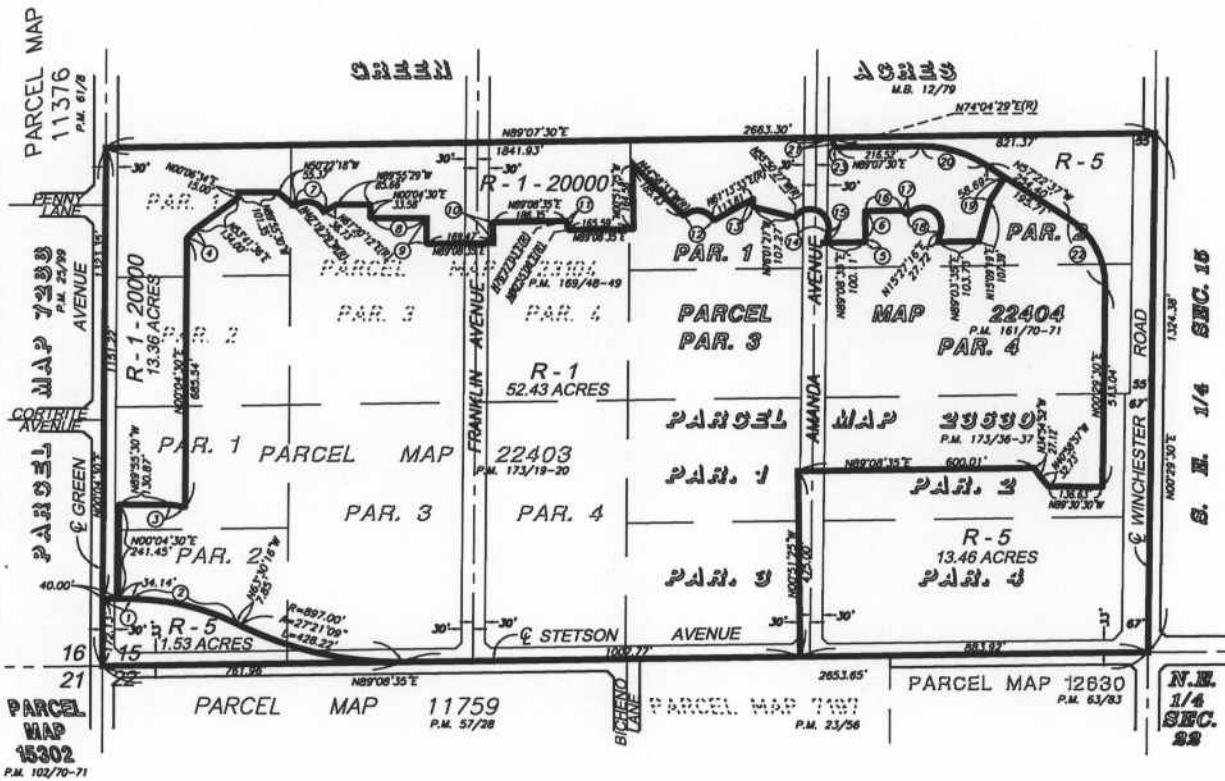
Dist. 3

AGENDA NO.

300 DEC 12 11:02
RECEIVED RIVERSIDE COUNTY

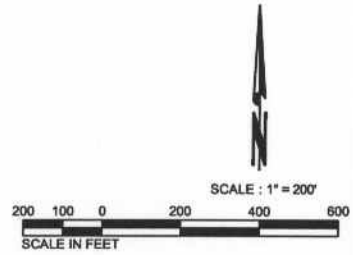
COUNTY OF RIVERSIDE
OFFICE EXECUTIVE

HOMELAND AREA
SEC. 15, T. 5 S., R. 2 W., S.B.B. & M.



COURSE DATA

- 1 N89°55'30"W 74.14'
- 2 R=600.00' A=26°25'14" L=276.68'
- 3 N80°59'36"W 37.59'
- 4 N43°02'22"E 32.08'
- 5 N00°51'25"W 7.00'
- 6 N01°02'15"W 72.00'
- 7 R=48.00' A=101°39'41" L=85.17'
- 8 N89°55'30"W 142.00'
- 9 N00°04'30"E 65.26'
- 10 N00°51'25"W 53.00'
- 11 R=300.00' A=04°28'05" L=23.39'
- 12 R=48.00' A=106°12'06" L=88.97'
- 13 N00°52'30"W 20.76'
- 14 R=48.00' A=161°17'43" L=135.13'
- 15 N15°27'16"E 25.54'
- 16 N89°08'35"E 95.00'
- 17 N52°08'24"W(R) 17.65'
- 18 R=48.00' A=157°35'40" L=132.03'
- 19 N32°37'23"E 70.17'
- 20 R=300.00' A=53°29'53" L=175.40'
- 21 N17°11'11"W 24.99'
- 22 R=200.00' A=57°52'07" L=202.00'
- 23 R=48.00' A=01°15'40" L=1.06'



LEGEND

- R-1** ONE-FAMILY DWELLINGS
- R-1-20000** ONE-FAMILY DWELLINGS - 20,000 S. F. MIN.
- R-5** OPEN AREA COMBINING ZONE

MAP NO. 2.2115
CHANGE OF OFFICIAL ZONING PLAN
 AMENDING
 MAP NO. 2, ORDINANCE NO. 348
 CHANGE OF ZONE CASE NO. 6782
 ADOPTED BY ORDINANCE NO. 348.4257
 DECEMBER 21, 2004
 RIVERSIDE COUNTY BOARD OF SUPERVISORS