

SUBMITTAL TO THE BOARD OF SUPERVISORS  
COUNTY OF RIVERSIDE, STATE OF CALIFORNIA

520 B



FROM: TLMA - Transportation Department

SUBMITTAL DATE:  
December 13, 2004

SUBJECT: Resolution 413-575 to Establish No-Stopping Zones and a No-Parking Zone on Audelo Street, and a Passenger Loading/Unloading Zone on Grand Avenue, Lake Elsinore area

RECOMMENDED MOTION: That the Board adopt Resolution 413-575 to establish No-Stopping Zones and a No-Parking Zone on Audelo Street, and a Passenger Loading/Unloading Zone on Grand Avenue in the Lake Elsinore area, as described in attached Resolution 413-575.

Also, that the Board rescind Resolution 413-306 for a Bus Loading/Unloading Zone on Grand Avenue.

BACKGROUND: The Withrow Elementary School Safety Committee contacted the Transportation Department in regard to traffic concerns on Audelo Street near Withrow Elementary School.

Transportation Department conducted a field review of the site and determined that the proposed No-Stopping Zones and No-Parking Zone (7 a.m. to 3 p.m. on school days) on Audelo Street, and Passenger Loading/Unloading Zone on Grand Avenue will improve the traffic congestion at the school during dismissal time, and improve the sight distance at the school crosswalk south of North Lake Drive.

Based on this review, the Transportation Department recommends approval of these No-Stopping, No-Parking, and Passenger Loading/Unloading Zones. The Transportation Department staff has contacted the Riverside Area office of the California Highway Patrol regarding the proposed zones.

County Counsel has approved this resolution.

LTT:bjl  
attachments

cc: County Counsel  
Lawrence Tai

George A. Johnson  
Director of Transportation

Departmental Concurrence

REVIEWED BY EXECUTIVE OFFICE  
*[Signature]*  
DATE 12/13/04

Dep't Recomm.:  Consent  Policy  
Per Exec. Ofc.:  Consent  Policy

500P DEC 13 6N 3:00  
RECEIVED RIVERSIDE COUNTY

Prev. Agn. Ref.: 6-1-93 #3.7

District: 1

Agenda Number:

2.8

2 RESOLUTION NO. 413-575  
3 ESTABLISHING NO-STOPPING ZONES; A NO-PARKING ZONE;  
4 A PASSENGER-LOADING/UNLOADING ZONE  
5 IN THE LAKE ELSINORE AREA

6 BE IT RESOLVED, DETERMINED AND ORDERED by the Board of  
7 Supervisors, County of Riverside, State of California, in regular session on  
8 December 21, 2004, that pursuant to Ordinance No. 413, the following are hereby  
9 established in the Lake Elsinore area:

10 No-Stopping Zones

11 On the south side of Audelo Street starting at a point 540 feet east of the centerline of  
12 Grand Avenue to a point 670 feet east of the centerline of Grand Avenue, a total  
13 distance of 130 feet.

14  
15 On the west side of Audelo Street starting at a point 30 feet south of the centerline of  
16 North Lake Drive to a point 50 feet south of the centerline of North Lake Drive, a total  
17 distance of 20 feet.

18  
19 On the west side of Audelo Street starting at a point 100 feet south of the centerline of  
20 North Lake Drive to a point 120 feet south of the centerline of North Lake Drive, a total  
21 distance of 20 feet.

22  
23 No-Parking Zone

24 On the northeast side of Audelo Street starting at a point 75 feet north of the centerline  
25 of North Lake Drive to a point 575 feet north of the centerline of North Lake Drive, a

1 total distance of 500 feet.

2 This no-parking zone shall be in effect between the hours of 7:00 a.m. and 3:00 p.m. on school  
3 days.

4  
5 Passenger Loading/Unloading Zone

6 On the east side of Grand Avenue starting at a point 335 feet south of the centerline of  
7 Audelo Street to a point 685 feet south of the centerline of Audelo Street, a total  
8 distance of 350 feet.

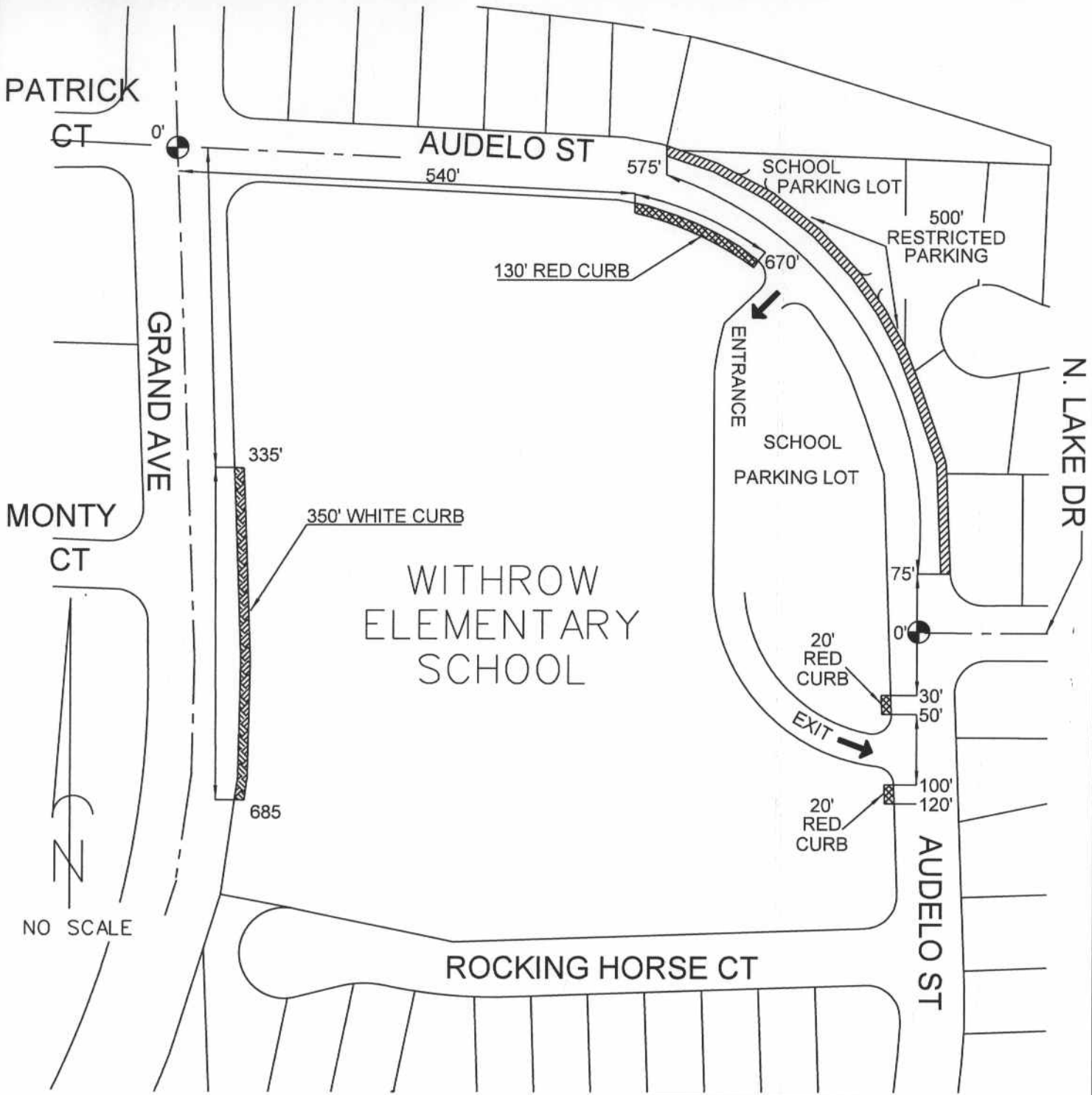
9  
10 BE IT FURTHER RESOLVED, DETERMINED AND ORDERED that Resolution  
11 No. 413-306, heretofore adopted by this Board of Supervisors on June 1, 1993, for a School  
12 Bus Loading/Unloading Zone on Grand Avenue, is hereby rescinded.

13  
14 RH:bjl  
November 16, 2004




15 F:\PCDATA\Traffic\RESO\Resolutions\413-575; ns np plz.doc

FORM APPROVED  
COUNTY COUNSEL

16  
17 NOV 22 2004  
BY Gordon V. Ubo



**LEGEND:**

-  PROPOSED NO PARKING ZONE (7AM TO 3PM SCHOOL DAYS)
-  PROPOSED NO STOPPING ZONE
-  PROPOSED LOADING/UNLOADING PASSENGERS ZONE

COUNTY OF RIVERSIDE  
 TRANSPORTATION DEPARTMENT  
 TRAFFIC ENGINEERING SECTION

RESTRICTED PARKING ZONE  
 7AM to 3PM SCHOOL DAYS  
 and NO STOPPING ZONES  
 ON AUDELO STREET  
 IN THE  
 LAKE ELSINORE AREA

**FILE REFERENCE**

SRF NO. 04-10-026  
 CAD FILE: AUDELO  
 RD BK PG: 38



DATE 10/20/2004	DRAWN BY R. HEALY	PAGE 1 OF 1
--------------------	----------------------	----------------