

633



**SUBMITTAL TO THE BOARD OF SUPERVISORS
COUNTY OF RIVERSIDE, STATE OF CALIFORNIA**

FROM: Clerk of the Board

SUBMITTAL DATE:
December 21, 2004

SUBJECT: Resolution No. 2005-015 Approving the Proposed Resolution of Intent of Coachella Valley Water District to form Assessment District No. 70

RECOMMENDED MOTION: That the Board adopt Resolution No. 2005-015 approving, pursuant to Section 10104 of the California Streets and Highways Code, the proposed Resolution of Intention of Coachella Valley Water District to form Assessment District No. 70

BACKGROUND: Section 10104 of the California Streets and Highways Code requires the Board's approval of the Proposed Resolution of Intention of Coachella Valley Water District to form Assessment District No. 70. All documents required by Section 10104 have been filed with the Clerk of the Board. The District, by its Resolution No. 2004-232, has requested the Board's Approval.

FORM APPROVED
COUNTY COUNSEL

DEC 27 2004
Concurrent

BY *[Signature]*
ASSISTANT COUNTY COUNSEL

[Signature]
Nancy Romero, Clerk of the Board

FINANCIAL DATA	Current F.Y. Total Cost:	\$ 0	In Current Year Budget:	YES
	Current F.Y. Net County Cost:	\$ 0	Budget Adjustment:	NO
	Annual Net County Cost:	\$ 0	For Fiscal Year:	04/05

SOURCE OF FUNDS:	Positions To Be Deleted Per A-30	<input type="checkbox"/>
	Requires 4/5 Vote	<input type="checkbox"/>

C.E.O. RECOMMENDATION:
APPROVE

County Executive Office Signature *[Signature]*

- Dep't Recomm.: Consent Policy
- Per Exec. Ofc.: Consent Policy

Prev. Agn. Ref.: District: 4th Agenda Number:

**ATTACHMENTS FILED
WITH THE CLERK OF THE BOARD**

3.5

RESOLUTION NO. 2005-015

RESOLUTION OF THE COUNTY OF RIVERSIDE
APPROVING, PURSUANT TO SECTION 10104 OF THE
CALIFORNIA STREETS AND HIGHWAYS CODE, THE
PROPOSED RESOLUTION OF INTENTION OF
COACHELLA VALLEY WATER DISTRICT TO FORM
ASSESSMENT DISTRICT NO. 70

WHEREAS, Section 10104 of the California Streets and Highways Code requires the Board of Supervisors (the "Board") of the County of Riverside to approve the proposed Resolution of Intention of Coachella Valley Water District (the "District") to form Assessment District No. 70; and

WHEREAS, the District has caused to be filed with the Clerk of the Board of Supervisors a copy of said proposed Resolution of Intention and a map showing the boundaries of proposed Assessment District No. 70; and

WHEREAS, the District, by its Resolution No. 2004-232, has formally requested the Board to approve said proposed Resolution of Intention; now, therefore,

BE IT RESOLVED, FOUND, DETERMINED AND ORDERED by the Board of Supervisors for the County of Riverside in regular session assembled on January 4, 2005, that the proposed Resolution of Intention of the Board of Directors of Coachella Valley Water District, Riverside County, California, expressing its intentions to form Assessment District No. 70, to acquire certain property and to construct certain public improvements as identified by said Resolution of Intention and as shown on the map filed with the Clerk of the Board of Supervisors, is approved pursuant to Section 10104 of the California Streets and Highways Code;

1 BE IT FURTHER RESOLVED AND ORDERED that all work to be performed in
2 proposed Assessment District No. 70 is to be in compliance with Riverside County Ordinance
3 No. 499.
4

5 BE IT FURTHER RESOLVED AND ORDERED that the Clerk of the Board of
6 Supervisors is authorized to certify the adoption of this resolution and to deliver two certified
7 copies to the District.
8
9
10
11
12
13
14
15
16
17
18
19
20
21
22
23
24
25
26
27
28



ESTABLISHED IN 1918 AS A PUBLIC AGENCY

COACHELLA VALLEY WATER DISTRICT

POST OFFICE BOX 1058 • COACHELLA, CALIFORNIA 92236 • TELEPHONE (760) 398-2651 • FAX (760) 398-3711

DIRECTORS:

JOHN W. McFADDEN, PRESIDENT
PETER NELSON, VICE PRESIDENT
TELLIS CODEKAS
RUSSELL KITAHARA
PATRICIA A. LARSON

OFFICERS:

STEVEN B. ROBBINS,
GENERAL MANAGER-CHIEF ENGINEER
JULIA FERNANDEZ, SECRETARY
DAN PARKS, ASST. TO GENERAL MANAGER
REDWINE AND SHERRILL, ATTORNEYS

December 3, 2004

File: 0618.256
0710.1503.13

Riverside County Board of Supervisors
4080 Lemon Street, 1st Floor
Riverside, California 92501

Dear Board of Supervisors:

Subject: Proposed Assessment District

The Coachella Valley Water District (CVWD) is considering the formation of an assessment district in an area that lies within the County of Riverside. The assessment district would be formed in cooperation with certain properties in the community of Thousand Palms for sewer improvements.

The funds derived from the assessment district are intended to be used to pay for the costs of sewer infrastructure. A map of the area of benefit is enclosed for your reference.

At a regular meeting on October 12, 2004, the CVWD Board of Directors adopted Resolution No. 2004-232 requesting consent of the Riverside County Board of Supervisors to the formation of and the acquisition of improvements for the benefit of Assessment District No. 70. A copy of the resolution is enclosed.

The CVWD's counsel for the assessment district has drafted a resolution for adoption by your Board of Supervisors. A copy of the draft resolution is enclosed. In order to meet the assessment district's formation schedule, CVWD respectfully requests that you schedule the adoption of this resolution for your January 4, 2005, Board of Supervisors meeting.

Thank you in advance for your assistance in completing the formation of the assessment district.

TRUE CONSERVATION
USE WATER WISELY

2004-12-04/198

If you have any questions or require additional information, please call Jeff Townsend, Project Engineer, extension 2365.

Yours very truly,



for Steve Robbins
General Manager-Chief Engineer

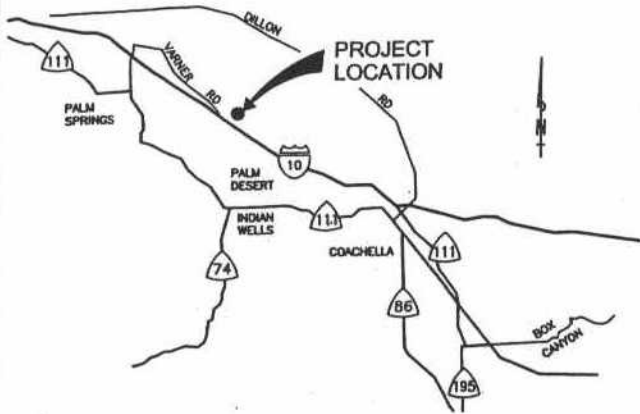
Enclosures/3/as

cc: Fritz Stradling (with enclosures)
Stradling, Yocca, Carlson and Rauth
660 Newport Center Drive, Suite 1600
Newport Beach, California 92660

JT:les\eng\san\dec\propsoed ad70

BOUNDARY MAP FOR SANITARY SEWER ASSESSMENT DISTRICT NO. 70

COACHELLA VALLEY WATER DISTRICT
COUNTY OF RIVERSIDE, STATE OF CALIFORNIA

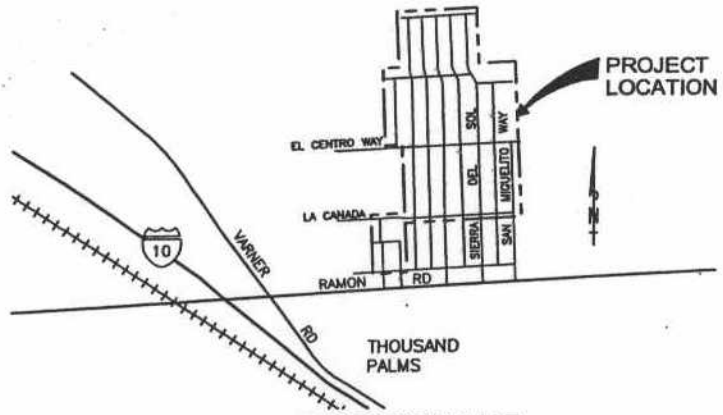


VICINITY MAP
NTS

LEGEND

- ASSESSMENT DISTRICT BOUNDARY
- (45) ASSESSOR PARCEL NUMBER
- (123) ASSESSOR BLOCK NUMBER
- 33 ASSESSMENT NUMBER

NOTE: ALL PARCELS ARE IN ASSESSOR BOOK 650



LOCATION MAP
NTS

FILED IN THE OFFICE OF THE SECRETARY OF THE DISTRICT OF THE COACHELLA VALLEY WATER DISTRICT THIS _____ DAY OF _____, 200__

SECRETARY OF THE DISTRICT
COACHELLA VALLEY WATER DISTRICT

I HEREBY CERTIFY THAT THE WITHIN MAP SHOWING PROPOSED BOUNDARIES OF ASSESSMENT DISTRICT NO. 70, COACHELLA VALLEY WATER DISTRICT, COUNTY OF RIVERSIDE, STATE OF CALIFORNIA, WAS APPROVED BY THE BOARD OF DIRECTORS OF THE COACHELLA VALLEY WATER DISTRICT AT A REGULAR MEETING THEREOF, HELD ON THE _____ DAY OF _____, 200__, BY ITS RESOLUTION NO. _____

SECRETARY OF THE DISTRICT
COACHELLA VALLEY WATER DISTRICT

FILED THIS _____ DAY OF _____, 200__, AT THE HOUR OF _____ O'CLOCK _____ M. IN BOOK _____, PAGE _____
OF MAPS OF ASSESSMENT AND COMMUNITY FACILITIES DISTRICTS IN THE OFFICE OF THE COUNTY RECORDER IN THE COUNTY
OF RIVERSIDE, STATE OF CALIFORNIA.

COUNTY RECORDER OF THE COUNTY OF RIVERSIDE

FILED IN THE OFFICE OF THE SUPERINTENDENT OF STREETS OF THE COACHELLA VALLEY WATER DISTRICT, THIS _____ DAY OF _____, 200__

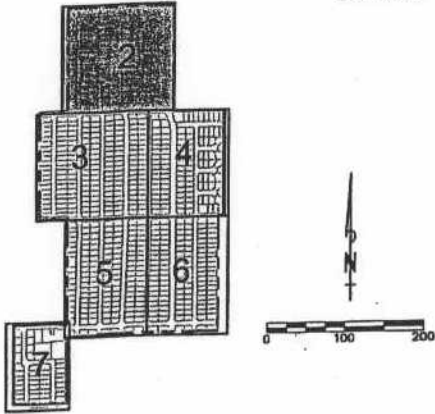
SUPERINTENDENT OF STREETS
COACHELLA VALLEY WATER DISTRICT

4.E

R:\3113\0010\CoVal\WTD\1-BOUNDARY_MAP.dwg 07/24/2004 10:28

BOUNDARY MAP FOR SANITARY SEWER ASSESSMENT DISTRICT NO. 70

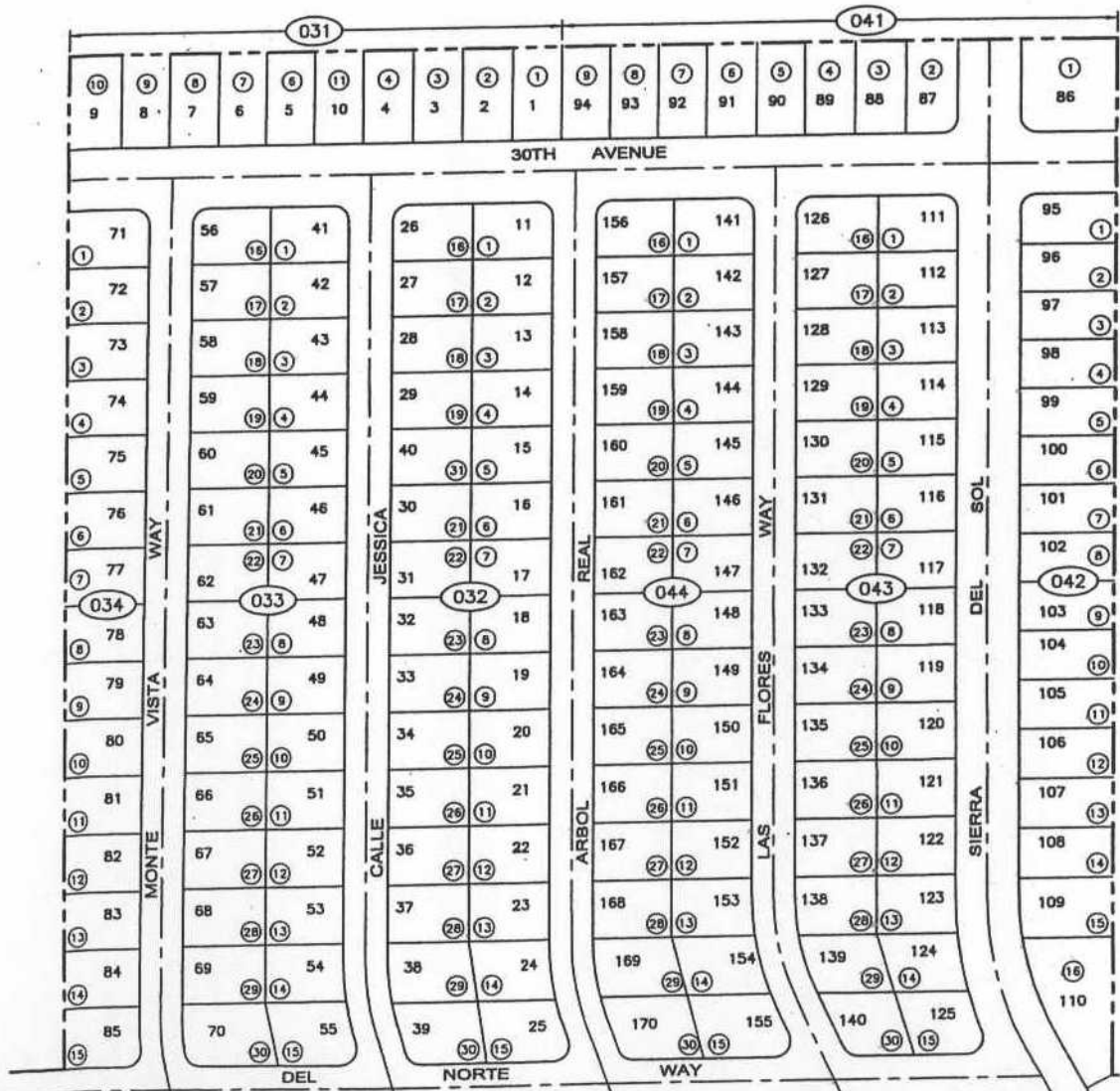
COACHELLA VALLEY WATER DISTRICT
COUNTY OF RIVERSIDE, STATE OF CALIFORNIA



LEGEND

- ASSESSMENT DISTRICT BOUNDARY
- (45) ASSESSOR PARCEL NUMBER
- (123) ASSESSOR BLOCK NUMBER
- 33 ASSESSMENT NUMBER

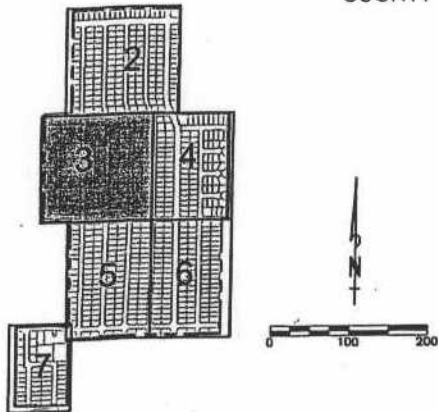
NOTE: ALL PARCELS ARE IN ASSESSOR BOOK 650



FOR PARCELS SOUTH OF DEL NORTE WAY SEE SHEET 3 & 4

BOUNDARY MAP FOR SANITARY SEWER ASSESSMENT DISTRICT NO. 70

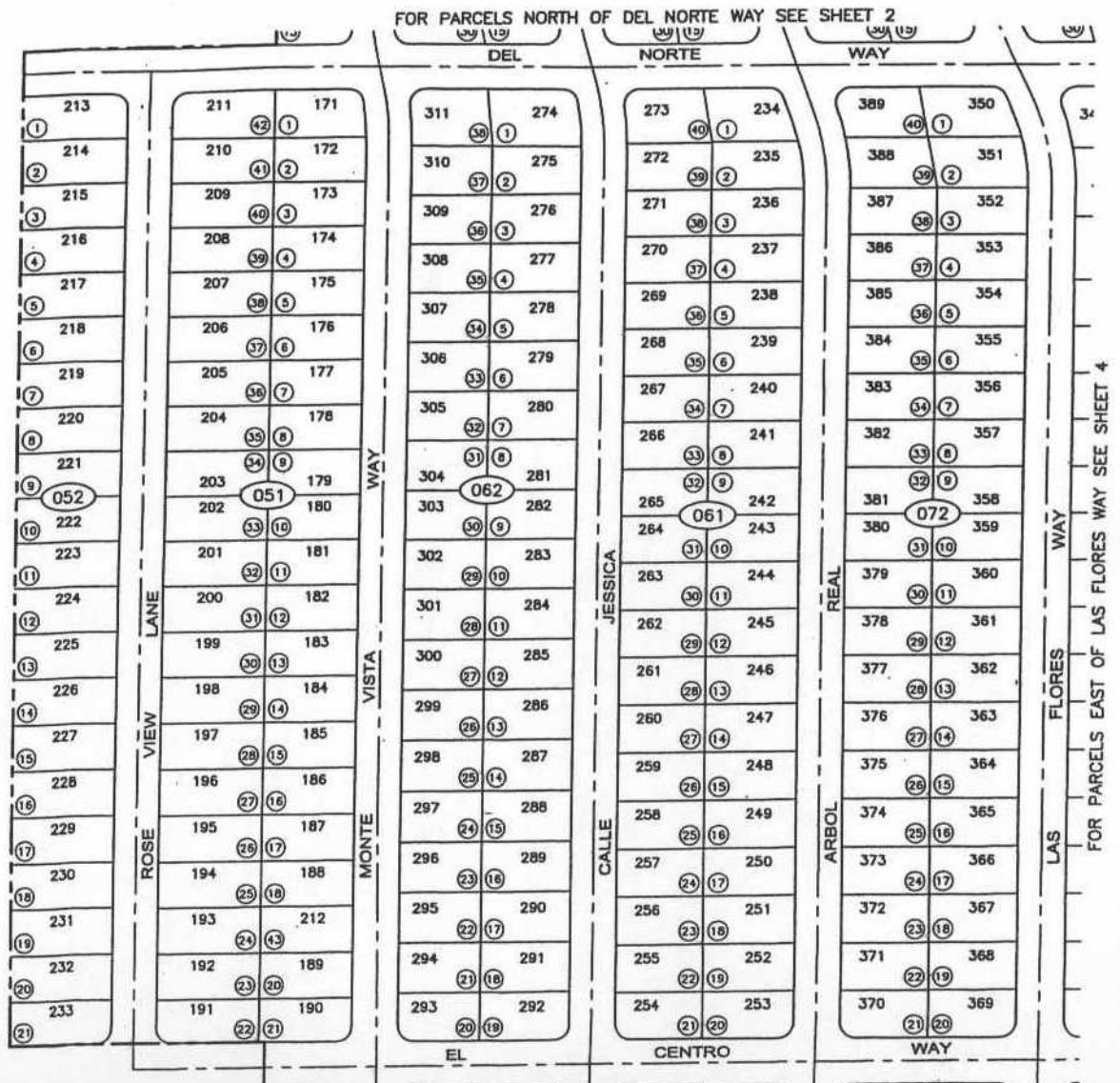
COACHELLA VALLEY WATER DISTRICT
COUNTY OF RIVERSIDE, STATE OF CALIFORNIA



LEGEND

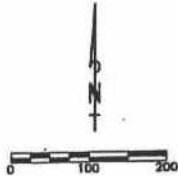
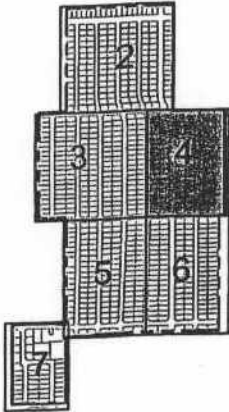
- ASSESSMENT DISTRICT BOUNDARY
- (45) ASSESSOR PARCEL NUMBER
- (123) ASSESSOR BLOCK NUMBER
- 33 ASSESSMENT NUMBER

NOTE: ALL PARCELS ARE IN ASSESSOR BOOK 650



BOUNDARY MAP FOR SANITARY SEWER ASSESSMENT DISTRICT NO. 70

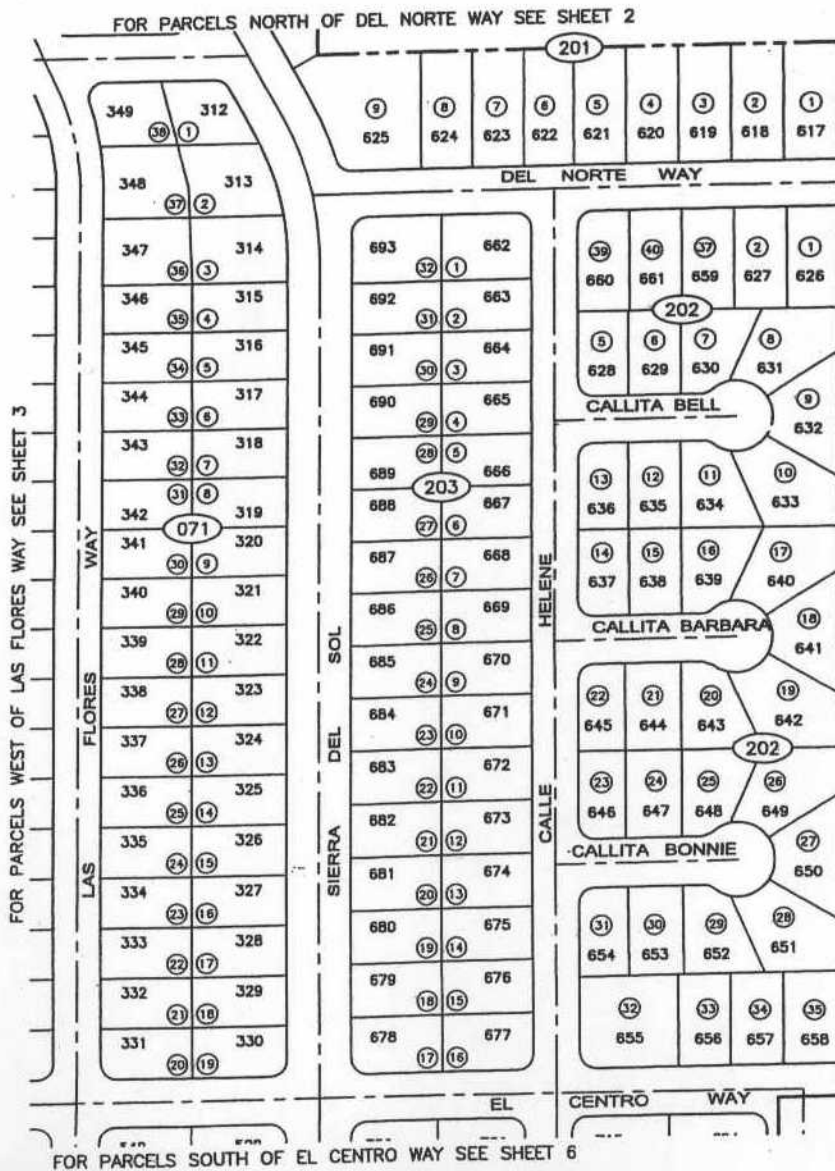
COACHELLA VALLEY WATER DISTRICT
COUNTY OF RIVERSIDE, STATE OF CALIFORNIA



LEGEND

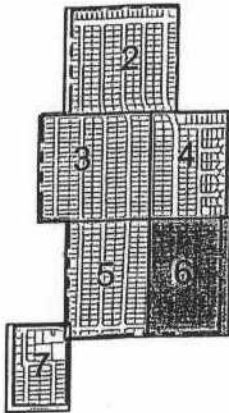
- ASSESSMENT DISTRICT BOUNDARY
- (45) ASSESSOR PARCEL NUMBER
- (123) ASSESSOR BLOCK NUMBER
- 33 ASSESSMENT NUMBER

NOTE: ALL PARCELS ARE IN ASSESSOR BOOK 650



BOUNDARY MAP FOR SANITARY SEWER ASSESSMENT DISTRICT NO. 70

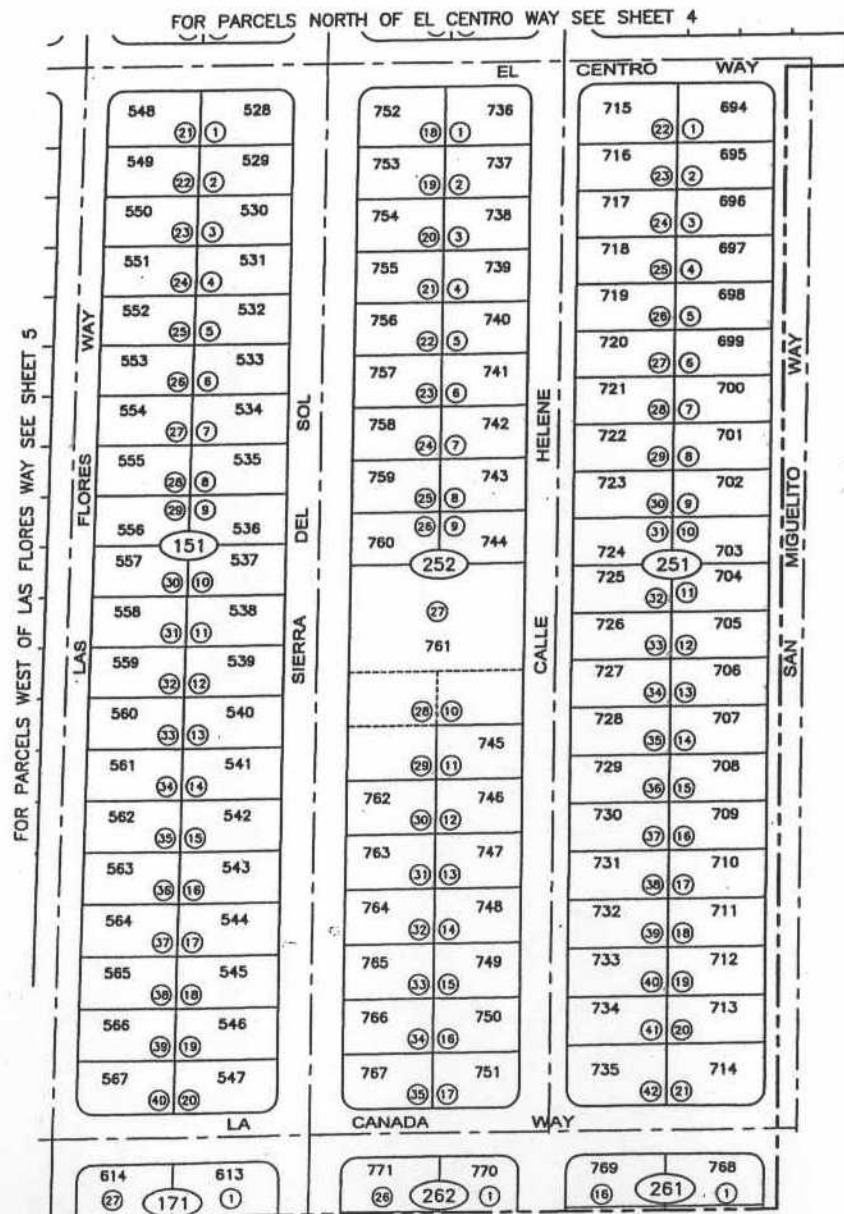
COACHELLA VALLEY WATER DISTRICT
COUNTY OF RIVERSIDE, STATE OF CALIFORNIA



LEGEND

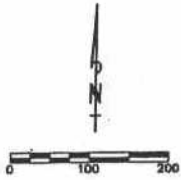
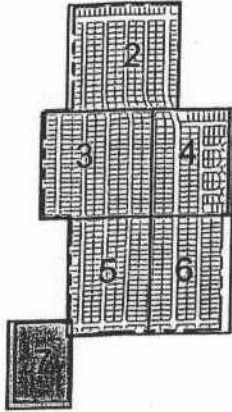
- ASSESSMENT DISTRICT BOUNDARY
- (45) ASSESSOR PARCEL NUMBER
- (123) ASSESSOR BLOCK NUMBER
- 33 ASSESSMENT NUMBER

NOTE: ALL PARCELS ARE IN ASSESSOR BOOK 650



BOUNDARY MAP FOR SANITARY SEWER ASSESSMENT DISTRICT NO. 70

COACHELLA VALLEY WATER DISTRICT
COUNTY OF RIVERSIDE, STATE OF CALIFORNIA



LEGEND

- ASSESSMENT DISTRICT BOUNDARY
- (45) ASSESSOR PARCEL NUMBER
- (123) ASSESSOR BLOCK NUMBER
- 33 ASSESSMENT NUMBER

NOTE: ALL PARCELS ARE IN ASSESSOR BOOK 650

