

SUBMITTAL TO THE BOARD OF SUPERVISORS
COUNTY OF RIVERSIDE, STATE OF CALIFORNIA



FROM: County Counsel

SUBMITTAL DATE: January 24, 2005

SUBJECT: Ordinance No. 348.4269

RECOMMENDED MOTION: That the Board of Supervisors adopt Ordinance No. 348.4269 amending the zoning in the Prado/Mira Loma District shown on Map No. 38.100 Change of Zone Case No. 6822.

BACKGROUND: Change of Zone Case No. 6822 was approved by the Board of Supervisors on May 25, 2004.

Katherine A. Lind
KATHERINE A. LIND
Deputy County Counsel

C.E.O. RECOMMENDATION: **APPROVE**

Lon Brandt

County Executive Office Signature

Policy
 Policy

Consent
 Consent

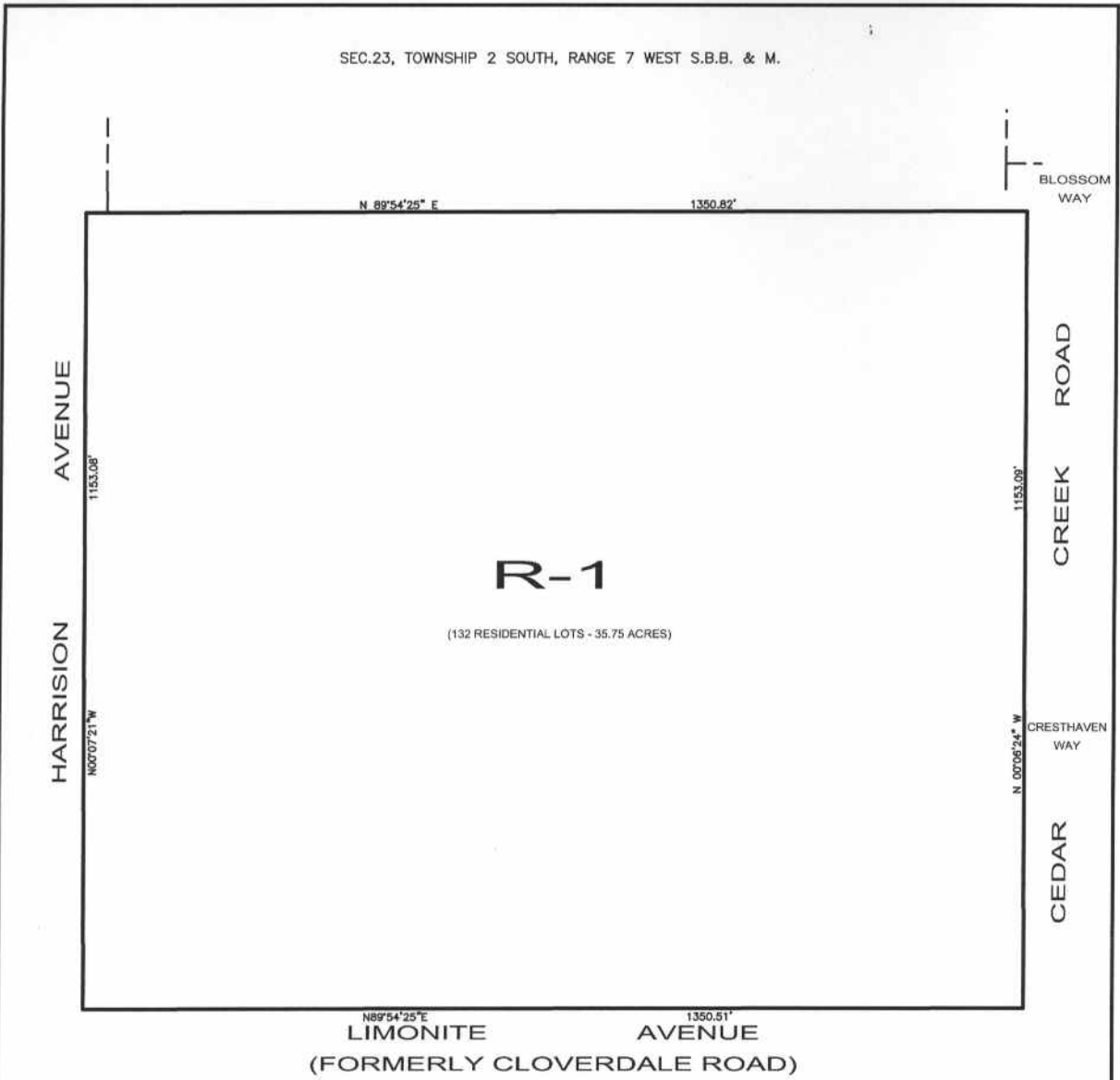
Department Recommendation:
Per Executive Office:

Prev. Agn. ref.

Dist. 2

AGENDA NO.

SEC.23, TOWNSHIP 2 SOUTH, RANGE 7 WEST S.B.B. & M.



R-1

(132 RESIDENTIAL LOTS - 35.75 ACRES)

LIMONITE AVENUE
(FORMERLY CLOVERDALE ROAD)



SCALE 1" = 100'



LEGEND

R-1

1 - FAMILY DWELLINGS

MAP NO. 38.100

CHANGE OF OFFICAL ZONING PLAN

PRADO-MIRA LOMA
DISTRICT

CHANGE OF ZONE CASE NO. 6822
AMENDING ORDINANCE NO. 348
ADOPTED BY ORDINANCE 348.4269
FEBRUARY 8, 2005

RIVERSIDE COUNTY BOARD OF SUPERVISORS

APN 164 010 003
APN 164 010 004
APN 164 010 005