

SUBMITTAL TO THE BOARD OF SUPERVISORS
COUNTY OF RIVERSIDE, STATE OF CALIFORNIA

419A



FROM: County Counsel

SUBMITTAL DATE: February 15, 2005

SUBJECT: Ordinance No. 348.4273

RECOMMENDED MOTION: That the Board of Supervisors adopt Ordinance No. 348.4273 amending the zoning in the Thousand Palms District shown on Map No. 40.035 Change of Zone Case No. 6479.

BACKGROUND: Change of Zone Case No. 6479 was approved by the Board of Supervisors on May 22, 2001.

Katherine A. Lind
KATHERINE A. LIND
Deputy County Counsel

C.E.O. RECOMMENDATION:

APPROVE

Lisa Brandt

County Executive Office Signature

Policy
 Policy

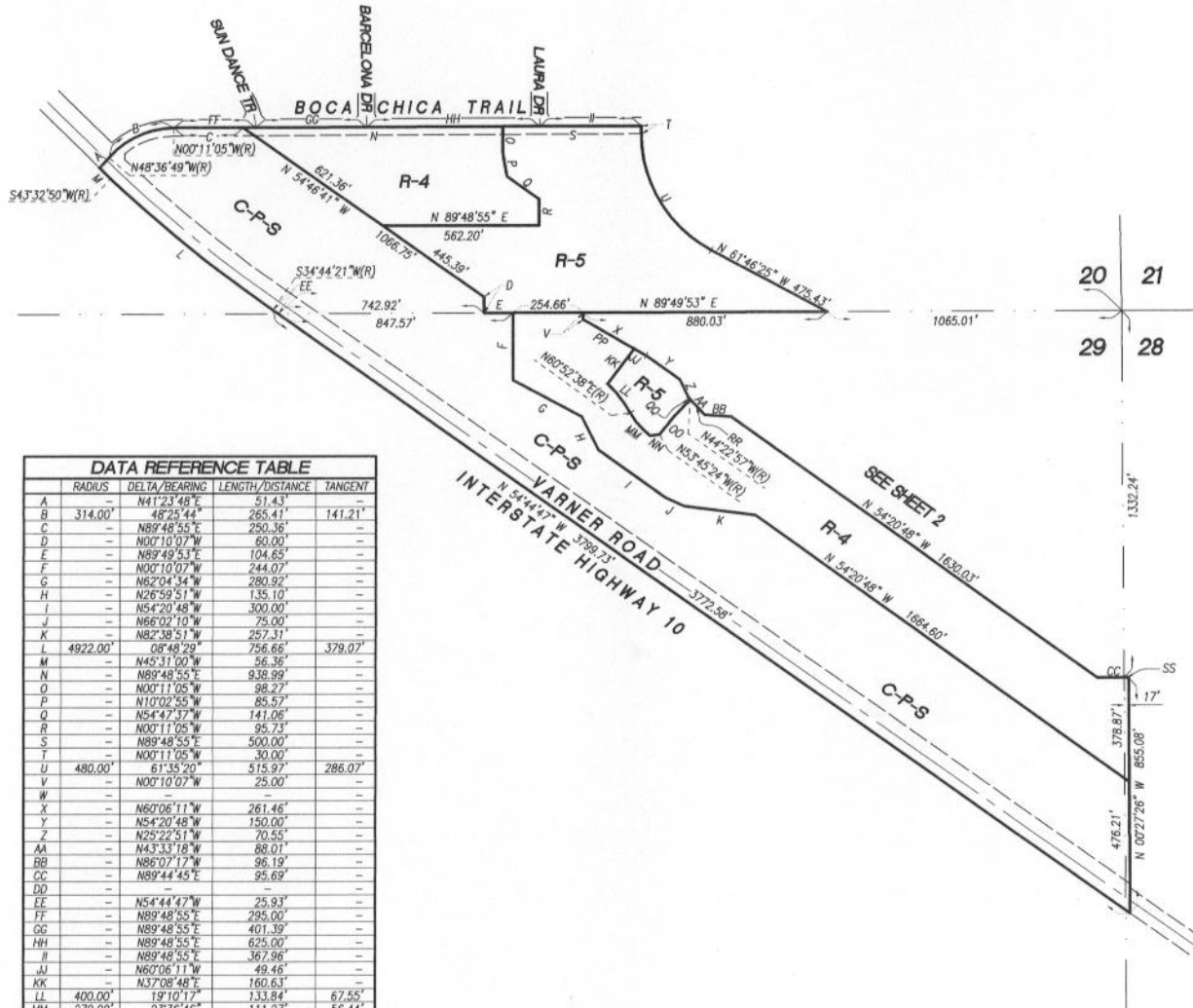
Consent
 Consent

Department Recommendation:
Per Executive Office:

Prev. Agn. ref.

Dist. 4

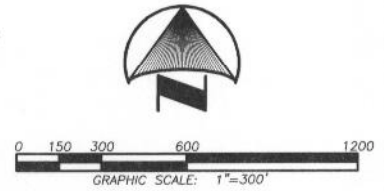
AGENDA NO.

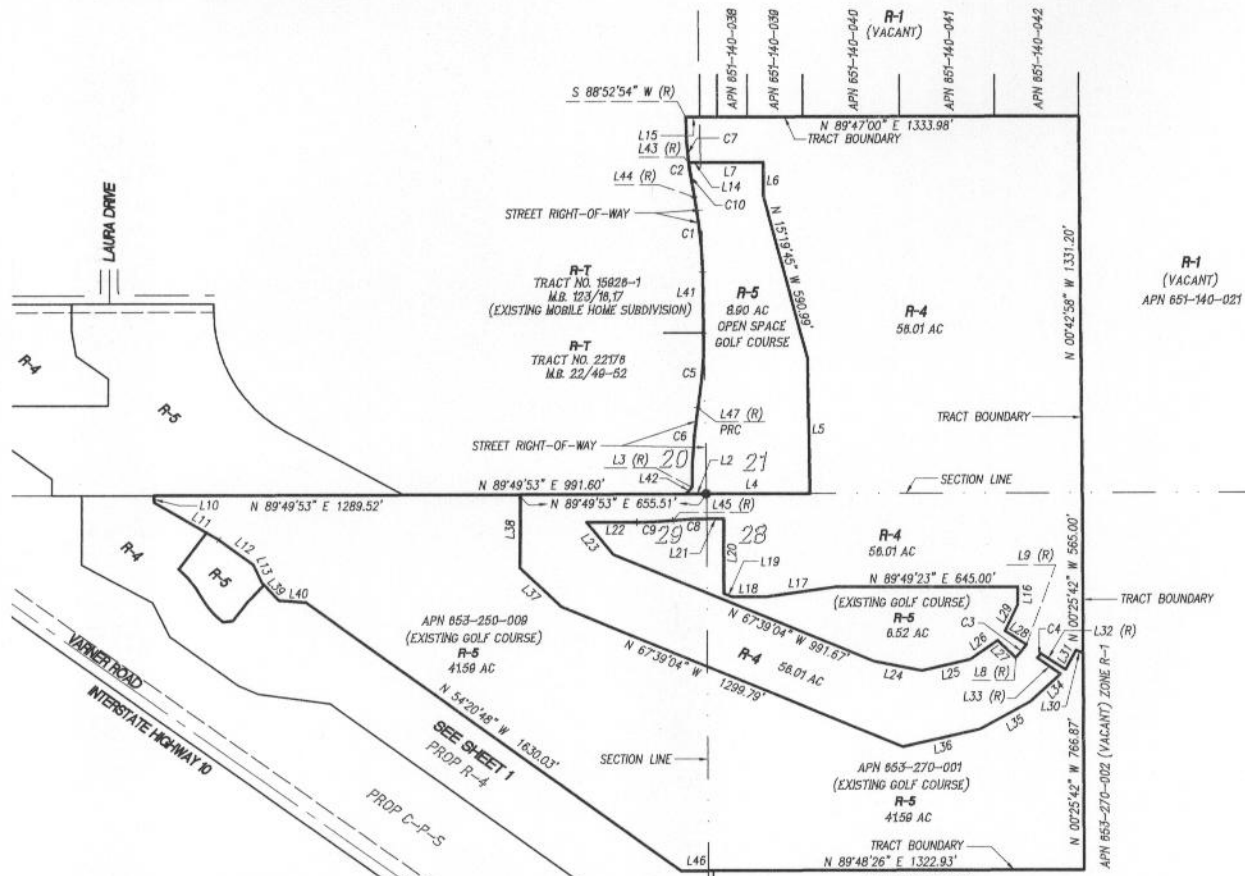


DATA REFERENCE TABLE			
RADIUS	DELTA/BEARING	LENGTH/DISTANCE	TANGENT
A	N41°23'48"E	51.43'	-
B	314.00'	48°25'44"	265.41'
C	-	N89°48'55"E	250.36'
D	-	N00°10'07"W	80.00'
E	-	N89°49'53"E	104.65'
F	-	N00°10'07"W	244.07'
G	-	N62°04'34"W	280.92'
H	-	N26°59'51"W	135.10'
I	-	N54°20'48"W	300.00'
J	-	N66°02'10"W	75.00'
K	-	N82°38'51"W	257.31'
L	4922.00'	08°48'29"	756.66'
M	-	N45°11'00"W	56.36'
N	-	N89°48'55"E	938.99'
O	-	N00°11'05"W	98.27'
P	-	N10°02'55"W	85.57'
Q	-	N54°47'37"W	141.06'
R	-	N00°11'05"W	95.73'
S	-	N89°48'55"E	500.00'
T	-	N00°11'05"W	30.00'
U	480.00'	61°35'20"	515.97'
V	-	N00°10'07"W	25.00'
W	-	-	-
X	-	N60°06'11"W	261.46'
Y	-	N54°20'48"W	150.00'
Z	-	N25°22'51"W	70.55'
AA	-	N43°33'18"W	88.01'
BB	-	N86°07'17"W	96.19'
CC	-	N89°44'45"E	95.69'
DD	-	-	-
EE	-	N54°44'47"W	25.93'
FF	-	N89°48'55"E	295.00'
GG	-	N89°48'55"E	401.39'
HH	-	N89°48'55"E	625.00'
II	-	N89°48'55"E	367.96'
JJ	-	N60°06'11"W	49.46'
KK	-	N37°08'48"E	160.63'
LL	400.00'	19°10'12"	133.84'
MM	270.00'	23°36'46"	111.27'
NN	-	N82°57'04"E	33.54'
OO	1033.00'	09°22'22"	169.01'
PP	-	N60°06'11"W	212.00'
QQ	-	N43°33'18"W	11.00'
RR	-	N43°33'18"W	77.01'
SS	-	N89°48'26"E	17.00'

- LEGEND**
- C-P-S SCENIC HIGHWAY COMMERCIAL
 - R-4 PLANNED RESIDENTIAL
 - R-5 OPEN AREA COMBINING ZONE-RESIDENTIAL DEVELOPMENTS

MAP NO. 40.035
**CHANGE OF OFFICIAL ZONING PLAN
 THOUSAND PALMS
 DISTRICT**
 CHANGE OF ZONE CASE NO. 6479
 AMENDING ORDINANCE NO. 348
 ADOPTED BY ORDINANCE NO. 348.4273
 DATE: 03/08/05





LINE TABLE

L#	DISTANCE	BEARING
L1	73.41'	N 89°49'53" E
L2	---	S 88°52'54" W
L3	363.04'	N 89°49'53" E
L4	480.00'	N 01°09'48" W
L5	119.80'	N 00°13'00" W
L6	220.36'	N 89°47'00" E
L7	---	S 46°46'02" E
L8	---	S 57°26'47" E
L9	23.00'	N 00°10'07" W
L10	261.46'	N 89°49'53" E
L11	150.00'	N 54°20'48" W
L12	70.55'	N 25°22'51" W
L13	41.81'	N 89°45'55" W
L14	50.01'	N 89°45'55" W
L15	60.00'	N 00°10'37" W
L16	247.80'	N 81°57'01" E
L17	115.19'	N 89°49'23" E
L18	30.85'	N 67°39'04" W
L19	264.13'	N 00°27'22" W
L20	60.22'	N 89°49'23" E
L21	176.87'	N 89°49'53" E
L22	147.05'	N 40°17'06" W
L23	170.78'	N 78°41'59" W
L24	175.29'	N 76°39'30" E
L25	117.57'	N 55°04'22" E
L26	89.61'	N 46°52'05" W
L27	89.72'	N 57°33'31" W
L28	106.07'	N 25°36'28" E
L29	28.25'	N 69°32'33" W
L30	76.79'	N 28°17'42" E
L31	103.81'	N 57°25'59" W
L32	98.10'	N 54°35'05" W
L33	143.87'	N 47°26'09" E
L34	203.35'	N 61°17'35" E
L35	276.29'	N 76°57'18" E
L36	199.81'	N 46°55'35" W
L37	260.00'	N 00°10'07" W
L38	88.01'	N 43°31'18" W
L39	96.19'	N 86°07'19" W
L40	216.05'	N 01°09'48" W
L41	32.80'	N 44°20'54" E
L42	---	S 82°56'29" W
L43	---	S 78°21'41" W
L44	---	S 05°45'44" W
L45	95.69'	N 89°44'45" E
L46	---	S 60°41'17" E
L47	---	S 60°41'17" E

CURVE TABLE

C#	RADIUS	DELTA	LENGTH	TANGENT
C1	1450.00'	10°28'31"	265.10'	132.92'
C2	1550.00'	10°31'13"	284.60'	142.70'
C3	320.00'	10°40'45"	59.64'	29.91'
C4	380.00'	02°50'54"	18.89'	9.45'
C5	1450.00'	10°28'31"	265.10'	132.92'
C6	1550.00'	10°26'49"	282.62'	141.70'
C7	1550.00'	05°56'25"	160.70'	80.42'
C8	1216.00'	05°15'07"	118.54'	59.32'
C9	1304.00'	05°35'37"	127.31'	63.70'
C10	1550.00'	04°34'48"	123.90'	61.98'

LEGEND

- C-P-S SCENIC HIGHWAY COMMERCIAL
- R-4 PLANNED RESIDENTIAL
- R-5 OPEN AREA COMBINING ZONE-RESIDENTIAL DEVELOPMENTS

MAP NO. 40.035
**CHANGE OF OFFICIAL ZONING PLAN
 THOUSAND PALMS
 DISTRICT**

CHANGE OF ZONE CASE NO. 6479
 AMENDING ORDINANCE NO. 348
 ADOPTED BY ORDINANCE NO. 348.4273
 DATE: 03/08/05

