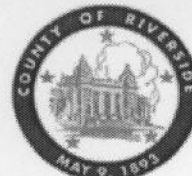


SUBMITTAL TO THE BOARD OF SUPERVISORS
COUNTY OF RIVERSIDE, STATE OF CALIFORNIA



FROM: TLMA – Transportation Dept.

SUBMITTAL DATE:
415B May 9, 2005

SUBJECT: Tract 29386-1 (and MS 3813) in the La Sierra Area
ONE YEAR GUARANTEE AND MAINTENANCE AGREEMENTS

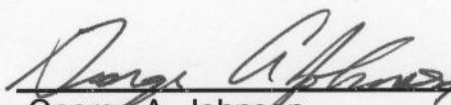
RECOMMENDED MOTION: That the Board approve the attached One Year Guarantee and Maintenance Agreements as approved by County Counsel and authorize the Chairman to sign these agreements for Tract 29386-1 (and MS 3813).

BACKGROUND: Improvements have been completed on this project. The developer desires to enter into Maintenance Agreements to guarantee a one year maintenance of the improvements and has submitted agreements and securities which have been approved by County Counsel.

HS:lf

Submittals: Vicinity Map

- Road/Drainage Maint Agrmts (for 29386-1)
- Water System Maint Agrmts (for 29386-1)
- Sewer System Maint Agrmts (for 29386-1)
- Road/Drainage Maint Agrmts (from Brehm, Centex, Standard Pacific for MS 3813)
- Water System Maint Agrmts (from Brehm, Centex, Standard Pacific for MS 3813)
- Sewer System Maint Agrmts (from Brehm, Centex, Standard Pacific for MS 3813)


George A. Johnson
Director of Transportation

REVIEWED BY EXECUTIVE OFFICE

DATE 5/10/05

Departmental Concurrence

- Consent
- Policy
- Consent
- Policy

Dep't Recomm.:
Per Exec. Ofc.:

Prev. Agn. Ref.: 02/26/02 – 2.27

District: 1

Agenda Number:

ATTACHMENTS FILED
WITH THE CLERK OF THE BOARD

2.10

Permanent Easement to
County of Riverside Rec. 7/15
307384 O.R. Riv. Co., CA.

Fd. 3/4" I.P. Tagged R.C.E. 9876,
Dn. 0.6 per R.S. 29/5 & R.S.
63/91-95.

T35 P
C
S31
LS 4218

N02°36'29"E

N88°52'16"W
36.93' {37.20'}
0.38'

N33°39'12"E
[[36.51']]
{36.17'}

Fd. 2" I.P.
stamped M.W.D.
Dn. 0.5' (Be
0.13' E'y p
63/91-95.

Fd. 4"x4" Conc. Post with
Disc stamped M.W.D. L.S. 4
Dn. 0.4' per R.S. 63/91-95.

{1426.20'}
{.47'}

ed M.W.D. L.S.
R.S. 63/91-95.

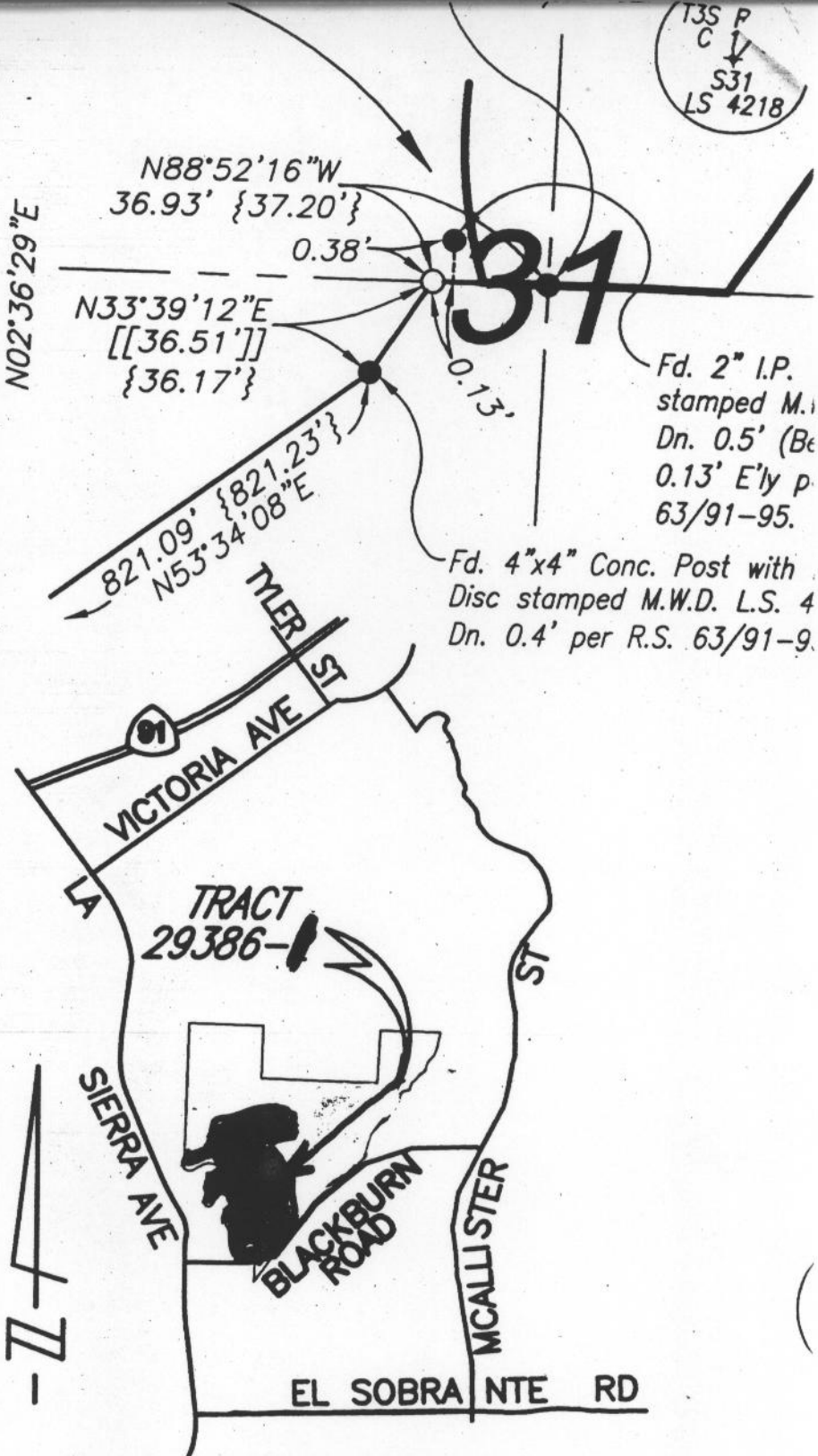
1293.97' {1293.93'}

2587.95' [2587.94'] (2587.96')

1293.98' {1293.92'}

with Brass Disc stamped 1/4
5W, Flush per R.S. 63/91-95,
1-15 & M.B. 290/73-82.

{34.70'}
{.60' [5552.60'] (5552.79')} 1 6



VICINITY MAP

N.T.S.

2776.37' [2776.38'] (2776.49')