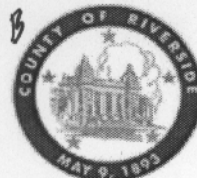


SUBMITTAL TO THE BOARD OF SUPERVISORS  
COUNTY OF RIVERSIDE, STATE OF CALIFORNIA

513 B



FROM: TLMA – Transportation Dept.

SUBMITTAL DATE:  
May 16, 2005

SUBJECT: Tract 25259-2 (Onsite and Offsite Improvements) in the Menifee Area  
**ONE YEAR GUARANTEE AND MAINTENANCE AGREEMENTS**

RECOMMENDED MOTION: That the Board approve the attached One Year Guarantee and Maintenance Agreements as approved by County Counsel and authorize the Chairman to sign these agreements for Tract 25259-2.

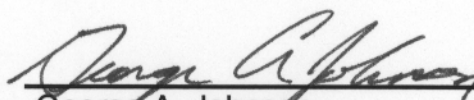
BACKGROUND: Improvements have been completed on this project. The developer desires to enter into Maintenance Agreements to guarantee a one year maintenance of the improvements and has submitted agreements and securities which have been approved by County Counsel.

Departmental Concurrence

HS:lf

Submittals: Vicinity Map

- Road/Drainage Maint Agrmts (onsite)
- Water System Maint Agrmts (onsite)
- Sewer System Maint Agrmts (onsite)
- Road/Drainage Maint Agrmts (offsite)
- Water System Maint Agrmts(offsite)
- Sewer System Maint Agrmts(offsite)

  
George A. Johnson  
Director of Transportation

REVIEWED BY EXECUTIVE OFFICE  
*[Signature]*  
DATE: 5/16/05

- Consent
- Policy
- Consent
- Policy

COUNTY OF RIVERSIDE  
02 MAY 16 AM 10:23  
OFFICE EXECUTIVE

Dep't Recomm.:  
Per Exec. Ofc.:

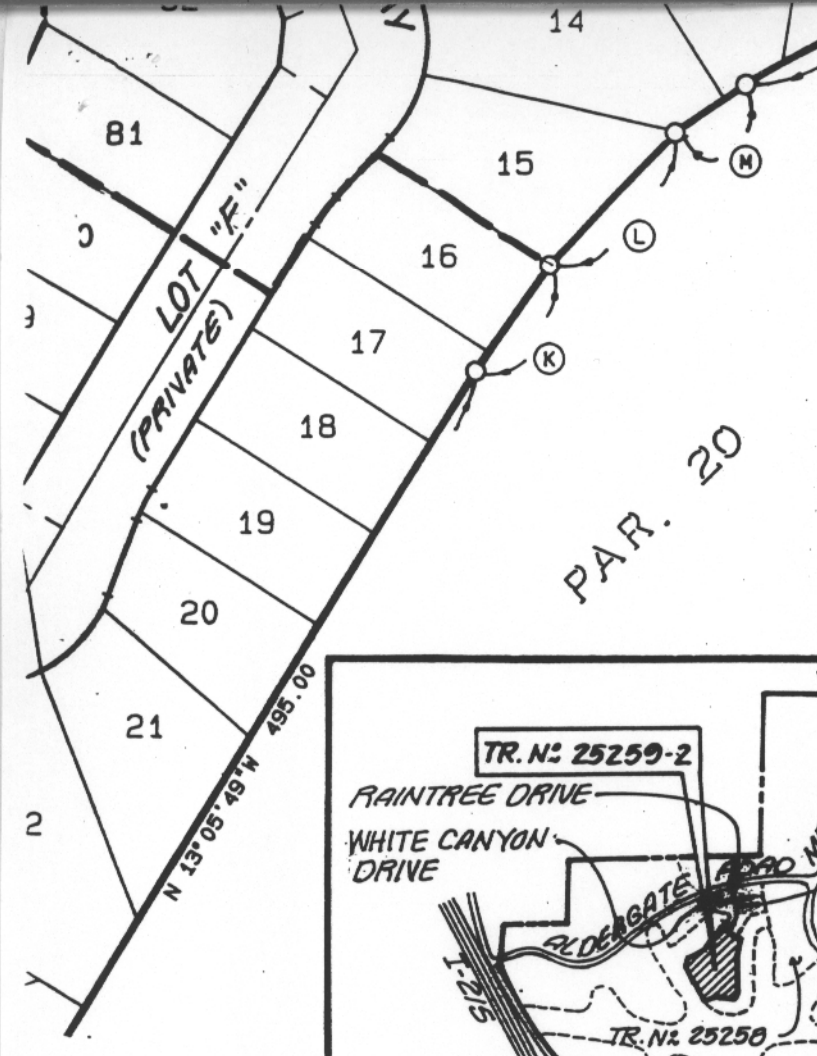
Prev. Agn. Ref.: 08/24/99 – 2.30

District: 3

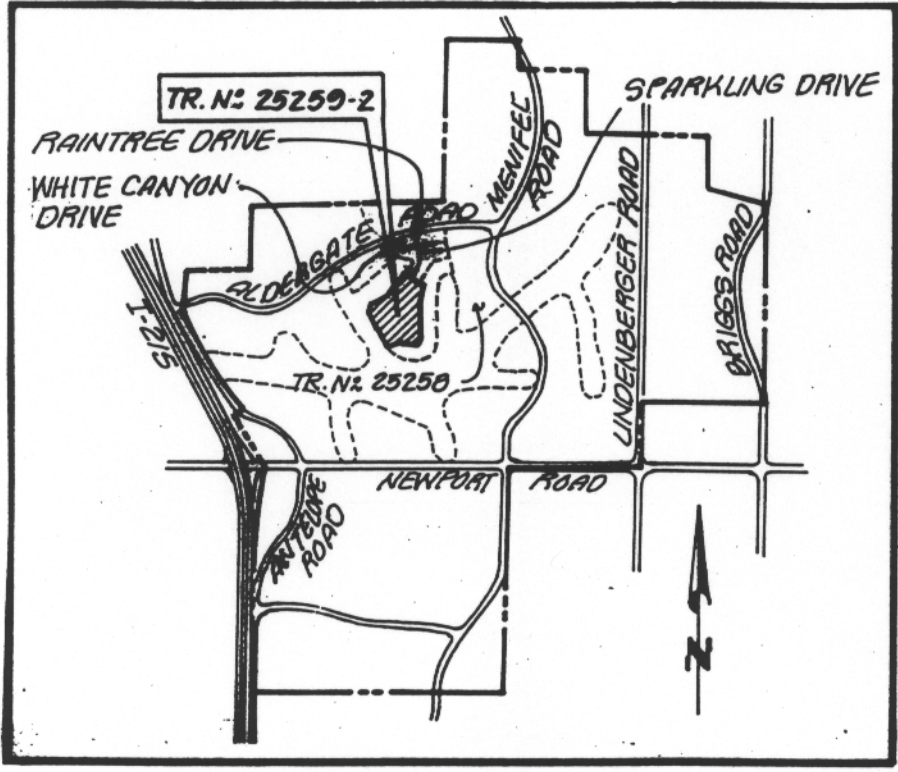
Agenda Number:

ATTACHMENTS FILED  
WITH THE CLERK OF THE BOARD

2.12



PAR. 20



○	DELTA/BEARING	R
(A)	N 35° 48' 34" W	
(B)	N 62° 15' 49" E	
(C)	8° 04' 23"	27
(D)	N 75° 18' 27" E	
(E)	N 80° 24' 53" E	
(F)		
(G)	N 21° 39' 04" E	
(H)	N 14° 23' 54" E	
(I)	N 01° 21' 00" W	
(J)	N 13° 14' 03" W	
(K)	N 09° 45' 08" W	
(L)	N 00° 43' 14" W	
(M)	N 11° 44' 05" E	

**VICINITY MAP**  
NOT TO SCALE