

SUBMITTAL TO THE BOARD OF SUPERVISORS  
COUNTY OF RIVERSIDE, STATE OF CALIFORNIA

133A



FROM: County Counsel

SUBMITTAL DATE: June 21, 2005

SUBJECT: Ordinance No. 348.4308

**RECOMMENDED MOTION:** That the Board of Supervisors adopt Ordinance No. 348.4308 amending the zoning in the Prado/Mira Loma District shown on Map No. 38.110 Change of Zone Case No. 6851.

**BACKGROUND:** Change of Zone Case No. 6851 was approved by the Board of Supervisors on May 17, 2005.

*Katherine A. Lind*  
KATHERINE A. LIND  
Deputy County Counsel

C.E.O. RECOMMENDATION:

**APPROVE**

*Lisa Brandl*

County Executive Office Signature

Policy  
 Policy

Consent  
 Consent

Department Recommendation:  
Per Executive Office:

Prev. Agn. ref.

Dist. 2

AGENDA NO.

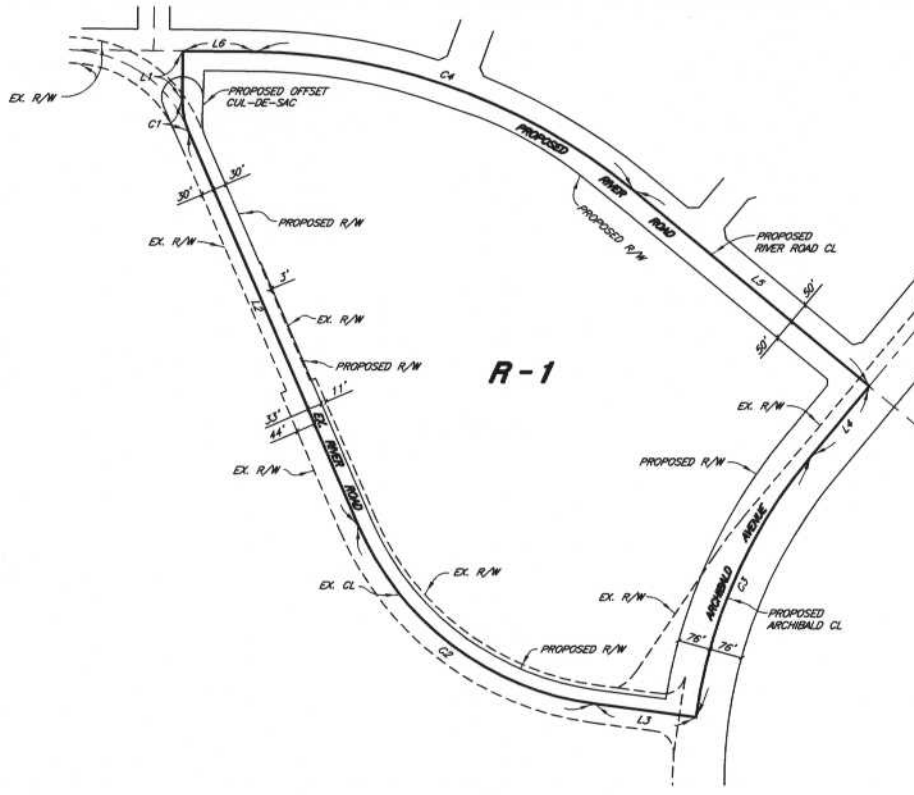
2.12



LINE DATA TABLE		
NO.	BEARING	LENGTH
L1	N00°35'46"E	113.96'
L2	N23°17'48"W	1000.64'
L3	N82°25'48"W	237.81'
L4	N39°44'09"E	210.38'
L5	N50°13'39"W	713.11'
L6	N89°23'17"W	168.00'

CURVE DATA TABLE				
NO.	DELTA	RADIUS	LENGTH	TANGENT
C1	23°53'34"	177.27'	73.92'	37.51'
C2	59°08'00"	700.00'	722.45'	397.12'
C3	32°11'51"	1200.00'	674.34'	346.33'
C4	39°09'38"	1400.00'	956.87'	497.97'

SEC. 10 T3S R7W S.B.B. & M



LEGEND

**R-1** ONE-FAMILY DWELLINGS



A.P.N.  
130-080-017  
130-080-018

MAP NO. 38.110  
**CHANGE OF OFFICIAL ZONING PLAN  
PRADO-MIRA LOMA  
DISTRICT**

CHANGE OF ZONE CASE NO. 06851  
AMENDING ORDINANCE NO. 348  
ADOPTED BY ORDINANCE NO. 348.4308  
JULY 12, 2005  
RIVERSIDE COUNTY BOARD OF SUPERVISORS