

**SUBMITTAL TO THE BOARD OF SUPERVISORS
COUNTY OF RIVERSIDE, STATE OF CALIFORNIA**

232



FROM: TLMA - Transportation Dept.

SUBMITTAL DATE:

July 1, 2005

SUBJECT: Reconstruction of Ramon Road with Portland Cement Concrete paving, Varner Road to Interstate 10 East-Bound Ramp Terminal, Thousand Palms area

RECOMMENDED MOTION: That the Board of Supervisors approve the plans and specifications for the reconstruction of Ramon Road with Portland Cement Concrete paving, from Varner Road to the Interstate 10 East-bound ramp terminal, in the Thousand Palms area of Riverside County. Authorize the Clerk to advertise for bids to be received in the office of the Director of Transportation up to the hour of 2:00 pm, Wednesday, July 20, 2005, at which time bids will be opened.

BACKGROUND: The 2004-2005 Transportation Improvement Program provides for the reconstruction of the subject portion of Ramon Road with Portland Cement Concrete paving, and associated improvements. The project will remedy the pavement deterioration and rutting that has resulted from the high volume of heavy truck traffic which utilize Ramon Road within the project limits. Because of the high volume of traffic at this project location, every effort is being made to minimize inconvenience to the

*Juan C. Perez
DEPUTY DIRECTOR
FOR*

George A. Johnson
Director of Transportation

GAJ:sd

(Continued On Attached Page)

| | | | | |
|-----------------------|-------------------------------|--------------|-------------------------|-----------|
| FINANCIAL DATA | Current F.Y. Total Cost: | \$ 1,000,000 | In Current Year Budget: | Yes |
| | Current F.Y. Net County Cost: | \$ 0 | Budget Adjustment: | No |
| | Annual Net County Cost: | \$ 0 | For Fiscal Year: | 2004/2005 |

| | | |
|--|---|--------------------------|
| SOURCE OF FUNDS: Measure A/Coachella Valley, STP-Formula, Gas Tax | Positions To Be Deleted Per A-30 | <input type="checkbox"/> |
| | Requires 4/5 Vote | <input type="checkbox"/> |

C.E.O. RECOMMENDATION: **APPROVE**

County Executive Office Signature *Bronda King*

- Dep't Recomm.: Policy
- Per Exec. Ofc.: Policy
- Consent
- Consent

Prev. Agn. Ref. | District: 4 | Agenda Number:

ATTACHMENTS FILED WITH THE CLERK OF THE BOARD

3.66

The Honorable Board of Supervisors

RE: Reconstruction of Ramon Road with Portland Cement Concrete paving, Varner Road to Interstate 10 East-Bound Ramp Terminal, Thousand Palms area

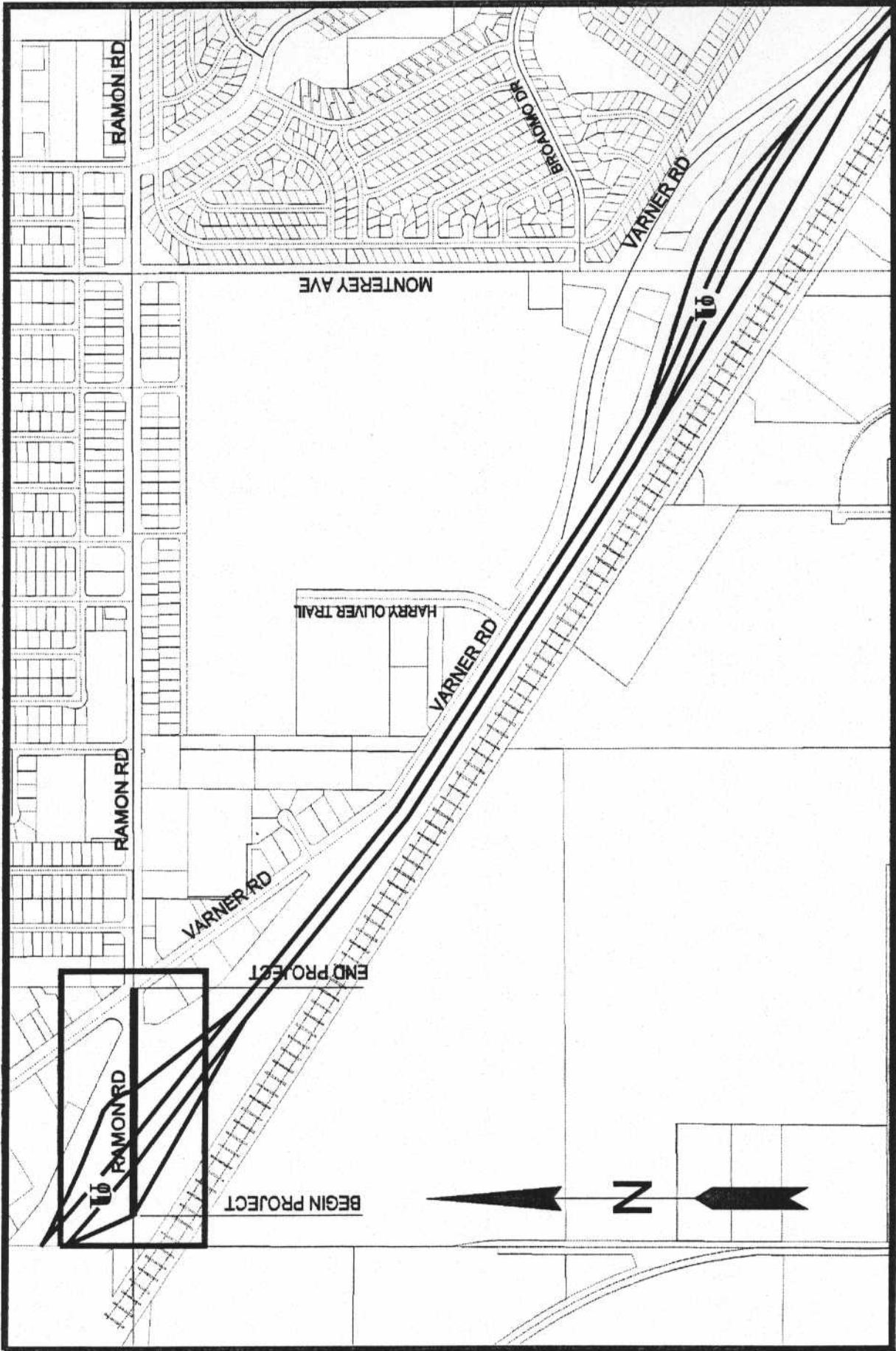
July 1, 2005

Page 2 of 2

public. The Ramon Road / Interstate 10 project interchange will be closed to traffic for five calendar days and the work at the Ramon Road and Varner Road intersection will be performed over an additional 3 day period. Traffic will be re-directed to the Date Palm Drive and Monterey Avenue interchanges. The reconstruction of Ramon Road will be performed using rapid setting concrete that will provide both high strength and ability to open the road to traffic much more quickly than conventional concrete. The intent is for the work to be performed on a 24 hour per day basis in order to minimize the closure period. During construction, traffic movements that will not conflict with the construction operation will be permitted.

The submitted plans and specifications have been approved as to form by County Counsel. Environmental clearance is complete. Project No. B1-0671.

**RAMON RD I-10 TO EB RAMPS
STPL 5956 (143)**



VICINITY MAP

T4S, R6E SECTIONS 19, 20
LENGTH = 0.28 MI
N.T.S.