

SUBMITTAL TO THE BOARD OF SUPERVISORS
COUNTY OF RIVERSIDE, STATE OF CALIFORNIA

809A



FROM: County Counsel
SUBJECT: Ordinance No. 348.4316

SUBMITTAL DATE: August 10, 2005

RECOMMENDED MOTION: That the Board of Supervisors adopt Ordinance No. 348.4316 amending the zoning in the Bermuda Dunes District shown on Map No. 30.083 Change of Zone Case No. 7007.

BACKGROUND: Change of Zone Case No. 7007 was approved by the Board of Supervisors on August 9, 2005.

Katherine A. Lind
KATHERINE A. LIND
Deputy County Counsel

C.E.O. RECOMMENDATION:

APPROVE

Ava Brandl

County Executive Office Signature

Policy
 Policy

Consent
 Consent

Department Recommendation:
Per Executive Office:

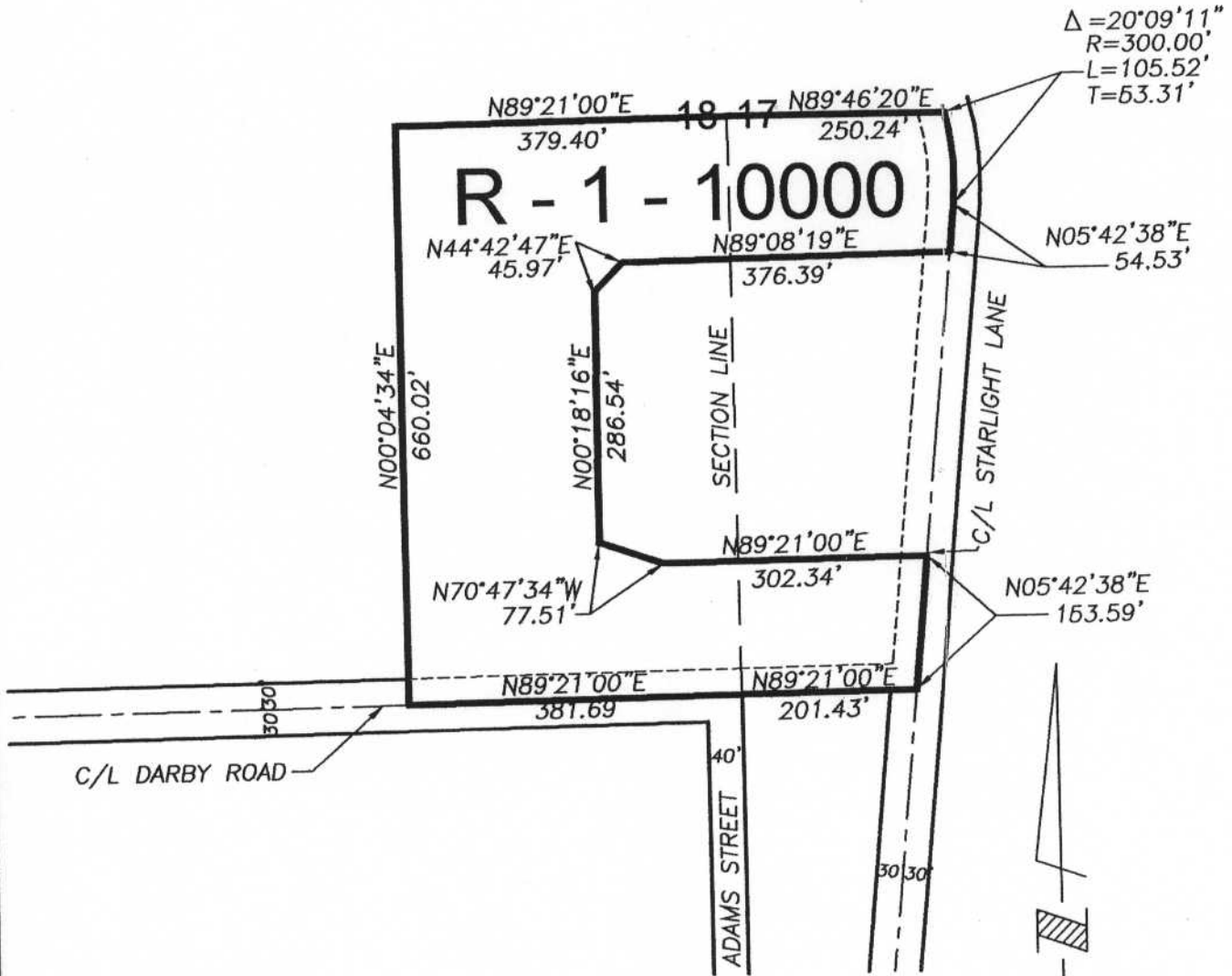
Prev. Agn. ref.

Dist. 4

AGENDA NO.

2.9

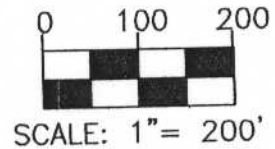
SECTIONS 17 & 18, T. 5 S., R. 7 E., S.B.B. & M.



LEGEND

R - 1 - 10000

ONE FAMILY DWELLINGS
PER 10,000 SQUARE FEET



MAP NO. 30.083
CHANGE OF OFFICIAL ZONING PLAN
**BERMUDA DUNES
DISTRICT**

CHANGE OF ZONE CASE NO. 7007
AMENDING ORDINANCE NO. 348
ADOPTED BY ORDINANCE NO. 348.4316
SEPTEMBER 13, 2005
RIVERSIDE COUNTY BOARD OF SUPERVISORS