

SUBMITTAL TO THE BOARD OF SUPERVISORS
COUNTY OF RIVERSIDE, STATE OF CALIFORNIA

239



FROM: County Counsel

SUBMITTAL DATE: September 13, 2005

SUBJECT: Ordinance No. 348.4325

RECOMMENDED MOTION: That the Board of Supervisors adopt Ordinance No. 348.4325 amending the zoning in the Woodcrest District shown on Map No. 59.054 Change of Zone Case No. 6996.

BACKGROUND: Change of Zone Case No. 6996 was approved by the Board of Supervisors on June 28, 2005.

KATHERINE A. LIND
Deputy County Counsel

C.E.O. RECOMMENDATION:

APPROVE

County Executive Office Signature

Policy
 Policy

Consent
 Consent

Department Recommendation:
Per Executive Office:

Prev. Agn. ref.

Dist. 1

AGENDA NO.

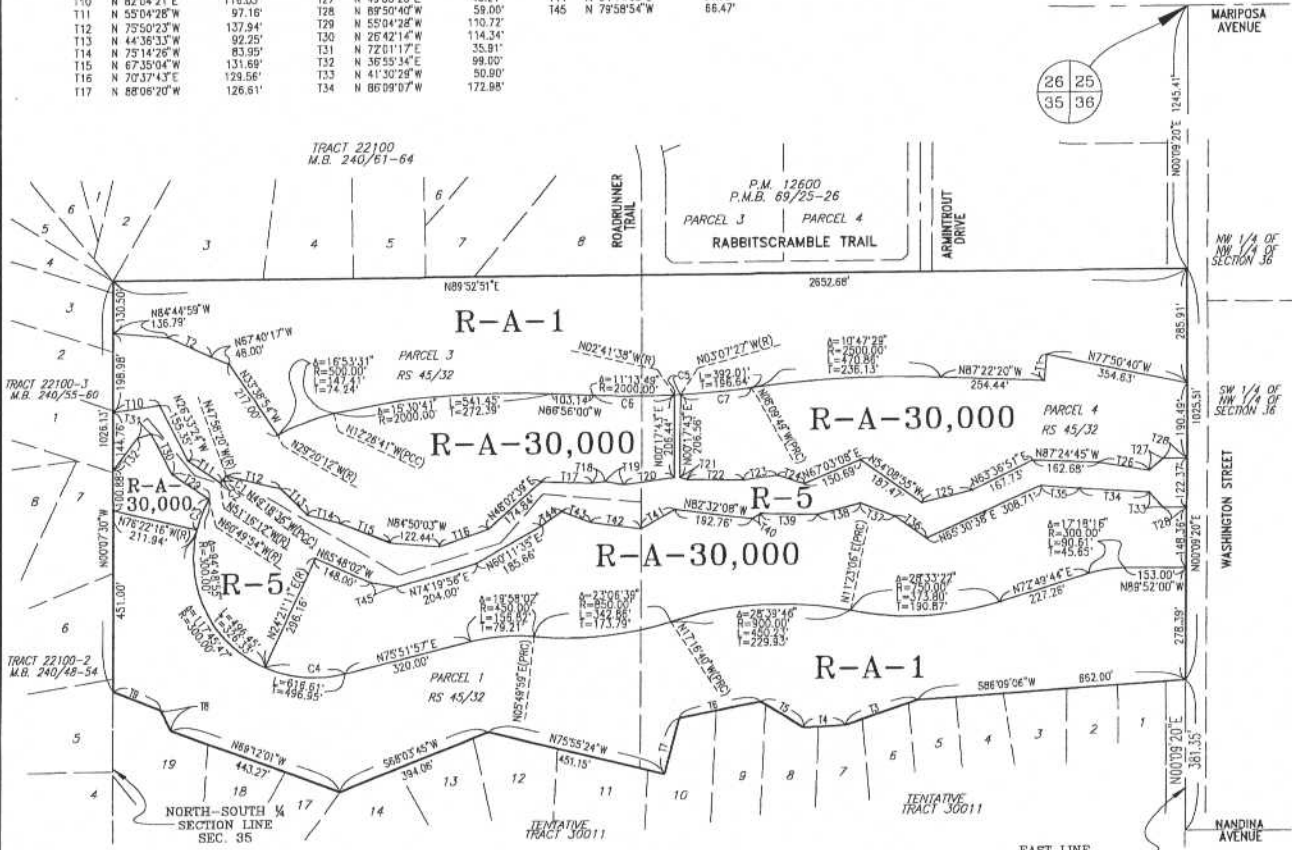
SECTION 35, TOWNSHIP 3 SOUTH, RANGE 5 WEST, S.B.B.&M.

TANGENT DATA

NO.	BEARING	DISTANCE	NO.	BEARING	DISTANCE	NO.	BEARING	DISTANCE
T1	N 09°54'40"E	65.46'	T18	N 83°46'46"E	31.40'	T35	N 85°10'59"W	96.02'
T2	N 65°07'17"W	115.00'	T19	N 80°17'50"W	48.98'	T36	N 55°01'12"W	98.88'
T3	N 70°41'06"E	190.97'	T20	N 82°28'18"E	123.97'	T37	N 69°41'55"W	80.80'
T4	N 87°16'43"E	102.70'	T21	N 89°56'37"W	18.40'	T38	N 75°51'35"E	108.82'
T5	N 58°10'33"W	125.66'	T22	N 80°18'36"W	139.37'	T39	N 88°36'14"W	140.61'
T6	N 78°35'55"E	205.61'	T23	N 82°47'15"E	85.46'	T40	N 58°44'04"E	25.17'
T7	N 14°18'44"E	144.46'	T24	N 71°53'18"W	69.59'	T41	N 60°39'35"E	98.82'
T8	N 26°19'57"W	57.51'	T25	N 76°19'14"E	126.99'	T42	N 82°13'36"W	126.99'
T9	N 67°14'21"W	127.18'	T26	N 80°18'35"W	126.53'	T43	N 68°36'17"W	75.84'
T10	N 82°04'21"E	116.03'	T27	N 49°55'23"E	45.21'	T44	N 54°44'05"E	61.73'
T11	N 55°04'28"W	97.16'	T28	N 69°50'40"W	59.00'	T45	N 79°58'54"W	66.47'
T12	N 75°50'23"W	137.94'	T29	N 55°04'28"W	110.72'			
T13	N 44°36'33"W	92.25'	T30	N 26°42'14"W	114.34'			
T14	N 75°14'26"W	83.95'	T31	N 72°01'17"E	35.81'			
T15	N 67°35'04"W	131.68'	T32	N 38°53'14"E	98.80'			
T16	N 70°37'43"E	139.56'	T33	N 41°30'28"W	50.90'			
T17	N 88°08'20"W	126.61'	T34	N 86°09'07"W	172.98'			

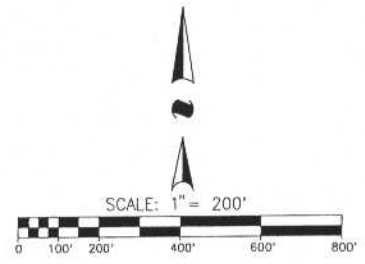
CURVE DATA

NO.	ANGLE	RADIUS	LENGTH	TANGENT
C1	1°57'36"	300.00'	10.26'	5.13'
C2	1°20'16"	500.00'	11.67'	5.84'
C3	1°32'22"	300.00'	81.36'	40.93'
C4	38°29'14"	300.00'	201.52'	104.73'
C5	0°25'49"	2000.00'	15.02'	7.51'
C6	5°45'38"	2000.00'	201.98'	100.63'
C7	9°02'22"	2000.00'	175.91'	88.01'



LEGEND

- R-A-1** RESIDENTIAL AGRICULTURE ONE ACRE MINIMUM
- R-A-30,000** RESIDENTIAL AGRICULTURE 30,000 SQUARE FEET MINIMUM
- R-5** OPEN AREA COMBINING ZONE-RESIDENTIAL DEVELOPMENTS



MAP NO. 59.054
CHANGE OF OFFICIAL ZONING PLAN
WOODCREST DISTRICT

CHANGE OF ZONE CASE NO. 06996
AMENDING ORDINANCE NO. 348
 ADOPTED BY ORDINANCE NO. 348.4325



ASSESSOR PARCEL NUMBERS:
 273-290-007, 008, & 017

OCTOBER 25, 2005

RIVERSIDE COUNTY BOARD OF SUPERVISORS