

SUBMITTAL TO THE BOARD OF SUPERVISORS  
COUNTY OF RIVERSIDE, STATE OF CALIFORNIA

2393



**FROM:** County Counsel  
**SUBJECT:** Ordinance No. 348.4329

**SUBMITTAL DATE:** October 11, 2005

**RECOMMENDED MOTION:** That the Board of Supervisors adopt Ordinance No. 348.4329 amending the zoning in the Prado/Mira Loma District shown on Map No. 38.115 Change of Zone Case No. 6947.

**BACKGROUND:** Change of Zone Case No. 6947 was approved by the Board of Supervisors on September 27, 2005.

*Katherine A. Lind*  
KATHERINE A. LIND  
Deputy County Counsel

**C.E.O. RECOMMENDATION:**

**APPROVE**

County Executive Office Signature *[Signature]*

Policy  
 Policy

Consent  
 Consent

Department Recommendation:  
Per Executive Office:

Prev. Agn. ref.

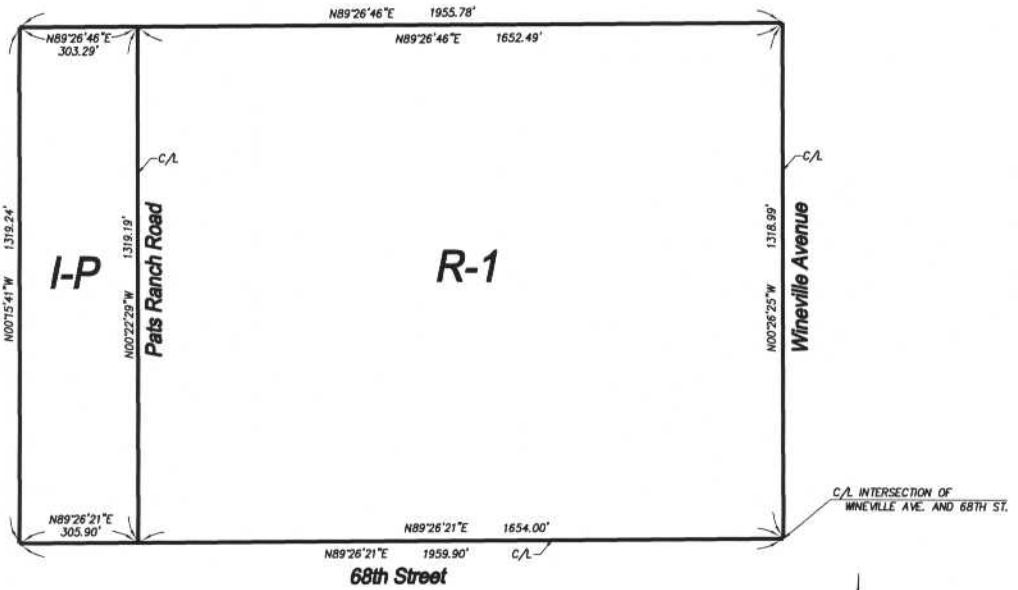
Dist. 2

AGENDA NO.

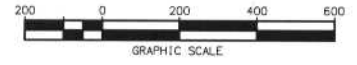
2.5



SEC. 30 T. 2S., R. 6W S.B.B. & M.



C/L INTERSECTION OF WINEVILLE AVE. AND 68TH ST.



**LEGEND**

R-1
I-P

ONE-FAMILY DWELLINGS

INDUSTRIAL PARK

MAP NO. 38.115

CHANGE OF OFFICIAL ZONING PLAN  
 PRADO-MIRA LOMA DISTRICT  
 CHANGE OF ZONE CASE NO. 6947  
 AMENDING ORDINANCE NO. 348  
 ADOPTED BY ORDINANCE NO. 348.4329  
 OCT 25, 2005  
 RIVERSIDE COUNTY BOARD OF SUPERVISORS

APN: 152-020-002  
 APN: 152-020-004  
 APN: 152-020-006