

**SUBMITTAL TO THE BOARD OF SUPERVISORS  
COUNTY OF RIVERSIDE, STATE OF CALIFORNIA**

425A



**FROM:** County Counsel

**SUBMITTAL DATE:** October 18, 2005

**SUBJECT:** Ordinance No. 348.4331

**RECOMMENDED MOTION:** That the Board of Supervisors adopt Ordinance No. 348.4331 amending the zoning in the Prado/Mira Loma District shown on Map No. 38.117 Change of Zone Case No. 6748.

**BACKGROUND:** Change of Zone Case No. 6748 was approved by the Board of Supervisors on January 27, 2004.

*Minh Tran*  
\_\_\_\_\_  
MINH TRAN  
Deputy County Counsel

**C.E.O. RECOMMENDATION:**

**APPROVE**

County Executive Office Signature

*[Signature]*

Policy  
 Policy

Consent  
 Consent

Department Recommendation:  
Per Executive Office:

Prev. Agn. ref.

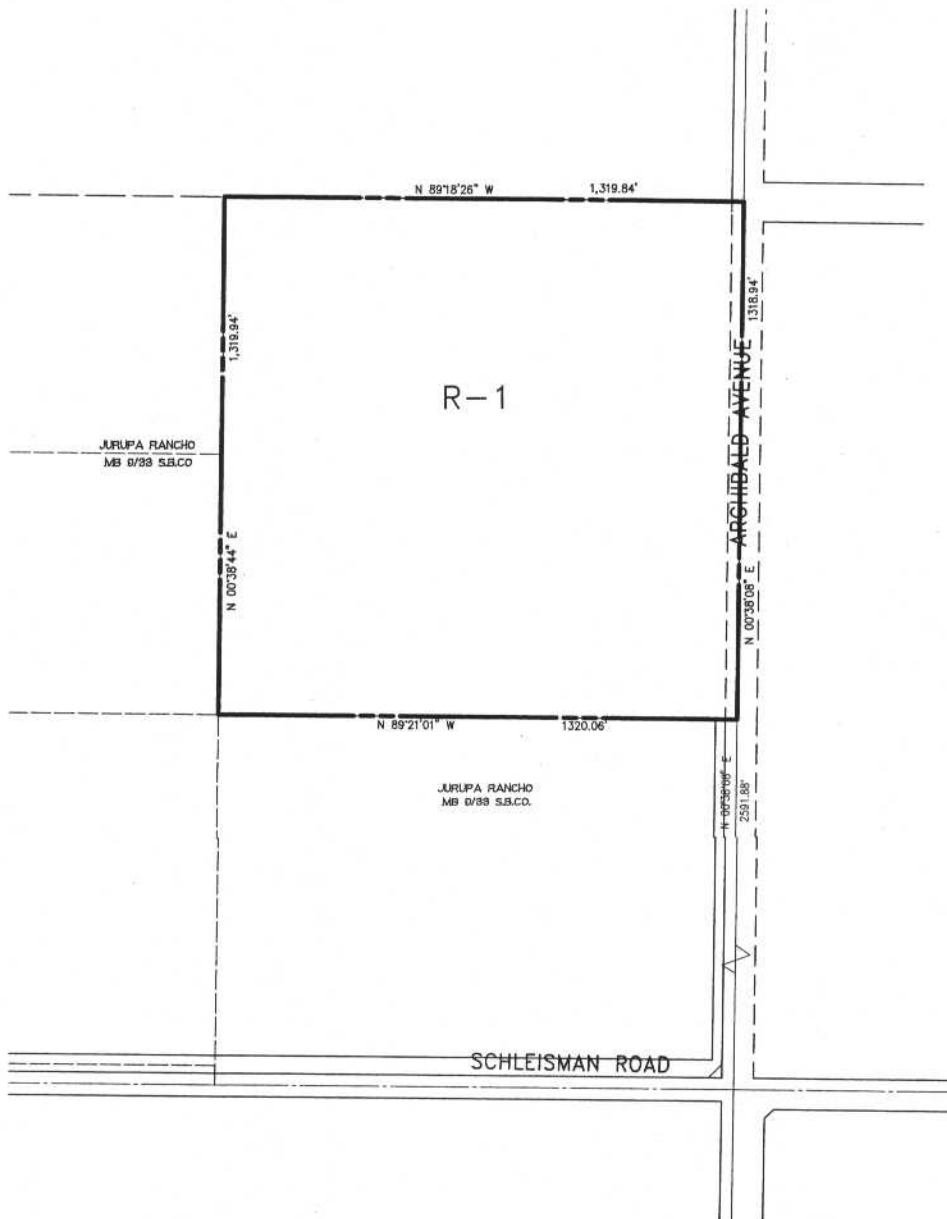
Dist. 2

AGENDA NO.

2.4



SEC. 27 T.2S., R.7W. S.B.B.&M.



LEGEND

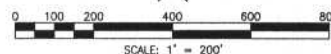
**R-1** ONE-FAMILY DWELLINGS

MAP NO. 38.117

**CHANGE OF OFFICIAL ZONING PLAN**

**PRADO-MIRA LOMA DISTRICT**

CHANGE OF ZONE CASE No. 06748  
AMENDING ORDINANCE NO. 348  
ADOPTED BY ORDINANCE No. 348.4331  
NOVEMBER 8, 2005



FILE: \\NFDS\1\00000\Projects\Zone-Change\C\000008.dwg PLOTTED: Oct 24, 2005 1:29pm BY: sba PLOT SCALE: 1"=1'

DOCUMENT NO. RW NO. ENL. NO.