

8521  
SUBMITTAL TO THE BOARD OF SUPERVISORS  
COUNTY OF RIVERSIDE, STATE OF CALIFORNIA



FROM: County Counsel

SUBMITTAL DATE: March 28, 2005

SUBJECT: Ordinance No. 348.4281

**RECOMMENDED MOTION:** That the Board of Supervisors adopt Ordinance No. 348.4281 amending the zoning in the Lake Mathews District shown on Map No. 36.052 Change of Zone Case No. 6478.

**BACKGROUND:** Change of Zone Case No. 6478 was approved by the Board of Supervisors on August 19, 2003.

*Katherine A. Lind*  
KATHERINE A. LIND  
Deputy County Counsel

C.E.O. RECOMMENDATION: **APPROVE**

*Lisa Brandt*

County Executive Office Signature

Policy  
 Policy

Consent  
 Consent

Department Recommendation:  
Per Executive Office:

Prev. Agn. ref.

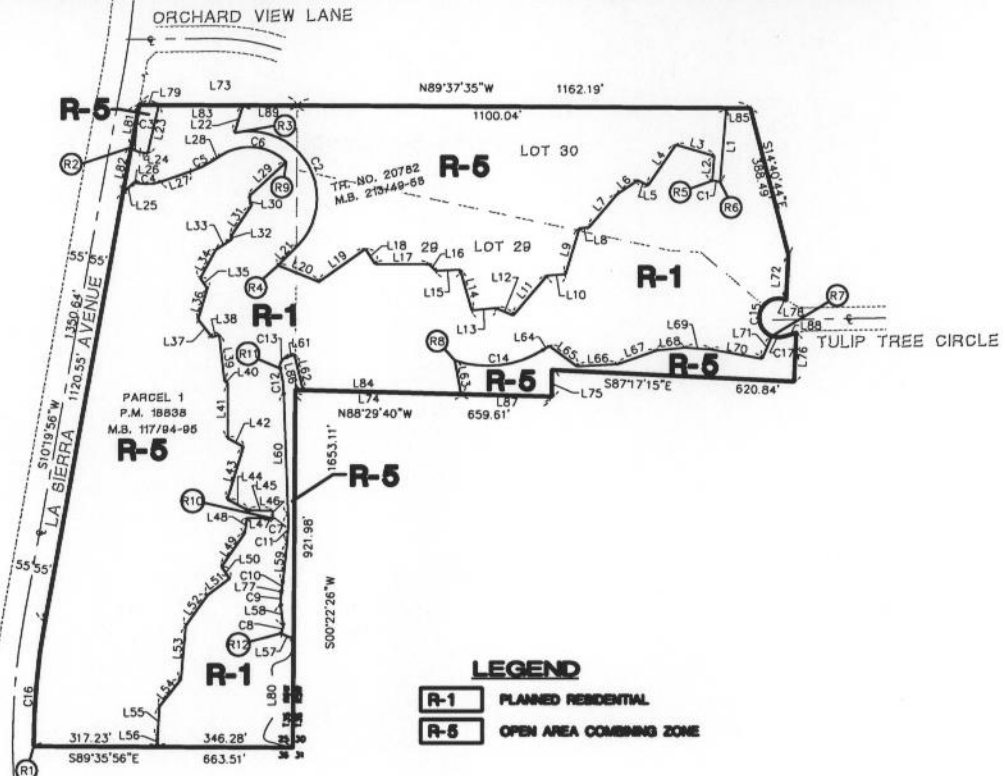
Dist. 1

AGENDA NO.

2.5



S.W. 1/4 SEC. 30, T. 3S., R. 5W. AND S.E. 1/4 SEC. 25, T. 3S., R. 6W., S.B.M.



**LEGEND**  
**R-1** PLANNED RESIDENTIAL  
**R-5** OPEN AREA COMBINING ZONE

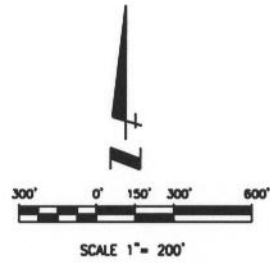
LAKE KNOLL PARKWAY

LINE	BEARING	LENGTH
L1	N04°34'17"E	191.34
L2	S04°34'17"W	63.98
L3	S73°47'51"E	102.11
L4	N34°42'40"E	126.96
L5	S63°51'19"E	29.33
L6	N55°04'51"E	62.90
L7	N40°38'20"E	111.18
L8	N83°17'55"E	24.61
L9	N16°48'28"E	122.75
L10	N85°33'02"E	47.03
L11	N40°22'37"E	134.22
L12	S66°32'27"E	48.12
L13	N84°21'17"E	62.87
L14	S15°39'11"E	108.17
L15	N87°49'47"E	64.03
L16	S44°40'52"E	23.05
L17	S89°37'09"E	139.93
L18	S32°28'34"E	46.00
L19	N54°49'26"E	146.33
L20	S67°55'30"E	112.70
L21	S44°50'13"W	70.02
L22	S16°36'47"W	74.26
L23	N12°49'50"E	127.85
L24	S79°40'04"E	20.65
L25	S46°54'19"W	38.60
L26	N79°40'04"W	8.21
L27	S71°51'18"W	77.12
L28	S56°36'42"W	22.08
L29	N47°03'19"E	129.98
L30	N11°20'42"W	26.38
L31	N33°52'28"E	92.41
L32	N12°05'37"W	8.61
L33	N57°02'13"E	48.44
L34	N28°24'15"E	82.11
L35	N34°28'37"W	31.75
L36	N16°40'31"E	82.79
L37	N37°30'22"W	57.72
L38	S72°29'57"W	20.07
L39	N06°15'53"W	118.80
L40	N44°20'14"W	13.30
L41	N00°20'16"E	139.04
L42	N60°51'55"W	46.62
L43	N17°05'31"E	141.50
L44	N62°30'37"W	59.91
L45	N88°36'23"W	61.56

LINE	BEARING	LENGTH
L46	N01°56'42"W	10.28
L47	S88°36'23"E	65.09
L48	N08°38'34"E	39.24
L49	N34°36'59"E	104.94
L50	N33°30'49"W	36.61
L51	N52°59'33"E	71.54
L52	N35°19'17"E	95.45
L53	N04°57'21"E	139.67
L54	N37°59'35"E	88.68
L55	N03°35'36"E	77.65
L56	N00°24'43"E	26.53
L57	S65°23'50"E	36.75
L58	S06°06'42"E	50.00
L59	S08°02'31"W	101.73
L60	S01°56'42"E	310.53
L61	S72°29'57"W	20.15
L62	N13°35'22"W	94.17
L63	S11°11'54"E	88.65
L64	S58°08'46"W	19.82
L65	N53°32'03"W	88.26
L66	S87°00'52"W	103.62
L67	S70°19'08"W	105.94
L68	S83°59'59"W	72.15
L69	N85°51'18"W	66.97
L70	N79°49'05"W	134.18
L71	S23°19'42"W	63.30
L72	S02°44'08"W	115.98
L73	N89°37'32"W	403.76
L74	N88°29'40"W	427.39
L75	N00°21'17"E	68.06
L76	N02°44'08"E	125.82
L77	S10°12'00"W	5.32
L78	N74°42'23"W	6.28
L79	S89°37'22"E	49.97
L80	S00°22'26"W	279.31
L81	N1019'56"E	110.47
L82	N1019'56"E	119.62
L83	S89°37'32"E	214.72
L84	N88°29'40"W	407.61
L85	S83°37'35"E	62.15
L86	N88°29'40"W	19.78
L87	S88°29'40"E	232.22
L88	S72°46'23"W	31.97
L89	S89°37'32"E	139.07

CURVE	LENGTH	RADIUS	DELTA
C1	20.41	38.00	30°46'23"
C2	445.37	173.00	147°30'05"
C3	25.10	35.00	41°04'56"
C4	62.58	123.31	29°04'38"
C5	66.96	262.00	14°38'36"
C6	181.84	133.00	78°20'06"
C7	9.75	488.00	01°08'41"
C8	24.92	38.00	37°34'37"
C9	31.32	110.00	16°18'41"
C10	23.08	318.00	04°09'29"
C11	73.60	528.00	07°59'12"
C12	65.37	318.00	11°46'43"
C13	37.62	25.00	86°13'21"
C14	235.48	268.00	50°20'33"
C15	152.63	50.00	174°54'20"
C16	324.04	1745.00	10°38'22"
C17	32.83	50.00	88°25'10"

LINE	BEARING
R1	S89°41'34"W
R2	S51°24'53"W
R3	N12°39'52"W
R4	S23°07'36"E
R5	N03°28'17"W
R6	N27°18'09"E
R7	S20°23'17"W
R8	S18°29'19"W
R9	N44°56'48"E
R10	N89°11'59"E
R11	N76°16'36"E
R12	S58°32'05"E



MAP NO. 36.052  
**CHANGE OF OFFICIAL ZONING PLAN  
 LAKE MATHEWS  
 DISTRICT**  
 CHANGE OF ZONE CASE NO. 06478  
 AMENDING ORDINANCE NO. 348  
 ADOPTED BY ORDINANCE NO. 348.4281  
 APRIL 12, 2005  
 RIVERSIDE COUNTY BOARD OF SUPERVISORS